

# YVB75KDMN

## Unloader Valve w/Plastic Knob

A direct-mount, adjustable, trapped pressure type unloader with built-in bypass.



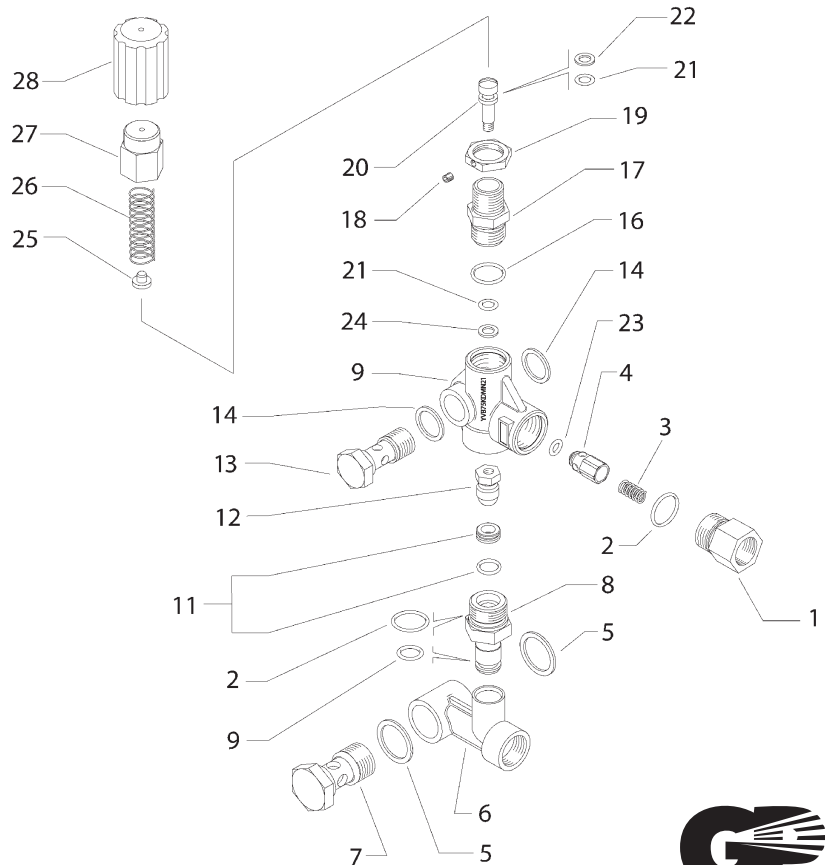
### SPECIFICATIONS

Part Number	YVB75KDMN	
Maximum Volume	8.0 GPM	
Rated Discharge Pressure	3200 PSI	
Maximum Discharge Pressure	3650 PSI	
Maximum Temperature	195°F	
Port Size	Inlet: Outlet	1/2" BSPP-F 3/8" BSPP-F
Dimensions	6.25" x 4.5" x 1.0"	
Weight	2.0 lb.	
Material	Brass, Stainless Steel Plastic, Buna-N	

*General Pump recommends using a safety relief device in conjunction with a positive displacement pump. General Pump is not liable and assumes no responsibility for this valve when used in a customer's high pressure system.*

### PARTS LIST

No.	Part No.	Description	Qty.
1.	Y60005831	Outlet Fitting, 3/8 BSP	1
2.	Y10307002	O-Ring, .739 x .070	2
3.	Y60005351	SS Spring, .453 x .028	1
4.	Y60005231	Hex Check Valve	1
5.	Y14410100	Gasket, 1/2" BSP	2
6.	Y60078335	Manifold, 1/2" BSPP-F	1
7.	Y60100831	Hollow Screw, 1/2", Zinc	1
8.	Y60093131	Seat holder, L 16 mm	1
9.	Y10310996	O-Ring, .406 x .095 Viton	1
10.	Y60078435	Brass Valve Body	1
11.	Y60025920	SS Seat, 8.5 mm	1
12.	Y60170821	SS Shutter M6	1
13.	Y60100731	Hollow Screw, 3/8 BSPP	1
14.	Y14410000	Gasket, 3/8 BSP	2
16.	Y10306801	O-ring, .676 x .070	1
17.	Y60070831	Piston Housing	1
18.	Y16210000	Set Screw, M4 x 4	1
19.	Y60101831	Ring Nut, M18 x 1	1
20.	Y60070451	SS Piston	1
21.	Y10316900	O-Ring, .237 x .104	2
22.	Y10402300	Backup Ring, .433 x .251	1
23.	Y10321300	O-Ring, .237 x .119	1
24.	Y10402400	Backup Ring, .451 x .276	1
25.	Y60031061	Spring Seat, Zinc Plated	1
26.	Y60031361	White Spring	1
27.	Y60030431	Brass Cap	1
28.	Y60031584	Plastic Knob	1



# YVB75KDMN

## Unloader Valve w/Plastic Knob

### APPLICATION

This product is to be used with clean, fresh water. For different or corrosive liquids, contact GP Companies Inc. technical support department. With not-clean liquids, appropriate filtration should be installed.

Select the valve based on the nominal operating rating: system rated pressure, max flow and max temperature.

Under no circumstances should the pressure of the system exceed the **maximum** rated pressure of any component.

When installed on hot water cleaners, this valve is to be installed before the boiler.

### INSTALLATION

On a system that produces hot water, consider installing safety devices which limit the accidental increase of the fluid temperature.

Always install a safety valve to protect the operator and system.

Choose a correct nozzle size, able to discharge regularly, on bypass, at least 5% of the total flow of the system, in order to achieve a constant pressure, and avoid troublesome pressure spikes.

When the nozzle wears, the pressure drops. After installing a new nozzle, re-adjust the system to the original pressure setting.

### PROBLEMS & SOLUTIONS

PROBLEMS	PROBABLE CAUSES	SOLUTIONS
Unloader cycles	Damaged seat or cone Fitting leaking Restricted bypass	Replace Check and renew Clean or adapt
Unloader does not come up to pressure	Unloader not properly sized Foreign materials between seat and shutter Piston o-ring worn out Nozzle worn out	Select a proper spring or a new unloader Clean the seat Replace Replace
Pressure peaks	Spring totally compressed Excessive flow in bypass There is not a min. 5% of total flow in bypass	Loosen and change nozzle size Select another unloader Adjust size of piping Adjust
Unloader does not bypass at low pressure	Check valve jammed Check valve o-ring worn out Foreign materials on check valve	Clean or replace Replace Clean
Chemical injector does not draw solution	Foreign matter in chemical hose Foreign matter in check valve Insufficient pressure drop across injector	Clean Clean Put system in low pressure mode Shorten discharge hose Check spray tip

### DIMENSIONAL DRAWING

