



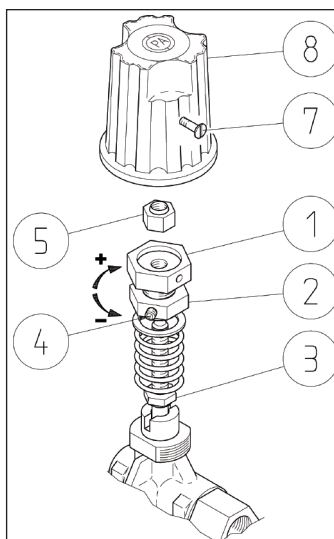
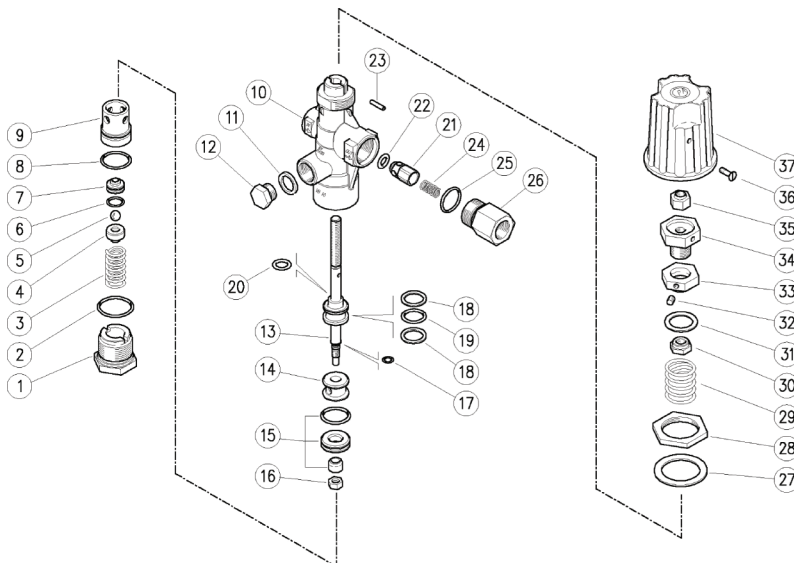
General Pump recommends using a safety relief device in conjunction with this unloader valve when installed on a positive displacement pump. General Pump is not liable and assumes no responsibility for this valve when used in a customer's high pressure system.

SPECIFICATIONS

Part Number	YU3678	
Operating Pressure	3200 PSI	
Maximum Pressure	3650 PSI	
Maximum Flow	8.0 GPM	
Temperature	195°F	
Port Sizes:	Inlet	3/8" NPT-F
	Discharge	3/8" NPT-F
	Hosebarb	3/8" NPT-F
Dimensions	3.3" x 2.0" x 7.2"	
Shipping Weight	2.5 lbs.	
Materials	Brass, Stainless, Plastic, Buna-N	

PARTS LIST

Item	Part Number	Description	KIT	Qty
1	Y60110131	Lower Plug, M27 x 1.5, brass		1
2	Y10307401	O-ring, 1.78 x 12 mm	*	1
3	Y60110251	Spring, 2.5 x 12.6 x 26, SS		1
4	Y60111231	Housing, Ball		1
5	Y14742150	Ball, 1/4", SS	*	1
6	Y10305901	O-ring, 1.78 x 11.11 mm	*	1
7	Y60110351	Seat, 5 x 14 x 7 mm, SS	*	1
8	Y10307201	O-ring, 1.78 x 20.35 mm	*	1
9	Y60110731	Spacer Ring, 9 x 24 x 29 mm, Brass		1
10	Y60112035	Housing		1
11	Y14404200	Washer, 16.7 x 22 x 1.5 mm.		1
12	Y60002531	Screw, Brass,		1
13	Y60110623	Piston	*	1
14	Y60110531	Spacer Ring, 8.5x20.8x14.5mm		1
15	Y60111624	Seat, 10mm+O-ring	*	1
16	Y11454000	Hex Nut, M6, SS		1
17	Y10300101	O-ring, 1 x 4 mm	*	1
18	Y10405600	Back-up Ring	*	2
19	Y10318000	O-ring, 2.62 x 15.08 mm	*	1
20	Y10317008	O-ring, 2.62 x 7.6 mm	*	1
21	Y60005231	Shutter Pin, Brass		1
22	Y10321300	O-ring, 3 x 6 mm	*	1
23	Y15102100	Roll Pin, 3 x 14 mm, SS		1
24	Y60005351	Spring, 0.7x9x20mm, SS		1
25	Y10307002	O-ring, 1.78 x 18.77 mm	*	1
26	Y60005931	Fitting, Outlet		1
27	Y14358200	Washer, 30.5 x 42 x 2 mm		1
28	Y60225431	Ring Nut, M30, Brass		1
29	Y60220361	Spring, 4.2 x 27.4 x 31 mm		1
30	Y60220731	Ring Nut, M8, Brass		1
31	Y60220884	Washer, 19 x 26 x 1.5 mm		1
32	Y16210500	Set Screw, M5 x 6 mm		1
33	Y60225231	Ring Nut, M16 x 1, Brass		1
34	Y60225331	Regulating Pin, Brass		1
35	Y11458910	Hex Locknut, M8		1
36	Y16183800	Screw, M4 x 10 mm		1
37	Y60225184	Valve Regulating Knob		1
*	YKITU3678	Repair Kit		



MIN & MAX PRESSURE SETTING PROCEDURE

- Loosen the stop dowel (4) and screw on completely the nut (2) on the register (1) counter-clockwise.
- Fasten the register (1) together with the nut (2) compressing the spring down until the register meets the stop nut (3).
- Screw on the nut (2) until you reach the wanted maximum pressure (which should never exceed 3200 PSI) paying attention that at least 5% of the flow goes to by-pass. Lock the nut (2) with the stop dowel (4).
- Unscrew the register (1) releasing the spring and lower the pressure to the minimum that can be fixed positioning the stop nut (5).
- Assemble the knob (8) and fix it to the register (1) with the screw (7). You may set a drop of paint on the screw (7) to keep track of the setting.

