



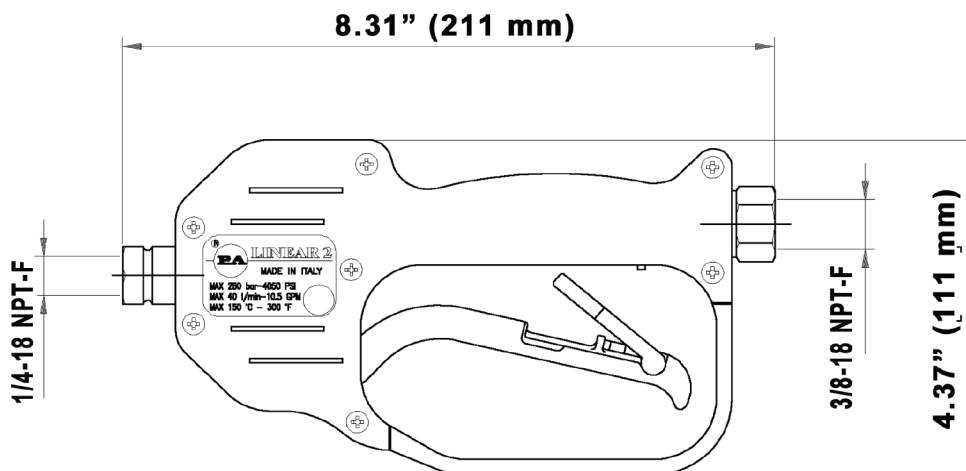
FEATURES

- Shockproof plastic housing
- Ergonomic design
- Stainless Steel seat and ball
- Minimizes fatigue for the operator
- Internal construction of brass and Stainless Steel

SPECIFICATIONS

Part Number	YG4000S
Maximum Volume	10.5 GPM
Maximum Discharge Pressure	3650 PSI
Maximum Fluid Temperature	320°F
Inlet Port Thread	3/8"-18 NPT-F
Discharge Port Thread	1/4"-18 NPT-F
Weight	1.4 lbs
Dimensions	8.3" x 4.3" x 1.2"
Materials	Stainless Steel, Brass, Plastic, Buna-N, Teflon

DIMENSIONS



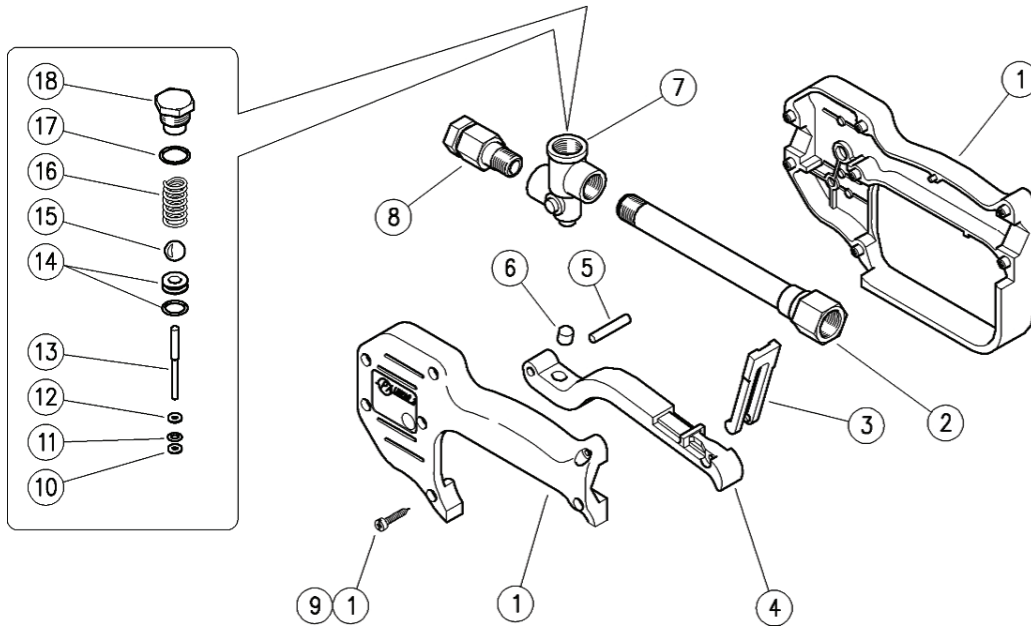
YG4000S

Spray Gun

GENERAL PUMP

A member of the Interpump Group

PARTS LIST



No.	Part No.	Description	Qty.
1.	Y30061624	Housing Kit	1
2.	Y30253435	Tube, 3/8 NPT-F	1
3.	Y30151084	Safety Latch	1
4.	Y30060384	Trigger	1
5.	Y30251731	Pin, 5 mm	1
6.	Y30037584	Striker, 8x7.1 mm, Plastic	1
7.	Y30060535	Linear Brass Body	1
8.	Y30060731	Tube, 1/4 NPT-F	1
9.	Y16307700	Screw, 3.5 x 18 mm	7

No.	Part No.	Description	Kit	Qty.
10.	Y10401800	Backup Ring, 3.2 x 7.5 mm		1
11.	Y10316500	O-ring, 2.62 x 2.84 mm		1
12.	Y14351100	Washer, SS, 3 x 7 mm		1
13.	Y30060451	Pin		1
14.	Y30201420	Seat and O-ring		1
15.	Y14744310	Ball, SS, 11/32		1
16.	Y30305451	Spring		1
17.	Y10306401	O-ring, 1.78 x 14 mm		1
18.	Y30305331	Plug, M16		1

YKITG4000S Repair Kit, YG4000S

INSTRUCTIONS

This product is to be used with clean, fresh water. For use involving different or corrosive liquids, contact your GP's customer service department. Appropriate filtration should be installed when using unclean liquids. Choose the gun that most closely matches the rated pressure, max flow and max temperature of the pressure wash system. In any case, the pressure of the machine should not exceed the permissible pressure rate imprinted on the gun.

INSTALLATION

This gun was designed to operate with hot water (in compliance with the technical specs), making sure not to exceed the max temperature. Always fit a safety valve to protect the system when the latter is under pressure. Choose a suitable nozzle and adjust the valve mounted in the front of the gun, thus obtaining a constant supply and avoiding unwanted pressure spikes. If the nozzle wears out, the pressure falls. When you install a new nozzle, adjust the system back to the original pressure.

OPERATION

The gun opens and closes a high pressure conduct by means of a piston acting on a seat; the return is controlled by a spring which releases the trigger. Attention: during pump activation ALWAYS set the gun with its safety latch connected in order to prevent accidental openings.

Ref 300408 Rev. E
05-10

GENERAL PUMP 1174 Northland Drive • Mendota Heights, MN 55120
Phone: 651.686-2199 • Fax: 800.535.1745 • e-mail: sales@gpcompanies.com • www.generalpump.com

