

45 mm bore - Triplex Plunger Pump

## FEATURES

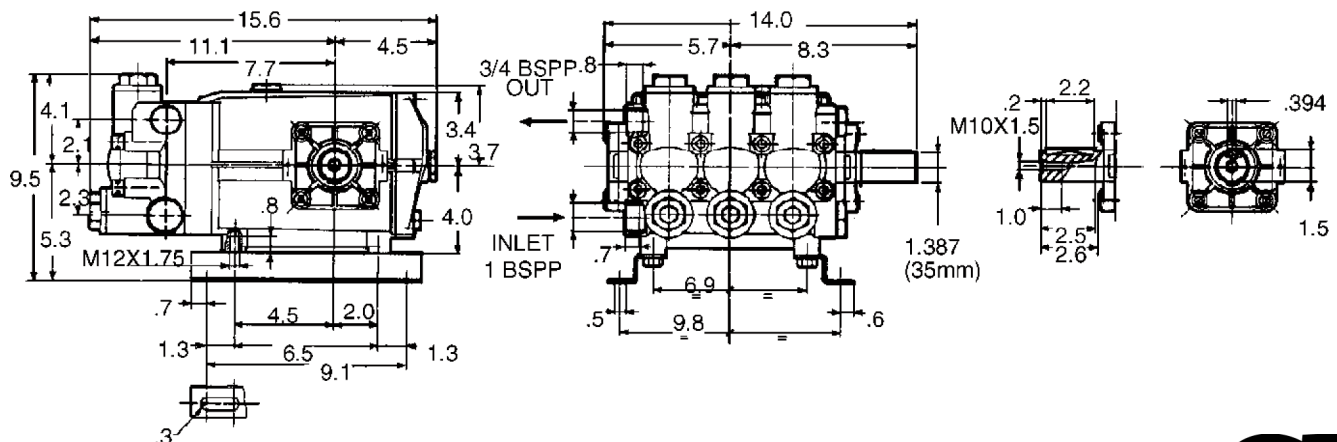
- The industry's choice for high-flow applications
- Forged brass manifold with an exclusive lifetime warranty
- Large-capacity, die-cast, anodized aluminum oil-bath crankcase
- Over-sized connecting rods for maximum life
- Heavy-duty tapered roller bearing
- Solid ceramic plungers with continuously lubricated packings
- Unitized Stainless Steel Inlet and Discharge Valves



## SPECIFICATIONS

Pump Model	T61	T81
Maximum Volume	17.0 GPM	21.0 GPM
Maximum Discharge Pressure	1000 PSI	
Maximum Pump Speed	650 RPM	
Maximum Inlet Pressure	125 PSI	
Maximum Inlet Vacuum	9 ft. water (7.9 in. Hg)	
Plunger Bore	1.772 in. / 45 mm	
Plunger Stroke	.945 in. / 24 mm	1.102 in. / 28 mm
Oil Capacity	91 oz.	
Maximum Fluid Temperature	165° F	
Inlet Port Thread	1" BSP-F	
Discharge Port Thread	3/4" BSP-F	
Shaft Diameter	1.378 in. / 35 mm	
Weight	92.0 lbs.	
Dimensions	15.6" x 14.0" x 9.5"	

## DIMENSIONAL DRAWING

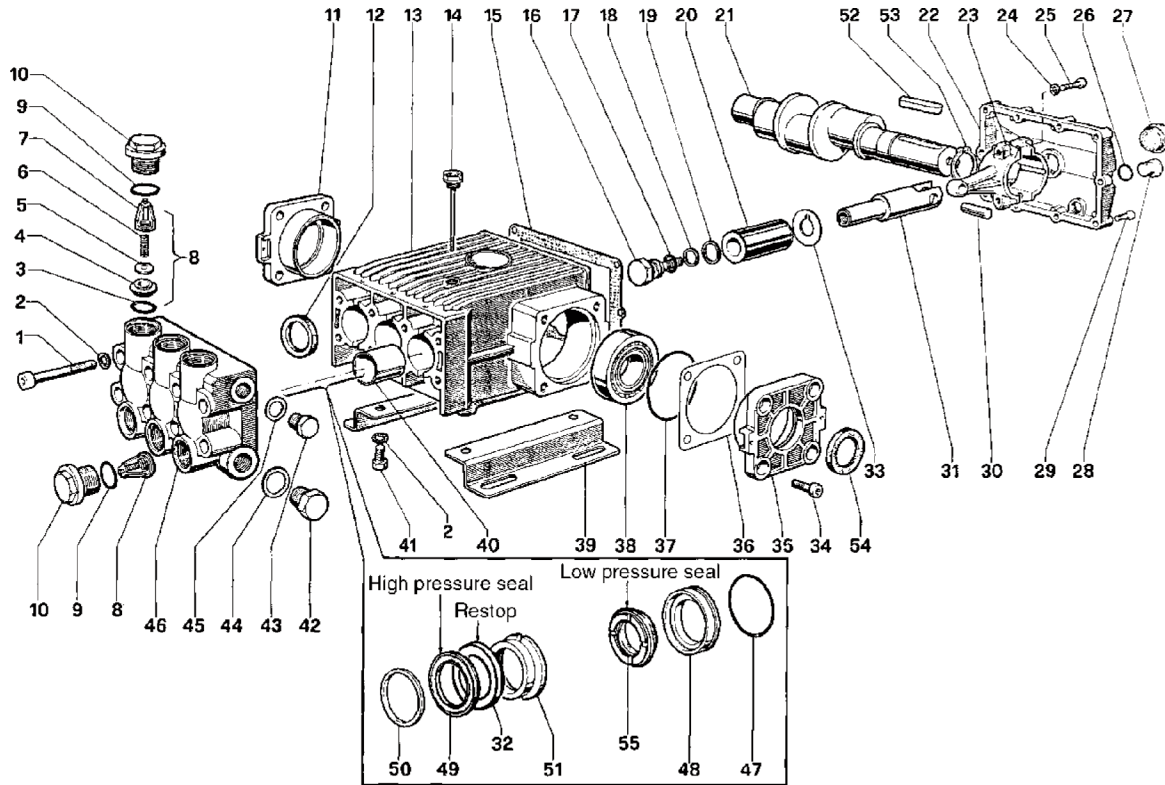


TRIPLEX

TRIPLEX

# T Series 76 - 45 mm bore

**GENERAL PUMP** *A member of the Interpump Group*



## PARTS LIST

ITEM	PART NO.	DESCRIPTION	KIT NO.	QTY.	ITEM	PART NO.	DESCRIPTION	KIT NO.	QTY.	ITEM	PART NO.	DESCRIPTION	KIT NO.	QTY.
1.	99441800	Screw		8	20.	76040209	Plunger		3	38.	91847400	Bearing		2
2.	96719500	Washer		12	21.	76021135	Crankshaft (T61)		1	39.	76200074	Pump Feet		2
3.	90405900	O-ring	43	6		76021035	Crankshaft (T81)		1	40.	90917400	Bushing		3
4.	36201166	Valve Seat	43	6	22.	76160022	Cover		1	41.	99426600	Screw		4
5.	36201076	Valve Plate	43	6	23.	76030301	Connecting Rod		3	42.	98232500	Cap		1
6.	94745000	Spring	43	6	24.	96710400	Washer		6	43.	98226500	Cap		1
7.	36200951	Valve Guide	43	6	25.	99372000	Screw		6	44.	96787000	Washer		1
8.	36706501	Valve Unit Assembly	43	6	26.	90383300	O-ring		2	45.	96770000	Washer		1
9.	90406500	O-ring		6	27.	97596800	Oil Indicator		1	46.	76120041	Manifold		1
10.	98242000	Cap		6	28.	98210000	Cap		2	47.	90390300	O-ring	47, 80	3
11.	76150122	Cover		1	29.	99189700	Screw		10	48.	76080270	Packing Retainer	47, 80	3
12.	90167000	Oil Seal	44	3	30.	97740000	Plunger Pin		3	49.	90285000	Packing	79, 80	3
13.	76010022	Crankcase		1	31.	77050054	Plunger Guide		3	50.	76100293	Head Ring	48, 80	3
14.	98227000	Oil Dip Stick		1	32.	90284800	Restop Ring	79,80,81	3	51.	76217070	Intermed. Ring	80, 81	3
15.	76211984	Cover Gasket		1	33.	96756800	Washer		3	52.	91497800	Key		1
16.	69219566	Plunger Screw	74	3	34.	99365200	Screw		8	53.	90069500	Snap Ring		1
17.	90384100	O-ring	74	3	35.	76150022	Cover		1	54.	90167200	Oil Seal	32	1
18.	90510700	Anti-ext., Ring	74	3	36.	76220078	Shim		2	55.	90285500	Seal, Low Press, 45mm	79, 80	3
19.	96755500	Washer	74	3	37.	90414100	O-ring		2					

## REPAIR KITS

KIT NO.	K32	K43	K44	K47	K48	K74	K79	K80	K81
ITEM NO's INCLUDED IN KIT	54	3, 4, 5, 6, 7, (8)	12	47, 48	50	16, 17, 18, 19	32, 49, 55	32, 47, 48, 49, 50, 51, 55	32, 51
NUMBER OF ASSEMBLIES IN KIT	2	6	3	3	6	3	3	1	3
NUMBER OF CYLINDERS KIT WILL SERVICE	-	3	3	3	3	3	3	1	3

## TORQUE SPECS\*

Pos.	Ft/lb	Nm
1	51.5	70
10	110.6	150
16	29.4	40
25	29.4	40
27	13.2	18
28	29.4	40
29	7.3	10
34	29.4	40
41	51.5	70
42	73.7	100
43	51.5	70

\* Decrease torque by 20% if threads are lubricated

