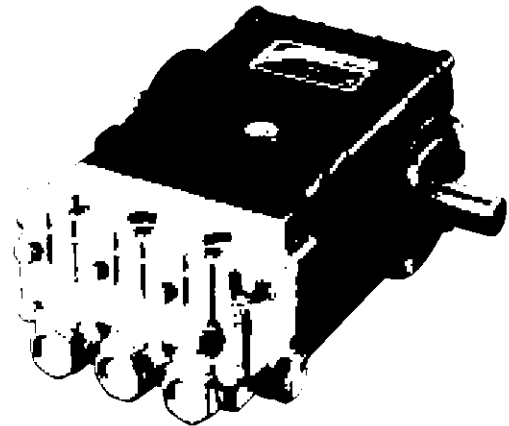


FEATURES

- The preferred pump frame in the pressure cleaning industry
- Forged brass manifold with an exclusive lifetime warranty
- Large-capacity, die-cast, anodized aluminum oil-bath crankcase
- Over-sized connecting rods for maximum life
- Heavy-duty tapered roller bearing.
- Solid ceramic plungers with continuously lubricated packings
- Unitized stainless steel inlet and discharge valves
- Available in left-handed "L" version

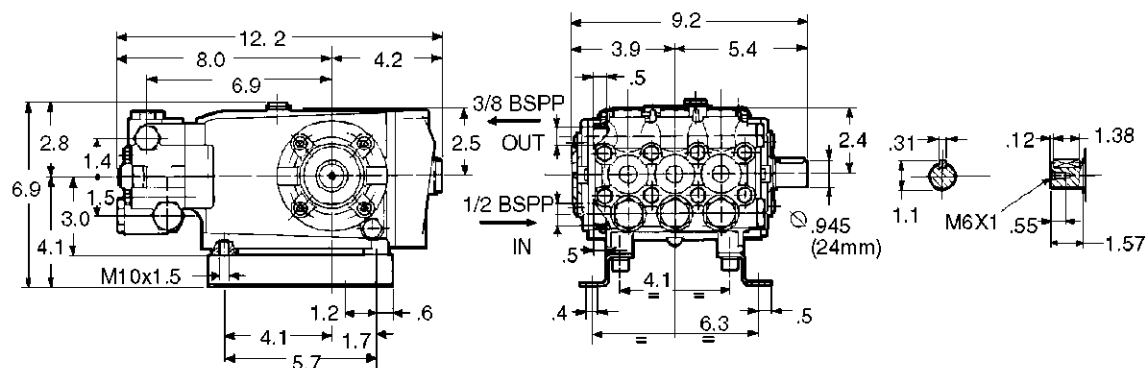


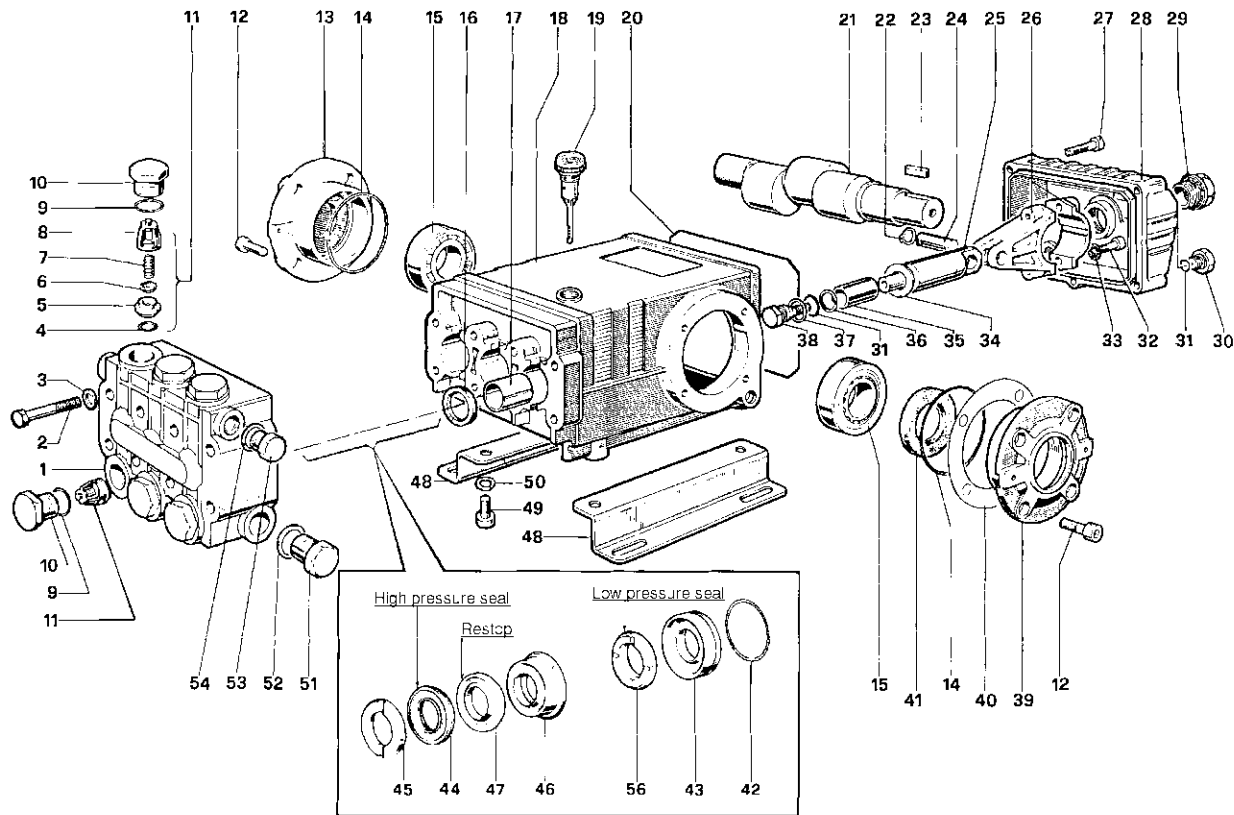
SPECIFICATIONS

Pump Model	T921	T1321	T1621-N
Maximum Volume	5.0 GPM	5.5 GPM	5.0 GPM
Maximum Discharge Pressure	1700 PSI	2100 PSI	2500 PSI
Maximum Pump Speed	1050 RPM	1150 RPM	1050 RPM
Maximum Inlet Pressure	125 PSI		
Maximum Inlet Vacuum	9 ft. water (7.9 in. Hg)		
Bore	.866 in. / 22 mm		
Stroke	.630 in. / 16 mm		
Crankcase Oil Capacity	33.8 oz	40.6 oz..	
Maximum Fluid Temperature	165°F		
Inlet Port Thread	1/2-14 BSPP-F		
Discharge Port Thread	3/8-19 BSPP-F		
Shaft Diameter.	.945 in. / 24 mm		
Weight	32 lbs.		
Dimensions	12.2 x 9.2 x 6.9 in.		

N=Nickel-plated manifold

DIMENSIONAL DRAWING





PARTS LIST

ITEM PART NO.	DESCRIPTION	KIT NO.	QTY.	ITEM PART NO.	DESCRIPTION	KIT NO.	QTY.	ITEM PART NO.	DESCRIPTION	KIT NO.	QTY.
1	47.1208.41	Manifold, Brass	1	19	98.2106.00	Oil Dip Stick	1	37	96.7280.00	Washer	6 3
	47.1209.41	Manifold, Nickel-Plated (T1621-N)		20	90.3922.00	O-Ring, Cover	1	38	47.2195.66	Screw, Plunger	6 3
2	99.3206.00	Screw, M8 x 70	8	21	47.0217.35	Crankshaft	1	39	47.1500.22	Cover, Crankcase	1
3	96.7020.00	Washer, M8.4	8	22	90.0557.00	Ring, Snap	6	40	97.5678.00	Shim	2
4	90.3841.00	O-Ring, .674 x .103	1 6	23	91.4890.00	Key	1	41	90.1648.00	Seal, Oil	3 1
5	36.2003.66	Seat, Valve	1 6	24	97.7380.00	Pin, Wrist	3	42	90.3616.00	O-Ring, 1.364 x .070	14, 29 3
6	36.2001.76	Plate, Valve	1 6	25	47.0506.54	Guide, Plunger	3	43	47.0806.70	Retainer, Packing	14, 29 3
7	94.7376.00	Spring	1 6	26	47.0300.01	Rod, Connecting	3	44	90.2725.00	Packing	29, 148 3
8	36.2002.51	Guide, Valve	1 6	27	99.1912.00	Screw, M6 x 30	5	45	46.1000.51	Ring, Head, M22	11, 29 3
9	90.3847.00	O-Ring, .797 x .103	4, 5 6		99.1837.00	Screw, M6 x 14 (T921)		46	47.2170.70	Intermed. Ring	29, 149 3
10	98.2220.00	Cap	4 6	28	47.1601.22	Cover, Crankcase	1	47	90.2730.00	Restop Ring	29, 148, 149 3
	98.2222.00	Cap, Ni-Plated (T1621-N)	5		47.1600.22	Cover, Crankcase (T921)		48	47.2000.74	Pump Feet	2
11	36.7032.01	Valve Assembly	1 6	29	97.5968.00	Oil Indicator	1	49	99.3644.00	Screw, M10 x 18	4
12	99.3039.00	Screw, M8 x 16	8	30	98.2041.00	Cap	1	50	96.7106.00	Washer, M10.2	4
13	47.1501.22	Cover, Crankcase	1	31	90.3585.00	O-Ring, .426 x .070	6 4	51	98.2176.00	Cap	1
14	90.3913.00	O-Ring, 2.675 x .103	2	32	99.3099.00	Screw, M8 x 35	6	52	96.7514.00	Washer, M21.5	1
15	640047	Bearing, Roller	2	33	96.7014.00	Washer, M8.4	6	53	98.2100.00	Cap	1
16	90.1625.00	Seal, Oil	2 3	34	96.7286.00	Washer, M14	6 3	54	96.7380.00	Washer, M17.5	1
17	90.9126.00	Bushing	3	35	47.0405.09	Plunger, (22 mm)	3	56	90.2728.00	Seal, Low Press., 22mm	29, 148 3
18	47.0105.22	Crankcase	1	36	90.5067.00	Ring, Back-up	6 3				

REPAIR KITS

KIT NO.	1	2	3	4	5	6	11	14	29	148	149
ITEM NO.s INCLUDED IN KIT	4, 5, 6, 7, 8 (11)	16	41	9, 10	9, 10	31, 34, 36, 37, 38	45	42, 43	42, 43, 44, 45, 46, 47, 56	44, 47, 56	46, 47
NUMBER OF ASSEMBLIES IN KIT	6	3	2	6	6	3	6	3	1	3	3
NUMBER OF CYLINDERS KIT WILL SERVICE	3	3	-	3	3	3	3	3	1	3	3

TORQUE SPECS*

Position	Ft.-lbs.
2	22.1
10	73.7
12	14.7
27	7.3
29	13.2
30	14.7
32	14.7
38	14.7
49	29.4
51	29.4
53	29.4

*Decrease torque by 20% if threads are lubricated.