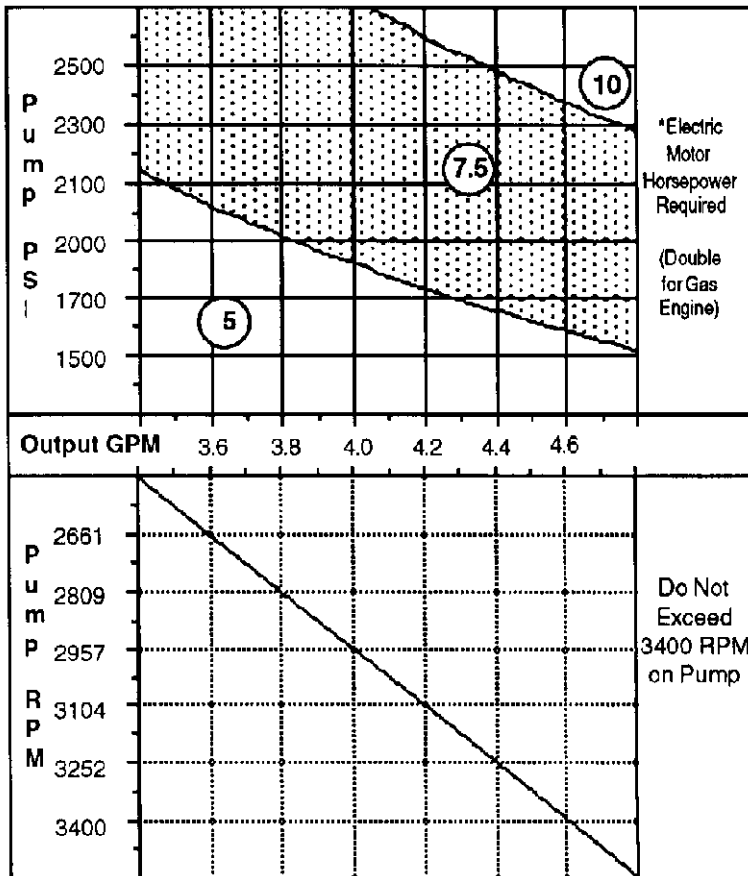


MAXIMUM PERFORMANCE: 4.6 GPM @ 2500 PSI @ 3400 RPM

APPLICATION DATA



Example: (You require 4.4 GPM @ 2300 PSI.) 4.4 GPM and 2300 PSI lines cross within 7.5 HP motor band (required motor HP). Follow 4.4 GPM vertical line down to diagonal line in lower chart, then left to 3252 RPM (required pump RPM).

LUBRICATION Fill crankcase to dot on oil gauge window per specifications with General Pump Series 100 oil. Change oil after 40-hour break-in period. Change oil every three months or at 500-hour intervals thereafter.

SPECIFICATIONS

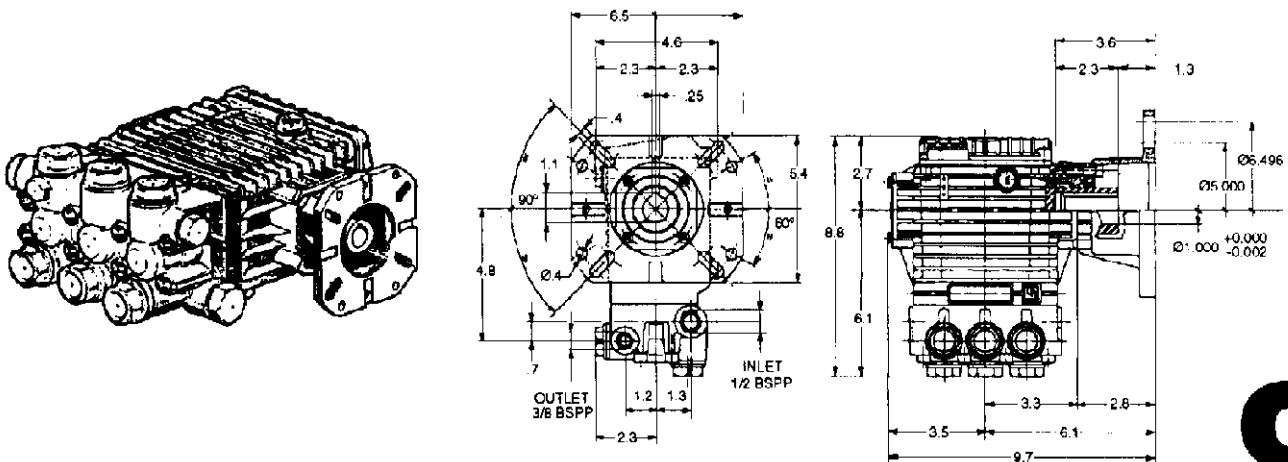
Max. Volume	4.6. GPM
Max. Discharge Pressure	2500 PSI
Max. Inlet Pressure	125 PSI
Max. Inlet Vacuum Ft. Water (in. Hg)	3 (2.6)
Max. Pump Speed	3400 RPM
Bore	.591 in. (15 mm)
Stroke	.433 in. (11 mm)
Crankcase Capacity Use General Pump Series 100 Oil	14 oz.
Max. Fluid Temperature	165°F
Inlet Port Thread	1/2-14 BSPP - F
Discharge Port Thread	3/8-14 BSPP - F
Shaft Diameter	1.000 in. I.D. (25 mm)
Weight	20 lb.
Dimensions	8.8 x 9.7 x 6.5 in.

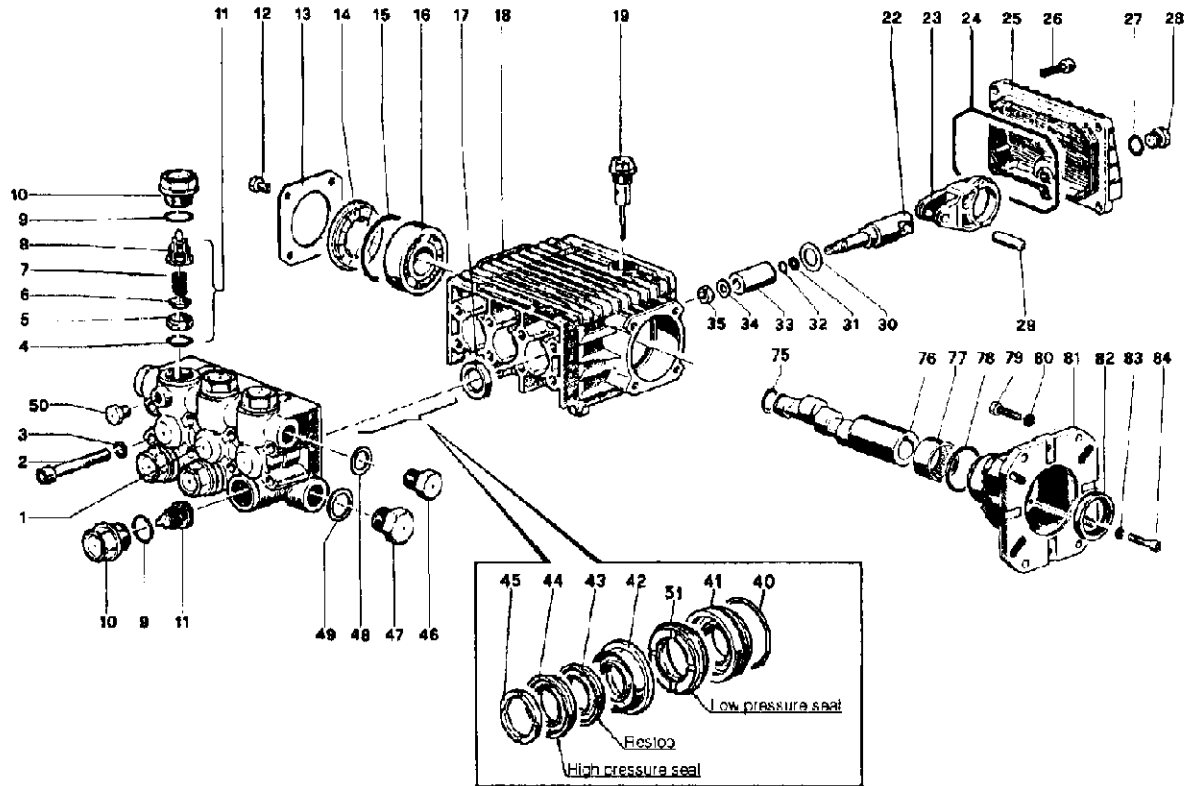
INSTALLATION

1. Apply Sundel Gel (included) or other anti-seize compound to engine output shaft prior to assembly.
2. Align the pump's key slot with the key on the engine shaft and slide the pump onto the shaft.
3. Secure the pump to the engine with the four bolts and washers. Be sure the mounting pads on the engine face contact the pump housing before installing bolts. Do not over tighten. Torque to 14.7 ft./lbs. maximum. **For best results**, allow Sundel Gel to cure for 1/2 hour before running unit.
4. When using the threaded holes in the pump for disassembly, be careful not to damage the engine face.

Sundel Gel is also available in a 10.3 oz. tube: #100223 - single tube, #100224 - 12 pack.

DIMENSIONAL DRAWING





PARTS LIST

ITEM	PART NO.	KIT NO.	DESCRIPTION	QTY.	ITEM	PART NO.	KIT NO.	DESCRIPTION	QTY.	ITEM	PART NO.	KIT NO.	DESCRIPTION	QTY.
1.	44.1200.41		Pump Head	1	22.	44.0500.66		Piston Guide	3	45.	51.1000.51	90,130	Head Ring	3
2.	99.3175.00		Screw	8	23.	44.0300.22		Connecting Rod	3	46.	98.2100.00		Cap Screw	1
3.	96.7014.00		Washer	8	24.	90.3920.00		O-Ring	1	47.	98.2176.00		Cap Screw	1
4.	90.3841.00	123	O-Ring	6	25.	44.1600.22		Rear Cover	1	48.	96.7380.00		Washer	1
5.	36.2003.66	123	Valve Seat	6	26.	99.1837.00		Screw	5	49.	96.7514.00		Washer	1
6.	36.2001.76	123	Valve	6	27.	90.3585.00		O-Ring	1	50.	98.1966.00		Cap Screw	1
7.	94.7376.00	123	Spring	6	28.	98.2041.00		Cap Screw	1	51.	90.2617.00	88,130	Seal, Low Press.	3
8.	36.2025.51	123	Valve Cage	6	29.	97.7340.00		Pin	3	75.	90.0635.00		Retaining Ring	1
9.	90.3847.00	124	O-Ring	6	30.	96.7350.00		Washer	3	76.	44.0212.65		Crankshaft	1
10.	98.2226.00	124	Cap	6	31.	90.5022.00		Anti-Ext. Ring	3	77.	91.8568.00		Roller Bearing	1
11.	36.7115.01	123	Valve Assembly	6	32.	90.3572.00		O-Ring	3	78.	90.4097.00		O-Ring	1
12.	99.1807.00		Screw	4	33.	52.0400.09		Piston	3	79.	99.2755.00		Screw, 5/16x1	4
13.	50.1500.74		Bearing Cover	1	34.	96.7008.00		Washer	3		99.3345.00		Screw, 3/8x1	4
14.	44.2118.01		Spacer	1	35.	92.2216.00		Nut	3	80.	96.7020.00		Washer, Ø8 mm	4
15.	90.4097.00		O-Ring	1	40.	90.3612.00	125,130	O-Ring	3		96.7104.00		Washer, Ø10 mm	4
16.	91.8328.00		Ball Bearing	1	41.	44.0800.70	125,130	Packing Retainer	3	81.	10.0518.22		Gas Flange	1
17.	90.1614.00	23	Oil Seal	3	42.	52.2166.70	89,130	Intermed. Ring	3	82.	90.1690.00		Oil Seal	1
18.	44.0100.22		Crankcase	1	43.	90.2622.00	88,130	Packing	3	83.	96.6938.00		Washer	4
19.	98.2103.00		Oil Dip Stick	1	44.	90.2620.00	88,130	Packing	3	84.	99.1912.00		Screw	4

REPAIR KITS

KIT NO.	23	88	89	90	123	124	125	130
ITEM NO'S INCLUDED IN KIT	17	43, 44, 51	42	45	4, 5, 6, 7, 8, (11)	9, 10	40, 41	40, 41, 42, 43, 44, 45, 51
NUMBER OF ASSEMBLIES IN KIT	3	3/6	3	6	6	6	3	1/2
NUMBER OF CYLINDERS KIT WILL SERVICE	3	3	3	3	3	3	3	1

TORQUE SPECS*

Position	Ft.-lbs.
2	14.7
10	73.7
12	7.3
26	7.3
28	14.7
35	11.0
46	29.4
47	29.4
79	14.7
84	7.3

*Decrease torque by 20% if threads are lubricated.

