



**NORTH
AMERICA**

First Choice When Quality Matters



1-800-346-4876

2010

Pumps and Accessories

2010 Price List - Pumps and Accessories

1958



2010



Modena Plant



AR North America



Shanghai Plant (PRC)



Bomporto Plant

1-800-346-4876



AR North America

AR High Pressure Pumps are the state-of-the-art choice since 1958.



Annovi-Reverberi Pressure Pumps: Engineered In the Same Tradition as an Italian Sports Car

Some names are simply synonymous with excellence. In the world of high pressure pumps, that distinction goes to Italian manufacturer Annovi-Reverberi. For more than 50 years, AR has combined quality materials with precision engineering to become the number one supplier of triplex plunger pumps for power washer manufacturers.

But as the Italians like to say, talk is cheap. Look closer at exactly what sets AR pumps apart from the rest of the pack:

- **Doubly Durable Materials**

Pump manifolds are forged from high strength brass for long-term use and provide optimum water flow. The plungers are also made from a unique aluminum oxide blend of thick ceramic for extra long life and resilience.

- **Extended Pump Life**

Crankcases are die cast in aluminum with oversized cooling fins to extend pump life, especially during continuous operation. And premium bearings provide exceptional load support while maintaining lower crankcase operating temperatures.

- **Innovative Design**

Valves, seats and springs are stainless steel and feature meticulously designed cages for positive seating and longer valve life. The seals and V-packings are continuously lubricating for consistent performance. Plus, the oil seals are triple-lipped and spring loaded for greater toughness.

- **Engineering to the Extreme**

Piston guides are high strength stainless steel, while extra-large connecting rods are made with a special alloy. Replacement parts are machined to the same exacting standards and specifications as original pieces; thus, repaired pumps will perform just like the new.

Of course, exceptional people are the final ingredient needed to design, produce, market and distribute superior Annovi-Reverberi pumps. Here again we set ourselves apart in several important ways. First, high quality standards are exceeded for all pump materials throughout the manufacturing and testing process. Second, new technologies are constantly being explored and developed to achieve world-class products. And finally, AR pumps are distributed here by AR North America, a family-based operation that has built a large and loyal customer base in industrial, commercial and agricultural markets.

1-800-346-4876



- 5 RMV 3400
RMW 3400
- 6 SJV 3400
SJW 3400
XJV 3400
- 7 RSV 3400
- 9 RC 1450
RCA 1750
- 10 RCA 1750
RCMA 1750
RCV 3400

Consumer Pumps

- 11 XT 1450
XTA 1750
- 12 XTA 1750
XTV 3400
- 13 XTV 3400
- 14 XM 1450
XMA 1750
- 15 XMA 1750
XMV 3400
- 16 XMV 3400
- 17 SXMA 1750
SXMV 3400
- 18 RK 1450
RKA 1750
RKW 950
- 19 RKA 1750
RKV 3400
- 20 GRKV 3400
RKA 1750
- 21 RW 1450
RW 1750
- 22 XW 1450
XWA 1750
- 23 XWT 500
XWF 1000
XWL 1450
XWLA 1750
- 24 SXW 1450
SXWA 1750
- 25 SHP 1450

Industrial Pumps

- 26 RTP 1000
RTF 800
RTJ 1000
- 27 XMA-SS 1750
XMA-SS 1450
- 28 RKA-SS 1750
- 29 RK-SS 1450
RKA-SS 1750
- 30 XWL-SS 1450
XWLA-SS 1750
- 31 XHW 1450
RHW 1450
- 32 Electric Motors
- 33 Hydraulic Drive Units
- 34 Pump-Motor Combo

Specialty Pumps / Motors

- 35 Crankcase Oil
Pump Saver
Gear Boxes
Inlet King Nipples
Rail Kits
Flange/Couplings
Electric Clutch
- 36 Thermal Relief Valve
Jetter Valve
HP Ball Valves
Easy Start Valve
Safety Release Valve
Security Valve HP
Threaded Valve Cap
Relief Valve HP
Balance Relief Valve
- 37 Bolt on Regulator
Control Sets
Unloader Valves
- 38 Safety Valve
Regulators
Multi Gun Unloader
HP Unloader
- 39 SS Unloader Valve
Flow Switch
Pressure Switches
Unloader Valve w/
Pressure Switch
- 40 Vacuum Switch
Spray Gun -
Front Entry
Rear Entry
- 41 Spray Gun -
Weeping
- 42 Spray Gun -
Open Gun
HP
w/Extensions
- 43 Trigger Gun Assembly
Lances - Extensions/
Nozzle

Accessories

- 44 Lances - Extensions /
Nozzles
Dual Lances
- 45 Lances / Extensions
HP Lances/Extensions
Lance Handle
- 46 Telescoping Lances
Nozzle Holders
Vari-Spray Nozzle
- 47 Turbo Nozzles
- 48 HP Nozzles
Sewer Nozzles
Turbo Nozzle Inlet
Filters

Accessories

- 49 Injectors
- 50 Ball Quick Couplings/
Quick Connect Plug
Swivels - HP
- 51 Swivel Coupler /
Quick Couplings &
Plugs
Connectors
Foamers
- 52 Line Strainers
Y Filters
Detergent Suction
Filter
Garden Hose
Adapters

Accessories

- 53 Detergent Hose
Thermostats
Pressure Gauges
Sandblast Kits
- 54 Sludge Pump
Hoses
Drain Cleaner Hose Kit
- 55 Hoses
Hose Reel
Surface Cleaners
Spray Nozzles for
Surface Cleaners
- 56 Water Broom
Carts
Pressure Washer
Accessories
Hydraulic Pump
Accessories
- 57 HP Spray Nozzles

Accessories

- 59 Cleaning Heads
- 60 Rotosh Cleaning
Heads
- 61 HP Accessories
Security Valve HP
Relief Valve HP
HP Unloader
Bolt on Unloader
Spray Gun HP
HP Lances/Extensions
Swivel HP
HP Nozzle
HP Ball Valves
- 62 GF Accessories
Adapters
Extensions/Dispenser
Rotating Brushes
Fixed Brushes
Brush Kit
- 63 Car Wash Equipment
- 64 Car Wash Equipment
- 66 AR Blue Clean
Electric Pressure
Washer

Accessories

RMV / RMW - Economy Axial Radial Drive Pumps



FEATURING

MANIFOLD: Aluminum precision die cast special anticorrosion finish for pumps RMW2G24 & RMW2.2G20D, all other pumps are brass and forged brass.

BOLTS: Three 6mm cadmium plated steel

PLUNGERS: Hardened stainless steel.

CRANKCASE: Precision die cast, large coupling fins.

BEARINGS: Premium oversized ball and needle bearings.

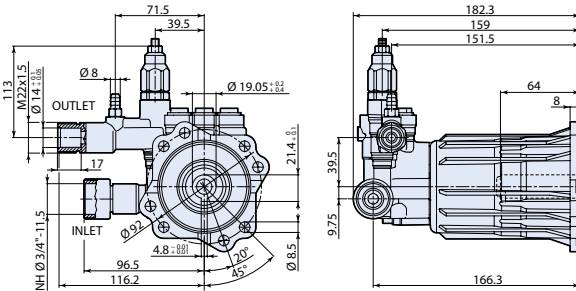
VALVES, SEATS, AND SPRINGS: Plastic poppet under 2300 psi, stainless steel poppet over 2300 psi, seat and cage, stainless steel spring.

SEALS: Buna-N 2000 and 2400 psi single seal, 2500 psi to 3000 psi dual seals.

DIMENSIONS

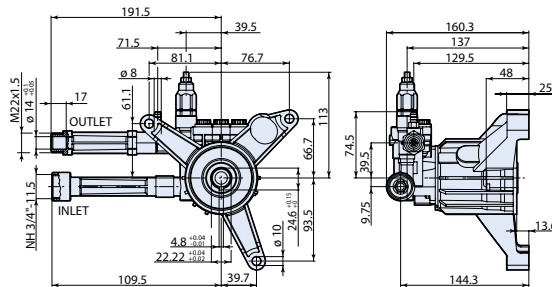
RMV

D Version
Hollow Shaft \varnothing 3/4"



RMW

D Version
Hollow Shaft \varnothing 7/8"



RMV 3400 RPM D VERSION 3/4" WITH GAS ENGINE FLANGE

MODEL	MAX GPM	MAX L/MIN	MAX PSI	MAX BAR	POWER EBHP	BORE DIA MM	STROKE MM	CRANKSHAFT ID STAMP	WEIGHT LBS.	LIST PRICE
RMV2G25D	2	7.6	2500	172	3.4	12	8.3	5	7.5	
RMV2.3G30-EZ(a)	2.3	8.7	3000	200	3.4	12	9.7	1	7.5	
RMV2.5G27D	2.5	9.5	2700	186	3.4	12	9.7	1	7.5	
RMV2.5G30D	2.5	9.5	3000	200	4.3	12	9.7	1	7.5	
RMV2.5G30-EZ(a)	2.5	9.5	3000	200	4.3	12	9.7	1	7.5	

RMW 3400 RPM D VERSION 7/8" WITH VERTICAL GAS ENGINE FLANGE

RMW2G24	2	7.6	2400	166	3.2	12	8.3	5	7.3	
RMW2G25D	2	7.6	2500	172	3.4	12	8.3	5	7.7	
RMW2.2G24-EZ(a)	2.2	8.3	2400	166	3.6	12	8.3	5	7.7	
RMW2.2G24-EZ-SX(b)	2.2	8.3	2400	166	3.6	12	8.3	5	7.7	
RMW2.2G24-ST(c)	2.2	8.3	2400	166	3.6	12	8.3	5	7.7	
RMW2.5G25D	2.5	9.5	2500	172	4.3	12	9.7	1	7.7	
RMW2.5G26D-F7(d)	2.5	9.5	2600	173	4.3	12	9.7	1	7.7	
RMW2.5G28-EZ-SX	2.5	9.5	2800	193	4.3	12	9.7	1	7.7	
SRMW2.2G26-EZ	2.2	8.3	2600	173	4.3	12	9.7	1	7.7	
SRMW2.2G26-EZ-SX	2.2	8.3	2600	173	4.3	12	9.7	1	7.7	

Oil Capacity = 2.2 oz

Maximum Fluid Temperature = 140° F

Inlet Thread = 3/4" GH

Discharge Thread = 22mm

(a) Pumps with EZ suffix features EZ start valves. (b) Pump with SX suffix port rotated 180° from standard (c) Pump with ST suffix features short tubes inlet and outlet. (d) With 609A-SAE Flange

SPECIAL NOTE: Use only AR64545 for the RM/XJ/SJ/BK Series pumps only: Do NOT change oil. Use oil only to add if low. This oil is a specially formulated synthetic with special additives for the demands of the RM, XJ, SJ and BK pump series. No other oil is factory approved for these pumps, and could result in pump failure.

*Available upon special request (non-stock item)

SJV / SJW / XJV - Super Duty Axial Radial Drive Pumps



FEATURING

MANIFOLD: High strength forged brass for long term use.

BOLTS: Three 10mm grade 8.8.

PISTONS: Ceramic coated stainless steel for longer pump life in harsh environments.

CRANKCASE: Precision die-cast, large cooling fins for maximum heat dissipation. Sight glass, fill and drain plugs.

BEARINGS: Angular contact ball bearing stabilizes the crankshaft and one thrust needle bearing absorbs the plunger load and assure long radial plate life. All of the thrust plates are made of heat treated hardened steel for extended life.

VALVES, SEATS, AND SPRINGS: Stainless steel with specially designed Ultra Form cages provide extra long life and positive seating.

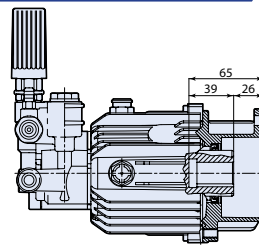
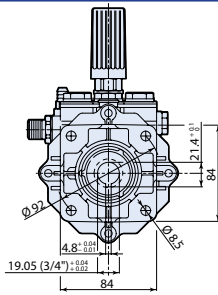
SEALS AND V-PACKINGS: Continuously lubricating for extended life.

UNLOADER: Built in to optimize performance while reducing setup time. Integral trap pressure, fixed or adjustable chemical injector.

DIMENSIONS

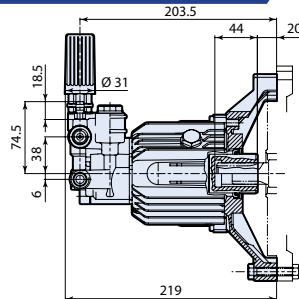
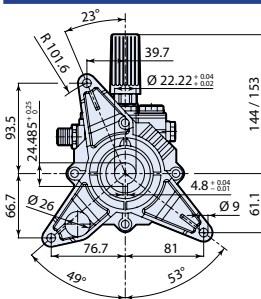
SJV

D Version + F7
Hollow Shaft \varnothing 3/4"



SJW

D Version + F27
Hollow Shaft \varnothing 7/8"



SJV 3400 RPM D VERSION 3/4" WITH GAS ENGINE FLANGE

MODEL	MAX GPM	MAX L/MIN	MAX PSI	MAX BAR	POWER EBHP	BORE DIA MM	STROKE MM	CRANKSHAFT ID STAMP	WEIGHT LBS.	LIST PRICE
SJV2.5G27D-F7M22	2.5	9.5	2700	186	4.5	15	5.8	-	11	
SJV2.5G27D-F7	2.5	9.5	2700	186	4.5	15	5.8	-	11	
SJV3G27D-F7	3	11.4	2700	186	5.2	15	6.8	-	11	
SJV3G27D-EZ	3	11.4	2700	186	5.2	15	6.8	-	11	

** 22mm M Outlet

SJW 3400 RPM D VERSION 7/8" WITH VERTICAL GAS ENGINE FLANGE

SJW3G25D-F27	3	11.4	2500	170	5	15	6.8	-	11	
--------------	---	------	------	-----	---	----	-----	---	----	--

XJV 3400 RPM E VERSION 5/8" WITH NEMA 56-C FLANGE

XJV2G15E-F8	2	7.6	1450	100	2	15	4.8	-	11	
XJV3G20E-F8	3	11.4	2000	140	4	15	6.8	-	11	

XJW 3400 RPM D VERSION 7/8" WITH VERTICAL GAS ENGINE FLANGE

XJW24G24D-F27	2.4	9	2400	166	3.9	15	5.8	-	11	
---------------	-----	---	------	-----	-----	----	-----	---	----	--

Oil Capacity = 4.5 oz

Maximum Fluid Temperature = 140° F

Inlet Thread = 1/2" M

Discharge Thread = 3/8" M

SPECIAL NOTE: Use only AR64545 for the RM/XJ/SJ/BK Series pumps: Do NOT change oil. Use oil only to add if low. This oil is a specially formulated synthetic with special additives for the demands of the RM, XJ, SJ and BK pump series. No other oil is factory approved for these pumps, and could result in pump failure.

*Available upon special request (non-stock item)

NEW

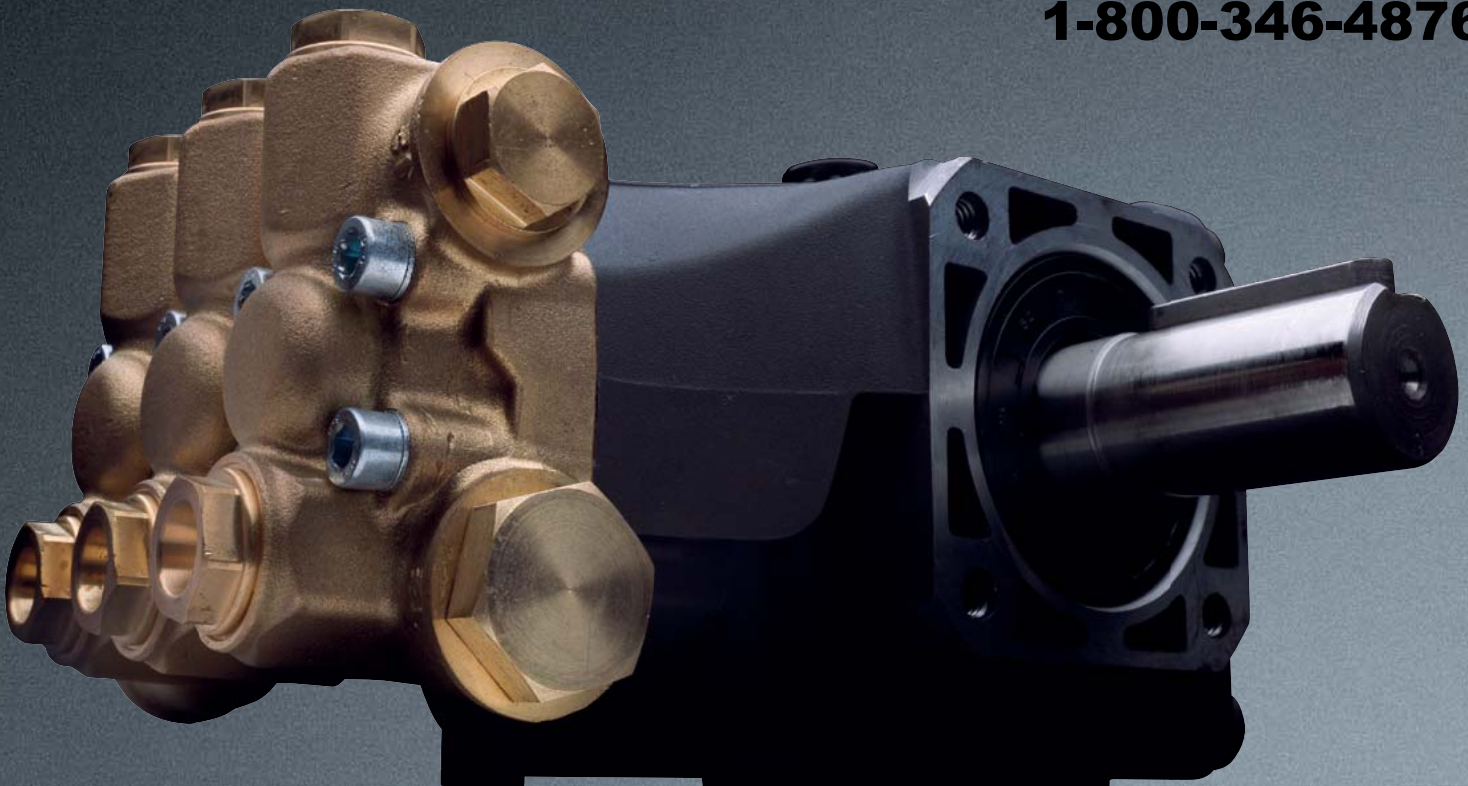
S E R I E S

RC
RCA
RCV



NORTH AMERICA
First Choice When Quality Matters

1-800-346-4876



Versions

RC 1450 rpm
RCA 1750 rpm
N version \varnothing 24mm

RCA 1750 rpm
RCV 3400 rpm
E version \varnothing 5/8" +F8

RCV 3400 rpm
D version \varnothing 3/4" +F7





RC / RCA - Triplex Plunger Pumps



FEATURING

MANIFOLD: High strength forged brass for long term use.

BOLTS: Eight 6mm.

PLUNGERS: NEW Ceramic Plungers, thicker wall to help prevent thermal shock.

VALVES: Stainless Steel, valve seat o-ring is side mounted.

SEALS: High quality high pressure seals. NEW low-pressure seal with a built in scraper.

PISTON GUIDES: Two piece piston guides.

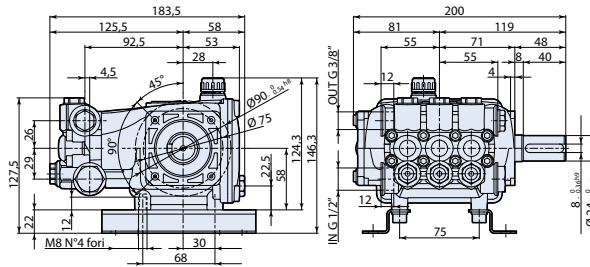
DRIVE END: NEW connecting rod with 12% more load surface. Large side cover sight glass, oversized bearing. Rear cover oil drain.

CRANKSHAFT: Forged, precision ground.

DIMENSIONS

RC / RCA

N Version
Solid Shaft \varnothing 24mm



RC 1450 RPM N VERSION 24MM SOLID SHAFT

MODEL	MAX GPM	MAX L/MIN	MAX PSI	MAX BAR	POWER EBHP	BORE DIA MM	STROKE MM	CRANKSHAFT ID STAMP	WEIGHT LBS.	LIST PRICE
RC11.17N	2.9	11	2500	170	4.9	18	10	4	10	
RC13.17N	3.4	13	2500	170	5.8	18	12.2	2	10	

RCA 1750 RPM N VERSION 24MM SOLID SHAFT

RCA2.5G25N	2.5	9.5	2500	170	4.3	18	6.5	8	10	
RCA3G25N	3.0	11.4	2500	170	5.1	18	8.2	6	10	
RCA3.5G25N	3.5	13.2	2500	170	6.0	18	10	4	10	

Oil Capacity = 9.81 oz

Maximum Fluid Temperature = 140° F

Inlet Thread = 1/2" F

Discharge Thread = 3/8" F

RAIL KITS

AR 2633	1-3/4"
AR 2633H	2-5/8"

SPECIAL NOTE: Use AR64516 Oil. First change oil after 50 hours of use. Then every 500 hours. This oil is specially formulated to provide correct lubrication properties for our pumps. **No** other oil is factory approved for these pumps.

*Available upon special request (non-stock item)



RCA / RCV - Triplex Plunger Pumps



FEATURING

MANIFOLD: High strength forged brass for long term use.

BOLTS: Eight 6mm.

PLUNGERS: NEW Ceramic Plungers, thicker wall to help prevent thermal shock.

VALVES: Stainless Steel, valve seat o-ring is side mounted.

SEALS: High quality high pressure seals. NEW low-pressure seal with a built in scraper.

PISTON GUIDES: Two piece piston guides.

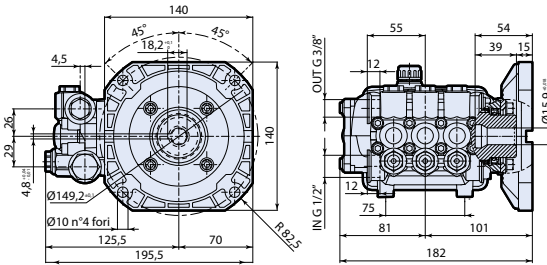
DRIVE END: NEW connecting rod with 12% more load surface. Large side cover sight glass, oversized bearing. Rear cover oil drain.

CRANKSHAFT: Forged, precision ground.

DIMENSIONS

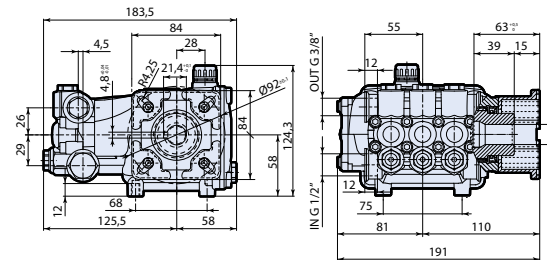
RCA / RCV

E Version + F8
Hollow Shaft \varnothing 5/8"



RCV

D Version + F7
Hollow Shaft \varnothing 3/4"



RCA 1750 RPM E VERSION 5/8" WITH F8 FLANGE

MODEL	MAX GPM	MAX L/MIN	MAX PSI	MAX BAR	POWER EBHP	BORE DIA MM	STROKE MM	CRANKSHAFT ID STAMP	WEIGHT LBS.	LIST PRICE
RCA2G25E-F8	2.0	8.0	2500	170	3.4	18	5.6	9	11	
RCA3G25E-F8	3.0	11.4	2500	170	5.1	18	8.2	6	11	
RCA3.5G16E-F8	3.5	13.2	1600	110	3.8	18	10	4	11	

RCMA 1750 RPM E VERSION 5/8" WITH F8 FLANGE - MISTING

RCMA0.5G15E-F8	0.5	2.3	1500	103	0.5	15	2.6	13	11	
RCMA1G15E-F8	1.0	4.5	1500	103	1.0	15	4.4	11	11	

RCV 3400 RPM E VERSION 5/8" WITH F8 FLANGE

RCV2G25E-F8	2.0	8.0	2500	170	3.4	15	4.4	11	11	
RCV3G25E-F8	3.0	11.4	2500	170	5.1	15	6.5	8	11	

RCV 3400 RPM D VERSION 3/4" WITH F7 FLANGE

RCV2G25D-F7	2.0	8.0	2500	170	3.4	15	4.4	11	11	
RCV2.5G27D-F7	2.5	9.5	2700	186	4.6	15	5.6	9	11	
RCV3G25D-F7	3.0	11.4	2500	170	5.1	15	6.5	8	11	
RCV3.5G25D-F7	3.5	13.2	2500	170	6.0	15	7.4	7	11	

Oil Capacity = 9.81 oz

Maximum Fluid Temperature = 140° F

Inlet Thread = 1/2" F

Discharge Thread = 3/8" F

*Available upon special request (non-stock item)

XTA / XTV - Triplex Plunger Pumps



FEATURING

MANIFOLD: High strength forged brass for long term use.

BOLTS: Six 6mm grade 12.9.

PLUNGERS: A special thick solid ceramic for long life, strong durability and more resilience.

CRANKCASE: Precision die-cast, large cooling fins and anodized for maximum heat dissipation. Sight glass, fill and drain plugs.

BEARINGS: Oversized for maximum life and load disbursement, two ball bearings. Each bearing is held in position on the crankshaft and crankcase by snap rings. This assures positive alignment and centering of the connecting rods and crankshaft in relation to the crankcase, it also eliminates the crankshaft from floating.

VALVES, SEATS, AND SPRINGS: Stainless steel with specially designed Ultra Form material valve cages that are impervious to water absorption and provide long life and positive seating.

SEALS AND V-PACKINGS: Continuously lubricating for extended life.

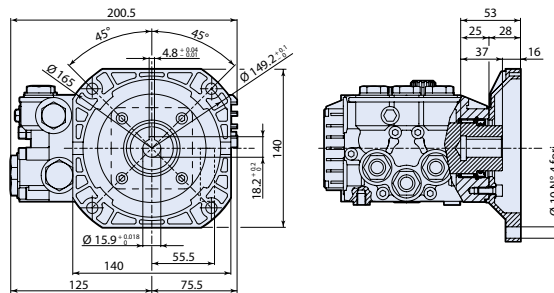
PLUNGER RODS: High strength stainless steel.

CONNECTING RODS: One piece special alloy aluminum based and bronze (+1800 PSI) oversized for maximum strength, load disbursement, and long life. Heavy pin area construction, for added load strength.

DIMENSIONS

XTA / XTV

E Version + F8
Hollow Shaft \varnothing 5/8"



XTA 1750 RPM E VERSION 5/8" WITH NEMA 56-C FLANGE

MODEL	MAX GPM	MAX L/MIN	MAX PSI	MAX BAR	POWER EBHP	BORE DIA MM	STROKE MM	CRANKSHAFT ID STAMP	WEIGHT LBS.	LIST PRICE
XTA0.5G10EBA-F8	0.5	1.9	1000	69	0.4	15	2.2	Z	8.5	
XTA1G15E-F8	1	3.8	1500	103	1	15	4.83	D	10	
XTA2G15EBA-F8	2.11	8	1800	124	2.5	15	9.6	5	10	
XTA2G22E-F8	2.11	8	2200	152	3	15	9.6	5	11	
XTA3G16EBA-F8	3	11.4	1600	110	3	18	9.6	5	10	
XTA3G19E-F8	3	11.4	1900	130	4	18	9.6	5	11	
XTA4G15EBA-F8	4	15	1500	103	4	18	12.8	7	11	

XTV 3400 RPM E VERSION 5/8" WITH NEMA 56-C FLANGE

XTV0.5G10E-F8	0.5	1.9	1000	69	0.4	15	2.2	Z	8.5	
XTV2G15EBA-F8	2.11	8	1500	103	2	15	4.8	D	10	
XTV2G22E-F8*	2.11	8	2200	150	3	15	4.8	D	11	
XTV3G16E-F8	3	11.4	1600	110	3	15	7.2	C	10	
XTV3G22E-F8	3	11.4	2200	150	4.5	15	7.2	C	11	

PSI \leq 1740 = Oil Capacity = 8 oz
PSI \geq 1740 = Oil Capacity = 10 oz

Maximum Fluid Temperature = 140° F
Maximum Fluid Temperature = 140° F

Inlet Thread = 1/2" F
Inlet Thread = 1/2" F

Discharge Thread = 3/8" F
Discharge Thread = 3/8" F

SPECIAL KITS

2029	Viton water seals \varnothing 15
2030	Viton water seals \varnothing 18
2815	Kit for up to 180° F \varnothing 15 High Temp
2816	Kit for up to 180° F \varnothing 18 High Temp

SPECIAL NOTE: Use AR64516 Oil. First change oil after 50 hours of use. Then every 500 hours. This oil is specially formulated to provide correct lubrication properties for our pumps. **No** other oil is factory approved for these pumps.

*Available upon special request (non-stock item)

XTV - Triplex Plunger Pumps



FEATURING

MANIFOLD: High strength forged brass for long term use.

BOLTS: Six 6mm grade 12.9.

PLUNGERS: A special thick solid ceramic for long life, strong durability and more resilience.

CRANKCASE: Precision die-cast, large cooling fins and anodized for maximum heat dissipation. Sight glass, fill and drain plugs.

BEARINGS: Oversized for maximum life and load disbursement, two ball bearings. Each bearing is held in position on the crankshaft and crankcase by snap rings. This assures positive alignment and centering of the connecting rods and crankshaft in relation to the crankcase, it also eliminates the crankshaft from floating.

VALVES, SEATS, AND SPRINGS: Stainless steel with specially designed Ultra Form material valve cages that are impervious to water absorption and provide long life and positive seating.

SEALS AND V-PACKINGS: Continuously lubricating for extended life.

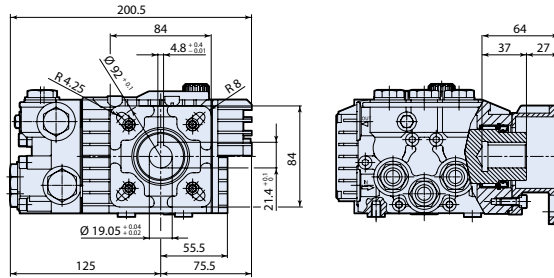
PLUNGER RODS: High strength stainless steel.

CONNECTING RODS: One piece special alloy aluminum based and bronze (+1800 PSI) oversized for maximum strength, load disbursement, and long life. Heavy pin area construction, for added load strength.

DIMENSIONS

XTV

D Version + F7
Hollow Shaft \varnothing 3/4"



XTV 3400 RPM D VERSION 3/4" WITH GAS ENGINE FLANGE

MODEL	MAX GPM	MAX L/MIN	MAX PSI	MAX BAR	POWER EBHP	BORE DIA MM	STROKE MM	CRANKSHAFT ID STAMP	WEIGHT LBS.	LIST PRICE
XTV2G15DBA-F7	2.11	8	1500	103	2	15	4.8	D	10	
XTV2G22D-F7*	2.11	8	2200	150	3	15	4.8	D	10	
XTV3G16D-F7	3	11.4	1600	110	3	15	7.2	C	10	
XTV3G22D-F7	3	11.4	2200	150	4.5	15	7.2	C	11	

PSI \leq 1740 = Oil Capacity = 8 oz
PSI \geq 1740 = Oil Capacity = 10 oz

Maximum Fluid Temperature = 140° F
Maximum Fluid Temperature = 140° F

Inlet Thread = 1/2" F
Inlet Thread = 1/2" F

Discharge Thread = 3/8" F
Discharge Thread = 3/8" F

SPECIAL KITS

2029 Viton water seals \varnothing 15
2815 Kit for up to 180° F \varnothing 15 High Temp

SPECIAL NOTE: Use AR64516 Oil. First change oil after 50 hours of use. Then every 500 hours. This oil is specially formulated to provide correct lubrication properties for our pumps. **No** other oil is factory approved for these pumps.

*Available upon special request (non-stock item)

XM / XMA - Triplex Plunger Pumps



FEATURING

MANIFOLD: High strength forged brass for long term use.

BOLTS: Eight 6mm grade 12.9.

PLUNGERS: A special thick solid ceramic for long life, strong durability and more resilience.

CRANKCASE: Precision die-cast, large cooling fins and anodized for maximum heat dissipation. Sight glass, fill and side and bottom drain plugs.

BEARINGS: Oversized for maximum life and load disbursement, needle bearing on the drive side and ball on the non-drive side. Each bearing is held in position on the crankshaft and crankcase by snap rings. This assures positive alignment and centering of the connecting rods and crankshaft in relation to the crankcase, it also eliminates the crankshaft from floating.

VALVES, SEATS, AND SPRINGS: Stainless steel with specially designed Ultra Form material valve cages that are impervious to water absorption and provide long life and positive seating.

SEALS AND V-PACKINGS: Continuously lubricating for extended life.

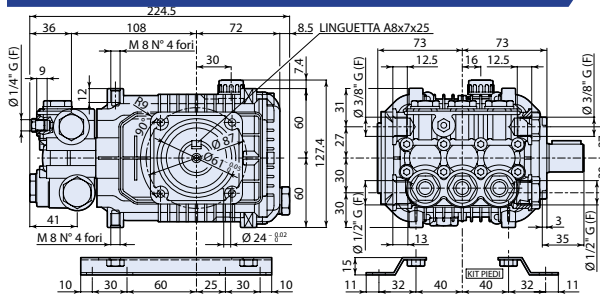
PLUNGER RODS: High strength stainless steel.

CONNECTING RODS: One piece special alloy aluminum based, oversized for maximum strength, load disbursement, and long life. Heavy pin area construction, for added load strength.

DIMENSIONS

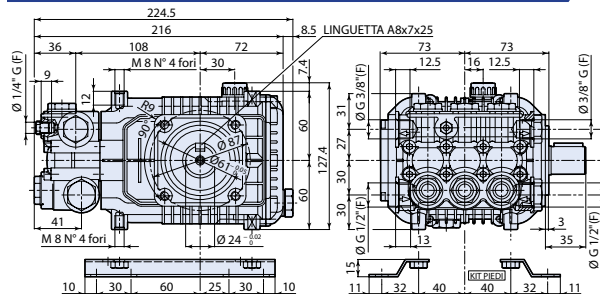
XM / XMA

N Version
Solid Shaft \varnothing 24mm



XMA

N Version
Solid Shaft \varnothing 24mm



XM 1450 RPM N VERSION 24MM SOLID SHAFT

MODEL	MAX GPM	MAX L/MIN	MAX PSI	MAX BAR	POWER EBHP	BORE DIA MM	STROKE MM	CRANKSHAFT ID STAMP	WEIGHT LBS.	LIST PRICE
XM11.17N	2.9	11	2500	170	5	15	15.4	1	14	
XM13.17N*	3.43	13	2500	170	5.5	18	12.4	4	14	
XM15.15N	3.96	15	2200	150	5.5	18	14.2	2	14	

XMA 1750 RPM N VERSION 24MM SOLID SHAFT

XMA3G25N	3	11.4	2500	170	5	15	13.2	3	14	
XMA3.5G25N	3.5	13.2	2500	170	5.5	15	15.4	1	14	
XMA4G20N	4	15.1	2000	140	5.5	18	13.2	3	14	

XMA 1750 RPM N VERSION 3/4" SOLID SHAFT

XMA3.5G22N	3.5	13.2	2200	150	5	15	15.4	1	14	
------------	-----	------	------	-----	---	----	------	---	----	--

Oil Capacity = 14.5 oz

Maximum Fluid Temperature = 140° F

Inlet Thread = 1/2" F

Discharge Thread = 3/8" F

RAIL KITS

AR 2633	1-3/4"
AR 2633H	2-5/8"

SPECIAL KITS

2776	Viton water seals \varnothing 15
2777	Viton water seals \varnothing 18

SPECIAL NOTE: Use AR64516 Oil. First change oil after 50 hours of use. Then every 500 hours. This oil is specially formulated to provide correct lubrication properties for our pumps. **No** other oil is factory approved for these pumps.

*Available upon special request (non-stock item)

XMA / XMV - Triplex Plunger Pumps



FEATURING

MANIFOLD: High strength forged brass for long term use.

BOLTS: Eight 6mm grade 12.9.

PLUNGERS: A special thick solid ceramic for long life, strong durability and more resilience.

CRANKCASE: Precision die-cast, large cooling fins and anodized for maximum heat dissipation. Sight glass, fill and side and bottom drain plugs.

BEARINGS: Oversized for maximum life and load disbursement, needle bearing on the drive side and ball on the non-drive side. Each bearing is held in position on the crankshaft and crankcase by snap rings. This assures positive alignment and centering of the connecting rods and crankshaft in relation to the crankcase, it also eliminates the crankshaft from floating.

VALVES, SEATS, AND SPRINGS: Stainless steel with specially designed Ultra Form material valve cages that are impervious to water absorption and provide long life and positive seating.

SEALS AND V-PACKINGS: Continuously lubricating for extended life.

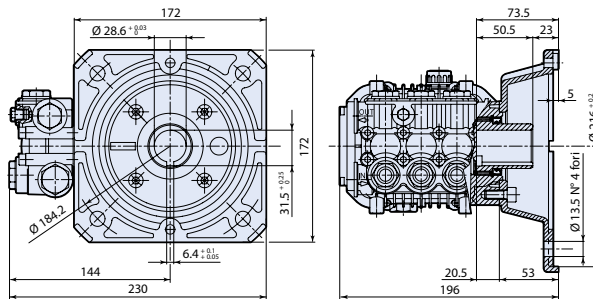
PLUNGER RODS: High strength stainless steel.

CONNECTING RODS: One piece special alloy aluminum based, oversized for maximum strength, load disbursement, and long life. Heavy pin area construction, for added load strength.

DIMENSIONS

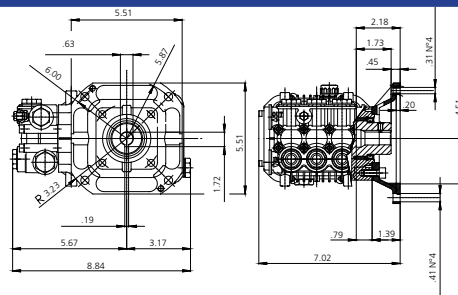
XMA

E Version + F17
Hollow Shaft \varnothing 1-1/8"



XMV

E Version + F33
Hollow Shaft \varnothing 5/8"



XMA 1750 RPM E VERSION 5/8" WITH NEMA 56-C FLANGE

MODEL	MAX GPM	MAX L/MIN	MAX PSI	MAX BAR	POWER EBHP	BORE DIA MM	STROKE MM	CRANKSHAFT ID STAMP	WEIGHT LBS.	LIST PRICE
XMA2G15E-F33	2.11	8	1500	105	2	15	9.4	7	15	
XMA2G22E-F33	2.11	8	2200	150	3	15	9.4	7	15	
XMA2.5G18E-F33	2.5	9.5	1800	120	3	15	10.6	5	15	
XMA3G18E-F33	3	11.4	1800	120	4	15	13.2	3	15	

XMA 1750 RPM E VERSION 1 1/8" WITH NEMA 182-184 FLANGE

XMA3G25E-F17	3	11.4	2500	170	5	15	13.2	3	15	
XMA3G30E-F17	3	11.4	3000	206	6.2	15	13.2	3	15	
XMA3.5G25E-F17	3.5	13.2	2500	170	5.5	15	15.4	1	15	

Oil Capacity = 14.5 oz

Maximum Fluid Temperature = 140° F

Inlet Thread = 1/2" F

Discharge Thread = 3/8" F

XMV 3400 RPM E VERSION 5/8" WITH NEMA 56-C FLANGE

XMV2G25E-F33	2.11	8	2500	172	5	15	4.8	12	15	
XMV3G25E-F33	3	11.4	2500	172	5	15	7.6	12	15	
XMV3.5G20E-F33	3.5	13	2000	138	4.8	15	8.2	8	15	

Oil Capacity = 14.6 oz

Maximum Fluid Temperature = 140° F

Inlet Thread = 1/2" F

Discharge Thread = 3/8" F

SPECIAL KITS

2776	Viton water seals \varnothing 15	\$290.56
2777	Viton water seals \varnothing 18	\$290.56
2817	Kit for up to 180° F \varnothing 15 High Temp	\$331.75

SPECIAL NOTE: Use AR64516 Oil. First change oil after 50 hours of use. Then every 500 hours. This oil is specially formulated to provide correct lubrication properties for our pumps. **No** other oil is factory approved for these pumps.

*Available upon special request (non-stock item)

XMV - Triplex Plunger Pumps



FEATURING

MANIFOLD: High strength forged brass for long term use.

BOLTS: Eight 6mm grade 12.9.

PLUNGERS: A special thick solid ceramic for long life, strong durability and more resilience.

CRANKCASE: Precision die-cast, large cooling fins and anodized for maximum heat dissipation. Sight glass, fill and side and bottom drain plugs.

BEARINGS: Oversized for maximum life and load disbursement, needle bearing on the drive side and ball on the non-drive side. Each bearing is held in position on the crankshaft and crankcase by snap rings. This assures positive alignment and centering of the connecting rods and crankshaft in relation to the crankcase, it also eliminates the crankshaft from floating.

VALVES, SEATS, AND SPRINGS: Stainless steel with specially designed Ultra Form cages provide extra long life and positive seating.

SEALS AND V-PACKINGS: Continuously lubricating for extended life.

PLUNGER RODS: High strength stainless steel.

CONNECTING RODS: One piece special alloy aluminum based, oversized for maximum strength, load disbursement, and long life. Heavy pin area construction, for added load strength.

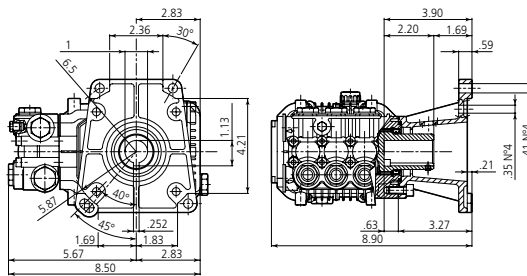
SPECIAL KITS

2776	Viton water seals ø15	\$282.10
2777	Viton water seals ø18	\$282.10
2817	Kit for up to 180° F ø15 High Temp	\$322.10

DIMENSIONS

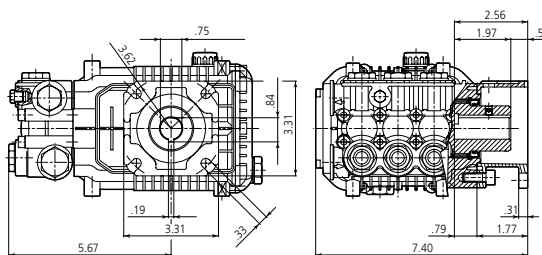
XMV

D Version + F14
Hollow Shaft ø 1"



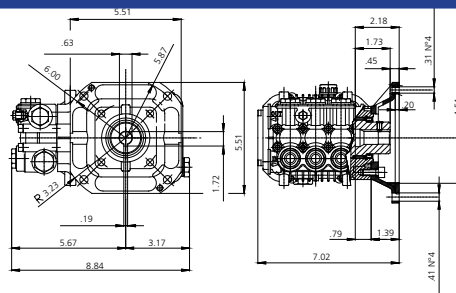
XMV

D Version + F15
Hollow Shaft ø 3/4"



XMV

D Version + F33
Hollow Shaft ø 3/4"



XMV 3400 RPM D VERSION 3/4" WITH GAS ENGINE FLANGE

MODEL	MAX GPM	MAX L/MIN	MAX PSI	MAX BAR	POWER EBHP	BORE DIA MM	STROKE MM	CRANKSHAFT ID STAMP	WEIGHT LBS.	LIST PRICE
XMV2.5G26D-F25	2.5	9.5	2600	179	5	15	6.2	10	15	
XMV3G25D-F25	3	11.4	2500	170	5	15	7.6	9	15	
XMV3G27D-F25	3	11.4	2700	186	5	15	7.6	9	15	
XMV3.5G25D-F25	3.5	13.2	2500	170	5.5	15	8.2	8	15	

XMV 3400 RPM D VERSION 1" WITH GAS ENGINE FLANGE

XMV3G30D-F24	3	11.4	3000	205	5.5	15	7.6	9	16	
XMV3G32D-F24	3	11.4	3200	220	5.5	15	7.6	9	16	
XMV3.5G25D-F24	3.5	13.2	2500	170	5.5	15	8.2	8	16	
XMV3.5G30D-F24	3.5	13.2	3000	205	7	15	8.2	8	16	
XMV4G30D-F24	4	15.1	3000	205	7.5	15	9.4	7	16	
XMV4G32D-F24	4	15.1	3200	221	10	15	9.4	7	16	

XMV 3400 RPM D VERSION 3/4" WITH NEMA 56-C FLANGE

XMV3.5G25D-F33	3.5	13.2	2500	170	5.5	15	8.2	8	15	
----------------	-----	------	------	-----	-----	----	-----	---	----	--

Oil Capacity = 14.6 oz

Maximum Fluid Temperature = 140° F

Inlet Thread = 1/2" F

Discharge Thread = 3/8" F

SPECIAL NOTE: Use AR64516 Oil. First change oil after 50 hours of use. Then every 500 hours. This oil is specially formulated to provide correct lubrication properties for our pumps. **No** other oil is factory approved for these pumps.

*Available upon special request (non-stock item)

SXMA / SXMV - Triplex Plunger Pumps



FEATURING

MANIFOLD: High strength forged brass for long term use.

BOLTS: Eight 6mm grade 12.9.

PLUNGERS: A special thick solid ceramic for long life, strong durability and more resilience.

CRANKCASE: Precision die-cast, large cooling fins and anodized for maximum heat dissipation. Sight glass, fill and side and bottom drain plugs.

BEARINGS: Oversized for maximum life and load disbursement, needle bearing on the drive side and ball on the non-drive side. Each bearing is held in position on the crankshaft and crankcase by snap rings. This assures positive alignment and centering of the connecting rods and crankshaft in relation to the crankcase, it also eliminates the crankshaft from floating.

VALVES, SEATS, AND SPRINGS: Stainless steel with specially designed Ultra Form cages provide extra long life and positive seating.

SEALS AND V-PACKINGS: Continuously lubricating for extended life.

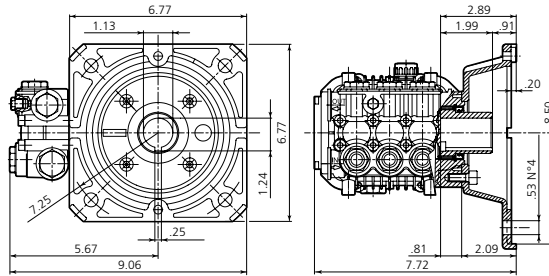
PLUNGER RODS: High strength stainless steel.

CONNECTING RODS: One piece special alloy aluminum based (SXM series has bronze rods), oversized for maximum strength, load disbursement, and long life. Heavy pin area construction, for added load strength.

DIMENSIONS

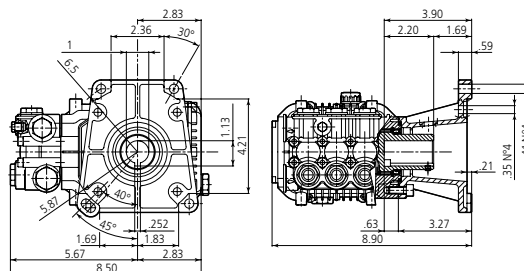
SXMA

D Version + F17
Hollow Shaft \varnothing 1-1/8"



SXMV

D Version + F14
Hollow Shaft \varnothing 1"



SXMA 1750 RPM E VERSION 1 1/8" WITH NEMA 182-184 FLANGE

MODEL	MAX GPM	MAX L/MIN	MAX PSI	MAX BAR	POWER EBHP	BORE DIA MM	STROKE MM	CRANKSHAFT ID STAMP	WEIGHT LBS.	LIST PRICE
SXMA3G35E-F17	3	11.4	3500	240	7	15	13.2	3	18	
SXMA3.5G30E-F17*	3.5	13.2	3000	205	7	15	15.4	1	18	
SXMA4G30E-F17	4	15.1	3000	205	7.5	18	13.2	3	18	

SXMV 3400 RPM D VERSION 1" WITH GAS ENGINE FLANGE

SXMV3G40D-F24	3	11.4	4000	275	7.5	15	7.6	9	16	
SXMV3.5G35D-F24	3.5	13.2	3500	240	8.4	15	8.2	8	16	
SXMV3.5G40D-F24	3.5	13.2	4000	275	8.5	15	8.2	8	16	
SXMV4G40D-F24	4	15.1	4000	275	12	15	9.4	7	16	

Oil Capacity = 14.6 oz

Maximum Fluid Temperature = 140° F

Inlet Thread = 1/2" F

Discharge Thread = 3/8" F

SPECIAL KITS

2776	Viton water seals \varnothing 15
2777	Viton water seals \varnothing 18
42212	Kit for up to 180° F \varnothing 15 High Temp

SPECIAL NOTE: Use AR64516 Oil. First change oil after 50 hours of use. Then every 500 hours. This oil is specially formulated to provide correct lubrication properties for our pumps. **No** other oil is factory approved for these pumps.

*Available upon special request (non-stock item)

RKA / RKV - Triplex Plunger Pumps



FEATURING

MANIFOLD: High strength forged brass or nickel plated for long term use.

BOLTS: Eight 8mm grade 8.8.

PLUNGERS: A special thick solid ceramic for long life, strong durability and more resilience.

CRANKCASE: Precision die-cast, large cooling fins and anodized for maximum heat dissipation. Sight glass, fill and side and bottom drain plugs.

BEARINGS: Oversized tapered roller bearing for maximum life and load disbursement.

BEARING SUPPORT: Precision die-cast and machined to assure concentricity and alignment.

VALVES, SEATS, AND SPRINGS: Stainless steel with specially designed Ultra Form cages to provide long life and positive seating.

SEALS AND V-PACKINGS: Continuously lubricating for extended life.

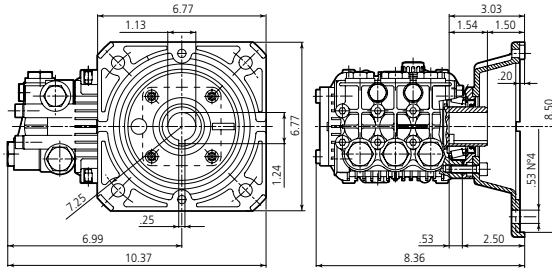
PLUNGER RODS: Stainless steel construction for strength, no plating to scrape off, back-up and o-ring plunger sealing system.

CONNECTING RODS: One piece special alloy aluminum or bronze for higher pressure, oversized for maximum strength, load disbursement, and long life. Heavy pin area construction, for added load strength.

DIMENSIONS

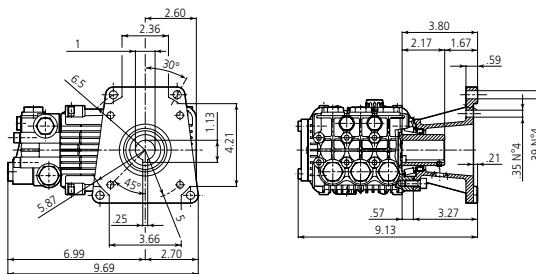
RKA

D Version + F17
Hollow Shaft \varnothing 1-1/8"



RKV

D Version + F14
Hollow Shaft \varnothing 1"



RKA 1750 RPM E VERSION 1 1/8" WITH NEMA 182-184 FLANGE

MODEL	MAX GPM	MAX L/MIN	MAX PSI	MAX BAR	POWER EBHP	BORE DIA MM	STROKE MM	CRANKSHAFT ID STAMP	WEIGHT LBS.	LIST PRICE
RKA3.5G30E-F17	3.5	13.2	3000	205	7.5	18	10.8	5	21	
RKA3.5G40HE-F17	3.5	13.2	4000	275	9.6	18	10.8	5	21	
RKA4G20E-F17	4	15.1	2000	140	5	18	12	4	21	
RKA4G30E-F17	4	15.1	3000	205	7.5	18	12	4	21	
RKA4G30HE-F17	4	15.1	3000	205	7.5	18	12	4	21	
RKA4.8G30E-F17	4.8	18.2	3000	205	10	20	12	4	21	
RKA5.5G13E-F17	5.5	20.8	2000	138	7.5	20	13.8	2	21	
RKA7G20HE-F17	7.1	27	2000	138	10	22	14.6	1	21	

RKV 3400 RPM D VERSION 1" WITH GAS ENGINE FLANGE

RKV3.5G30AD-F24	3.5	13.2	3000	205	7.5	18	6.2	9	21	
RKV3.5G35D-F24	3.5	13.2	3500	240	8.4	18	6.2	9	21	
RKV3.5G40HD-F24	3.5	13.2	4000	275	10	18	6.2	9	21	
RKV4G30AD-F24	4	15.1	3000	205	7.5	18	7	8	21	
RKV4G32D-F24	4	15.1	3200	220	7.5	18	7	8	21	
RKV4G35HD-F24	4	15.1	3500	240	7.5	18	7	8	21	
RKV4G37D-F24	4	15.1	3700	255	7.5	18	7	8	21	
RKV4G40HD-F24	4	15.1	4000	275	11	18	7	8	21	
RKV4.5G32D-F24	4.5	17	3200	220	12	18	8	8	21	
RKV4.5G40HD-F24	4.5	17	4000	275	12	18	8	7	21	
RKV5G40HD-F24	5	18.3	4000	275	13.7	18	8.6	11	21	
RKV5.5G40HD-F24	5.5	20.8	4000	275	15	18	9.8	6	21	

Oil Capacity = 15 oz

Maximum Fluid Temperature = 140° F

Inlet Thread = 1/2" F

Discharge Thread = 3/8" F

SPECIAL KITS

2809	Viton water seals \varnothing 18
2810	Viton water seals \varnothing 20
2811	Viton water seals \varnothing 22
42213	Kit for up to 180° F \varnothing 18 High Temp
2820	Kit for up to 180° F \varnothing 20 High Temp

SPECIAL NOTE: Use AR64516 Oil. First change oil after 50 hours of use. Then every 500 hours. This oil is specially formulated to provide correct lubrication properties for our pumps. **No** other oil is factory approved for these pumps.

*Available upon special request (non-stock item)

GRKV - Triplex Plunger Pumps



FEATURING

MANIFOLD: High strength forged brass for long term use.

BOLTS: Eight 10mm grade 8.8.

PLUNGERS: A special thick solid ceramic for long life, strong durability and more resilience.

CRANKCASE: Precision die-cast, large cooling fins and anodized for maximum heat dissipation. Sight glass, fill and side and bottom drain plugs.

BEARINGS: Oversized tapered roller bearing for maximum life and load disbursement.

BEARING SUPPORT: Precision die-cast and machined to assure concentricity and alignment.

VALVES, SEATS, AND SPRINGS: Stainless steel with specially designed Ultra Form cages to provide extra long life and positive seating.

SEALS AND V-PACKINGS: Continuously lubricating for extended life.

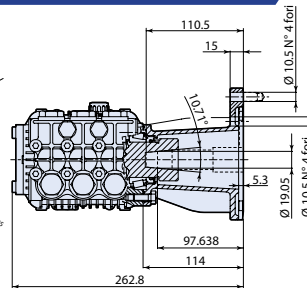
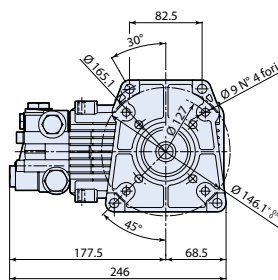
PLUNGER RODS: Stainless steel construction for strength, no plating to scrape off, back-up and o-ring plunger sealing system.

CONNECTING RODS: One piece special alloy aluminum or bronze for higher pressure, oversized for maximum strength, load disbursement, and long life. Heavy pin area construction, for added load strength.

DIMENSIONS

GRKV

V Version + F35
Hollow Shaft \varnothing 1"



MOUNTING HARDWARE
AR2504

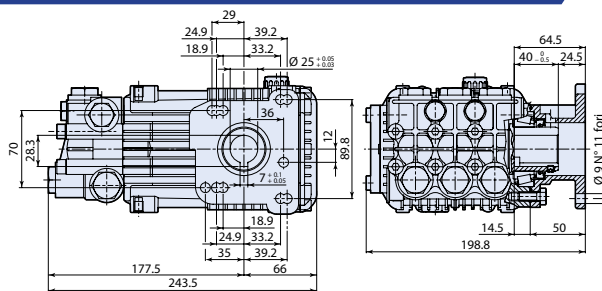
**PATENTED TAPERED HOLLOW SHAFT
FOR COUPLING TO TAPERED SHAFT ENGINES**

GRKV 3400 RPM V VERSION 1" WITH TAPERED GAS ENGINE FLANGE

MODEL	MAX GPM	MAX L/MIN	MAX PSI	MAX BAR	POWER EBHP	BORE DIA MM	STROKE MM	CRANKSHAFT ID STAMP	WEIGHT LBS.	LIST PRICE
GRKV4G35HV-F35	4	15.1	3500	240	9.5	18	7	8	23	
Oil Capacity = 15 oz		Maximum Fluid Temperature = 140° F			Inlet Thread = 1/2" F		Discharge Thread = 3/8" F			

RKA

J Version
Solid Shaft \varnothing 25mm



RKA 1750 RPM J VERSION 25MM SHAFT FOR ENGINE WITH INTERNAL GEAR BOX

MODEL	MAX GPM	MAX L/MIN	MAX PSI	MAX BAR	POWER EBHP	BORE DIA MM	STROKE MM	CRANKSHAFT ID STAMP	WEIGHT LBS.	LIST PRICE
RKA4G40HJ-F22	4	15.1	4000	275	11	18	12	4	20	
Oil Capacity = 15 oz		Maximum Fluid Temperature = 140° F			Inlet Thread = 1/2" F		Discharge Thread = 3/8" F			

SPECIAL NOTE: Use AR64516 Oil. First change oil after 50 hours of use. Then every 500 hours. This oil is specially formulated to provide correct lubrication properties for our pumps. **No** other oil is factory approved for these pumps.

*Available upon special request (non-stock item)

RW - Triplex Plunger Pump



FEATURING

MANIFOLD: Forged Brass for strength and no porosity and long life. Higher hydrostatic pressures for safety and performance.

BOLTS: Eight 10mm grade 8.8.

PLUNGERS: Are a special aluminum oxide blend, solid ceramic for long life, strong durability and more resilient. Ultra thick with SST retaining bolt.

CRANKCASE: Precision die-cast, large cross head for strength, large cooling fins and anodized (for maximum heat dissipation).

BEARINGS: Oversized for maximum life and load disbursement.

VALVES, SEATS, AND SPRINGS: Stainless steel with specially designed Ultra Form cages to provide long life and positive seating.

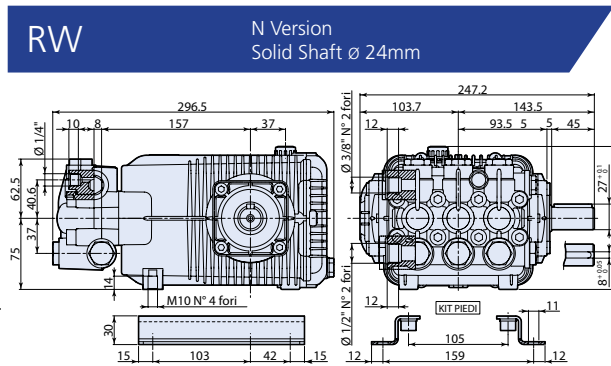
SEALS AND PACKINGS: High pressure packings "V" style (D-1) and lowpressure seals "Special profile" style (W-2) Buna-N (cotton duct weave base) strong and tightens under load. Top support ring.

OIL SEALS: All are constructed of Buna-N rubber

PLUNGER RODS: Stainless steel construction for strength (no plating to scrape off), back-up and O-ring plunger sealing system.

CONNECTING RODS: Heavy 1-piece special alloy aluminum based, oversized for maximum strength, load disbursement, and life. Heavy pin area construction, for added load strength.

DIMENSIONS



RW 1450 RPM N VERSION 24MM SOLID SHAFT

MODEL	MAX GPM	MAX L/MIN	MAX PSI	MAX BAR	POWER EBHP	BORE DIA MM	STROKE MM	CRANKSHAFT ID STAMP	WEIGHT LBS.	LIST PRICE
RW15	4	15	3500	241	9.6	18	14.6	3	31	
RW21	5.5	21	3500	241	13.2	18	19.8	1	31	

RW 1750 RPM N VERSION 24MM SOLID SHAFT

RW15	4.8	18	3500	241	9.6	18	14.6	3	31	
------	-----	----	------	-----	-----	----	------	---	----	--

Oil Capacity = 32 oz

Maximum Fluid Temperature = 140° F

Inlet Thread = 1/2" F

Discharge Thread = 3/8" F

RAIL KITS

AR 2748	1-1/4"
U-BRACKET	1-1/4"

SPECIAL NOTE: Use AR64516 Oil. First change oil after 50 hours of use. Then every 500 hours. This oil is specially formulated to provide correct lubrication properties for our pumps. **No** other oil is factory approved for these pumps.

*Available upon special request (non-stock item)

XW - Triplex Plunger Pumps



FEATURING

MANIFOLD: High strength forged brass for long term use.

BOLTS: Eight 10mm grade 8.8.

PLUNGERS: A special thick solid ceramic for long life, strong durability and more resilience.

CRANKCASE: Precision die-cast, large cooling fins and anodized for maximum heat dissipation. Bayonet style sight glass located in the rear and side cover, fill and side and bottom drain plugs.

BEARINGS: Oversized premium tapered roller bearing for maximum life and load disbursement.

BEARING SUPPORT: Precision die-cast and machined to assure concentricity, alignment and strength.

VALVES, SEATS, AND SPRINGS: Stainless steel with specially designed Ultra Form cages to provide long life and positive seating.

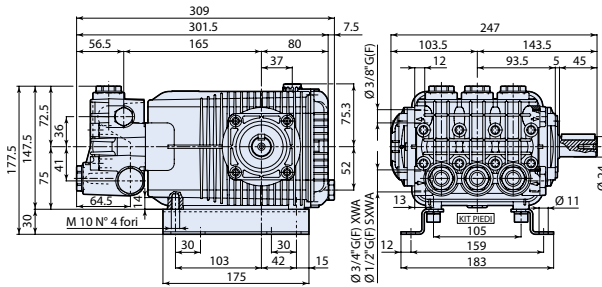
SEALS AND U-PACKING: Continuously lubricating for extended life. Triple lip oil seal for assured crankcase seal.

PLUNGER RODS: High strength stainless steel, for heavy duty use.

CONNECTING RODS: Two-piece special alloy aluminum based material, oversized for maximum strength, load disbursement, and long life. Heavy pin area construction, for added load strength.

DIMENSIONS

XW / XWA N Version Solid Shaft ø 24mm



PATENTED VALVE CAP DESIGN.

*XW-M & XWA-M series pumps features new plunger and packing system.

XW 1450 RPM N VERSION 24MM SOLID SHAFT

MODEL	MAX GPM	MAX L/MIN	MAX PSI	MAX BAR	POWER EBHP	BORE DIA MM	STROKE MM	CRANKSHAFT ID STAMP	WEIGHT LBS.	LIST PRICE
XW-M1530N	4	15	4350	300	12	20	12.2	5	34	
XW-M21.28N	5.55	21	4060	280	15	20	16.6	3	34	
XW-M26.23N	6.87	26	3600	250	12.5	20	19.8	1	34	
XW30.25N	7.92	30	3600	250	19	22	19.8	1	34	

XWA 1750 RPM N VERSION 24MM SOLID SHAFT

XWA-M4G40N	4	15	4000	275	11	20	13.8	6	34	
XWA-M5.5G40N	5.5	21	4000	275	14	20	13.8	4	34	
XWA-M7G40N	7	25.5	4000	275	17	20	17.2	2	34	
XWA-M8G35N	8	30	3500	240	18	20	19.8	1	34	
XWA9G30N*	9	34	3000	200	18.5	22	19.8	1	34	

Oil Capacity = 32 oz

Maximum Fluid Temperature = 140° F

Inlet Thread = 3/4" F

Discharge Thread = 3/8" F

RAIL KITS

AR 2748 1-1/4"
U-BRACKET 1-1/4"

SPECIAL KITS

8772 Viton water seals ø20
2779 Viton water seals ø22

SPECIAL NOTE: Use AR64516 Oil. First change oil after 50 hours of use. Then every 500 hours. This oil is specially formulated to provide correct lubrication properties for our pumps. **No** other oil is factory approved for these pumps.

*Available upon special request (non-stock item)

XWT / XWF / XWL / XWLA - Triplex Plunger Pumps

FEATURING

MANIFOLD: High strength forged brass for long term use.

BOLTS: Eight 10mm grade 8.8.

PLUNGERS: A special thick solid ceramic for long life, strong durability and more resilience.

CRANKCASE: Precision die-cast, large cooling fins and anodized for maximum heat dissipation. Bayonet style sight glass located in the rear and side cover, fill and side and bottom drain plugs.

BEARINGS: Oversized premium tapered roller bearing for maximum life and load disbursement.

BEARING SUPPORT: Precision die-cast and machined to assure concentricity, alignment and strength.

VALVES, SEATS, AND SPRINGS: Stainless steel with specially designed Ultra Form cages to provide long life and positive seating.

SEALS AND U-PACKING: Continuously lubricating for extended life. Triple lip oil seal for assured crankcase seal.

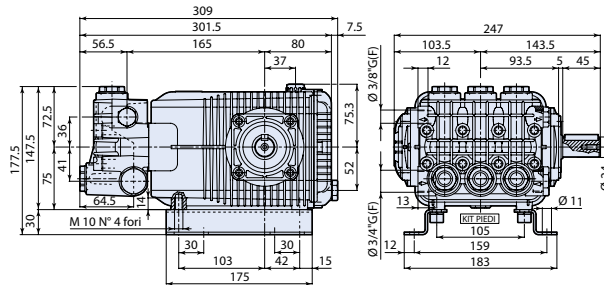
PLUNGER RODS: High strength stainless steel, for heavy duty use.

CONNECTING RODS: Two-piece special alloy aluminum based material, oversized for maximum strength, load disbursement, and long life. Heavy pin area construction, for added load strength.

DIMENSIONS

XWT/XWF/XWL/XWLA

N Version
Solid Shaft ϕ 24mm



PATENTED
VALVE CAP
DESIGN.

XWT 500 RPM N VERSION 24MM SOLID SHAFT

MODEL	MAX GPM	MAX L/MIN	MAX PSI	MAX BAR	POWER EBHP	BORE DIA MM	STROKE MM	CRANKSHAFT ID STAMP	WEIGHT LBS.	LIST PRICE
XWT21.20N	5.55	21	2900	200	11	28	19.8	1	34	

XWF 1000 RPM N VERSION 24MM SOLID SHAFT

XWF26.20N	6.87	26	2900	200	13	28	15	8	34	
XWF30.20N	7.92	30	2900	200	15	28	17.2	2	34	
XWF36.17N	9.51	36	2500	170	15	28	19.8	1	34	

XWL 1450 RPM N VERSION 24MM SOLID SHAFT

XWL41.20N*	10.8	41	3000	200	22.2	28	17.2	2	34	
XWL42.15N	11.09	42	2200	150	16	28	17.2	2	34	

XWLA 1750 RPM N VERSION 24MM SOLID SHAFT

XWLA13G15N	13	49	1450	100	13	28	17.2	2	34	
------------	----	----	------	-----	----	----	------	---	----	--

Oil Capacity = 32 oz

Maximum Fluid Temperature = 140° F

Inlet Thread = 3/4" F

Discharge Thread = 3/8" F

*Bronze Rods

RAIL KITS

AR 2748	1-1/4"
U-BRACKET	1-1/4"

SPECIAL NOTE: Use AR64516 Oil. First change oil after 50 hours of use. Then every 500 hours. This oil is specially formulated to provide correct lubrication properties for our pumps. **No** other oil is factory approved for these pumps.

*Available upon special request (non-stock item)

SXW / SXWA - Triplex Plunger Pumps



FEATURING

MANIFOLD: High strength forged brass for long term use.

BOLTS: Eight 10mm grade 8.8.

PLUNGERS: A special thick solid ceramic for long life, strong durability and more resilience.

CRANKCASE: Precision die-cast, large cooling fins and anodized for maximum heat dissipation. Bayonet style sight glass located in the rear and side cover, fill and side and bottom drain plugs.

BEARINGS: Oversized premium tapered roller bearing for maximum life and load disbursement.

BEARING SUPPORT: Precision die-cast and machined to assure concentricity, alignment and strength.

VALVES, SEATS, AND SPRINGS: Stainless steel with specially designed Ultra Form cages to provide long life and positive seating.

SEALS AND U-PACKING: Continuously lubricating for extended life. Triple lip oil seal for assured crankcase seal.

PLUNGER RODS: High strength stainless steel, for heavy duty use.

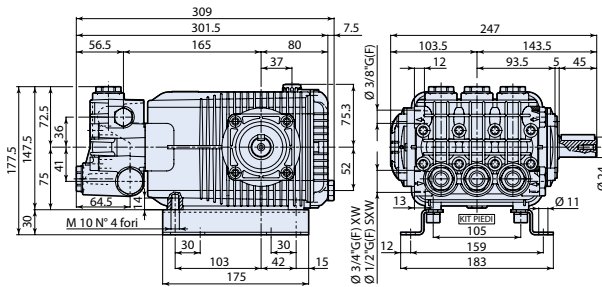
CONNECTING RODS: Two-piece special alloy aluminum based material, oversized for maximum strength, load disbursement, and long life. Heavy pin area construction, for added load strength.

**PATENTED
VALVE CAP
DESIGN.**

DIMENSIONS

SXW / SXWA

N Version
Solid Shaft \varnothing 24mm



SXW 1450 RPM N VERSION 24MM SOLID SHAFT

MODEL	MAX GPM	MAX L/MIN	MAX PSI	MAX BAR	POWER EBHP	BORE DIA MM	STROKE MM	CRANKSHAFT ID STAMP	WEIGHT LBS.	LIST PRICE
SXW15.35	3.96	15	5100	350	15	18	15	8	35	
SXW21.35	5.55	21	5100	350	20	18	21	7	35	

SXWA 1750 RPM N VERSION 24MM SOLID SHAFT

SXWA4G50	4	15.1	5000	345	13	18	12.2	5	35	
SXWA5.5G50	5.5	20.8	5000	345	17	18	17.2	2	35	
SXWA7G50	7	26.5	5000	345	24	18	21	7	35	

Oil Capacity = 32 oz

Maximum Fluid Temperature = 140° F

Inlet Thread = 1/2" F

Discharge Thread = 3/8" F

RAIL KITS

AR 2748 1-1/4"
U-BRACKET 1-1/4"

SPECIAL NOTE: Use AR64516 Oil. First change oil after 50 hours of use. Then every 500 hours. This oil is specially formulated to provide correct lubrication properties for our pumps. **No** other oil is factory approved for these pumps.

*Available upon special request (non-stock item)

SHP - Triplex Plunger Pump



FEATURING

MANIFOLD: New high efficiency design concept. (Patented). Forged brass for strength and no porosity for long life and higher hydrostatic pressures.

BOLTS: Eight 10mm grade 8.8.

PLUNGERS: A special aluminum oxide blend, solid ceramic for long life, strong durability and more resilient. Ultra thick with SST retaining bolt.

CRANKCASE: Precision die-cast, large cross head for strength, large cooling fins and anodized for maximum heat dissipation.

BEARINGS: Oversized "SKF" taper for maximum life and load disbursement.

VALVES, SEATS, AND SPRINGS: Stainless steel with specially designed Ultra Form cages to provide long life and positive seating.

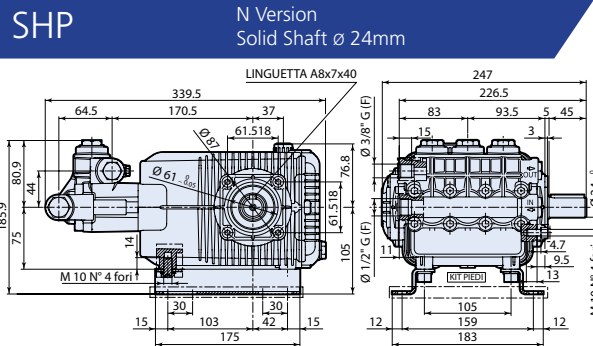
SEALS AND PACKINGS: "Special profile" style (W-1 & W-2) Buna-N (cotton duct weave base) strong and tightens under load. Top support ring.

OIL SEALS: All are constructed of Buna-N rubber.

PLUNGER RODS: Stainless steel construction for strength (no plating to scrape off), bolt type retainer with a special plunger sealing system.

CONNECTING RODS: Heavy 2-piece special allow aluminum based, oversized for maximum strength, load disbursement, and life. Heavy pin area construction, for added load strength.

DIMENSIONS



PUMP HEAD DESIGN PATENTED

SHP 1450 RPM N VERSION 24MM SOLID SHAFT

MODEL	MAX GPM	MAX L/MIN	MAX PSI	MAX BAR	POWER EBHP	BORE DIA MM	STROKE MM	CRANKSHAFT ID STAMP	WEIGHT LBS.	LIST PRICE
SHP15.50N	3.96	15	7250	500	20	18	15	8	29	
SHP22.50N	5.8	22	7250	500	27	18	21	7	29	

Oil Capacity = 32 oz

Maximum Fluid Temperature = 140° F

Inlet Thread = 1/2" F

Discharge Thread = 3/8" F

SPECIAL NOTE: Use AR64516 Oil. First change oil after 50 hours of use. Then every 500 hours. This oil is specially formulated to provide correct lubrication properties for our pumps. **No** other oil is factory approved for these pumps.

*Available upon special request (non-stock item)

RTP / RTF / RTJ - Triplex Plunger Pumps



FEATURING

MANIFOLD: Forged Brass strength and no porosity for long life. Higher hydrostatic pressures for safety and performance.

BOLTS: Eight bolts, 12mm, grade 8.8

PLUNGERS: Special aluminum oxide blend, solid ceramic for long life, strong durability and more resilient tungsten coated stainless steel.

CRANKCASE: Precision die-cast, large cross head for strength, large cooling fins.

BEARINGS: Oversized for maximum life and load disbursement.

VALVES, SEATS, AND SPRINGS: Ultra form cages, durable, strength and long life. 303 and 400 series stainless steel. Machined valve caps..

SEALS AND V-PACKINGS: "V" style chevron style seal with a rear support seal. W-2 style low pressure seal with a support rod ting, Buna-N for a good positive seat.

OIL SEALS: Are constructed of Buna-N rubber. O-rings have stainless steel garder springs to assure constant tension on the sealing surface.

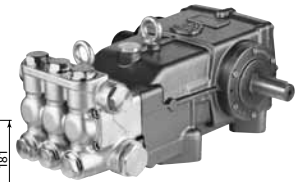
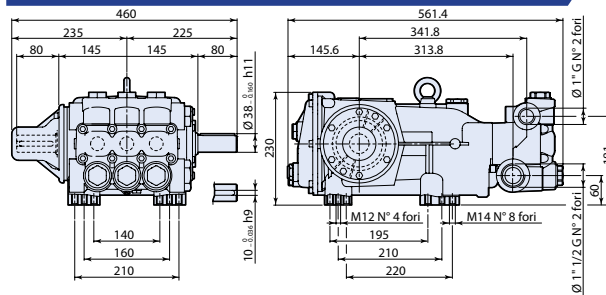
PLUNGER RODS: Stainless steel construction for strength.

CONNECTING RODS: Heavy two piece bronze, oversized for maximum strength, load disbursement and life. Heavy pin area construction for added load strength.

DIMENSIONS

RTF / RTJ

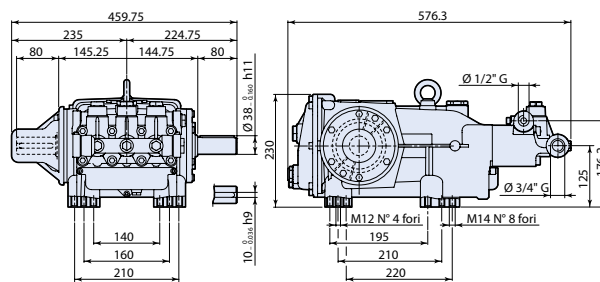
N Version
Solid Shaft \varnothing 35mm



RTF / RTJ

RTP

N Version
Solid Shaft \varnothing 35mm



RTP

RTP 1000 RPM N VERSION 35MM SOLID SHAFT

MODEL	MAX GPM	MAX L/MIN	MAX PSI	MAX BAR	POWER EBHP	BORE DIA MM	STROKE MM	CRANKSHAFT ID STAMP	WEIGHT LBS.	LIST PRICE
RTP30N	7.9	30	7250	500	39.3	20	34	2	177	
RTP38N	10	38	7250	500	49.8	20	42	1	177	

Oil Capacity = 137 oz

Maximum Fluid Temperature = 140° F

Inlet Thread = 3/4" F

Discharge Thread = 1/2" F

*Recommend FT783112 Inlet King Nipple

RTF 800 RPM N VERSION 35MM SOLID SHAFT

RTF135N	36	135	1500	103	27.6	40	48	3	192	
---------	----	-----	------	-----	------	----	----	---	-----	--

RTJ 1000 RPM N VERSION 35MM SOLID SHAFT

RTJ70	18.5	70	4000	275	50.8	25	48	3	198	
-------	------	----	------	-----	------	----	----	---	-----	--

Oil Capacity = 137 oz

Maximum Fluid Temperature = 140° F

Inlet Thread = 1-1/2" F

Discharge Thread = 1" F

*Available upon special request (non-stock item)

RKA-SS Stainless Steel Pumps



FEATURING

MANIFOLD: High strength 316L Stainless Steel to insure long term use.

BOLTS: 304L stainless steel.

PLUNGERS: A special ultra thick solid ceramic for long life, strong durability and more resilience.

CRANKCASE: Precision die-cast, large cooling fins and special anticorrosion finish. Both side and rear cover sight glass.

BEARINGS: Premium SKF tapered roller bearings that provide extra load support, smoother and lower crankcase running temperatures and overall extended pump life.

VALVES, SEATS, AND SPRINGS: Stainless steel with specially designed cages to provide positive seating and extended valve life.

SEALS AND V-PACKINGS: Viton are continuously lubricating for extended life. SPL plunger retainers.

OIL SEALS: Triple lipped and spring loaded for greater durability and extended life.

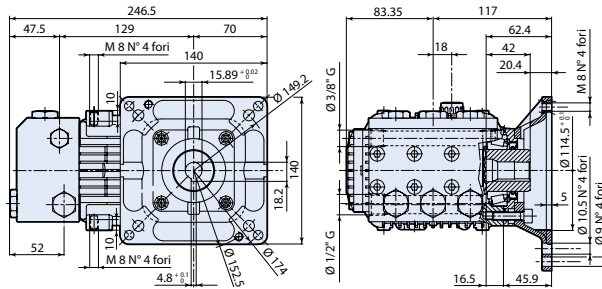
PLUNGER RODS: High strength stainless steel.

CONNECTING RODS: One piece special alloy bronze for higher pressures, oversized for maximum strength, load disbursement, and long life. Heavy pin area construction.

DIMENSIONS

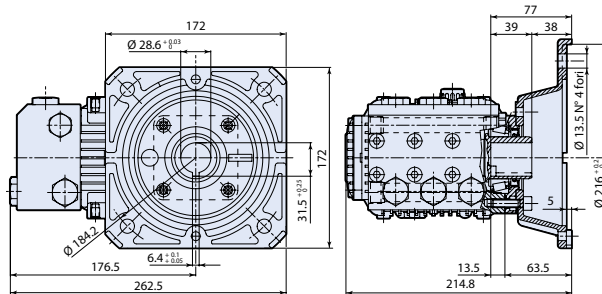
RKA-SS

E Version + F33
Hollow Shaft \varnothing 5/8"



RKA-SS

E Version + F17
Solid Shaft \varnothing 1-1/8"



RKA-SS 1750 RPM E VERSION 5/8" WITH NEMA 56-C FLANGE

MODEL	MAX GPM	MAX L/MIN	MAX PSI	MAX BAR	POWER EBHP	BORE DIA MM	STROKE MM	CRANKSHAFT ID STAMP	WEIGHT LBS.	LIST PRICE
RKA-SS2.3G15E-F33	2.3	8.7	3000	200	4.7	18	7	8	22	
RKA-SS3G15E-F33	3	11.4	3000	200	6.2	18	9.8	6	22	
RKA-SS3.6G12E-F33	3.6	13.6	3000	200	7.4	18	11.2	10	22	
RKA-SS4.2G15E-F33	4.2	15.9	3000	200	8.6	18	12	4	22	

RKA-SS 1750 RPM E VERSION 1 1/8" WITH NEMA 182-184 FLANGE

RKA-SS2.3G15E-F17	2.3	8.7	3000	200	4.7	18	7	8	22	
RKA-SS3G15E-F17	3	11.4	3000	200	6.2	18	9.8	6	22	
RKA-SS3.6G12E-F17	3.6	13.6	3000	200	7.4	18	11.2	10	22	
RKA-SS4.2G15E-F17	4.2	15.9	3000	200	8.6	18	12	4	22	

Oil Capacity = 15 oz

Maximum Fluid Temperature = 140° F

Inlet Thread = 1/2" F

Discharge Thread = 3/8" F

SPECIAL NOTE: Use AR64516 Oil. First change oil after 50 hours of use. Then every 500 hours. This oil is specially formulated to provide correct lubrication properties for our pumps. **No** other oil is factory approved for these pumps.

*Available upon special request (non-stock item)

RK-SS / RKA-SS Stainless Steel Pumps



FEATURING

MANIFOLD: High strength 316L Stainless Steel to insure long term use.

BOLTS: 304L stainless steel.

PLUNGERS: A special ultra thick solid ceramic for long life, strong durability and more resilience.

CRANKCASE: Precision die-cast, large cooling fins and special anticorrosion finish. Both side and rear cover sight glass.

BEARINGS: Premium SKF tapered roller bearings that provide extra load support, smoother and lower crankcase running temperatures and overall extended pump life.

VALVES, SEATS, AND SPRINGS: Stainless steel with specially designed cages to provide positive seating and extended valve life.

SEALS AND V-PACKINGS: Viton are continuously lubricating for extended life. SPL plunger retainers.

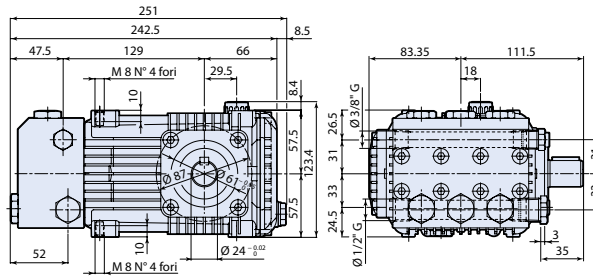
OIL SEALS: Triple lipped and spring loaded for greater durability and extended life.

PLUNGER RODS: High strength stainless steel.

CONNECTING RODS: One piece special alloy bronze for higher pressures, oversized for maximum strength, load disbursement, and long life. Heavy pin area construction.

DIMENSIONS

RK-SS / RKA-SS N Version
Solid Shaft \varnothing 24mm



RK-SS 1450 RPM N VERSION 24MM SOLID SHAFT

MODEL	MAX GPM	MAX L/MIN	MAX PSI	MAX BAR	POWER EBHP	BORE DIA MM	STROKE MM	CRANKSHAFT ID STAMP	WEIGHT LBS.	LIST PRICE
RK-SS11.11N	2.9	11	3000	200	6	18	10.8	5	22	
RK-SS13.17N	3.43	13	3000	200	7.1	18	12.8	3	22	
RK-SS15.15N	3.96	15	3000	200	8.1	18	14.6	1	22	

RKA-SS 1750 RPM N VERSION 24MM SOLID SHAFT

RKA-SS2.3G15N*	2.3	8.7	3000	200	4.7	18	7	8	22	
RKA-SS3G15N*	3	11.4	3000	200	6.2	18	9.8	6	22	
RKA-SS3.6G12N*	3.6	13.6	3000	200	7.4	18	11.2	10	22	
RKA-SS4.2G15N*	4.2	15.9	3000	200	8.6	18	12	4	22	

Oil Capacity = 15 oz

Maximum Fluid Temperature = 140° F

Inlet Thread = 1/2" F

Discharge Thread = 3/8" F

RAIL KITS

AR 1837	5/8"
AR 2633	1-3/4"
AR 2633H	2-5/8"

SPECIAL NOTE: Use AR64516 Oil. First change oil after 50 hours of use. Then every 500 hours. This oil is specially formulated to provide correct lubrication properties for our pumps. **No** other oil is factory approved for these pumps.

*Available upon special request (non-stock item)

XWL-SS Stainless Steel Pumps



FEATURING

MANIFOLD: High strength 316L Stainless Steel to insure long term use.

BOLTS: 304L stainless steel.

PLUNGERS: A special ultra thick solid ceramic for long life, strong durability and more resilience.

CRANKCASE: Precision die-cast, large cooling fins and special anticorrosion finish. Both side and rear cover sight glass.

BEARINGS: Premium SKF tapered roller bearings that provide extra load support, smoother and lower crankcase running temperatures and overall extended pump life.

VALVES, SEATS, AND SPRINGS: Stainless steel with specially designed cages to provide positive seating and extended valve life.

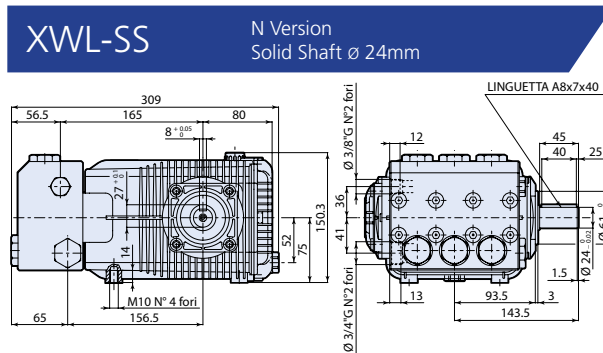
SEALS AND V-PACKINGS: Viton are continuously lubricating for extended life. SPL plunger retainers.

OIL SEALS: Triple lipped and spring loaded for greater durability and extended life.

PLUNGER RODS: High strength stainless steel.

CONNECTING RODS: One piece special alloy bronze for higher pressures, oversized for maximum strength, load disbursement, and long life. Heavy pin area construction.

DIMENSIONS



XWL-SS 1450 RPM N VERSION 24MM SOLID SHAFT

MODEL	MAX GPM	MAX L/MIN	MAX PSI	MAX BAR	POWER EBHP	BORE DIA MM	STROKE MM	CRANKSHAFT ID STAMP	WEIGHT LBS.	LIST PRICE
XWL-SS42.15N	11	42	2200	150	15	28	17.2	2	36	
XWL-SS12G22N	10	38	2200	150	14	28	15	8	36	

XWLA-SS 1750 RPM N VERSION 24MM SOLID SHAFT

MODEL	MAX GPM	MAX L/MIN	MAX PSI	MAX BAR	POWER EBHP	BORE DIA MM	STROKE MM	CRANKSHAFT ID STAMP	WEIGHT LBS.	LIST PRICE
XWLA-SS12G22N	12	45	2200	150	17.5	28	15	8	36	

Oil Capacity = 32 oz

Maximum Fluid Temperature = 160° F

Inlet Thread = 3/4" F

Discharge Thread = 3/8" F

RAIL KITS

AR 1837	5/8"
AR 2633	1-3/4"
AR 2633H	2-5/8"

SPECIAL NOTE: Use AR64516 Oil. First change oil after 50 hours of use. Then every 500 hours. This oil is specially formulated to provide correct lubrication properties for our pumps. **No** other oil is factory approved for these pumps.

*Available upon special request (non-stock item)

Hot Water 185°F Pumps



FEATURING

MANIFOLD: Nickel plated.

BOLTS: Stainless steel eight 6mm grade 12.9.

PLUNGERS: A special thick solid ceramic for long life, strong durability and more resilience.

CRANKCASE: Precision die-cast, large cooling fins and anodized for maximum heat dissipation. Sight glass, fill and side and bottom drain plugs. Special anti-corrosion finish

BEARINGS: Oversized for maximum life and load disbursement, needle bearing on the drive side and ball on the non-drive side. Each bearing is held in position on the crankshaft and crankcase by snap rings. This assures positive alignment and centering of the connecting rods and crankshaft in relation to the crankcase, it also eliminates the crankshaft from floating.

VALVES, SEATS, AND SPRINGS: Stainless steel with specially designed Ultra Form material valve cages that are impervious to water absorption and provide long life and positive seating.

SEALS AND V-PACKINGS: High temperature machined material. Continuously lubricating for extended life.

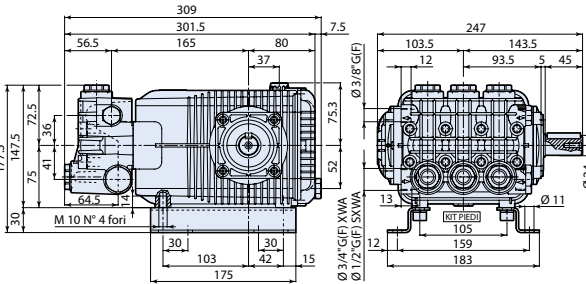
PLUNGER RODS: High strength stainless steel.

CONNECTING RODS: One piece bronze special alloy aluminum based, oversized for maximum strength, load disbursement, and long life. Heavy pin area construction, for added load strength.

DIMENSIONS

XHW

N Version
Solid Shaft \varnothing 24mm



SPECIAL KITS

- 2774 Viton water seals w/Retainers
- 2777 Viton water seals wo/Retainers
- 2776 Viton water seals \varnothing 15

XHW1450 RPM N VERSION 24MM SOLID SHAFT

MODEL	MAX GPM	MAX L/MIN	MAX PSI	MAX BAR	POWER EBHP	BORE DIA MM	STROKE MM	CRANKSHAFT ID STAMP	WEIGHT LBS.	LIST PRICE
XHW11.17N	2.9	11	2500	170	5	15	15.4	1	14	

MANIFOLD: High strength forged brass nickel plated for long term use.

BOLTS: Eight 8mm grade 8.8.

PLUNGERS: A special thick solid ceramic for long life, strong durability and more resilience.

CRANKCASE: Precision die-cast, large cooling fins and anodized for maximum heat dissipation. Sight glass, fill and side and bottom drain plugs. Special anti-corrosion finish.

BEARINGS: Oversized tapered roller bearing for maximum life and load disbursement.

BEARING SUPPORT: Precision die-cast and machined to assure concentricity and alignment.

VALVES, SEATS, AND SPRINGS: Stainless steel with specially designed Ultra Form cages to provide long life and positive seating.

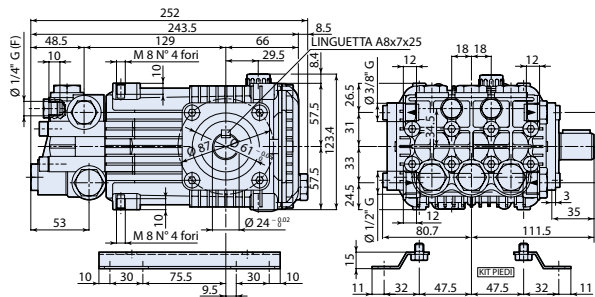
SEALS AND V-PACKINGS: Continuously lubricating for extended life.

PLUNGER RODS: Stainless steel construction for strength, no plating to scrape off, back-up and o-ring plunger sealing system.

CONNECTING RODS: One piece bronze for higher pressure, oversized for maximum strength, load disbursement and long life. Heavy pin area construction, for added load strength.

RHW

N Version
Solid Shaft \varnothing 24mm



SPECIAL KITS

- 2809 Viton water seals \varnothing 18
- 2772 Viton water seals w/Retainer
- 2773 Viton water seals wo/Retainer

RHW 1450 RPM N VERSION 24MM SOLID SHAFT

MODEL	MAX GPM	MAX L/MIN	MAX PSI	MAX BAR	POWER EBHP	BORE DIA MM	STROKE MM	CRANKSHAFT ID STAMP	WEIGHT LBS.	LIST PRICE
RHW15.15N	3.96	15	2200	150	5.5	18	14.6	1	20	

*Available upon special request (non-stock item)

Electric Motor



ELECTRIC MOTORS

MODEL	DESCRIPTION	LIST PRICE
 <p>R1272A</p>	<p>5.0 HP - 24 MM HOLLOW SHAFT - CONNECTOR BOX ON LEFT, BLACK ANODIZED</p> <p>SPECS: RPM: 1750 Voltage: 230V Phase: 1 Hertz: 60 Full Load Amps: 23 Weight: 66 lbs</p> <p>Thermal Protection: On request Enclosure: TEFC Service Factor: 1.0 Frame: H112 Bearings: KBC 6306ZZ / 1pc</p>	
 <p>R6010A R6010B</p>	<p>7.5 HP - 1-1/8" SOLID SHAFT, CONNECTOR BOX ON TOP, BLACK ANODIZED - C-FACE 7.5 HP - 1-3/8" SOLID SHAFT, CONNECTOR BOX ON TOP, BLACK ANODIZED - C-FACE</p> <p>SPECS: RPM: 1750 Voltage: 230/460V Phase: 3 Hertz: 60 Full Load Amps: 22.4/11.2 Weight: 88 lbs</p> <p>Thermal Protection: On request Enclosure: TEFC Service Factor: 1.0 Frame: NEMA 213 Bearings: KBC 6306ZZ / 2pcs</p>	
 <p>R1266A</p>	<p>10 HP - 24MM HOLLOW SHAFT, CONNECTOR BOX ON TOP, BLACK ANODIZED</p> <p>SPECS: RPM: 1750 Voltage: 230/460V Phase: 3 Hertz: 60 Full Load Amps: 28/14 Weight: 88 lbs</p> <p>Thermal Protection: On request Enclosure: TEFC Service Factor: 1.0 Frame: NEMA 213 Bearings: KBC 6308ZZ / 1pc</p>	
 <p>R6011 R6012</p>	<p>10 HP - 1-3/8" SOLID SHAFT, CONNECTOR BOX ON TOP, BLACK ANODIZED - C-FACE 10 HP - 1-3/8" SOLID SHAFT, CONNECTOR BOX ON TOP, BLACK ANODIZED - STANDARD FACE</p> <p>SPECS: RPM: 1750 Voltage: 230/460V Phase: 3 Hertz: 60 Full Load Amps: 29/15 Weight: 104 lbs</p> <p>Thermal Protection: On request Enclosure: TEFC Service Factor: 1.0 Frame: NEMA Standard: 213 / C-Face: 256 Bearings: KBC 6308ZZ / 2pcs</p>	
 <p>R6013 R1245A</p>	<p>15 HP - 1-5/8" SOLID SHAFT, CONNECTOR BOX ON TOP, BLACK ANODIZED - STANDARD FACE 15 HP - 24MM HOLLOW SHAFT, CONNECTOR BOX ON TOP, BLACK ANODIZED - SPECIAL 132L</p> <p>SPECS: RPM: 1750 Voltage: 230/460V Phase: 3 Hertz: 60 Full Load Amps: 37/19 Weight: 165 lbs</p> <p>Thermal Protection: On request Enclosure: TEFC Service Factor: 1.0 Frame: NEMA 256 Bearings: KBC 6308ZZ / 2pcs</p>	
 <p>R6014 R1267A</p>	<p>20 HP - 1-5/8" SOLID SHAFT, CONNECTOR BOX ON TOP, BLACK ANODIZED - STANDARD FACE 20 HP - 24MM HOLLOW SHAFT, CONNECTOR BOX ON TOP, BLACK ANODIZED</p> <p>SPECS: RPM: 1750 Voltage: 230/460V Phase: 3 Hertz: 60 Full Load Amps: 53/27 Weight: 209 lbs</p> <p>Thermal Protection: On request Enclosure: TEFC Service Factor: 1.0 Frame: NEMA 256 Bearings: KBC 6309ZZ / 2pcs</p>	
 <p>MOTORPUMP CONSISTING OF XWAM8G29 PUMP DIRECTLY COUPLED TO 15HP - R1245A</p>	<p>SPECS: RPM: 1750 Voltage: 230/460V Phase: 3 Hertz: 60 Full Load Amps: 37/19 Weight: 165 lbs</p> <p>Thermal Protection: On request Enclosure: TEFC Service Factor: 1.0 Frame: NEMA 256 Bearings: KBC 6308ZZ / 2pcs Dimension: 25(L)x13(W)x14(H)</p>	

Hydraulic Drive Units



HYDRAULIC DRIVE PUMP WITH MOUNTING RAILS AND HYDRAULIC MOTOR

- MOTOR IS 3/4" INLET AND OUTLET
- PUMP IS 1/2" F INLET, 3/8" F OUTLET

RK 1450 RPM

MODEL	MAX GPM	MAX L/MIN	MAX PSI	MAX BAR	HYDRAULIC MOTOR GPM	HYDRAULIC MOTOR L/MIN	HYDRAULIC MOTOR PSI	HYDRAULIC MOTOR BAR	LIST PRICE
HYD-RK15.20	4	15.1	3000	205	7.5	28.4	2500	170	



HYDRAULIC DRIVE PUMP WITH MOUNTING RAILS AND HYDRAULIC MOTOR

- MOTOR IS 3/4" INLET AND OUTLET
- PUMP IS 3/4" F INLET, 3/8" F OUTLET

XW 1450 RPM

MODEL	MAX GPM	MAX L/MIN	MAX PSI	MAX BAR	HYDRAULIC MOTOR GPM	HYDRAULIC MOTOR L/MIN	HYDRAULIC MOTOR PSI	HYDRAULIC MOTOR BAR	LIST PRICE
HYD-XW30.10	8	30.2	1450	100	9.5	36	1800	124	

HYDRAULIC MOTORS

MODEL	C.I.D. (CC's)	RECOMMENDED HYDRAULIC GPM	HYDRAULIC RPM	RECOMMENDED HYDRAULIC PSI	EBHP	SHAFT SIZE	LIST PRICE
HYDM116	0.71 (11.6)	7	1750	2000	6	5/8"	
HYDM203	1.24 (20.3)	12	1750	2000	11	5/8"	
HYDM320	1.94 (31.8)	19	1750	2000	15	5/8"	
HYDM322	2.46 (40.3)	24	1750	2000	21	1"	

Bio Directional = Yes Port Locations = Side Port Size SAE (in/out) = 1-1/16-12 ORB Seal By-pass Port = 1/4"

HYDRAULIC BASE KITS: (PUMPS AND MOTORS NOT INCLUDED)

HYDBK1

(COMPATIBLE WITH HYDRAULIC MOTORS: HYDM116, HYDM203 & HYDM320)

- 12"x18"x1-5/8"
- ZINC PLATED 10 GAUGE STEEL - RUBBER FEET
- PRE-DRILLED FOR XT, XM, RK & XW SERIES PUMPS W/STANDARD MOUNTING RAILS
- CLOSED COUPLE HYDRAULIC MOTOR FLANGE AND SPACER (IF REQ) FOR 5/8" HOLLOW SHAFT (XT & XM SERIES)
- MISC. HARDWARE



HYDBK2

(COMPATIBLE WITH HYDRAULIC MOTORS: HYDM116, HYDM203 & HYDM320)

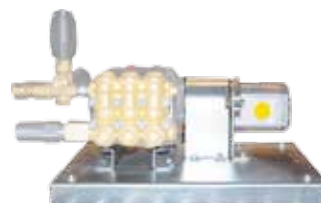
- 12"x18"x1-5/8"
- ZINC PLATED 10 GAUGE STEEL - RUBBER FEET
- PRE-DRILLED FOR XM, RK & XW SERIES PUMPS W/STANDARD MOUNTING RAILS
- FLANGE MOUNT W/L095 FLEX COUPLER (XM & RK "NL" SHAFT ONLY)
- MISC. HARDWARE



HYDBK3

(COMPATIBLE WITH HYDRAULIC MOTOR: HYDM320)

- 14"x19"x1-5/8"
- ZINC PLATED 10 GAUGE STEEL W/2 WELDED RIB SUPPORTS - RUBBER FEET
- U-BRACKET MOUNTING RAILS
- L100 FLEX DRIVE COUPLER
- COUPLER SHIELD
- ZINC PLATED 1/4" STEEL HYDRAULIC MOTOR MOUNT
- PRE-DRILLED FOR XW SERIES PUMPS
- MISC. HARDWARE



HYDBK4

(COMPATIBLE WITH HYDRAULIC MOTOR: HYDM2322)

- 14"x19"x1-5/8"
- ZINC PLATED 10 GAUGE STEEL W/2 WELDED RIB SUPPORTS - RUBBER FEET
- L100 FLEX DRIVE COUPLER
- COUPLER SHIELD
- CAST IRON HYDRAULIC MOTOR MOUNT
- PRE-DRILLED FOR XW, SXW & SHP SERIES PUMPS
- MISC. HARDWARE



Pump - Motor Combo



- Misting Unit with Rubber Foot Mount (no GFCI or cord)

HRM-M 1750 RPM

MODEL	MAX GPM	MAX L/MIN	MAX PSI	MAX BAR	POWER EBHP	BORE DIA MM	MOTOR EBHP	INLET Ø IN.	OUTLET Ø IN.	LIST PRICE
HRM-M 01.08	0.26	1	1160	80	1	12	1	GH	3/8"	
HRM-M 02.08	0.53	2	1160	80	1	12	1	GH	3/8"	
HRM-M 04.08	1.1	4	1160	80	1	12	1	GH	3/8"	



- Pressure Washer Unit with Rubber Foot Mount (with GFCI, 35' Cord) (no Spray Gun or hose)

HRM 3400 RPM

MODEL	MAX GPM	MAX L/MIN	MAX PSI	MAX BAR	POWER EBHP	BORE DIA MM	MOTOR EBHP	INLET Ø IN.	OUTLET Ø IN.	LIST PRICE
HRM8.10	2.11	8	1450	100	0.3	12	1.8	GH	3/8"	
HRM8.10A	2.11	8	1450	100	0.3	12	1.8	GH	3/8"	



- Pressure Washer Unit with Rubber Foot Mount (with GFCI, 35' Cord) (no Spray Gun or hose)

- Misting Unit with Rubber Foot Mount (with GFCI, 35' Cord)

HPE 1750 RPM

MODEL	MAX GPM	MAX L/MIN	MAX PSI	MAX BAR	POWER EBHP	BORE DIA MM	MOTOR EBHP	INLET Ø IN.	OUTLET Ø IN.	LIST PRICE
HPE2G15	2.11	8	1500	100	2	15	2	1/2" M	3/8"	
HPE0.75G10B	0.75	3	1000	69	0.5	15	2	1/2" M	3/8"	

Accessories



CRANKCASE OIL / PUMP SAVER



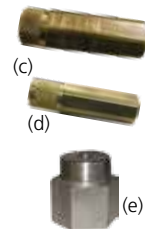
AR Pump Oil is specially formulated Crankcase Oil for High Pressure Pumps. Contains anti-wear, rust inhibitor and deoxidizer additives.



- (a) AR64545 Crankcase Oil
AR Pump Models
XJV, SJV, XJW, SJW & BKV
4.5 oz
- (a) AR64545C Crankcase Oil
AR Pump Models
XJV, SJV, SJW, SJW & BKV
4.5 oz - Case - 24 per package
- (b) AR64516 Crankcase Oil
Triplex Plunger Pump
16 oz
- (b) AR64516C Crankcase Oil
Triplex Plunger Pump
16 oz - Case - 12 per package
- (c) AR64510 Pump Saver
Anti-Freeze Solution

TOOLS

Tools are designed for adjusting the Minimatic and Gymatic unloaders, and rear piston guide extracting tool for the XW series pumps.



- (c) AR1560590 Nut holder
Adjusting Gymatic Unloader
- (d) AR1540740 Nut holder
Adjusting Minimatic Unloader
- (e) AR980069 Rear Piston Guide Extractor
XW Series pumps
Thread Size: 30mm Ø x 1.00mm Pitch

GEAR BOXES - RK, XM & XW SERIES



Gear boxes designed to safely connect pumps and power supplies that operate at different speeds. Gear boxes fit into 1" and 1-1/8" shafts. They feature an SAE J609A flange for proper connection.

- (j) AR1689 RK / XM SERIES
1:2.24 Reduction box for 1" shaft,
SAE J609a flange (1450 RPM Pump)
- (j) AR1690 RKA / XMA SERIES
1:2 Reduction box for 1" shaft,
SAE J609a flange (1750 RPM Pump)
- (j) AR1697 XWA SERIES
1:2 Reduction box for 1" shaft,
SAE J609a flange (1750 RPM Pump)
- (j) AR1698 XW SERIES
1:2.24 Reduction box for 1" shaft,
SAE J609a flange (1450 RPM Pump)
- (j) AR1670 XW SERIES
1:2 Reduction box for 1 1/8" shaft,
SAE J609a flange (1750 RPM Pump)
- (k) AR1600 RK / XR / XW / SXW SERIES
1:2.24 Reduction box for 1" shaft,
SAE J609a flange (1450 RPM Pump)
- (k) AR1601 RK / XR / XW / SXW SERIES
1:2.24 Reduction box for 1 1/8" shaft,
SAE J609a flange (1450 RPM Pump)
- (l) AR1696 RK SERIES
2,65:1 Overgear for tractor P.T.O.

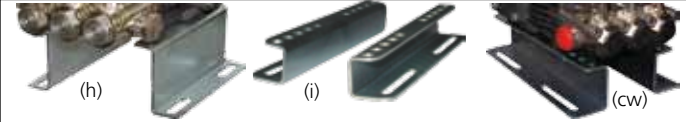
INLET KING NIPPLES (FOR GRAVITY FEED SYSTEMS)



Cadmium plated steel hose barb fitting for high pressure endurance. Hex base allows for standard wrenches to be used during installation. The hex base is large enough to allow accessory ports to be added. Compact design tapered bore for smooth water deliver. Barbs are long enough to allow two clamps to be used if necessary. King nipples assemble directly to the pump no adaptors needed. Barbs are designed to prevent hose slippage and fluid leaks.

- (f) FT783114 1/2" M NPT x 1-1/4" Hose Barb
- (g) FT783112 3/4" M NPT x 1-1/2" Hose Barb

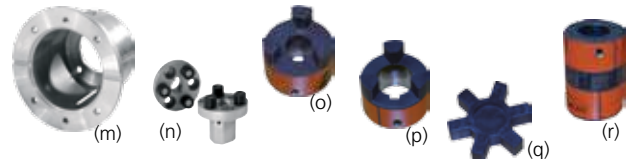
RAIL KITS



Rail kits designed for the N Version pumps. Heights are available from 5/8" up to 2-5/8". Also a universal fitting rail kit is available at 1-1/2" fits most pumps.

	HEIGHT SIZE	PUMP SERIES
(h) AR2729	5/8"	SXM, XM, XM-SS
(h) AR1837	5/8"	RKW, RK, RK-SS
(h) AR2748	1-1/4"	SXW, XW
(h) AR1836	3/8"	XT
(h) AR1836H	1-1/2"	XT
(h) AR2633	1-3/4"	RKW, RK, RK-SS, XM, XM-SS
(h) AR2633H	2-5/8"	RKW, RK, RK-SS, XM, XM-SS
(i) U-Bracket	1-1/2"	Universal fitting RK, XW, SXW
(cw) U-Bracket/CW		Retrofit for CAT310 & 5CP Series Pumps Same bolt mounting pattern..... \$48.51

FLANGES/COUPLINGS - RK, XM & XW SERIES



Flanges and Coupling Sets are designed for safely connect 24mm solid shafted pumps to electric motors which turn at the same speed. Coupling kits are available for connecting either 1-1/8" or 1-3/8" electric motor shafts to the pump. The mounting flange is used to mechanically connect the pump and motor to reduce vibrations, and keep them in proper alignment.

- (m+n) AR1588 F14 - NEMA 182-184 bell housing and flexible coupling set (24mm x 1-1/8")
- (m+r) AR1588-LJ F14 - NEMA 182-184 bell housing and coupling set (LJ- 1-1/8" x 24mm)
- (m+n) AR1589 F15 - NEMA 213-215 bell housing and flexible coupling set (24mm x 1-3/8")
- (m+r) AR1589-LJ F15 - NEMA 213-215 bell housing and coupling set (LJ- 1-3/8" x24mm)
- (m) AR1380490 Bell housing for F14 & F15
- (m) AR1380490-L Bell housing for XW, SXW Series
- (n) AR1380301 Coupling kit, pump side for F14 & F15 (24mm) includes couplings, bushings, and set screws.
- (n) AR1380331 Coupling kit, motor side for F14 (1-1/8") includes couplings, bushings, and set screws.
- (n) AR1380351 Coupling kit, motor side for F15 (1-3/8") includes couplings, bushings, and set screws.
- (o) LJ10024M 24mm coupler
- (p) LJ100138 1-3/8" coupler
- (p) LJ100118 1-1/8" coupler
- (q) LJ100SOX Coupler insert
- (r) LJ-L10011824 Complete 1-1/8" x 24mm set
- (r) LJ-L10013824 Complete 1-3/8" x 24mm set

ELECTRIC CLUTCH - XM, RK & XW SERIES

The Electric Clutch enables operation of the drive system for your pump without the pump itself being engaged. There can be significant reduction in wear and tear on the pump since it is only operating when called for.

- CL-517162 12 Volt Double groove clutch
3/4" x 7" (for "A" section belts)
- CL-521491 12 Volt Single groove clutch
24mm x 7" (for "A" section belts)
- CL-522850 12 Volt Double groove clutch
24mm x 7" (for "A" section belts)
- AR-CLMP Clutch mounting plate

Accessories



THERMAL RELIEF VALVE

TPP140



The TPP140 Thermal Relief Valve Series are mounted into the low pressure side of the pump manifold, and will vent when water temperatures exceed the valve's specifications. This protects the pump from heat abuse.

(a)

Max PSI: 200
Max Temp: 140° F



(b)

(a) TPP140 Inlet 1/2" M

(b) TPP140 3/8" Inlet 3/8" M



(c) TPP140 1/4" Inlet 1/4" M

(c) Black cap included with all TPP140 units



MV610

Max PSI: 145
Max GPM: 8
Outlet: 4mm
Max Temp: 140° F



MV610-12 Safety Valve - 1/2" M Inlet
MV610-38 Safety Valve - 3/8" M Inlet

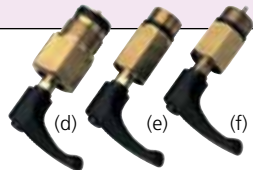
ML610

Max PSI: 145
Max GPM: 8
Outlet: 7.5mm
Max Temp: 133° F



ML610-12 Safety Valve - 1/2" M Inlet
ML610-38 Safety Valve - 3/8" M Inlet
ML610-14 Safety Valve - 1/4" M Inlet

JETTER VALVE



Jetter valves are used to convert standard triplex plunger pumps into a sewer cleaning pump. The disabler pulse valves have adjustable levers enabling the pump to be changed to either configuration, by turning the handle on the valve. When engaged the valve stops the center valve from operating. This causes the pump to pulsate generating the jetting action needed for pipe cleaning.

(d) AR40235 XT, XM: pump disabler 3,000 PSI
(e) AR40161 RK: pump disabler 4,000 PSI
(f) AR40236 XW: pump disabler 4,000 PSI

HIGH PRESSURE BALL VALVES

BALL VALVES

Material: Body, Ball, Adaptor and Stem - Steel AISI - 12L14
Material: Ball Seal - Polyoxymethylene
Material: O-Ring - Nitril Buna Rubber
Temp: 140° F to 194° F
Features: Perfect spherically shaped and ground balls
Anti blow-out stem
Zinc plated body



	Max PSI	Inlet / Outlet	Body Length	Body Width	Body/Stem Height	Handle Length*
GE2N14	7,250	1/4" F	2.8"	1.18"	1.93"	4.33"
GE2N38	7,250	3/8" F	2.9"	1.38"	2.13"	4.33"
GE2N12	7,250	1/2" F	3.3"	1.46"	2.25"	4.33"
GE2N34	7,250	3/4" F	3.7"	1.77"	2.87"	7.10"

*Handle length center to end.

EASY START VALVE

The Easy Start Valve eases internal pump pressures that can make cold starts with gasoline engines difficult. This helps to protect the pump from damage.

Max PSI: 5,000
Max GPM: 5
Max Temp: 300° F
Inlet: 3/8" M
Outlet: 1/4" Hose Barb
Shut off PSI: 120
Reopens PSI: 100



AR4000-2 Easy start valve

SAFETY RELEASE VALVE

Safety release valve eases internal pump pressure that can make cold start with gasoline engine difficult. This helps to protect the pump from damage.

Max PSI: 1,000 - 4,000
Max GPM: 6
Max Temp: 200° F
Inlet: 3/8" M



AR5000-1 Safety release valve

SECURITY VALVE - HIGH PRESSURE

Max PSI: 8,700
Max GPM: 21
Inlet: 1/2" F
By-Pass: 1/2" F
Max Temp: 195° F



AR40398 VRP 600

THREADED VALVE CAP



Threaded valve caps are used for connection of pressure gauges directly to the pump head to monitor pressure levels the pump is developing.

AR1260162T XT, XM series 1/4" NPT TAP Brass
AR1260163 XT, XM series 1/8" NPT TAP Brass
AR960090T RK series 1/4" TAP Brass
AR1941970 XW series 1/4" NPT TAP Brass
AR960850T RK series 1/4" NPT TAP 303 Stainless Steel

RELIEF VALVE - HIGH PRESSURE

Max PSI: 8,100
Max GPM: 21
Inlet: 1/2" F
By-Pass: 3/8" F
Max Temp: 195° F



AR40399 VS500



BOLT ON REGULATING VALVES/CONTROL SETS

Unloader features a bolt on design with internal by-pass system. Adjustable pressure releases pressure in pump head when in by-pass, protecting from over pressurization. Eliminates by-pass hose and fittings. Built-in chemical injector available. The molded plastic adjusting knob is designed for user comfort. Brass body with a stainless steel, plunger and spring, by-pass is aluminum or brass.

MINI-MATIC 4/B

XT - XM Series Unloader Valve and By-Pass

Max PSI: 2,600
Inlet: 1/2" F
Outlet: 3/8" M

	Max GPM	By-Pass	Injector	Size	ID Stamp
AR20821	2-5	Aluminum	-	-	-
AR20888	2-3	Aluminum	Fixed	1.8	1
AR20890	2-3	Aluminum	Adjustable	2.0	2
AR21036	2-5	Brass	-	-	-
AR21037	2-3	Brass	Fixed	2.0	2
AR21038	3-4	Brass	Fixed	2.2	3
AR21039	2-3	Brass	Adjustable	2.0	2
AR21040	3-4	Brass	Adjustable	2.2	3



GYMATIC 3/A 'C'

XM - RK Series Unloader Valve

Max PSI: 3,650
Max GPM: 10
Inlet: 3/8" M
Outlet: 3/8" M
By-Pass: Brass

AR21828 Gymatic 3/A 'C'



GYMATIC 3/B

XM - RK Series Unloader Valve and By-Pass

Max PSI: 3,650
Max GPM: 3 - 5.5
By-Pass: Brass

	Inlet	Outlet	Injector	Size	ID Stamp
AR20242	1/2" F	3/8" M	-	-	-
AR20242G	GHT & Filter	3/8" M	-	-	-
AR20081	1/2" M	3/8" M	-	-	-
AR20082	1/2" M	3/8" M	Fixed	1.8	1
AR20399	1/2" M	3/8" M	Adjustable	1.8	1
AR20400	1/2" F	3/8" M	Adjustable	2.0	2
AR20480	1/2" M NPT	3/8" M NPT	-	-	-



GYMATIC 3B XW

XM - RK Series Unloader Valve and By-Pass

Max PSI: 3,650
Max GPM: 9
Outlet: 3/8" M
By-Pass: Brass
Inlet Fitting: 3/4"

	Inlet Flow	Injector	Size	ID Stamp
AR20802	3/4" F	-	-	-
AR20758	1/2" F	-	-	-
AR20759	1/2" F	Fixed	3.0	2



GYMATIC VR 35 3/B

XM - RK Series Unloader Valve and By-Pass

Max PSI: 4,000
Max GPM: 5
By-Pass: Brass

	Inlet	Outlet	Injector	Size
AR21669	1/2" M	3/8" M NPT	-	-
AR20992	1/2" F	3/8" M	-	-
AR22206	1/2" M	3/8" M NPT	Fixed	2.0
AR22287	1/2" F	3/8" M	Adjustable	2.0



VB285

XM - RK Series Unloader Valve and By-Pass

Max PSI: 4,000
Max GPM: 8
By-Pass: Brass

AR51030 Inlet 1/2" F Outlet 3/8" F



UNLOADER VALVES

VRT

Max GPM: 8
Inlet: 2x3/8" F
Outlet: 3/8" F
By-Pass: 2x3/8" F
Max Temp: 190° F

	Max PSI	Spring Color	Knob
AL605Y	1,500	Yellow	Yes
AL605	2,900	Red	Yes
AL606	3,650	Blue	Yes
AL606EZ	3,650	Blue	Yes
AL607	4,200	Black	Yes
AL607EZ	4,000	Black	Yes
AL005-650213		Repair Kit	



VRT/2

Max GPM: 8
Inlet: 2x3/8" F
Outlet: 3/8" F
By-Pass: 2x3/8" F
Max Temp: 194° F

	Max PSI	Spring Color	Knob
AL605X	2,900	Orange	Yes
AL606X	3,650	Silver	Yes
AL606XA	3,650	Silver	No
AL606XEZ	3,650	Silver	Yes
AL607X	4,350	Gray	Yes
AL607XA	4,350	Gray	No
AL607XEZ	4,350	Gray	Yes



VR2

Max PSI: 2,500
Max GPM: 6
Inlet: 3/8" M
Outlet: 3/8" M
By-Pass: 3/8" M
Max Temp: 190° F
Knob: Yes

AL643 VR2 Unloader
AL005-650204 Repair Kit



MV540

Max PSI: 2,600
Max GPM: 8
Inlet: 3/8" M
Outlet: 3/8" F
By-Pass: 3/8" F
Max Temp: 200° F

MV540 Unloader
MV540K Unloader w/Knob



VRS - UNLOADER

Max PSI: 3,000
Max GPM: 8
Inlet: 3/8" F
Outlet: 3/8" F
Max Temp: 190° F
Spring Color: Red

AL621 By-Pass 1/4" F Knob No
AL623 3/8" F Knob Yes
AL005-650213 Repair Kit



Accessories



MV560

Max PSI: 3,200
 Max GPM: 9
 Inlet: 3/8" M
 Outlet: 3/8" M
 By-Pass: 3/8" F
 Max Temp: 200° F



MV560 Unloader
 MV560K Unloader w/Knob

MV550

Max PSI: 3,600
 Max GPM: 8
 Inlet: 3/8" F
 Outlet: 3/8" F
 By-Pass: 2x1/4" F
 Max Temp: 200° F



MV550 Unloader
 MV550K Unloader w/Knob
 MV550EZ Unloader Easy Start s/Knob

MV580

Max PSI: 3,600
 Max GPM: 8
 Inlet: 3/8" F
 Outlet: 3/8" F
 By-Pass: 1x1/4" F
 Max Temp: 200° F



MV580 Unloader
 MV580K Unloader w/Knob

MV550-PANEL MOUNTING

Max PSI: 3,600
 Max GPM: 8
 Inlet: 3/8" F
 Outlet: 3/8" F
 By-Pass: 2x1/4" F
 Max Temp: 200° F



MV550PM Unloader

VHP

Max GPM: 11
 Inlet: 2x3/8" F
 Outlet: 3/8" F
 By-Pass: 2x3/8" F
 Max Temp: 190° F



	Max PSI	Spring Color	Knob
AL608	4,000	Green	Yes
AL608EZ	4,000	Green	Yes
AL609	5,000	Purple	Yes
AL609EZ	5,000	Purple	Yes
AL650230			Repair Kit

VR35

Max PSI: 5,100
 Max GPM: 9
 Inlet: 3/8" F
 Outlet: 3/8" M
 By-Pass: 3/8" F
 Max Temp: 190° F
 Knob: Yes



AR20831 VR35 Unloader
 AR2876 Repair Kit

SAFETY VALVE / REGULATORS

MV510

Max PSI: 3,600
 Max GPM: 8
 Inlet: 1/4" F
 Outlet: 1/4" F
 Max Temp: 200° F



MV510 Safety Valve

SVL28

Max PSI: 4,060
 Max GPM: 6.6
 Inlet: 1x3/8" F
 Outlet: 3/8" F
 Max Temp: 194° F
 Knob: No



SVL28 Safety Valve

SVT28

Max PSI: 4,060
 Max GPM: 6.6
 Inlet: 2x3/8" F
 Outlet: 3/8" F
 Max Temp: 194° F



SVT28 Safety Valve

SVT40

Max PSI: 5,800
 Max GPM: 6.6
 Inlet: 2x3/8" F
 Outlet: 3/8" F
 Max Temp: 194° F
 Knob: No



SVT40 Safety Valve

MULTI GUN UNLOADER

ZEROMATIC/83

Max PSI: 3,600
 Max GPM: 3 - 10
 Inlet: 1/2" F
 Outlet: 3/8" M
 By-Pass: 2x3/8" F
 Max Temp: 190° F



AR2907 Multi Gun Unloader
 AR1830 Repair Kit

HIGH PRESSURE UNLOADER

VRP175

Max PSI: 2,400
 Max GPM: 53
 Inlet: 1" F
 Outlet: 1" F
 By-Pass: 1" F
 Max Temp: 195° F



AR51034 VRP175

VB80/280

Max PSI: 4,350
 Max GPM: 21
 Inlet: 1/2" F
 Outlet: 1/2" F
 By-Pass: 1/2" F
 Max Temp: 195° F



AR40407 VB80/280

VB16

Max PSI: 8,100
 Max GPM: 21
 Inlet: 1/2" F
 Outlet: 1/2" F
 By-Pass: 1/2" F
 Max Temp: 195° F



AR40397 VB16

Accessories



STAINLESS STEEL UNLOADER VALVES

VR S.S. 316

Max GPM: 12
Inlet: 3/8" F
Outlet: 3/8" M
By-Pass: 1/4" F
Max Temp: 195° F

AR21350 **Max PSI** 2,900

Knob
Yes



VX S.S. 303

Max GPM: 7.8
Inlet: 3/8" F
Outlet: 3/8" F
By-Pass: 1/4" F
Max Temp: 190° F

AL635 **Max PSI** 2,900
AL636 3,650

Spring Color
Red
Blue

Knob
No
Yes



VX S.S. 316

Max GPM: 7.8
Inlet: 3/8" F
Outlet: 3/8" F
By-Pass: 1/4" F
Max Temp: 190° F

AL637 **Max PSI** 2,900
AL638 3,650

Spring Color
Red
Blue

Knob
No
Yes



FLOW SWITCHES

Flow through design, reed switch.

FL60

Max PSI: 4350
Max Temp: 180° F
Max GPM: 8
Voltage: 12-250V
Max Amps: 8
Cord Length: 62"



AL-FL60V	Inlet 3/8" F	Outlet 3/8" F	Mount Vertical
AL-FL60H	Inlet 3/8" F	Outlet 3/8" F	Mount Horizontal

MV60

Max PSI: 4,350
Max GPM: 8
Inlet: 3/8" F
Outlet: 3/8" F
Max Temp: 180° F
Cable Length: 62"



MV60V Flow switch - Vertical
MV60H Flow switch - Horizontal

FS25

Max PSI: 3,600
Max GPM: 8
Inlet: 3/8" M
Outlet: 3/8" m
Max Temp: 180° F
Cable Length: 71"



FS25 Flow switch

PRESSURE SWITCHES - BRASS

The Pressure Switches are designed for balancing pressure washers hot water systems. As the user demands hot water the pressure switch activates to allow water to flow through the heating coil. When demand ceases, the pressure switch closes the circuit to send water through the bypass circuit.

PS3

Activation PSI: 435
Volts: 250
Amps: 15
Max Temp: 190° F
Cord Length: 45"

AL680X **Max PSI** 3,625
AL681X 3,625

Connection
1/4" M
3/8" M



PS2

Max PSI: 3,650
Volts: 250
Amps: 15
Max Temp: 190° F
Cord Length: 45"

Activation PSI

AL690 217.5
AL691 217.5
AL692 362.5
AL693 362.5
AL694 652.5
AL695 652.5

Connection
1/4" M
3/8" M
1/4" M
3/8" M
1/4" M
3/8" M



PS6 - BRASS

Max PSI: 4,060
Volts: 250
Amps: 16
Max Temp: 167° F
Cord Length: 45"



Activation PSI

PS6000 218
PS6010 363
PS6020 652
PS6030 363
PS6040 652

Connection
1/4" M
1/4" M
1/4" M
3/8" M
3/8" M



UNLOADER VALVES WITH PRESSURE SWITCH

MV550

Max PSI: 3,600
Max GPM: 8
Inlet: 3/8" F
Outlet: 3/8" F
By-Pass: 2x1/4" F
Max Temp: 200° F

MV550MS Unloader w/Micro Switch



VRT

Max GPM: 7.8
Inlet: 3/8" F
Outlet: 3/8" F
By-Pass: 2x3/8" F
Max Temp: 190° F
Knob: Yes

AL686 **Max PSI** 3,650
AL687 4,200

Spring Color
Blue
Black



VACUUM SWITCH

MVVS

Connection: 1/4"
 Volt: 220V
 Amp: 16A



Switch with Vacuum at

MVVS1.5	1.5	435
MVVS2.5	2.5	580
MVVS4.5	4.5	435

SPRAY GUNS - FRONT ENTRY

MV910

Max PSI: 2,000
 Max GPM: 5
 Inlet: 1/4" M
 Outlet: 1/4" F
 Max Temp: 180° F



MV910 Trigger Gun

AL121

Max PSI: 2,200
 Max GPM: 7.8
 Inlet: 1/4" M
 Outlet: 1/4" F
 Max Temp: 194° F



AL121 Light Duty Trigger Gun
 AL002-650001 Repair Kit

MV960

Max PSI: 2,600
 Max GPM: 6.7
 Inlet: 1/4" M
 Outlet: 1/4" F
 Max Temp: 300° F



MV960 Trigger Gun

AL110

Max PSI: 3,200
 Max GPM: 7.8
 Inlet: 3/8" F
 Outlet: 1/4" F
 Max Temp: 300° F



AL110 Light Duty Trigger Gun
 AL010-650005 Repair Kit

P4

Max PSI: 3,200
 Max GPM: 8
 Inlet: 3/8" F
 Outlet: 1/4" F
 Max Temp: 300° F



P4 Trigger Gun

SPRAY GUNS - REAR ENTRY

These Spray Guns offer consistent quality, and performance. Designed with an easy pull trigger, these guns can be operated without high levels of fatigue or discomfort normally found in high pressure guns.

ALSK1

Max PSI: 3,200
 Max GPM: 6.6
 Inlet: 3/8" F
 Outlet: 1/4" F
 Max Temp: 300° F



ALSK1 Trigger Gun
 AL017-650020 Repair Kit

ALSK2

Max PSI: 3,625
 Max GPM: 6.6
 Inlet: 3/8" F
 Outlet: 1/4" F
 Max Temp: 140° F



ALSK2 Trigger Gun
 AL017-650021 Repair Kit

MV2005

Max PSI: 3,700
 Max GPM: 8
 Inlet: 3/8" F
 Outlet: 1/4" F
 Max Temp: 320° F



MV2005 Trigger Gun

MV2006

Max PSI: 3,700
 Max GPM: 8
 Inlet: 3/8" F
 Outlet: 1/4" F
 Max Temp: 320° F



MV2006 Trigger Gun

MV920

Max PSI: 4,000
 Max GPM: 6.6
 Inlet: 3/8" F
 Outlet: 1/4" F
 Max Temp: 300° F



MV920 Trigger Gun

Max PSI: 4,000
 Max GPM: 6.6
 Inlet: M22x1.5M
 Outlet: M22x1.5M
 Max Temp: 300° F



MV920M22 Trigger Gun

AL7

Max PSI: 4,000
 Max GPM: 7.8
 Inlet: 3/8" F
 Outlet: 1/4" F
 Max Temp: 140° F



AL7 Cold Water Trigger Gun

Accessories



AL112

Max PSI: 4,060
Max GPM: 10.5
Inlet: 3/8" F
Outlet: 1/4" F
Max Temp: 300° F



AL112 Trigger Gun
AL112Z Zytel Housing Trigger Gun
AL011-650006 Repair Kit

AL19

Max PSI: 4,500
Max GPM: 8
Inlet: 3/8" F
Outlet: 1/4" F
Max Temp: 300° F



AL19 Trigger Gun
AL19Z Zytel Housing Trigger Gun
AL016-6500016 Repair Kit

MV880

Max PSI: 4,500
Max GPM: 10.6
Inlet: 3/8" F
Outlet: 1/4" F
Max Temp: 300° F



MV880 Trigger Gun
MV880CTG Trigger Gun Cartridge Repair

AL35

Max PSI: 5,000
Max GPM: 8
Inlet: 3/8" F
Outlet: 1/4" F
Max Temp: 300° F
Inner Tube: Stainless Steel
Housing: Zytel "Unbreakable"



AL35 Safety Yellow Housing Trigger Gun
AL35SS SS 303 Red Housing Trigger Gun
AL016-650016 Repair Kit (AL35)

AL50

Max PSI: 5,075
Max GPM: 12
Inlet: 3/8" F
Outlet: 1/4" F
Max Temp: 320° F



AL50 Trigger Gun

MV2002

Max PSI: 5,075
Max GPM: 10.6
Inlet: 3/8" F
Outlet: 1/4" F
Max Temp: 320° F



MV2002 Trigger Gun

MV2002

Max PSI: 5,075
Max GPM: 10.6
Inlet: 3/8" F
Outlet: 1/4" F
Max Temp: 320° F



MV2002SS Trigger Gun - Stainless Steel

MV2002

Max PSI: 5,075
Max GPM: 10.6
Inlet: 3/8" F
Outlet: 1/4" F
Max Temp: 320° F



MV2002CB Trigger Gun - Ceramic Ball

SPRAY GUNS - WEEPING

MV920

Max PSI: 4,000
Max GPM: 6.6
Inlet: 3/8" F
Outlet: 1/4" F
Max Temp: 300° F



MV920-W Trigger Gun - Weeping

AL114

Max PSI: 4,060
Max GPM: 10.5
Inlet: 3/8" F
Outlet: 1/4" F
Max Temp: 300° F



AL114Z Trigger Gun
AL011-650006 Repair Kit

AL19

Max PSI: 4,500
Max GPM: 8
Inlet: 3/8" F
Outlet: 1/4" F
Max Temp: 300° F



AL19W Weeping Trigger Gun
AL760551 Repair Kit (Weeping Gun)

ML2002

Max PSI: 5,075
Max GPM: 10.6
Inlet: 3/8" F
Outlet: 1/4" F
Max Temp: 320° F



ML2002W Trigger Gun - Weeping

ML2002

Max PSI: 5,075
Max GPM: 10.6
Inlet: 3/8" F
Outlet: 1/4" F
Max Temp: 320° F



ML2002WSW Trigger Gun Weeping Swivel

Accessories



SPRAY GUNS - SWIVEL

MV2005

Max PSI: 3,700
Max GPM: 8
Inlet: 3/8" F
Outlet: 1/4" F
Max Temp: 320° F



MV2005SW Trigger Gun - Swivel

MV920

Max PSI: 4,000
Max GPM: 6.6
Inlet: 3/8" F
Outlet: 1/4" F
Max Temp: 300° F



MV920S Trigger Gun - Swivel

AL50

Max PSI: 5,075
Max GPM: 12
Inlet: 3/8" F
Outlet: 1/4" F
Max Temp: 320° F



AL50SW Trigger Gun - Swivel

SPRAY GUNS - OPEN GUN

MV2005

Max PSI: 3,700
Max GPM: 8
Inlet: 3/8" F
Outlet: 1/4" F
Max Temp: 180° F



MV2005-OG Open Gun

AL112-OG

Max PSI: 4,060
Max GPM: 10.5
Inlet: 3/8" F
Outlet: 1/4" F
Max Temp: 300° F



AL112-OG Open Gun

SPRAY GUNS - HIGH PRESSURE

RL80

Max PSI: 8,100
Max GPM: 21
Inlet: 1/2" F
Outlet: 1/2" F
Max Temp: 210° F



AR50900 RL80 Trigger Gun

RL600 - SST Gun

Max PSI: 9,500
Max GPM: 15.8
Inlet: 3/8" F
Outlet: 3/8" F
Max Temp: 210° F



AR40400 RL600 SST Trigger Gun

SPRAY GUNS WITH LANCE EXTENSIONS

The Spray Guns with Lance Extensions feature a simple screw connection of a lance and gun to have better reach, and easier cleaning. Hooks up without tools.

OAK - 12" EXTENSION

Max PSI: 1,750
Max GPM: 4
Inlet: 22mm
Outlet: AL/Bayonet
Max Temp: 105° F



OAK-22mmB Trigger Gun with Extension
OAK-BT104B Lance with H/Low Nozzle 1.25mm
OAK-BT10F Lance with H/Low Nozzle 1.20mm
OAK-FOAMER Soap Bottle with Bayonet Inlet
OAK-TURBO-1.25 Turbo Nozzle 1.25mm

BIT105 - 19" EXTENSION

Max PSI: 3,000
Max GPM: 8
Outlet: 22mm x 1.5
Max Temp: 212° F



BIT101-3/8 Inlet 3/8" F

AL9 - 19" EXTENSION

Max PSI: 3,200
Max GPM: 8
Outlet: 22mm x 14mm F
Max Temp: 104° F



AL9-1/4 Inlet 1/4" M
AL650015 Repair Kit

ALSK1 - 14" EXTENSION

Max PSI: 3,200
Max GPM: 6.6
Inlet: 3/8" F
Outlet: 22mm x 14mm F
Max Temp: 300° F



ALSK1-SC7 Trigger Gun with Extension

ALSK2 - 14" EXTENSION

Max PSI: 3,625
Max GPM: 6.6
Inlet: 3/8" F
Outlet: 22mm x 14mm F
Max Temp: 140° F



ALSK2-SC7 Trigger Gun with Extension



EAGLE - 14" EXTENSION

Max PSI: 3,700
Max GPM: 8

	Inlet	Outlet	Max Temp.
EAGLE-22mm	22mm	22mm x 14mm F	140° F
EAGLE-3/8	3/8" F	22mm x 14mm F	140° F
EAGLE-3/8PLUG	Plug	22mm x 14mm F	140° F
EAGLE-K	22mm	22mm Plug	140° F
EAGLE-4	3/8" F	22mm x 14mm F	194° F



MV2005 - MV70 14" EXTENSION

Max PSI: 3,700
Max GPM: 8
Outlet: 22mm x 1.5
Max Temp: 320° F



MV2005-MV70 Inlet 3/8" F

MV2006 - MV70 14" EXTENSION

Max PSI: 3,700
Max GPM: 8
Outlet: 22mm x 1.5
Max Temp: 320° F



MV2006-MV70 Inlet 3/8" F

MV2009 - 14" EXTENSION

Max PSI: 3,800
Max GPM: 7
Outlet: 22mm x 1.5
Max Temp: 212° F



MV2009 Inlet 3/8" F

AL200 - 14" EXTENSION

Max PSI: 4,060
Max GPM: 10.5
Inlet: 3/8" F
Outlet: 22mm x 14mm F
Max Temp: 302° F
Features: 22mm Coupler for Mounting Extensions
Covered Airflow Handle



AL200 Trigger Gun with Extension

ML2002 - L35 EXTENSION

Max PSI: 5,075
Max GPM: 10.6
Outlet: 22mm x 1.5
Max Temp: 320° F



ML2002-L35 Inlet 3/8" F

AL50E - EXTENSION

Max PSI: 5,075
Max GPM: 12
Inlet: 3/8" F
Outlet: 22M
Max Temp: 320° F



AL50E Trigger Gun with Extension

AL19 - 13" EXTENSION

Max PSI: 4,500
Max GPM: 8
Inlet: 3/8" F
Outlet: 22mm x 14mm F
Max Temp: 300° F
Features: 22mm Coupler for Mounting Extensions
Covered Airflow Handle



AL19-SC6 Trigger Gun with Extension

TRIGGER GUN ASSEMBLY

ALSK2 - 36" LANCE

Max PSI: 3,625
Max GPM: 6.6
Inlet: 3/8" F
Outlet: 1/4" F
Max Temp: 140° F
Features: 36" Lance and Nozzle Guard



ALSK2-Lance Trigger Gun with Lance

AL112 - 36" LANCE - HOT WATER DUTY

Max PSI: 4,000
Max GPM: 10
Inlet: 3/8" M Plug
Outlet: 1/4" QC
Max Temp: 300° F
Features: 36" Lance Insulated Grip Wand Assembly



AL432645 Trigger Gun with Lance

LANCES - EXTENSIONS / NOZZLE

AL236 - 12" LANCE

Max PSI: 2,200
Max GPM: 5.5
Inlet: M22 x 14mm
Outlet: VSN (Vari-Spray Nozzle)
Max Temp: 140° F
Features: AL413R (Specify Nozzle Spray Angle 0° to 45°)



AL236 Lance and Nozzle

SF220-AN28 - 22" LANCE

Max PSI: 2,400
Max GPM: 8
Inlet: M22 x 1.5M
Outlet: Nozzle size 041
Max Temp: 140° F
Features: AN28



SF220-AN28 Lance and Nozzle



ALT10 - 18" & 20" LANCE

Max PSI: 3,200
 Max GPM: 5.5
 Inlet: M22 x 14mm
 Outlet: VSN (Vari-Spray Nozzle)
 Max Temp: 140° F
 Features: AL413R (Specify Nozzle Size available between 1.00 to 1.80 see nozzle chart on page 56)



ALT10 18" Lance and Nozzle
 ALT10-L 20" Lance and Nozzle

LANCE WITH TURBO NOZZLE HEAD

Inlet: M22 x 14mm
 Outlet: TN (Turbo Nozzle)
 Max Temp: 300° F
 Length: 18"
 Available Sizes: TTR16 - 1.15, 1.20, 1.25, 1.30, 1.35, 1.40 mm
 TPR20 - 1.30, 1.50 mm
 TPR22 - 1.30, 1.50, 1.70 mm



	Max PSI	Max GPM
TTR16-SF220	2,400	5.0
TPR20-SF220	2,400	5.5
TPR22-SF220	3,625	6.6

AL248 - 18" & 24" LANCE

Max PSI: 5,000
 Max GPM: 10.5
 Inlet: M22 x 14mm
 Max Temp: 302° F
 Lance: Zinc



	Ext. Length	Outlet
AL248	24"	1/4" M
AL248-CS	18"	1/4" FQC
AL248-C	24"	1/4" FQC

DUAL LANCES

Dual Lance Extensions allow easy switching between high pressure cleaning and low pressure chemical application. Stainless Steel pipes give increased life when applying variable pH products. Zinc pipes work well for normal cleaning applications with non-corrosive products. 40" Dual Lance Extensions give the added benefit of easy and comfortable control with the build in molded grip, plastic cover on the valve and enlarged nozzle protector maximize operator safety and comfort.

24" DUAL LANCE EXTENSIONS

Max PSI: 3,000
 Max GPM: 10.5
 Max Temp: 300° F



	Pipe Material	Pipe Size	Inlet	Outlet
AL276	SS	1/4"	M22mm	2x1/4" F
AL276L	SS	1/4"	1/4" F	2x1/4" F
AL278	Zinc	1/4"	M22mm	2x1/4" F
AL281	SS	1/8"	M22mm	2x1/8" F
AL282	Zinc	1/8"	M22mm	2x1/4" F
AL284	SS	1/8"	M22mm	2x1/4" F
AL285	SS	1/8"	M22mm	2x1/8" F
AL286	Zinc	1/8"	M22mm	2x1/4" F
AL650301	Repair Kit			

ALLD102 - 24" LANCE

Max PSI: 3,200
 Max GPM: 10.5
 Inlet: M22mm
 Outlet: 1/4" F
 Max Temp: 140° F
 Features: Pump Action Adjustable High/Low Valve
 Dual Lance Extension Zinc with Protected Aluminum Cover



ALLD102 Dual Lance

40" DUAL LANCE EXTENSIONS

Max PSI: 3,650
 Max GPM: 10.5
 Inlet: 1/4" M
 Pipe Size: 1/8"
 Max Temp: 300° F
 Features: Molded Grip



	Pipe Material	Inlet
AL330	SS	2x1/4" F
AL333	Zinc	2x1/4" F
AL334	Zinc	2x1/8" F
AL650301	Repair Kit	

40" DUAL LANCE EXTENSIONS

Max PSI: 4,000
 Max GPM: 10.5
 Inlet: 1/4" M
 Outlet: 2x1/4" F
 Max Temp: 300° F
 Features: Plastic Cover Over Valve
 Enlarged Nozzle Protector for Maximum Operator Comfort and Safety



	Pipe Material	Pipe Size
AL342	Zinc	1/8"
AL343	Zinc	1/4"
AL344	SS	1/4"
AL650301	Repair Kit	

AL344LS - 40" DUAL LANCE

Max PSI: 4,000
 Max GPM: 10.5
 Inlet: 1/4" M
 Outlet: 1x1/4" F
 Outlet: 1x1/8" F
 Max Temp: 302° F
 Pipe Material: SS
 Pipe Size: 1/4"
 Features: Plastic Cover Over Valve and Enlarged Nozzle Protector for Maximum Operator Comfort and Safety Stainless Steel Seat



AL344LS Dual Lance
 AL344LS-VPKIT Includes wand, 1/4" QC & Soap Nozzle
 AL650301 Repair Kit

AL345 - 40" DUAL LANCE

Max PSI: 4,000
 Max GPM: 10.5
 Inlet: 1/4" M
 Outlet: 2x1/4" F
 Max Temp: 302° F
 Pipe Material: SS
 Pipe Size: 1/4"
 Features: Plastic Cover Over Valve and Enlarged Nozzle Protector for Maximum Operator Comfort and Safety Stainless Steel Seat



AL345 Dual Lance
 AL345-VPKIT Includes wand, 1/4" QC & Soap Nozzle
 AL650301 Repair Kit



LANCES / EXTENSIONS

Lance Extensions allow easy switching between high pressure cleaning and low pressure chemical application. Stainless Steel pipes with molded grip provide durable performance using chemical products that would attack a plated lance. Zinc pipes work well for normal cleaning applications with non-corrosive products. Available with Vented Grips to allow comfortable usage of a lance assembly where hot water would normally prevent it. User's hands won't contact the heated lance.

ZINC LANCES

Max PSI: 5,000
Max GPM: 10.5
Inlet: 1/4" M
Outlet: 1/4" M
Max Temp: 302° F



AL290 16" Lance
AL291 20" Lance
AL292 28" Lance
AL293 36" Lance
AL295 60" Lance

ZINC LANCES WITH MOLDED GRIP

Max PSI: 5,000
Max GPM: 10.5
Inlet: 1/4" M
Outlet: 1/4" M
Max Temp: 302° F



AL352 12" Lance
AL307 16" Lance
AL308 20" Lance
AL309 28" Lance
AL323 24" Lance
AL324 36" Lance (Grip is 4" from end)
AL325 48" Lance
AL326 59" Lance
AL327 67" Lance
AL328 79" Lance

ZINC LANCES WITH MOLDED GRIP

Max PSI: 5,000
Max GPM: 10.5
Inlet: 1/4" M
Outlet: 1/4" M
Max Temp: 302° F



AL323B 24" Lance 11" Grip
AL324B 36" Lance 14" Grip
AL325B 48" Lance 18" Grip
AL326B 59" Lance 22" Grip
AL328B 80" Lance 22" Grip

ZINC 15° BEND LANCE WITH MOLDED GRIP

Max PSI: 5,000
Max GPM: 10.5
Inlet: 1/4" M
Outlet: 1/4" M
Max Temp: 302° F



AL323A 24" Lance

SC5 LANCE

Max PSI: 4,060
Max GPM: 10.6
Inlet: 1/4" M
Outlet: 1/4" F
Max Temp: 300° F



SC5 15" Lance

STAINLESS STEEL 15° BENT LANCE

Max PSI: 5,000
Max GPM: 10.5
Inlet: 1/4" M
Outlet: 1/4" M
Max Temp: 302° F



AL367 36" Lance

STAINLESS STEEL LANCE WITH MOLDED GRIP

Max PSI: 5,000
Max GPM: 10.5
Inlet: 1/4" M
Outlet: 1/4" M
Max Temp: 302° F



AL301 28" Lance
AL302 36" Lance
AL303 48" Lance
AL304 59" Lance
AL306 79" Lance

ZINC 15° BENT & STRAIGHT LANCE

WITH VENTED GRIP AND NOZZLE PROTECTOR

Max PSI: 5,000
Max GPM: 10.5
Inlet: 1/4" M
Outlet: 1/4" F
Max Temp: 302° F



AL359 (Straight) 20" Lance
AL360 20" Lance
AL361 (Straight) 36" Lance
AL362 48" Lance
AL363 59" Lance
AL365 79" Lance

HIGH PRESSURE LANCES / EXTENSIONS

S6-RL600 SST

Max PSI: 9,570
Max GPM: 15.8
Inlet: 3/8" F
Outlet: 1/4" F
Max Temp: 210° F



AR40402 32.3" Lance / Extension
AR40403 48" Lance / Extension

RL80-RL19 SST

Max PSI: 8,100
Max GPM: 21
Inlet: 1/2" M
Outlet: 1/4" F
Max Temp: 210° F



AR40404 31.5" Lance / Extension
AR40405 50" Lance / Extension

UNDERBODY LANCE

Max PSI: 4,060
Max GPM: 10.6
Inlet: M22x1.5 M
Outlet: 1/4" F
Max Temp: 300° F



MVUBL Underbody Lance

LANCE HANDLE

MVLH

Lance Handle 1/4" w/Clamp



AL50ES

Lance Handle 1/4"

Accessories



TELESCOPING LANCES

Telescoping lance, it can extend to a full length of 18' and 24'. The lance is rated for a maximum pressure of 4000 PSI and a flow of 7GPM, with the water being carried through a single steel-braided 1/4" hose.

Max PSI: 4,000
 Max GPM: 7
 Inlet: 3/8" F (Pipe Thread)
 Outlet: 1/4" F (Quick Connect)
 Hose: 1/4"
 Max Temp: 300° F
 Features: Length is in three sections

ARTEL-18 6' - 18' Lance
 ARTEL-24 10' - 24' Lance
 ARTEL-18A 6' - 18' Aluminum Lance
 ARTEL-24A 10' - 24' Aluminum Lance

AR North America telescoping lance belt designed to aid in the handling of the long lance. Made of Nylon it adjust from a minimum of 33" waist to a maximum of 58" waist.

ARTEL-BELT 33" to 58" Waist



The Zero G telescoping lance attachment gives you complete control of 18' and 24' telescoping lances. This one of a kind product enables complete control easy lift and protection from lift breakage.

ARTEL-ZG Zero G Control Kit



AL14TP - NOZZLE PROTECTOR

Max Temp: 300° F

AL14TP 1/4" Nozzle Protector



NOZZLE PROTECTOR - KIT

Max PSI: 5,075
 Max GPM: 16
 Inlet: 1/4" F (G)
 Outlet: 1/4" F (NPT)
 Max Temp: 300° F



AL371802 Nozzle Protector Kit

NOZZLE HOLDER

Max PSI: 4,000
 Max GPM: 16
 Inlet: 1/4" F
 Outlet: 1/4" F
 Max Temp: 320° F



MV115 Nozzle Holder

Max PSI: 4,060
 Max GPM: 8
 Inlet: 1/4" F (G)
 Outlet: 1/4" F (NPT)
 Max Temp: 320° F



AN28 Nozzle Holder

Max PSI: 5,075
 Max GPM: 16
 Inlet: 1/4" F
 Outlet: 1/4" F
 Max Temp: 300° F



MV114 Nozzle Holder

NOZZLE HOLDERS

The Nozzle Holders offer a simple method for controlling pressure in the system. Available as an adjustable hallow nozzle holder, or as a change over nozzle, These fittings reduce the work needed during typical cleaning operations.

AL410N

Max PSI: 3,650
 Max GPM: 7.8
 Inlet: 1/4" F
 Outlet: 1/4" F
 Max Temp: 300° F



AL410N Adjustable Hi/Low Nozzle Holder

AL414 WITH NOZZLE PROTECTOR

Max PSI: 3,650
 Max GPM: 7.8
 Inlet: 1/4" F
 Outlet: 1/4" F
 Max Temp: 300° F



AL414 Adjustable Hi/Low Nozzle Holder

AL416

Max PSI: 2,900
 Max GPM: 8
 Inlet: 1/4" F
 Outlet: 2x1/4" F
 Max Temp: 300° F



AL416 Change Over Nozzle

VARI-SPRAY NOZZLE

The AL413 Vari-Spray series gives the user flexibility to choose the correct spray pattern of any application. Get 0° to 50° coverage adjustable by turning the nozzle head. Push pull for high pressure or low pressure for soap.

AL413F

Max PSI: 3,200
 Max GPM: 5.5
 Inlet: 1/4" F
 Max Temp: 140° F
 Specify orifice size



AL413F 0° - 50° Spray Pattern

IDROJET2

Max PSI: 3,600
 Inlet: 1/4" F
 Max Temp: 300° F



	Orifice Size	Nozzle Size	Color ID
IDROJET2-1.15	1.15	3.7	Red
IDROJET2-1.20	1.20	4.0	Blue
IDROJET2-1.25	1.25	4.3	Brown
IDROJET2-1.30	1.30	4.5	Orange
IDROJET2-1.35	1.35	5.0	Green

Accessories



TURBO NOZZLES

The AL-TPR Turbo Nozzle series delivers maximum cleaning power to your situation. The internally rotating nozzle conveys the water power of a zero degree nozzle, but spins it in a circle to clean a much larger area. For best results, match pump output specifications to those of the turbo nozzle

AL-TTR14

Max PSI: 2,030
 Inlet: 1/4" F
 Spray Angle: 15°
 Max Temp: 105° F
 Features: Stainless Steel Orifice



	Orifice Size	Nozzle Size	Color ID
AL-TTR14-15	1.15mm	2.5 - 3.0	Purple
AL-TTR14-20	1.20mm	2.75 - 3.0	Yellow
AL-TTR14-25	1.25mm	3.0 - 3.25	Green
AL-TTR14-30	1.30mm	3.25 - 3.5	Orange
AL-TTR14-35	1.35mm	3.5	Blue
AL-TTR14-40	1.40mm	3.5 - 4.0	Beige
AL-TTR14-45	1.45mm	4.8	Dark Yellow

AL-TTR16

Max PSI: 2,400
 Inlet: 1/4" F
 Spray Angle: 15°
 Max Temp: 105° F
 Features: Stainless Steel Orifice



	Orifice Size	Nozzle Size	Color ID
AL-TTR16-15	1.15mm	2.5	Purple
AL-TTR16-20	1.20mm	2.75	Yellow
AL-TTR16-25	1.25mm	3.0	Green
AL-TTR16-30	1.30mm	3.25	Orange
AL-TTR16-35	1.35mm	3.5	Blue
AL-TTR16-40	1.40mm	4.0 - 4.5	Beige
AL650415-1.xx	Repair Kit		

AL-TPR20

Max PSI: 2,900
 Inlet: 1/4" F
 Spray Angle: 15°
 Max Temp: 105° F
 Features: Ceramic Orifice



	Orifice Size	Nozzle Size	Color ID
AL-TPR20-30	1.30mm	4.0 - 4.5	Yellow
AL-TPR20-50	1.50mm	5.0	Green
AL650414-1.xx	Repair Kit		

ROTOJETCOMPACT210

Max PSI: 3,000
 Inlet: 1/4" F
 Max Temp: 210° F



	Nozzle Size
ROTOJET210-02	2.0
ROTOJET210-025	2.5
ROTOJET210-03	3.0
ROTOJET210-035	3.5
ROTOJET210-04	4.0

AL-TPR25

Max PSI: 3,625
 Inlet: 1/4" F
 Spray Angle: 15°
 Max Temp: 195° F
 Features: Ceramic Orifice



	Orifice Size	Nozzle Size	Color ID
AL-TPR25-30	1.30mm	4.0	Yellow
AL-TPR25-40	1.40mm	5.0	Blue
AL-TPR25-50	1.50mm	5.5 - 6.0	Green
AL-TPR25-60	1.60mm	6.0 - 6.5	Purple
AL-TPR25-70	1.70mm	7.0 - 7.5	Red
AL650413-1.xx	Repair Kit		

ROTOJET SOFT/HARD

Max PSI: 3,700
 Inlet: 1/4" F
 Max Temp: 200° F



	Nozzle Size
ROTOJETSH-02	2.0
ROTOJETSH-025	2.5
ROTOJETSH-03	3.0
ROTOJETSH-035	3.5
ROTOJETSH-04	4.0
ROTOJETSH-045	4.5
ROTOJETSH-05	5.0
ROTOJETSH-055	5.5
ROTOJETSH-06	6.0
ROTOJETSH-065	6.5
ROTOJETSH-07	7.0

ROTOJET255

Max PSI: 3,700
 Inlet: 1/4" F
 Max Temp: 210° F



	Nozzle Size
ROTOJET255-02	2.0
ROTOJET255-025	2.5
ROTOJET255-03	3.0
ROTOJET255-035	3.5
ROTOJET255-04	4.0
ROTOJET255-045	4.5
ROTOJET255-05	5.0
ROTOJET255-055	5.5
ROTOJET255-06	6.0
ROTOJET255-065	6.5
ROTOJET255-07	7.0

TPL

Max PSI: 4,000
 Inlet: 1/4" F
 Max Temp: 194° F



	Nozzle Size	Color ID
TPL027	2.7	Grey
TPL033	3.3	Red
TPL039	3.9	Yellow
TPL046	4.6	Green
TPL052	5.2	Light Blue

AL-TPL40

Max PSI: 4,000
 Inlet: 1/4" F
 Max Temp: 194° F



	Orifice Size	Nozzle Size	Color ID
AL-TPL40-00	1.00mm	2.5	Gray
AL-TPL40-10	1.10mm	3.0	Red
AL-TPL40-20	1.20mm	4.0	Yellow
AL-TPL40-30	1.30mm	4.5	Green
AL-TPL40-40	1.40mm	5.0	Blue
AL-TPL40-50	1.50mm	5.5	Orange
AL-TPL40-60	1.60mm	6.5	Lilac

Accessories



ROTOJET310

Max PSI: 4,500
Inlet: 1/4" F
Max Temp: 210° F



Nozzle Size
3.0
3.5
4.0
4.5
5.0
5.5
6.0

ROTOJET310-03
ROTOJET310-035
ROTOJET310-04
ROTOJET310-045
ROTOJET310-05
ROTOJET310-055
ROTOJET310-06

AL-TPR35

Max PSI: 5,075
Inlet: 1/4" F
Spray Angle: 15°
Max Temp: 195° F
Features: Ceramic Orifice



Orifice Size	Nozzle Size
1.30mm	4.0
1.40mm	4.5 - 5.0
1.50mm	5.5
1.60mm	6.0
1.70mm	6.5

Color ID
AL-TPR35-30
AL-TPR35-40
AL-TPR35-50
AL-TPR35-60
AL-TPR35-70
AL650418-1.xx

Color ID
Yellow
Blue
Green
Purple
Red

ROTOJET400

Max PSI: 5,800
Inlet: 1/4" F
Max Temp: 200° F



Nozzle Size
10.0
12.0
15.0
20.0

ROTOJET400-10
ROTOJET400-12
ROTOJET400-15
ROTOJET400-20

HIGH PRESSURE NOZZLE

UR50 - HIGH PRESSURE ROTATING NOZZLE

Max PSI: 7,000
Inlet: 1/4" F
Max Temp: 194° F
Features: Stainless Steel Rotating Nozzle



AR40395	Nozzle Size 4.0
AR40396	Nozzle Size 4.5

ROTOJET500

Max PSI: 7,250
Inlet: 1/4" F
Max Temp: 210° F



Nozzle Size
3.0
3.5
4.0
4.5
5.0
5.5
6.0
6.5
7.0
7.5
8.0
9.0
10.0

ROTOJET500-03
ROTOJET500-035
ROTOJET500-04
ROTOJET500-045
ROTOJET500-05
ROTOJET500-055
ROTOJET500-06
ROTOJET500-065
ROTOJET500-07
ROTOJET500-075
ROTOJET500-08
ROTOJET500-09
ROTOJET500-10

SEWER NOZZLES

ROTATING SEWER NOZZLE

Max PSI: 3,625
Max Temp: 300° F
Holes: 3



Inlet	Nozzle Size
MLRSN1804	1/8" F
MLRSN18045	1/8" F
MLRSN1805	1/8" F
MLRSN1806	1/8" F
MLRSN1404	1/4" F
MLRSN14045	1/4" F
MLRSN1405	1/4" F
MLRSN1406	1/4" F
MLRSN38045	3/8" F
MLRSN3805	3/8" F

SS SEWER NOZZLE

Max PSI: 3,625
Max Temp: 300° F
Holes: 3



Inlet	Nozzle Size
MLSSSN1804	1/8" F
MLSSSN18045	1/8" F
MLSSSN18055	1/8" F
MLSSSN18065	1/8" F
MLSSSN1404	1/4" F
MLSSSN14045	1/4" F
MLSSSN14055	1/4" F
MLSSSN14065	1/4" F
MLSSSN38045	3/8" F
MLSSSN38055	3/8" F
MLSSSN38065	3/8" F

TURBO NOZZLES INLET FILTERS

The Inlet Filters were designed to prevent sediment from entering and clogging a turbo nozzle. It will prolong the life of a rotating nozzle to use an inlet filter for any usage.

HP FILTER

Max PSI: 4,000
Max GPM: 8
Inlet: QC
Outlet: 1/4" F
Max Temp: 210° F



MLHP650 Rotating HP Filter

AR3500-QC

Max PSI: 5,000
Max GPM: 8
Inlet: 1/4" QC
Outlet: 1/4" M
Max Temp: 212° F
Features: 100 Mesh Filter
Stainless Steel



AR3500-QC Inline Water Filter

AR3500

Max PSI: 5,000
Max GPM: 8
Inlet: 1/4" F
Outlet: 1/4" M
Max Temp: 212° F
Features: 100 Mesh Filter
Stainless Steel



AR3500 Inline Water Filter

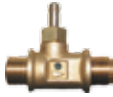
Accessories



INJECTORS

The Chemical Injectors are designed for down stream insertion of chemical products into the pump's pressure stream. These injectors have forged brass bodies and ceramic orifices.

Max PSI: 4,000
Adjustment: Fixed
Inlet: 3/8" M
Outlet: 3/8" M



	GPM	Orifice Size	Color ID
AL471	2 - 3	1.8mm	Green
AL475	3 - 4	2.1mm	Red
AL476	4 - 5.5	2.3mm	Blue

Max PSI: 4,000
Adjustment: Adjustable
Inlet: 3/8" M
Outlet: 3/8" M



	GPM	Orifice Size	Color ID
AL472	2 - 3	1.8mm	Green
AL477	3 - 4	2.1mm	Red
AL478	4 - 5.5	2.3mm	Blue

Max PSI: 4,000
Adjustment: Fixed
Inlet: 3/8" F
Outlet: 3/8" M



	GPM	Orifice Size	Color ID
AL473	2 - 3	1.8mm	Green
AL479	3 - 4	2.1mm	Red
AL480	4 - 5.5	2.3mm	Blue

Max PSI: 4,000
Adjustment: Adjustable
Inlet: 3/8" F
Outlet: 3/8" M



	GPM	Orifice Size	Color ID
AL474	2 - 3	1.8mm	Green
AL481	3 - 4	2.1mm	Red
AL482	4 - 5.5	2.3mm	Blue

MV200 - MVR200

Max PSI: 4,500
Max GPM: 8
Inlet: 3/8" M
Outlet: 3/8" M
Temp: 200° F



	Adjustment	Orifice Size
MV20016	Fixed	1.6mm
MV20018	Fixed	1.8mm
MV20021	Fixed	2.1mm
MV20023	Fixed	2,3mm
MVR20016	Adjustable	1.6mm
MVR20018	Adjustable	1.8mm
MVR20021	Adjustable	2.1mm
MVR20023	Adjustable	2,3mm

MV300 - MVR300

Max PSI: 4,500
Max GPM: 8
Inlet: 3/8" F
Outlet: 3/8" M
Temp: 200° F



	Adjustment	Orifice Size
MV30016	Fixed	1.6mm
MV30018	Fixed	1.8mm
MV30021	Fixed	2.1mm
MV30023	Fixed	2,3mm
MVR30016	Adjustable	1.6mm
MVR30018	Adjustable	1.8mm
MVR30021	Adjustable	2.1mm
MVR30023	Adjustable	2,3mm

MV400 - MVR400

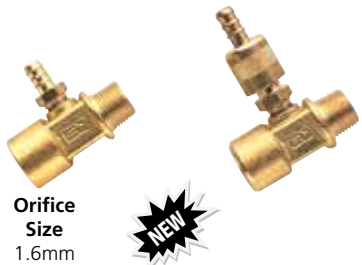
Max PSI: 4,500
Max GPM: 8
Inlet: 3/8" M (NPT)
Outlet: 3/8" M (NPT)
Temp: 200° F



	Adjustment	Orifice Size
MV40016	Fixed	1.6mm
MV40018	Fixed	1.8mm
MV40021	Fixed	2.1mm
MV40023	Fixed	2,3mm
MVR40016	Adjustable	1.6mm
MVR40018	Adjustable	1.8mm
MVR40021	Adjustable	2.1mm
MVR40023	Adjustable	2,3mm

MV410 - MVR410

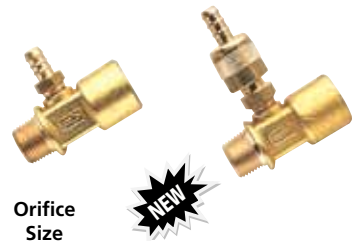
Max PSI: 4,500
Max GPM: 8
Inlet: 3/8" F (NPT)
Outlet: 3/8" M (NPT)
Temp: 200° F



	Adjustment	Orifice Size
MV41016	Fixed	1.6mm
MV41018	Fixed	1.8mm
MV41021	Fixed	2.1mm
MV41023	Fixed	2,3mm
MVR41016	Adjustable	1.6mm
MVR41018	Adjustable	1.8mm
MVR41021	Adjustable	2.1mm
MVR41023	Adjustable	2,3mm

MV420 - MVR420

Max PSI: 4,500
Max GPM: 8
Inlet: 3/8" M (NPT)
Outlet: 3/8" F (NPT)
Temp: 200° F



	Adjustment	Orifice Size
MV42016	Fixed	1.6mm
MV42018	Fixed	1.8mm
MV42021	Fixed	2.1mm
MV42023	Fixed	2,3mm
MVR42016	Adjustable	1.6mm
MVR42018	Adjustable	1.8mm
MVR42021	Adjustable	2.1mm
MVR42023	Adjustable	2,3mm

BALL QUICK COUPLINGS/QUICK CONNECT PLUG

The Quick Couplers are designed for safe and easy connections of frequently changed or moved fittings. They have the highest rated hydrostatic burst pressures in the industry at 24,600 PSI.

- 420 Stainless Steel secured ball bearings
- 75 Shore Viton O-Rings

1/4" BALL QUICK COUPLING

Max PSI: 4,000
 Max Temp: 300° F
 Features: Viton O-Rings
 Stainless Steel Ball Bearings



AL-QC1/4 Ball Quick Coupling 1/4" F Inlet
 AL-QC1/4B Ball Quick Coupling 1/4" F Inlet
 AL-QC1/4MB Ball Quick Coupling 1/4" M Inlet
 AL-QC14M Ball Quick Coupling 1/4" M Inlet

3/8" BALL QUICK COUPLING

Max PSI: 4,000
 Max Temp: 300° F
 Features: Viton O-Rings
 Stainless Steel Ball Bearings



AL-QC3/8 Ball Quick Coupling 3/8" F Inlet
 AL-QC3/8B Ball Quick Coupling 3/8" F Inlet
 AL-QC3/8MB Ball Quick Coupling 3/8" M Inlet

1/4" QUICK COUPLING PLUG

Max PSI: 4,000
 Max Temp: 300° F



AL-PLUG1/4 Quick Coupling Plug 1/4" F Inlet
 AL-PLUG1/4B Quick Coupling Plug 1/4" F Inlet
 AL-PLUG1/4MB Quick Coupling Plug 1/4" M Inlet

3/8" QUICK COUPLING PLUG

Max PSI: 4,000
 Max Temp: 300° F



AL-PLUG3/8 Quick Coupling Plug 3/8" F Inlet
 AL-PLUG3/8B Quick Coupling Plug 3/8" F Inlet
 AL-PLUG3/8M Quick Coupling Plug 3/8" M Inlet
 AL-PLUG3/8MB Quick Coupling Plug 3/8" M Inlet

REPLACEMENT O-RINGS



AL-QCO1/4 1/4" Buna O-Ring
 AL-QCO3/8 3/8" Buna O-Ring
 AL-QCOKIT1/4 1/4" Buna O-Ring Kit of 25
 AL-QCOKIT3/8 3/8" Buna O-Ring Kit of 25
 AL-QCO1/4V 1/4" Viton O-Ring
 AL-QCO3/8V 3/8" Viton O-Ring

SWIVEL - HIGH PRESSURE

HIGH PRESSURE SWIVEL SW600

Max PSI: 9,570
 Max GPM: 15.8
 Inlet: 3/8" F
 Outlet: 3/8" M
 Max Temp: 210° F

AR40406 Swivel Coupler



HIGH PRESSURE SWIVEL RD06

Max PSI: 5,000
 Max GPM: 10.6
 Inlet: 3/8" M
 Outlet: 3/8" F
 Max Temp: 302° F

AL450400 Brass Swivel
 AL450401 Stainless Steel Swivel



SW - SWIVEL

Max PSI: 4,500
 Max GPM: 8
 Inlet: 3/8" M
 Max Temp: 302° F

SW703 Outlet 3/8" F
 SW704 Outlet M22x1.5M
 SW701 Outlet 3/8" F - Stainless Steel



STAINLESS STEEL SWIVEL COUPLING

Max PSI: 4060
 Max GPM: 12
 Max Temp: 320° F
 Swivel: 360°



	Swivel Type	Inlet	Outlet
CW212200	In-Line	1/4" F	1/4" M
CW212210	In-Line	3/8" F	3/8" M
CW212250	90°	1/4" M	1/4" F
CW212260	90°	3/8" M	3/8" F
CW212270	90°	1/4" M	3/8" F

SWIVEL COUPLER/QUICK COUPLINGS & PLUGS

The Twist Style, Fixed Style and Swiveling Style Quick Couplers are designed for safe and easy connections of frequently changed or moved fittings.

SWIVEL COUPLER

Max PSI: 3,000
Max GPM: 7.8
Inlet: 3/8" M
Outlet: 3/8" F
Max Temp: 300° F



AL443 Swivel Coupler

QUICK COUPLING

Max PSI: 3,650
Max GPM: 7.8
Inlet: 1/4" F
Outlet: 22mm x 1.5 F
Max Temp: 300° F



AL450 Quick Coupling
AL450/2 Quick Coupling w/2 O-Ring Backup rings

QUICK COUPLING

Max PSI: 3,650
Max GPM: 7.8
Inlet: 1/4" M
Outlet: 22mm x 1.5 F
Max Temp: 300° F



AL451 Quick Coupling

QUICK COUPLING

Max PSI: 3,650
Max GPM: 7.8
Outlet: 22mm x 1.5 F
Max Temp: 300° F



AL452 Quick Coupling 3/8" M Inlet
AL453 Quick Coupling 3/8" F Inlet

QUICK COUPLING PLUG FIXED

Max PSI: 3,650
Max GPM: 7.8
Outlet: 22mm x 1.5 F
Max Temp: 300° F



AL454 Quick Coupling Plug 1/4" F Inlet
AL455F Quick Coupling Plug Flared 1/4" M Inlet
AL456 Quick Coupling Plug 3/8" F Inlet
AL457 Quick Coupling Plug 3/8" M Inlet

SWIVELING QUICK COUPLING

Max PSI: 3,650
Max GPM: 7.8
Inlet: 1/4" M
Outlet: 1/2" F
Max Temp: 300° F



AL460 Swiveling Quick Coupling

THREE PIECE SWIVELING QUICK COUPLER

Max PSI: 3,650
Max GPM: 7.8
Outlet: 1/2" F
Max Temp: 300° F



AL461 Swiveling Quick Coupling 3/8" M Inlet
AL462 Swiveling Quick Coupling 3/8" F Inlet

QUICK COUPLING PLUG

Max PSI: 3,650
Max GPM: 7.8
Outlet: 1/2" M
Max Temp: 300° F



AL463 Quick Coupling Plug 1/4" F Inlet
AL464 Quick Coupling Plug 3/8" F Inlet
AL465 Quick Coupling Plug 3/8" M Inlet

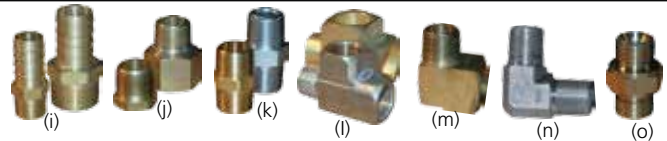
PLUG ADAPTER

Max PSI: 4,000
Max GPM: 8
Inlet: 22mm F
Outlet: 3/8" M
Max Temp: 300° F



AR1263640 Plug Adapter

CONNECTORS



- (i) AR72753106 Nipple 5/8" Barb x 3/8" M
- (i) AR72753108 Nipple 5/8" Barb x 1/2" M
- (j) AR72753128 Bushing 1/2" F x 3/4" M
- (i) AR72753208 Nipple 3/4" Barb x 1/2" M
- (i) AR72753212 Nipple 3/4" Barb x 3/4" M
- (j) AR72753286 Bushing 1/2" F x 3/8" M
- (k) AR72753333 Nipple 3/8" M x 3/8" M BSP 3,000 PSI
- (k) AR72753334 Nipple 3/8" M x 3/8" M NPT 6,000 PSI
- (l) AR72753512 Street Tee 3/4" F x 3/4" F x 3/4" M
- (j) AR72753604 Bushing 1/4" F x 3/8" M
- AR72753742 Elbow 1/8" M NPT x 1/4" HB BRS
- (i) AR72753756 Nipple Hex 3/8" Brass
- AR72753764 Bushing Reducer 1/4" x 3/8"
- (l) AR72753766 Street Elbow 3/8" M x 3/8" F
- (m) AR72753777 Elbow 3/8" M Steel 4,000 PSI
- (i) AR72753784 Nipple 1/2" Barb x 1/4" M
- (i) AR72753786 Nipple 1/2" Barb x 3/8" M
- (n) AR72753888 Street Tee 1/2" F x 1/2" F x 1/2" M
- (o) AR72753966 Nipple 3/8" F x 3/8" F BSP Steel 4,000 PSI
- (j) AR72753986 Bushing 3/8" F x 1/2" M

FOAMER

Max PSI: 1,015
Max GPM: 4.8
Inlet: 22mm F
Max Temp: 105° F

AL22-TLS Foamer



Max PSI: 1,015
Max GPM: 4.8
Inlet: 22mm F
Max Temp: 105° F

FLSURF Foamer



Max PSI: 1,800
Inlet: 1/4" F
Max Temp: 140° F

MVF808 Foamer Lance



Max PSI: 2,900
Max GPM: 5.3
Inlet: 1/4" F
Max Temp: 140° F

FL803 Foamer Lance



LINE STRAINERS

The Line Strainer was designed to remove debris and sediment from the water supply entering the pump. It will prolong the life of a high pressure pump to use a line strainer for any water supply.

AR3000-1

Max PSI: 250
Max GPM: 7
Inlet: GH
Outlet: 1/2" F
Features: .50 Mesh Cone Filter
One 1/8" side port



AR3000-1 Brass Line Strainer

AR3000-2

Max PSI: 250
Max GPM: 7
Inlet: GH
Outlet: 1/2" M
Features: .80 Mesh Cone Filter
One 1/4" side port



AR3000-2 Brass Line Strainer

AR3000-A2

Max PSI: 100
Max GPM: 8
Inlet: 1/2" F
Outlet: 1/2" M
Features: .60 Mesh Cuffed Filter
Two 1/4" side ports



AR3000-A2 Aluminum Line Strainer

AR3000-A2G

Max PSI: 100
Max GPM: 8
Inlet: 1/2" F
Outlet: 1/2" M
Features: .60 Mesh Cuffed Filter
Stainless Steel GHT Tension Spring
Garden Hose Adapter
Two 1/4" side ports



AR3000-A2G Aluminum Line Strainer

AR3600

Max GPM: 8
Inlet: 3/4" F GHT
Outlet: 1/2" M NPT
Max Temp: 175° F
Features: Clear bowl allows for easy viewing of filter



AR3600 Clear Bowl Filter

MV19

Max PSI: 116
Max GPM: 8
Inlet: 3/4" F
Outlet: 3/4" M
Max Temp: 140° F
Features: Plastic - 290 Mesh



MV19 Filter

Y FILTERS

MVY

Max PSI: 225"
Max GPM: 8
Max Temp: 210° F
Mesh: 45
Material: Brass



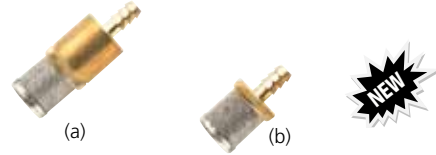
	Inlet	Outlet
MVYF1/2	1/2" F	1/2" F
MVYF3/4	3/4" F	3/4" F

DETERGENT SUCTION FILTER



- (a) AR1341030 1/4" Barb Intake Strainer (Red)
- (b) AL470 1/4" Barb Intake Strainer (Black)
- (c) AR3116 Filter with Check Valve (Brass)

MV13-MV14



- (a) MV13 7mm Barb with check valve
- (b) MV14 8mm Barb without check valve

MV15-MV16

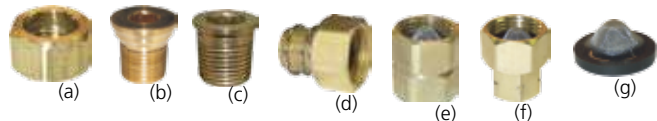


- (a) MV15 6-8mm Barb with check valve (Blue)
- (b) MV16 6-8mm Barb without check valve (Black)

GARDEN HOSE ADAPTERS

The Garden Hose Adapters offer a variety of ways to connect a pressure pump to a garden hose. Choose the fittings that will work best for your hookup.

ADAPTERS



- (a) AR7366 Nut 3/4" F x M
- (b) AR7365 Nipple 3/8" M
- (c) AR7368 Nipple 1/2" M
- (d) AR7300 Nut 3/4" F x M, Nipple 1/2" M
Stainless Steel Tension Spring
- (e) AR2605B GHA Brass Swivel Cone Filter 3/4" F x 3/4" F
- (f) AR1264750 GHA Brass Swivel Cone Filter 3/4" F x 1/2" F
- (g) AR7369 Washer with Cone Filter

Accessories



DETERGENT HOSE



I.D.: 1/4"
O.D.: 3/8"

DETHOSE - FIL4 4' Hose w/AR1341030 Filter
DETHOSE - FIL5 5' Hose w/AR1341030 Filter
DETHOSE - FIL6 6' Hose w/AR1341030 Filter
DETHOSE - 4 4' Hose
DETHOSE - 5 5' Hose
DETHOSE - 6 6' Hose
DETHOSE - 100 100' Hose

THERMOSTATS

Temp Range: 90° F to 250° F
Ratings: UL & CE
Amps: 20
Volts: 250
Capillary: Copper
Capillary Length: 63"
Bulb: Copper
Tube Fitting: 1/2" M NPT
Probe Length: 3.86"
Max Pressure: 4,000



GTV3033 Thermostat

Temp Range: 100° F to 325° F
Ratings: UL & CE
Amps: 20
Volts: 250
Capillary: Copper
Capillary Length: 63"
Bulb: Copper
Tube Fitting: 1/2" M NPT
Probe Length: 3.07"
Max Pressure: 4,000



GTV3036 Thermostat

Temp Range: 0° F to 250° F
Ratings: UL & CE
Amps: 20
Volts: 250
Capillary: Copper
Capillary Length: 63"
Bulb: Copper
Tube Fitting: 1/2" M NPT
Probe Length: 3.86"
Max Pressure: 4,000



GTV3037 Thermostat

PRESSURE GAUGES

AR Pressure Gauges enable the user to see what pressure levels their system is developing. Accurate gauges can warn of internal pump damage, cavitation, pressure spikes, and other problems. Glycerin filled.

PRESSURE GAUGES BOTTOM MOUNT

Case Diameter: 2 1/2"
Case Material: 304 S.S.
Connection Size: 1/4"



	Max Pressure		Graduation	
	PSI		Major	Minor
ARO-300	0 - 300		50	5
ARO-600	0 - 600		100	10
ARO-1000	0 - 1,000		200	20
ARO-1500	0 - 1,500		200	20
ARO-2000	0 - 2,000		500	50
ARO-3000	0 - 3,000		500	50
ARO-5000	0 - 5,000		1,000	100
ARO-6000	0 - 6,000		1,000	100
ARO-6000A	0 - 6,000		1,000	100
ARO-10000	0 - 10,000		1,000	100

PRESSURE GAUGES REAR MOUNT

Case Diameter: 1 1/2"
Case Material: Plastic
Connection Size: 1/8" M



AR3223A	Max Pressure		Graduation	
	PSI		Major	Minor
	2,500		500	50

PRESSURE GAUGES REAR MOUNT

Case Diameter: 1 1/2"
Case Material: 304 S.S.
Connection Size: 1/8" M



AR3223C	Max Pressure		Graduation	
	PSI		Major	Minor
	3,000		500	50

PRESSURE GAUGE DAMPENER

Material: Brass
ARO-SNUB 1/4" Gauge Dampener



SANDBLAST KITS

Instructions: Run the sand suction hose on top of the lance. If sand suction hose is under the lance during operation water can run down the sand suction hose getting the sand wet and it will not flow through the head. Eventually the hose will plug and the assembly will need to be cleaned and dried before using. Several pieces of electrical tape can be used to hold the hose in place. (Figure 1) Silica sand is recommended.



Figure 1

AL420

Sandblasting Nozzle Carbide Tip
Sand Poker

Max PSI: 3,650
Specify Nozzle Size: 3.0 - 1.2mm orifice
3.5 - 1.3mm orifice
4.0 - 1.4mm orifice
4.5/5.0 - 1.5mm orifice
6.0 - 1.6mm orifice



AL420 Sandblast Nozzle and Probe

AL420-KIT

Sandblasting Kit
Sand Poker
Carbide Tip Nozzle
Hose

Max PSI: 3,650
Specify Nozzle Size: 4.5/5.0 - 1.5mm orifice
Hose: 10' Sand Hose
Lance: 24" Extension 22mm x 14 M Inlet



AL420-Kit Sandblast Kit

AL4721000-C

Sandblasting Kit
Sand Poker
Carbide Tip Nozzle
Hose

Max PSI: 3,650
Specify Nozzle Size: 3.0 - 1.2mm orifice
3.5 - 1.3mm orifice
4.0 - 1.4mm orifice
4.5/5.0 - 1.5mm orifice
6.0 - 1.6mm orifice



Hose: 10' Sand Hose
Lance: 36" Extension 22mm M Inlet

AL4721000-C Sandblast Kit

Accessories



AR400

Industrial Sandblasting Kit
Sand Poker
Carbide Tip Nozzle
Hose

Max PSI: 3,000
Nozzle Size: 1/4" F Outlet for 0° MEG Nozzle
Hose: 25' Sand Hose Adjustable Sand Intake

AR400 Industrial Sandblast Kit



AL-TPS450KIT

Industrial Sandblasting Kit
Sand Poker
Carbide Tip Nozzle
Fan Spray
Hose

Max PSI: 7,250
Nozzle Size: 1/4" F Outlet for 5° - 10° MEG Nozzle
Includes 4 MEG Nozzles:
5° Angle - sizes .03, .04, .05 and .06
Hose: 25' Sand Hose Adjustable Sand Intake

AL-TPS450KIT Industrial Sandblast Kit



AL-TPS450

Sandblasting Kit
Sand Poker
Fan Spray

Max PSI: 7,250
Max Temp: 94° F
Nozzle Size: 1/4" F Outlet for 5° - 10° MEG Nozzle

AL-TPS450 Sandblast Kit



AR3187

Sandblasting Kit
Sand Poker
Carbide Tip Nozzle
Hose

Max PSI: 1,300
Max GPM: 2.1
Hose: 10' Sand Hose
Lance: 12" Extension 22mm M Inlet

AR3187 Sandblast Kit



TS33

Sandblasting Head

Max PSI: 3,625
Inlet: 1/4" F
Nozzle Size: .45
Hose Barb: .512"

TS33-045 Sandblast Head



SLUDGE PUMP

Max PSI: 3,700
Max GPM: 4.8
Temp: 300° F
Inlet: M22x1.5M
Outlet: PVC Hose Ø 38mm
Hose Length: 32'
Nozzle size available: 3.5, 4.5, 5.0, 5.5, 6.0

MLSP Sludge Pump



HOSES

OIL RESISTANT SYNTHETIC RUBBER HOSE

Oil Resistant Synthetic Rubber Hoses will meet the pressure ranges for consumer needs. Select the length and fittings needed for each situation.

Max PSI: 2,000
Length: 25'

	Inner Diameter	Inlet	Outlet
AR251420	1/4"	22x14mm	1/4" F
AR251420mm-mm	1/4"	22x14mm	22mm
AR251420-15mm	1/4"	22x15mm	1/4" F
AR2551620	5/16"	22x14mm	1/4" F

Max PSI: 2,000
Length: 30'

	Inner Diameter	Inlet	Outlet
AR3051620-38	5/16"	22x14mm	3/8" M Swivel

Max PSI: 2,600
Length: 25'

	Inner Diameter	Inlet	Outlet
AR251485mm-mm	1/4"	22x14mm	22x14mm

Max PSI: 2,600
Length: 30'

	Inner Diameter	Inlet	Outlet
AR301424mm-mm	1/4"	22x14mm	22x14mm



BRAIDED RUBBER HOSE (SWIVEL ON BOTH ENDS)

Braided Rubber Hoses will handle the higher pressure ranges for commercial/industrial machines. Select the length and pressure needed for the job.

Inner Diameter: 3/8"
Outlet: 3/8" M

	Length	Max PSI	Inlet
AR253830SSP	25'	3,000	3/8" M
P2538-14-22m	25'	3,000	22mm
P3038-14-22m	30'	3,000	22mm
AR303830SSP	30'	3,000	3/8" M
AR403830SSP	40'	3,000	3/8" M
AR403840SSP	40'	4,000	3/8" M
AR503830SSP	50'	3,000	3/8" M
AR753830SSP	75'	3,000	3/8" M
AR1003830SSP	100'	3,000	3/8" M



DRAIN CLEANER HOSE KITS

Drain Cleaner Kits convert a pressure washer into a drain cleaning system. These units adapt to a 22mm coupler, and include a sewer nozzle on the hose assembly. Select the length needed to clean out a problem area.

Max PSI: 1,500
Max GPM: 2
Hose Size: 1/4"
Adapts to Coupler: 22mm

AR3175-45/25	25' Hose
AR3175-45/50	50' Hose
AR3175-45/75	75' Hose
AR3175-45/100	100' Hose





HOSES (RIGID X SWIVEL END WITH HOSE PROTECTORS)



Max PSI: 3,000
 Inner Diameter: 3/8"
 Inlet: 3/8" M
 Outlet: 3/8" M
 Hose Color: Black
 Hose Cover: One Wire Braided Smooth Black

AR253830-S-BLK 25' Hose
 AR503830-S-BLK 30' Hose
 AR1003830-S-BLK 100' Hose

Max PSI: 3,000
 Inner Diameter: 3/8"
 Inlet: 3/8" M
 Outlet: 3/8" M
 Hose Color: Black
 Hose Cover: One Wire Steel Braided Wrapped Black

Hose Color: Black

AR253830-W-BLK 25' Hose
 AR503830-W-BLK 50' Hose
 AR1003830-W-BLK 100' Hose

Max PSI: 4,000
 Inner Diameter: 3/8"
 Inlet: 3/8" M
 Outlet: 3/8" M
 Hose Color: Blue
 Hose Cover: One Wire Steel Braided Wrapped Blue - Non-Marking

Hose Color: Blue

AR503840-BLU 50' Hose
 AR1003840-BLU 100' Hose

Max PSI: 4,000
 Inner Diameter: 3/8"
 Inlet: 3/8" M
 Outlet: 3/8" M
 Hose Color: Grey
 Hose Cover: One Wire Steel Braided Wrapped Black Grey - Non-Marking

Hose Color: Grey

AR503840-GRY 50' Hose
 AR1003840-GRY 100' Hose

Max PSI: 5,400
 Inner Diameter: 3/8"
 Inlet: 3/8" M
 Outlet: 3/8" M
 Hose Color: Black
 Hose Cover: Two Wire Steel Braided Wrapped Black

Hose Color: Black

AR503854-BLK 50' Hose
 AR1003854-BLK 100' Hose

Max PSI: 4,000
 Inner Diameter: 1/2"
 Inlet: 1/2" M
 Outlet: 1/2" M
 Hose Color: Black
 Hose Cover: Two Wire Steel Braided Wrapped Black

Hose Color: Black

AR501240-BLK 50' Hose
 AR1001240-BLK 100' Hose

HOSE REEL

This heavy gauge steel construction hose reel, bolt on design, maximum pressure 3000 PSI, handles 100 feet of 3/8" pressure hose. Designed for use on portable, trailer or truck mount and pressure washers. Can also be mounted for drop lines.



Max PSI: 3,000
 Inlet: 3/8"
 Max Temp: 160° F
 Holds Hose Length: 100' of 3/8" Pressure Hose

AR-REEL100 Hose Reel

SURFACE CLEANERS

Easy and quick to use. Used with either hot or cold-water pressure washers with pressures from 3000 to 4000 PSI and temperatures up to 180° F. Walk behind. Durable. Removes tree sap, dirt and other non permanent materials that you want to remove from hard surfaces. the rotary cleaner blasts away dirt, grease and grime in all sorts of tough cleaning areas...pools, decks, sidewalks, warehouse floors, restaurants, retail/shopping centers, garages, etc

AR-ROTARY12

Max PSI: 4,000
 Max GPM: 8
 Max Temp: 180° F
 Size: 12"
 Color:



AR-ROTARY12 Rotary Cleaner

AR-ROTARY18 & 20

Max PSI: 4,000
 Max GPM: 8
 Max Temp: 180° F
 Size: 18" or 20"
 Color: Yellow Polypropylene



AR-ROTARY18 Rotary Cleaner
 AR-ROTARY20 Rotary Cleaner

AR-ROTARY20SS & AR-ROTARY 24SS

Max PSI: 4,000
 Max GPM: 8
 Max Temp: 180° F
 Color: Stainless Steel



AR-ROTARY20SS 20" Rotary Cleaner
 AR-ROTARY24SS 24" Rotary Cleaner

Accessories



WATER BROOMS

Hooks up to the pressure washer spray gun lance with a standard quick disconnect. Small size, maneuverable, easily stored, won't rust. Use to clean and wash down your driveway, sidewalk, garage floor, deck or patio.

AR-BROOM12

Max PSI: 4,000
Inlet: 1/4" QC Plug
Number of Nozzles: 3
Size: 12"
Color: Stainless Steel



AR-BROOM12 3 Nozzle Broom

AR-BROOM16

Max PSI: 4,000
Inlet: 1/4" QC Plug
Number of Nozzles: 4
Size: 16"
Color: Stainless Steel



AR-BROOM16 4 Nozzle Broom

CARTS

The AR Cart Assemblies simplify building of pressure washers. Check the needed size to fit the pump/motor combination used, then select the cart size that it will best fit on. Use the pre-drilled holes, or modify the cart for custom applications.

AR-CARTS

Electric Unit Cart: TRX - HPV - KBG - VIP
Overall Dimensions: 17"L x 13"W x 32.5"H
Platform: 12.5"L x 8"W
Handle: 32.5"H
Tires: 8"H x 2.75"W Rubber
Color: Black



AR-CART Cart

Pressure Washer Cart: Gas or Electric C56 Frame Units
Overall Dimensions: 24"L x 11"W x 24"H
Platform: 10.5"L x 10.5"W
Handle: 17"H
Tires: 10"H x 3"W Pneumatic
Color: Black



AR-CART5 Cart

Pressure Washer Cart: Gas or Electric Units
Overall Dimensions: 36"L x 22"W x 36"H
Platform: 19"L x 13"W
Handle: 32"H
Tires: 10"H x 3"W Pneumatic
Color: Red



AR-CART11 Cart

HEAVY DUTY CART

Pressure Washer Cart: Gas or Electric Units
Overall Dimensions: 39"L x 29-1/2"W x 36"H
Platform: 24"L x 20-1/2"W
Handle: 36"H
Tires: 11"H x 4"W
Color: Black



Include: 4 Isolators

AR-CART4W25* Cart
AR-CART4W25-BRK Brake Kit

*unit pictured with brake sold separately

PRESSURE WASHERS ACCESSORIES

GFCI - PLUG

GFCI to shut down power supply in the event of electrical ground failure.



14880RT-UR-C Right Angle In-Line
14880RT30-UR-C Right Angle In-Line 30' 16 gauge cord

GUN / WAND / HOSE KIT

Spray Gun with Lance Extension.



Gun: M22mm inlet, 2,500 PSI
Lance: 18" with Vari-Spray Nozzle 1.25mm
Hose: 25' 1/4"
Nozzle: 4.0 Variable Nozzle 0° - 80°

BIT-KIT Gun/Wand/Hose Kit

GUN / WAND / HOSE KIT

Spray Gun with Lance Extension.



Gun: Oak-22mmb, 1,750 PSI
Lance: 36" with Vari-Spray Nozzle 1.25mm
Hose: 25' 1/4"
Nozzle: 4.0 Variable Nozzle 0° - 80°

OAK-KIT Gun/Wand/Hose Kit

HYDRAULIC PUMP/MOTOR ACCESSORIES

BASE PLATES

Clear zinc plated, 10 9 gauge. Hole punched for rubber feet.



HYDB18
HYDB19

Base Plate L18xW14xH1-5/8
Base Plate L19xW12xH1-5/8



HYDB20

Base Plate

RUBBER FEET

AR8367542

Rubber Feet





CLEANING HEADS

BISW060 / BISW120

Self spinning washing heads for containers open on one side. Reduce water consumption by not washing an area of 120° wide at the base of the spray head keeping spray in the container. With a spinning speed of 120 g/min. Aqua Motor.

Max PSI: 2,900
Inlet: 1/2" F
Max Temp: 194° F



	Max GPM	Min. Pass Thru Hole
BISW060	3.9 - 15.8	3.93"
BISW120OB	7.9 - 31.7	6.29"

BIRW086 / BIRW200

Self spinning washing head completely made of stainless steel without any kind of lubricant oils or greases. Application recommended for big containers in food processing, beverage, chemical, pharmaceutical industries and truck and rail tankers. Aqua Motor.

Max PSI: 75 - 2,900
Min. Pass Thru Hole: 5.29" F
Max Temp: 194° F



	Max GPM	Inlet
BIRW086	2.1 - 15.8	1/2" F
BIRW200	15.8 - 52.8	1" F

BIFV020 / BIFV025

Self spinning head for washing medium-large containers (tank trucks, urban refuse containers, silos). With a spinning speed of 2-12 g/min for the FV020 and 10-30 g/min for the FV025. Aqua Motor.

Inlet: 1/2"
Min. Pass Thru Hole: 6.69" F
Max Temp: 194° F



	Max PSI	Max GPM
BIFV020-50	725	2 - 12
BIFV020-200	2,900	2 - 12
BIFV020-400	5,800	2 - 12
BIFV025-50	2,900	10 - 30
BIFV025-200	2,900	10 - 30
BIFV025-400	5,800	10 - 30

BIRW220 / BIRW240

Self spinning head for washing medium-large containers (tank trucks, urban refuse containers, silos). Aqua Motor.

Max PSI: 72 - 435
Max GPM: 15.8 - 52.8
Inlet: 1" F
Max Temp: 194° F



	Min. Pass Thru Hole
BIRW220	11.02"
BIRW240	13.78"

BIPW060 / BIPW063

Self rotating cleaning head working at a set, constant rotating speed. Ideal for "Car Wash", portal and underbody washing systems. With a spinning speed of 65-125 g/min for the PW060LC and 100-140 for the PW063LC. Aqua Motor.

Max PSI: 435 - 2,900
Max GPM: 29 - 435



BIXB030

Round shaped washing heads (without protrusions) for medium-small containers. Especially suited for fitting to automatic systems. E=Electric Motor - P=Air Motor - A=Aqua Motor.

Max PSI: 2,900
Max GPM: 7.9
Min. Pass Thru Hole: 1.96"
Inlet: 1/2"
Max Temp: 194° F



BIXB030E Electric Motor
BIXB030P Air Motor
BIXB030A Aqua Motor

BIXB060

Round shaped washing heads (without protrusions) for medium-small containers. Especially suited for fitting to automatic systems. E=Electric Motor - P=Air Motor - A=Aqua Motor.

Max PSI: 2,900
Max GPM: 15.8
Min. Pass Thru Hole: 1.96"
Inlet: 1/2"
Max Temp: 194° F



BIXB060E Electric Motor
BIXB060P Air Motor
BIXB060A Aqua Motor

BIRC030

Washing head for medium-small containers with minimum 57 mm diameter pass-through hole. E=Electric Motor - P=Air Motor.

Max PSI: 2,900
Max GPM: 7.9
Min. Pass Thru Hole: 2.24"
Inlet: 1/2"
Max Temp: 194° F



BIRC030E Electric Motor
BIRC030P Air Motor

BIXC060

Washing head for medium-large containers with minimum 57 mm diameter pass-through hole. E=Electric Motor - P=Air Motor - A=Aqua Motor.

Max GPM: 15.8
Min. Pass Thru Hole: 2.24"
Inlet: 1/2"
Max Temp: 194° F



	Max PSI
BIXC060E200	2,900
BIXC060ETK	2,900
BIXC060E400	5,800
BIXC060P200	2,900
BIXC060PTK	2,900
BIXC060P400	5,800
BIXC060A200	2,900
BIXC060ATK	2,900

BIROTY018

Washing head for small containers with minimum 40 mm diameter pass-through hole.

Max PSI: 2,176
Max GPM: 4.7
Min. Pass Thru Hole: 1.57"
Inlet: 3/8" F
Max Temp: 194° F



BIROTY018 Washing Head



ROTOSH CLEANING HEADS

ROTOSH/F - FLEX

Tank Cleaning Electric Rotating Head
Cleans and Drains.

Recommended Pressure:	1,160 PSI
Max PSI:	2,030
Max GPM:	6.6
Max Temp:	176° F
Inlet:	3/8" G M
Outlet:	Ø 17mm
Electric Motor:	12 V. cc.
Power Supply:	12 V. cc.
Nozzle Rod Rotating Speed:	52 RPM
Weight:	10.30 lbs
Features:	Electric motor-reductor Water outlet Washing-suction or suction only valve Water inlet Positioner Orbitating head with protection Flexible suction pipe Cable - 10 mt long w/waterproof connections Extension for larger capacity barrel Nozzles Bi-adhesive velcro type for power supply fixing Power supply



ROTOSH/F Cleaning Head

ROTOSH/R - RIGID

Tank Cleaning Electric Rotating Head
Cleans and Drains.

Recommended Pressure:	1,160 PSI
Max PSI:	2,030
Max GPM:	6.6
Max Temp:	176° F
Inlet:	3/8" G M
Outlet:	Ø 17mm
Electric Motor:	12 V. cc.
Power Supply:	12 V. cc.
Nozzle Rod Rotating Speed:	52 RPM
Weight:	10.30 lbs
Features:	Electric motor-reductor Water outlet Washing-suction or suction only valve Water inlet Positioner Orbitating head with protection Flexible suction pipe Cable - 10 mt long w/waterproof connections Extension for larger capacity barrel Nozzles Bi-adhesive velcro type for power supply fixing Power supply



ROTOSH/R Cleaning Head

ROTOSH-SMART

Barrique Cleaning Elector Rotating Washing.

Recommended Pressure:	1,160 PSI
Max PSI:	2,030
Max GPM:	6.6
Max Temp:	176° F
Inlet:	3/8" G M
Outlet:	Ø 30mm
Electric Motor:	12 V. cc.
Power Supply:	12 V. cc.
Nozzle Rod Rotating Speed:	52 RPM
Weight:	61.64 lbs
Features:	Stainless Steel Frame Detachable handle Nylon wheels To be used for 225-300 l barriques Electric panel Connections to Pressure Washer Exhaust water conveyor



ROTOSH-SMART Cleaning Head

AR620 / AR630

KB 2G15 is a powerful high pressure electric cleaner It comes with trigger gun for positive shut off and user safety, pressure adjustment –to tailor pressure to the application, pressure gauge, automatic safety valve with low pressure by-pass, built in detergent suction, tank, easy clean mesh designed water filter - to protect the pump, twist fast coupler for quick removal and attachment of pressure hose. A safety lock prevents the trigger from accidentally engaging when not in use. Equipped with GFCI to shut down power supply in the event of electrical ground failure.

Max PSI:	1,900
Max GPM:	2.1
Horse Power:	2
Amps:	19
Weight:	57 lbs.

Equipped With:

- Triplex pump with ceramic plunger
- Connecting rod system
- Pressure adjustment
- Built-in detergent suction
- Pressure gauge
- Motor thermal protector
- High Pressure 20' hose
- Gun and lance
- Vari-spray nozzle head
- Garden Hose Adapter, filter
- 35' GFCI Cord



Standard Equipment



AR620	Pressure Washer
AR630	Pressure Washer - Brass Head
AR630-Hot	180° F Inlet Temp

High Pressure Accessories



SECURITY VALVE - HIGH PRESSURE

Max PSI: 8,700
Max GPM: 21
Inlet: 1/2" F
By-Pass: 1/2" F
Max Temp: 195° F



AR40398 VRP 600

RELIEF VALVE - HIGH PRESSURE

Max PSI: 8,100
Max GPM: 21
Inlet: 1/2" F
By-Pass: 3/8" F
Max Temp: 195° F



AR40399 VS500

HIGH PRESSURE UNLOADER

VB16

Max PSI: 8,100
Max GPM: 21
Inlet: 1/2" F
Outlet: 1/2" F
By-Pass: 1/2" F
Max Temp: 195° F



AR40397 VB16

VB80/280

Max PSI: 4,350
Max GPM: 21
Inlet: 1/2" F
Outlet: 1/2" F
By-Pass: 1/2" F
Max Temp: 195° F



AR40407 VB80/280

VRP175

Max PSI: 2,400
Max GPM: 53
Inlet: 1" F
Outlet: 1" F
By-Pass: 1" F
Max Temp: 195° F



AR51034 VRP175

BOLT ON UNLOADER

VB285

XM - RK Series Unloader Valve and By-Pass

Max PSI: 4,000
Max GPM: 8
By-Pass: Brass

	Inlet	Outlet
AR51030	1/2" F	3/8" F



SPRAY GUNS - HIGH PRESSURE

RL80 - REAR ENTRY

Max PSI: 8,100
Max GPM: 21
Inlet: 1/2" F
Outlet: 1/2" F
Max Temp: 210° F



AR50900 RL80 Trigger Gun

RL600 - SST GUN - REAR ENTRY

Max PSI: 9,500
Max GPM: 15.8
Inlet: 3/8" F
Outlet: 3/8" F
Max Temp: 210° F



AR40400 RL600 SST Trigger Gun

HIGH PRESSURE LANCES / EXTENSIONS

S6-RL600 SST

Max PSI: 9,570
Max GPM: 15.8
Inlet: 3/8" F
Outlet: 1/4" F
Max Temp: 210° F



AR40402 32.3" Lance / Extension
AR40403 48" Lance / Extension

RL80-RL19 SST

Max PSI: 8,100
Max GPM: 21
Inlet: 1/2" M
Outlet: 1/4" F
Max Temp: 210° F



AR40404 31.5" Lance / Extension
AR40405 50" Lance / Extension

SWIVEL - HIGH PRESSURE

HIGH PRESSURE SWIVEL SW600

Max PSI: 9,570
Max GPM: 15.8
Inlet: 3/8" F
Outlet: 3/8" M
Max Temp: 210° F



AR40406 Swivel Coupler

HIGH PRESSURE NOZZLE

UR50 - HIGH PRESSURE ROTATING NOZZLE

Max PSI: 7,000
Inlet: 1/4" F
Max Temp: 194° F
Features: Stainless Steel Rotating Nozzle



AR40395 Nozzle Size 4.0
AR40396 Nozzle Size 5.5

HIGH PRESSURE SWIVEL RD06

Max PSI: 5,000
Max GPM: 10.6
Inlet: 3/8" M
Outlet: 3/8" F
Max Temp: 302° F



AL450400 Brass Swivel
AL450401 Stainless Steel Swivel

HIGH PRESSURE BALL VALVES

BALL VALVES

Material: Body, Ball, Adaptor and Stem - Steel AISI - 12L14
Material: Ball Seal - Polyoxymethylene
Material: O-Ring - Nitril Buna Rubber
Temp: 140° F to 194° F
Features: Perfect spherically shaped and ground balls
Anti blow-out stem
Zinc plated body



	Max PSI	Inlet / Outlet	Body Length	Body Width	Body/ Stem Height	Handle Length*
GE2N14	7,250	1/4" F	2.8"	1.18"	1.93"	4.33"
GE2N38	7,250	3/8" F	2.9"	1.38"	2.13"	4.33"
GE2N12	7,250	1/2" F	3.3"	1.46"	2.25"	4.33"
GE2N34	7,250	3/4" F	3.7"	1.77"	2.87"	7.10"

*Handle length center to end.



ADAPTERS



- (a) GF3005 Quick Connector with Filter
- (b) GF0421 22mm M x 1.5 F Adapter
- (c) GF0424 KEW Bayonet Adapter
- (d) GF0442 Bayonet Adapter
- (d) AR40542 Oak Bayonet Adapter
- (e) GF0437 M Adapter - Fits AR215
- (f) GF3433 Click F - Nipple x 3/4" F Threads
- (g) GF3434 Click F - Nipple x 3/4" M Threads
- (h) AR3400 1/4" M x 22mm F Coupler

SWIVEL JOINT HANDLES



- (k) GF3125 Gear Driven Rotary Brush
- (l) GF3176 Gear Driven Rotary Brush

ROTARY BRUSH

- Max PSI: 435
- Inlet: 1/4" M
- Max Temp: 86° F

ALAA1 Professional Rotary Brush



EXTENSIONS / DISPENSER

20" EXTENSION RODS

GF3300 Aluminum Fixed



20" EXTENSION RODS

GF3305 Aluminum Swivel Joint



24" EXTENSION RODS

GF3310 Aluminum Coated Fixed



24" EXTENSION RODS

GF3315 Aluminum Coated Swivel Joint



DISPENSER

GF5800 Liquid Soap Dispenser



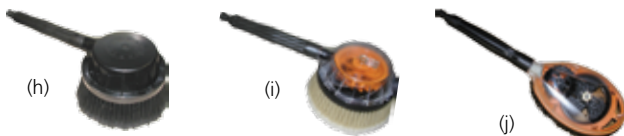
GF3401 Angled nozzle used w/GF5800



ROTATING BRUSHES

The Rotating Brushes are designed to reduce the work necessary to properly clean an area. They are engineered for usage on automobiles, on wall surfaces and some models are specifically for usage on floors.

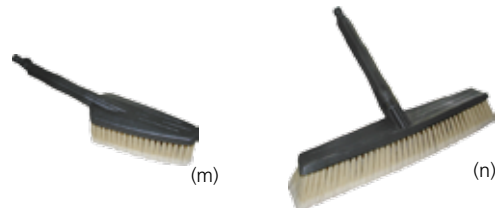
FIXED STRAIGHT HANDLES



- (h) GF3110 Direct Drive Rotary Brush
- (i) GF3124 Gear Driven Rotary Brush
- (j) GF3175 Gear Driven Rotary Brush

FIXED BRUSHES

The Fixed Brushes are designed to reduce the work necessary to properly clean an area. They are designed for usage on automobiles, for wall surfaces and some models are designed for usage on floors.



- (m) GF3218 One Piece Utility Brush
- (n) GF3200 Standard Fixed Broom Brush

BRUSH KITS

PATIO BRUSH

- Quick Connect Adapter
- Gun
- Liquid Soap Dispenser
- 2' Extension
- Hydro Brush - Hard Bristles
- Adjustable Spray Nozzle

GF5154 Patio Brush Set



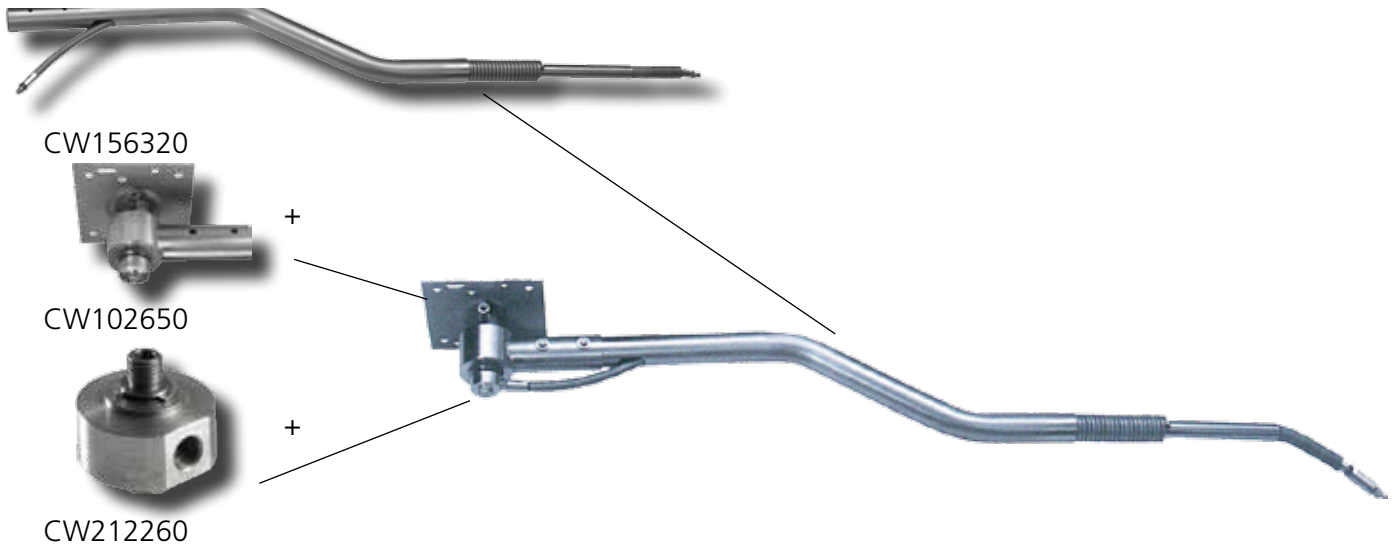
BOAT BRUSH

- Quick Connect Adapter
- Gun
- Liquid Soap Dispenser
- 2' Extension
- Hydro Brush - Soft Bristles
- Adjustable Spray Nozzle

GF5167 Boat Brush Set

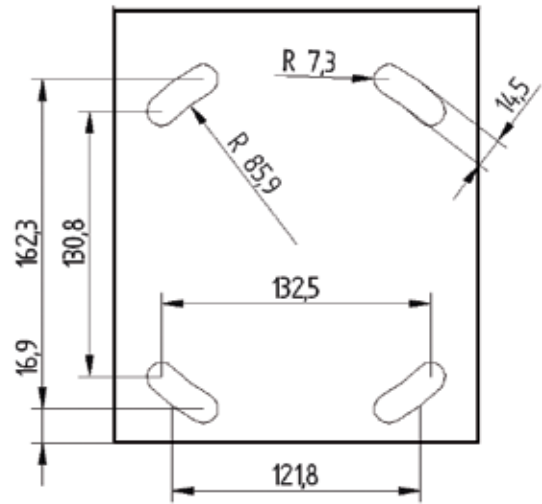
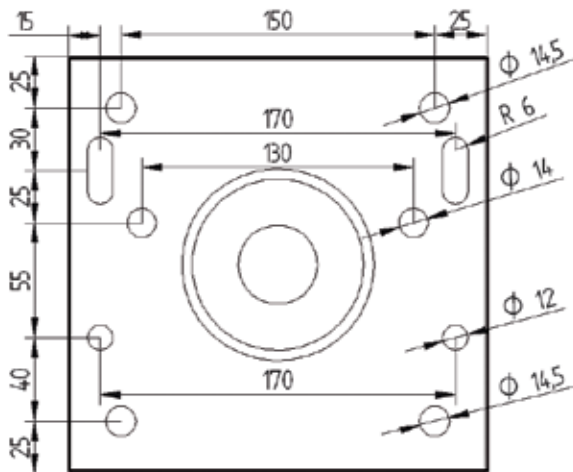


Add:



Patented Design

Drilling Pattern





CAR WASH EQUIPMENT

"Z" SHAPED STAINLESS STEEL BOOM

Max PSI: 4,060
 Max GPM: 12
 Max Temp: 320° F
 Inlet: 1/4" F
 Outlet: 1/4" M
 Length: 61"



- (a) CW156310 "Z" Fixed Boom
 (b) CW156320 "Z" Flexible Boom

RIGID STAINLESS STEEL BOOM

Max PSI: 4,060
 Max GPM: 12
 Max Temp: 320° F
 Inlet: 1/4" M
 Outlet: 1/4" M



- CW156220 Rigid Boom 69" Long
 CW156230 Rigid Boom 79" Long
 CW156240 Rigid Boom 99" Long
 CW156250 Rigid Boom 118" Long

FLEXIBLE STAINLESS STEEL BOOM

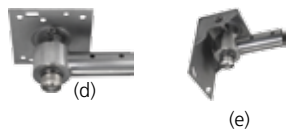
Max PSI: 4,060
 Max GPM: 12
 Max Temp: 320° F
 Inlet: 1/4" M
 Outlet: 1/4" M



- CW156260 Flexible Boom 63" Long
 CW156270 Flexible Boom 69" Long
 CW156280 Flexible Boom 79" Long
 CW156290 Flexible Boom 99" Long
 CW156300 Flexible Boom 118" Long

STAINLESS STEEL BOOM BRACKET

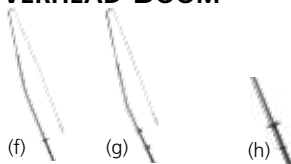
Max PSI: 4,060
 Max GPM: 12
 Max Temp: 320° F
 Inlet: 1/4" F
 Outlet: 1/4" F



- (d) CW102630 Ceiling Mount Bracket 360° Swivel for Rigid & Flexible Boom
 (d) CW102650 Ceiling Mount Bracket 360° Swivel 3° Bracket for "Z" Shaped Boom
 (e) CW102640 Wall Mount Bracket 180° Swivel for Rigid & Flexible Boom

STAINLESS STEEL OVERHEAD BOOM

Max PSI: 4,060
 Max GPM: 12
 Max Temp: 320° F
 Inlet: 1/4" M
 Outlet: 3/8" F



- (f) CW156360 Rotating Overhead Boom 195" Long
 (g) CW156370 Overhead Boom 122" Long
 (h) CW212180 Rotating Overhead Boom Kit

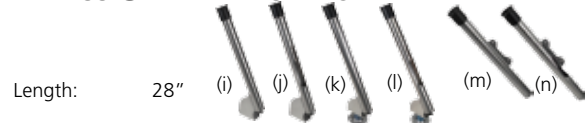
STAINLESS STEEL SWIVEL COUPLING

Max PSI: 4060
 Max GPM: 12
 Max Temp: 320° F
 Swivel: 360°



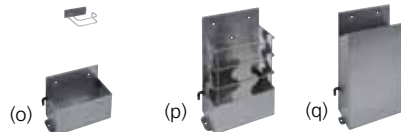
	Swivel Type	Inlet	Outlet
CW212200	In-Line	1/4" F	1/4" M
CW212210	In-Line	3/8" F	3/8" M
CW212250	90°	1/4" M	1/4" F
CW212260	90°	3/8" M	3/8" F
CW212270	90°	1/4" M	3/8" F

STAINLESS STEEL LANCE HOLDER



- Length: 28" (i) (j) (k) (l) (m) (n)
- (i) CW216000 Fixed - floor mounting
 (j) CW216010 Fixed - floor mounting w/safety stop
 (k) CW216040 Flexible - floor mounting w/spring
 (l) CW216050 Flexible - floor mounting w/safety stop and spring
 (m) CW216060 Fixed - wall mounting
 (n) CW216070 Fixed - wall mounting w/safety stop

STAINLESS STEEL BRUSH HOLDER



Floor or Wall mounting

- (o) CW217000 Brush Holder 250 - 15" x 6" x 10"
 (p) CW217010 Brush Holder 550 - 15" x 6" x 22"
 (q) CW217020 Brush Holder 600 - 14" x 6" x 24"

STAINLESS STEEL LANCE

Max PSI: 4060
 Max GPM: 12
 Max Temp: 320° F
 Inlet: 1/4" M
 Outlet: 1/4" F
 Length: 28"



CW202000 Car Wash Lance

RKW 950 RPM N VERSION 24MM SOLID SHAFT

Max PSI: 2000
 Max GPM: 3.96
 Max Temp: 140° F
 Inlet: 1/2" F
 Outlet: 3/8" F
 RPM: 950



RKW15.14N Car Wash Pump

AL19W

Max PSI: 4,500
 Max GPM: 8
 Inlet: 3/8" F
 Outlet: 1/4" F
 Max Temp: 300° F



AL19W Weeping Trigger Gun



BLUE CLEAN PRESSURE CLEANERS



AR Blue Clean comes in an array of models to meet every cleaning requirement, all extremely easy to handle and offer the highest performance, safety and quality standards that stand the test of time.

AR Blue Clean power-jet cleaners have a vast array of tailor-made accessories, making every machine extremely versatile and ready to solve all your cleaning projects.



1-800-346-4876

AR Blue Clean Electric Pressure Washers



BLUE CLEAN ELECTRIC PRESSURE WASHERS

AR112

Cold water pressure cleaner is fitted with Triplex pump with axial pistons controlled by wobble plate, Total Stop System for automatic start/stop - Water filter - quick connect garden hose - Universal electric motor - Adjustable spray head with pencil and fan jet settings - Detergent injector Kit.

Max PSI: 1,600
 Max GPM: 1.58
 Horse Power: 1.1
 Motor: 120V 60Hz / 11 amps
 Weight: 14.5 lbs.

Equipped With:

- Gun
- Lance with adjustable jet nozzle
- 20' high pressure hose
- Foam dispenser
- Total Stop System



Standard Equipment



AR112 Pressure Washer

AR141

Cold water pressure cleaner is fitted with Triplex pump with axial pistons controlled by wobble plate, Total Stop System for automatic start/stop - Water filter - quick connect garden hose - Universal electric motor - Adjustable spray head with pencil and fan jet settings - Detergent injector Kit.

Max PSI: 1,750
 Max GPM: 1.63
 Horse Power: 1.2
 Motor: 120V 60Hz / 12 amps
 Weight: 17 lbs.

Equipped With:

- Gun
- Lance with adjustable jet nozzle
- 20' high pressure hose
- Foam dispenser
- Total Stop System



Standard Equipment



AR141 Pressure Washer

AR118

Cold water pressure cleaner is fitted with Triplex pump with axial pistons controlled by wobble plate, Total Stop System for automatic start/stop - Water filter - quick connect garden hose - Universal electric motor - Adjustable spray head with pencil and fan jet settings - Detergent injector Kit.

Max PSI: 1,500
 Max GPM: 1.58
 Horse Power: 1.1
 Motor: 120V 60Hz / 11 amps
 Weight: 14.5 lbs.

Equipped With:

- Gun
- Lance with adjustable jet nozzle
- 20' high pressure hose
- Foam dispenser
- Total Stop System



Standard Equipment



AR118 Pressure Washer

AR240

Cold water pressure cleaner is fitted with Triplex pump with axial pistons controlled by wobble plate, Total Stop System for automatic start/stop - Water filter - quick connect garden hose - Universal electric motor - Adjustable spray head with pencil and fan jet settings - Detergent injector Kit.

Max PSI: 1,750
 Max GPM: 1.58
 Horse Power: 1.3
 Motor: 120V 60Hz / 12.5 amps
 Weight: 19 lbs.

Equipped With:

- Gun
- Lance with adjustable jet nozzle
- 18' high pressure hose
- Foam dispenser
- Turbo lance
- Fix brush
- Total Stop System



Standard Equipment



AR240 Pressure Washer

AR Blue Clean Electric Pressure Washers



AR383

Cold water pressure cleaner is fitted with Triplex pump with axial pistons controlled by wobble plate, Total Stop System for automatic start/stop - Water filter – quick connect garden hose – Universal electric motor - Adjustable spray head with pencil and fan jet settings - Detergent injector Kit.

Max PSI: 1,900
 Max GPM: 1.51
 Horse Power: 1.5
 Motor: 120V 60Hz / 14 amps
 Weight: 22 lbs.

Equipped With:

- Gun
- Lance with adjustable jet nozzle
- 20' high pressure hose
- Foam dispenser
- Static hose reel
- Rotary brush
- Turbo nozzle/lance
- Total Stop System



Standard Equipment



AR383 Pressure Washer

AR620 / AR630

KB 2G15 is a powerful high pressure cleaner It comes with trigger gun for positive shut off and user safety, pressure adjustment –to tailor pressure to the application, pressure gauge, automatic safety valve with low pressure by-pass, built in detergent suction, tank, easy clean mesh designed water filter - to protect the pump, twist fast coupler for quick removal and attachment of pressure hose. A safety lock prevents the trigger from accidentally engaging when not in use. Equipped with GFCI to shut down power supply in the event of electrical ground failure.

Max PSI: 1,900
 Max GPM: 2.1
 Horse Power: 2
 Motor: 120V 60Hz / 19 amps
 Weight: 57 lbs.

Equipped With:

- Triplex pump with ceramic plunger
- Connecting rod system
- Pressure adjustment
- Built-in detergent suction
- Pressure gauge
- Motor thermal protector
- High Pressure 25' hose
- Gun and lance
- Vari-spray nozzle head
- Garden Hose Adapter, filter
- 35' GFCI Cord
- Total Stop System



Standard Equipment

AR620 Pressure Washer
 AR630 Pressure Washer - Brass Head
 AR630-Hot 180° F Inlet Temp

AR610

Split lance for fast sudsing and power cleaning, pressure adjustment, built in detergent suction, pressure gauge are all features. Automatic safety valve with low pressure by-pass and a detergent injector kit with low pressure soap. Thermal switch shuts off when temperature rises too high. It is designed to be compact and very portable. Detergent tank and handle allow for easy movement between jobs. A safety lock prevents the trigger from accidentally engaging when not in use. Equipped with GFCI to shut down power supply in the event of electrical ground failure.

Max PSI: 1,800
 Max GPM: 2.1
 Horse Power: 1.7
 Motor: 120V 60Hz / 15 amps
 Weight: 48 lbs.

Equipped With:

- Triplex pump with ceramic plunger
- Connecting rod system
- Pressure adjustment
- Built-in detergent suction
- Pressure gauge
- Motor thermal protector
- Detergent tank 7 oz
- High Pressure 25' hose, gun and lance
- High/Low pressure adjustable spray head
- Garden Hose Adapter, filter
- 35' GFCI Cord
- Total Stop System



Standard Equipment



AR610 Pressure Washer

AR767

AR767 is all you are looking for a high quality professional pressure washer. The sharp ergonomic design –new trolley, built in detergent suction, built in detergent tank- guarantees unrestricted mobility and no effort. The pressure adjustment tailors the pressure to the application. Optional Hose Reel. A safety lock prevents the trigger from accidentally engaging when not in use. Equipped with GFCI to shut down power supply in the event of electrical ground failure.

Max PSI: 1,900
 Max GPM: 2.1
 Horse Power: 2
 Power: 115V 60Hz / 19 amps
 Weight: 75 lbs.

Equipped With:

- Two wheel trolley
- Pressure adjustment
- Pressure gauge
- High/Low pressure adjustable
- Spray wand
- Gun/Wand assembly
- Built in detergent suction
- Built in detergent tank
- High Pressure hose 25'
- Automatic safety valve with low pressure by-pass
- Induction motor
- Motor thermal protector
- Total Stop System



Standard Equipment



AR767 Pressure Washer
 AR40340 Hose Reel with 25' Rubber Hose

Information Page



SPRAY NOZZLE CHART

Nozzle size	1000 PSI	1200 PSI	1250 PSI	1300 PSI	1500 PSI	1800 PSI	2000 PSI	2100 PSI	2200 PSI	2300 PSI	2400 PSI	2500 PSI	3000 PSI	3200 PSI	3500 PSI	4000 PSI	5000 PSI
2.0	1.00	1.10	1.12	1.14	1.22	1.34	1.41	1.45	1.48	1.52	1.55	1.58	1.73	1.79	1.87	2.00	2.40
2.5	1.25	1.37	1.40	1.43	1.53	1.68	1.77	1.81	1.85	1.90	1.94	1.98	2.17	2.24	2.34	2.50	2.80
3.0	1.50	1.64	1.68	1.71	1.84	2.01	2.12	2.17	2.22	2.27	2.32	2.37	2.60	2.68	2.81	3.00	3.35
3.5	1.75	1.92	1.96	2.00	2.14	2.35	2.47	2.54	2.60	2.65	2.71	2.77	3.03	3.13	3.27	3.50	3.91
4.0	2.00	2.19	2.24	2.28	2.45	2.68	2.83	2.90	2.97	3.03	3.10	3.16	3.46	3.58	3.74	4.00	4.47
4.5	2.25	2.46	2.52	2.57	2.76	3.02	3.18	3.26	3.34	3.41	3.49	3.56	3.90	4.02	4.21	4.50	5.03
5.0	2.50	2.74	2.80	2.85	3.06	3.35	3.54	3.62	3.71	3.79	3.87	3.95	4.33	4.47	4.68	5.00	5.59
5.5	2.75	3.01	3.07	3.14	3.37	3.69	3.89	3.99	4.08	4.17	4.26	4.35	4.76	4.92	5.14	5.50	6.15
6.0	3.00	3.29	3.35	3.42	3.67	4.02	4.24	4.35	4.45	4.55	4.65	4.74	5.20	5.37	5.61	6.00	6.71
6.5	3.25	3.56	3.63	3.71	3.98	4.36	4.60	4.71	4.82	4.93	5.03	5.14	5.63	5.81	6.08	6.50	7.27
7.0	3.50	3.83	3.91	3.99	4.29	4.70	4.95	5.07	5.19	5.31	5.42	5.53	6.06	6.26	6.55	7.00	7.83
7.5	3.75	4.11	4.19	4.28	4.59	5.03	4.20	5.43	5.56	5.69	5.81	5.93	6.50	6.71	7.02	7.50	8.39
8.0	4.00	4.38	4.47	4.56	4.90	5.37	5.66	5.80	5.93	6.07	6.20	6.32	6.93	7.16	7.48	8.00	8.94
8.5	4.25	4.66	4.75	4.85	5.21	5.70	6.01	6.16	6.30	6.45	6.58	6.72	7.36	7.60	7.95	8.50	9.50
9.0	4.50	4.93	5.03	5.13	5.51	6.04	6.36	6.52	6.67	6.82	6.97	7.12	7.79	8.05	8.42	9.00	10.06
9.5	4.75	5.20	5.31	5.42	5.82	6.37	6.72	6.88	7.05	7.20	7.36	7.51	8.23	8.50	8.89	9.50	10.62
10.0	5.00	5.48	5.59	5.70	6.12	6.71	7.07	7.25	7.42	7.58	7.75	7.91	8.66	8.94	9.35	10.00	11.18
12.0	6.00	6.57	6.71	6.84	7.35	8.05	8.49	8.69	8.90	9.10	9.30	9.49	10.39	10.73	11.22	12.00	13.42
15.0	7.50	8.22	8.39	8.55	9.19	10.06	10.61	10.87	11.12	11.37	11.62	11.86	12.99	13.42	14.03	15.00	16.77

VARI SPRAY HEAD ORIFICE SIZE

ORIFICE SIZE	SPRAYING SYSTEMS SIZE	COLOR	ORIFICE CODE
1.00 mm	02.0	Dark Brown	AL106-180060
1.05	02.2	Pink	AL106-180061
1.10	02.5	Red	AL106-180062
1.15	02.7	Lilac	AL106-180063
1.20	03.0	Bright Yellow	AL106-180064
1.25	03.5	Light Green	AL106-180065
1.30	03.8	Orange	AL106-180066
1.35	04.0	Blue	AL106-180067
1.40	04.5	Beige	AL106-180068
1.45	04.8	Dark Yellow	AL106-180069
1.50	05.0	Light Blue	AL106-180070
1.55	05.5	White	AL106-180071
1.60	06.0	Black	AL106-180072
1.65	06.5	Purple	AL106-180073
1.70	07.5	Brown	AL106-180074
1.75	08.5	Gray	AL106-180075
1.80	09.0	Dark Green	AL106-180076

THEORETICAL SPRAY COVERAGE (INCHES)

SPRAY ANGLE°	DISTANCE FROM THE NOZZLE ORIFICE										SPRAY PATTERN	SPRAY ANGLE	% IMPACT/SQ. IN. OF THEORETICAL IMPACT*	
	2"	4"	6"	8"	10"	12"	15"	18"	24"	30"	36"	FAN	15	30%
15	.5"	1.1"	1.6"	2.1"	2.6"	3.2"	3.9"	4.7"	6.3"	7.9"	9.5"	FAN	25	18%
25	.9"	1.8"	2.7"	3.5"	4.4"	5.3"	6.6"	8"	10.6"	13.3"	15.9"	FAN	40	12%
40	1.5"	2.9"	4.4"	5.8"	7.3"	8.7"	10.9"	13.1"	17.5"	21.8"	26.2"	FAN	50	10%
50	1.9"	3.7"	5.6"	7.5"	9.3"	11.2"	14"	16.8"	22.4"	28"	33.6"	FAN	65	7%
65	2.5"	5.1"	7.6"	10.2"	12.7"	15.3"	19.2"	22.9"	30.5"	38.2"	45.8"			

NOZZLE

* AT 12" (30 CM) DISTANCE FROM THE THEORETICAL IMPACT OF SPRAYING WATER
Impact Force (lbs.) = .0526 x GPM x √ PSI

$$\text{Nozzle \#} = \text{GPM} \times \sqrt{\frac{4000}{\text{PSI}}}$$

$$\text{GPM} = \text{Nozzle \#} \times \sqrt{\frac{\text{PSI}}{4000}}$$

$$\text{PSI} = (\text{Nozzle \#} / \text{GPM})^2 \times 4000$$

Information Page



HOW TO READ AR NORTH AMERICA PUMP NUMBERS

SUFFIX MEANINGS

SERIES OF PUMPS	RPM RATINGS	SHAFT SIZES	UNLOADER CODES
XP XT XB XM SJ RK XJ XW BK SX	A = 1750 RPM V = 3400 RPM RK, SX, XW, XM, XR, XT = 1450 RPM XP, XB = 3400 RPM	N = Natural Shaft 24mm solid shaft E = Electric Shaft 5/8", 1-1/8" hollow shaft D = Direct Gas Drive Shaft 3/4", 1", 7/8" hollow shaft	M2 = Minimatic C2 = Gymatic VR = VR35

PUMP HEAD TYPES
Anodized Aluminum B = Forged Brass (XTA2G15EBA-F8) H = Nickel Plated (RK1528HN)
CONNECTING RODS
A = Aluminum (RKV4G30AD-F24)
GEAR BOXES
CR = Gear Box (RKA4G30N-CR)

FLANGE TYPES
F7 = Flange for XTV, XJV Series "D" Version for Close Coupling to Gas Engine (3/4" I.D. Shaft).
F8 = Flange for XTA, XTV, XJV Series "E" Version for Close Coupling to NEMA 56 - C Motors (5/8" I.D. Shaft).
F14 = Bell Housing and Flexible Coupling Set for XRCA Series for NEMA 182-184 (1-1/8" I.D. Shaft).
F15 = Bell Housing and Flexible Coupling Set for XRCA Series for NEMA 213-215 (1-3/8" I.D. Shaft).
F17 = Flange for RKA, XRCA Series "E" Version for Close Coupling to NEMA 182-184.
F23 = 5/8" Hollow Shaft Close Couple to XMV Pump.
F24 = Flange for RKV, XRCV, XMV Series "D" Version for Gas Engine (1" I.D. Shaft).
F25 = Flange for XMV Series "D" Version for Gas Engine (3/4" I.D. Shaft).
F27 = Flange for XJW Series "D" Version for Vertical Gas Engine (7/8" I.D. Shaft).
F33 = NEMA 56-C Flange for XM Series "E" Version (5/8" I.D. Shaft).
F35 = Flange for GRKV Series "V" Version for Tapered Gas Engines (1" I.D. Shaft).

AR PUMP CARE

- To prevent freezing use Environmentally Friendly or R.V. Antifreeze. (Always use for winter storage.)
- Change oil every 3-5 months or every 500 hours of operation (initial break-in oil change after first fifty hours).
DO NOT change oil in the SJ & XJ Series Pumps.
- Flush water valves and detergent injectors with plain water on a regular basis after use.
- Use Line Strainer, 50 mesh minimum.
- Never store pump with water in it.
- Consult local service dealer or AR North America for chemical usage.

HELPFUL CONVERSIONS

VOLUME & WEIGHT	TEMPERATURE CONVERSION:	Length
Gal x 3.785 = Liters	F° = 1.8 (C° + 17.78) C° = .555 (F° - 32)	.001 in. x 25.4 = Microns
Gal x 128 = Ounces	TORQUE CONVERSION:	Inches x 25.4 = MM
Gal x 231 = Cubic Inches	NM x .7375 = ft/lbs of torque	MM x .03937 = Inches
Gal x 8.3453 = Pounds	NM x 8.85 = in/lbs of torque	
Ltr x 61.02 = Cubic Inches	Horsepower	Nozzle
Ltr x 33.82 = Ounces	$\frac{\text{GPM} \times \text{PSI}}{1457} = \text{Elec. Brake HP}$	Nozzle # = GPM $\sqrt{\frac{4000}{\text{PSI}}}$
Ltr x .2642 = Gallons	$\frac{\text{GPM} \times \text{PSI}}{1714} = \text{Hydraulic HP}$	GPM = Nozzle # $\sqrt{\frac{\text{PSI}}{4000}}$
Ltr x 1000 = CM ²	$\frac{\text{GPM} \times \text{PSI}}{1100} = \text{Gasoline HP (Industrial Grade)}$	PSI = 4000 x $\left(\frac{\text{GPM}}{\text{Nozzle \#}}\right)^2$
ML (CC) x .0338 = Ounces	$\frac{\text{GPM} \times \text{PSI}}{900} = \text{Gasoline HP (Standard Grade)}$	
Gram x .03527 = Ounces		
PSI x .0689 = Bar		
Bar x 14.5 = PSI		
In. HG x .4912 = PSI		
In. H ₂ O x .8226 = In. HG		

Warranty



LIMITED WARRANTY

Annovi Reverberi (A.R.) Cam Shaft Plunger Pumps are warranted for a period of five years and Axial Radial Pumps are warranted for a period of one year to the original purchaser. Electric Pressure Washers are warranted for a period of one year to the original purchaser. This is from the date shipped from factory or U.S. Warehouse. **AR, ArrowLine** and **GF** accessories are warranted for a period of 90 days.

Warranty covers manufacturing defects or workmanship; that may develop under normal use and service in a manner up to the directions and usage recommended by the manufacturer.

Warranty does not apply to misuse or when pump or accessory is altered or used in excess of recommended speeds, pressures, temperatures or handling fluids not suitable for pump or accessory material construction. Warranty does not apply to normal wear (*such as but not limited to: seals/packings, valves, plungers and sealing o-rings*), freight damage, freezing damage or damage caused by parts or accessories not supplied by AR North America, Inc.

Liability of manufacturer for warranty is limited to repair or replacement of parts only at the option of the manufacturer when such products are found to be of original defect or workmanship at the time it was shipped from factory. This warranty is in lieu of all other warranties, expressed or implied, including any warranty of merchantability and of any and all other obligations or liabilities on the part of the manufacturers or equipment.