

TYPE E CAMLOCK



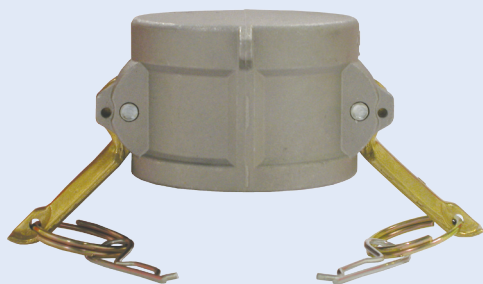
▼ Part#	Size	Thread	Material
90.394.034	¾"	Male barb x male coupler	Aluminum
90.394.100	1"	Male barb x male coupler	Aluminum
90.394.114	1 ¼"	Male barb x male coupler	Aluminum
90.394.112	1 ½"	Male barb x male coupler	Aluminum
90.394.200	2"	Male barb x male coupler	Aluminum
90.394.300	3"	Male barb x male coupler	Aluminum

TYPE F CAMLOCK



▼ Part#	Size	Thread	Material
90.395.034	¾"	Male coupler X MPT	Aluminum
90.395.100	1"	Male coupler X MPT	Aluminum
90.395.114	1 ¼"	Male coupler X MPT	Aluminum
90.395.112	1 ½"	Male coupler X MPT	Aluminum
90.395.200	2"	Male coupler X MPT	Aluminum
90.395.300	3"	Male coupler X MPT	Aluminum

TYPE DC CAMLOCK



▼ Part#	Size	Thread	Material
90.396.034	¾"	Dust Cap	Aluminum
90.396.100	1"	Dust Cap	Aluminum
90.396.114	1 ¼"	Dust Cap	Aluminum
90.396.112	1 ½"	Dust Cap	Aluminum
90.396.200	2"	Dust Cap	Aluminum
90.396.300	3"	Dust Cap	Aluminum

TYPE DP CAMLOCK



▼ Part#	Size	Thread	Material
90.397.034	¾"	Dust Plug	Aluminum
90.397.100	1"	Dust Plug	Aluminum
90.397.114	1 ¼"	Dust Plug	Aluminum
90.397.112	1 ½"	Dust Plug	Aluminum
90.397.200	2"	Dust Plug	Aluminum
90.397.300	3"	Dust Plug	Aluminum