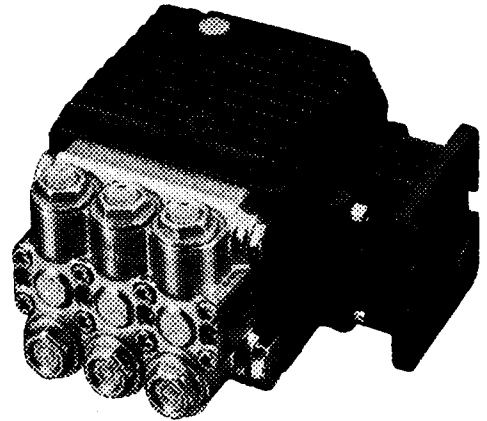


FEATURES

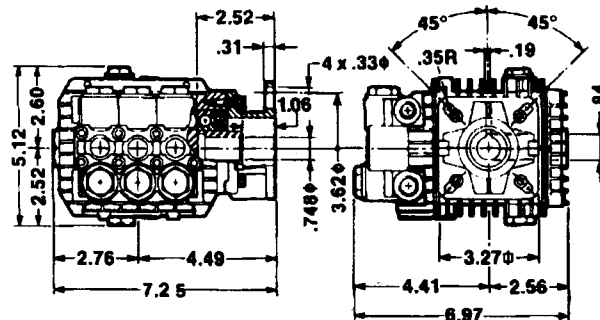
- Forged brass manifold with exclusive lifetime warranty
- Die cast, anodized aluminum, oil-bath crankcase
- Solid ceramic plungers with continuously lubricated packings
- The original Interpump unitized, stainless steel, K01 inlet and outlet valves
- Ideal for all general cleaning applications
- Comes standard with SAE J609 gasoline engine mounting flange
- Also available in "L" left-handed versions

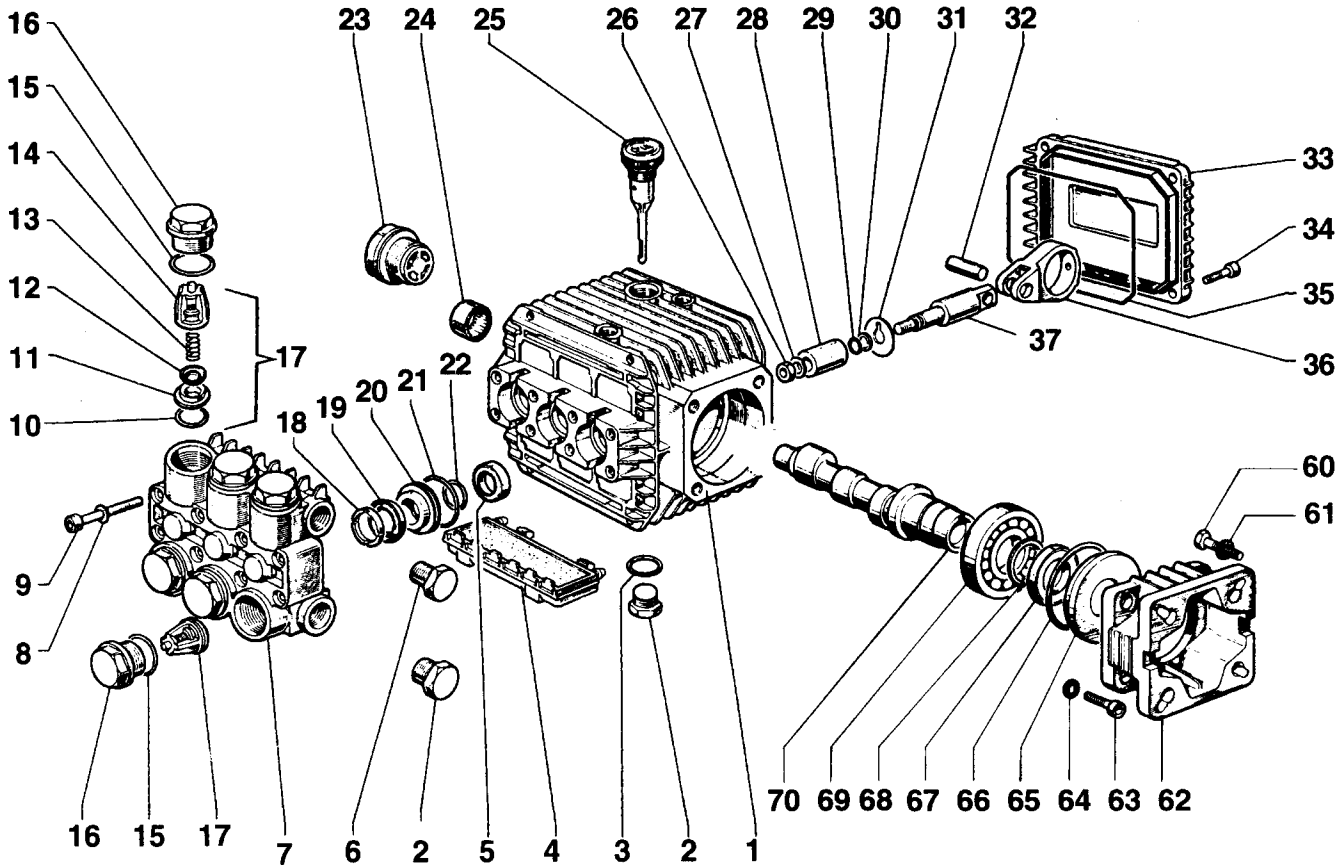


SPECIFICATIONS

| Pump Model | TT9061GBF | TT9071GBF | TT1540GBF | TT2028GBF | TT2035GBF |
|----------------------------|--------------------------|------------|------------|------------|-----------|
| Maximum Volume | 2.11 GPM | 2.8 GPM | 4.0 GPM | 2.8 GPM | 3.5 GPM |
| Maximum Discharge Pressure | 1500 PSI | | | 2000 PSI | |
| Maximum Pump Speed | 3400 RPM | | | | |
| Maximum Inlet Pressure | 125 PSI | | | | |
| Maximum Inlet Vacuum | 3 ft. water (2.6 in. Hg) | | | | |
| Bore | .591 in. / 15 mm | | | | |
| Stroke (in./mm) | .197 / 5 | .260 / 6.6 | .370 / 9.4 | .260 / 6.6 | .315 / 8 |
| Crankcase Oil Capacity | 11.2 oz. | | | | |
| Maximum Fluid Temperature | 165°F | | | | |
| Inlet Port Thread | 3/8-19 BSPP-F | | | | |
| Discharge Port Thread | 1/4-19 BSPP-F | | | | |
| Shaft Diameter | 3/4 in. / 19 mm | | | | |
| Weight | 11.4 lbs. | | | | |
| Dimensions | 7.2 x 7.2 x 5.5 in. | | | | |

DIMENSIONAL DRAWING





PARTS LIST

| ITEM | PART NO. | DESCRIPTION | KIT | QTY. | ITEM | PART NO. | DESCRIPTION | KIT | QTY. | ITEM | PART NO. | DESCRIPTION | KIT | QTY. |
|------|------------|-----------------------|-----|------|------|------------|---------------------|----------|------|------|------------|-----------------------|-----|------|
| 1. | 51.0106.22 | Crankcase | 1 | | 17. | 36.7032.01 | Valve Assembly | 1 | 6 | 35. | 90.3917.00 | O-Ring | 1 | |
| 2. | 98.2100.00 | Plug, 3/8-BSPP | 2 | | 18. | 51.1000.51 | Head Ring | 96.97 | 3 | 36. | 51.0300.22 | Connecting Rod | 3 | |
| 3. | 90.3833.00 | O-Ring, .549 x .103 | 1 | | 19. | 90.2620.00 | Packing | 96,97 | 3 | 37. | 51.0500.56 | Piston Guide | 3 | |
| 4. | 51.2091.02 | Protector | 1 | | 20. | 51.0800.70 | Packing Retainer | 86,96 | 3 | 60. | 99.2730.00 | Screw, 5/16" | 4 | |
| 5. | 90.1565.00 | Oil Seal | 83 | 3 | 21. | 90.3604.00 | O-Ring, .989 x .070 | 86,96,97 | 3 | 61. | 96.7014.00 | Washer, M8.4, Schnorr | 4 | |
| 6. | 98.2041.00 | Plug | 1 | | 22. | 90.3835.00 | O-Ring, .594 x .103 | 86,96,97 | 3 | 62. | 10.0346.22 | Flange | 1 | |
| 7. | 51.1200.41 | Manifold, Brass | 1 | | 23. | 97.5968.00 | Sight Gauge | | 1 | 63. | 99.1867.00 | Screw, M6 x 18 | 4 | |
| | 51.1200.22 | Manifold, Aluminum | | | 24. | 91.8015.00 | Needle Bearing | | 1 | 64. | 96.6938.00 | Washer, M6.4, Schnorr | 4 | |
| 8. | 96.6938.00 | Washer, M6.4, Schnorr | 12 | | 25. | 98.2103.00 | Oil Dip Stick | | 1 | 65. | 50.2115.51 | Spacer | 1 | |
| 9. | 99.1943.00 | Screw, M6 x 40 | 12 | | 26. | 92.2216.00 | Nut, M8 | | 3 | 66. | 90.4097.00 | O-Ring, 2.187 x .139 | 1 | |
| 10. | 90.3841.00 | O-Ring, .674 x .103 | 1 | 6 | 27. | 96.7008.00 | Washer, M8 | | 3 | 67. | 90.1644.00 | Oil Seal | 1 | |
| 11. | 36.2003.66 | Valve Seat | 1 | 6 | 28. | 51.0400.09 | Plunger (15 mm) | | 3 | 68. | 90.0667.00 | Snap Ring | 1 | |
| 12. | 36.2001.76 | Valve Plate | 1 | 6 | 29. | 90.3572.00 | O-Ring, .208 x .070 | | 3 | 69. | 20.2835.21 | Bearing | 1 | |
| 13. | 94.7376.00 | Spring | 1 | 6 | 30. | 90.5022.00 | Back-up Ring | | 3 | 70. | 51.0210.35 | Crankshaft (TT9061) | 1 | |
| 14. | 36.2002.51 | Valve Cage | 1 | 6 | 31. | 96.7070.00 | Washer, Flinger | | 3 | | 51.0211.35 | Crankshaft (TT2028) | | |
| 15. | 90.3847.00 | O-Ring, .797 x .103 | 84 | 6 | 32. | 97.7310.00 | Connecting Rod Pin | | 3 | | 51.0219.65 | Crankshaft (TT1540) | | |
| 16. | 98.2218.00 | Valve Cap | 84 | 6 | | | | | | | 51.0218.35 | Crankshaft (TT2035) | | |
| | | | | | 33. | 51.1600.22 | Crankcase Cover | | 1 | | | | | |
| | | | | | 34. | 99.1867.00 | Screw | | 4 | | | | | |

REPAIR KITS

| KIT NO. | 1 | 83 | 84 | 86 | 96 | 97 |
|--------------------------------------|--------------------------|----|--------|------------|--------------------|----------------|
| ITEM NO.s INCLUDED IN KIT | 10, 11, 12, 6, 7, 8 (17) | 5 | 15, 16 | 20, 21, 22 | 18, 19, 20, 21, 22 | 18, 19, 21, 22 |
| NUMBER OF ASSEMBLIES IN KIT | 6 | 3 | 6 | 3 | 1 | 3 |
| NUMBER OF CYLINDERS KIT WILL SERVICE | 3 | 3 | 3 | 3 | 1 | 3 |

TORQUE SPECS*

| Position | Ft.-lbs. |
|----------|----------|
| 2 | 29.4 |
| 6 | 14.7 |
| 9 | 8.8 |
| 16 | 33.1 |
| 23 | 13.2 |
| 26 | 11.0 |
| 34 | 7.3 |
| 38 | 22.1 |
| 40 | 7.3 |
| 49 | 14.7 |
| 52 | 7.3 |

*Decrease torque by 20% if threads are lubricated.