

JETTING/INTERMITTENT PUMPS

MK Series, Triplex Plunger Pump with gear reducer options available for 1500 or 1800 RPM. Energized packing design and patent pending power end design all add to the strength and durability of this innovative pump series.

**Max. Inlet Pressure: 45 PSI Max. Fluid Temperature: *140° F Inlet Port Thread: 2" NPT-F Flange
Discharge Port Thread: 1" NPT-F Shaft Diameter: 1.969 in./55 mm Pump Dimensions: 33.3" x 28.2" x 13.5"
Crankcase Oil Capacity: 466.5 oz. Use GP Series 100 Oil, (see page 33) Stroke: 2.835 in./72 mm
Product Group: V**

	GPM	PSI	BORE	HP	SHP WGHT
MK40	40.0 GPM	5800 PSI	1.575 in./40 mm	161.6 EBHP	931 lbs.
MK45	50.0 GPM	4350 PSI	1.772 in./45 mm	149.6 EBHP	931 lbs.
MK50	62.0 GPM	3625 PSI	1.969 in./50 mm	154.2 EBHP	931 lbs.

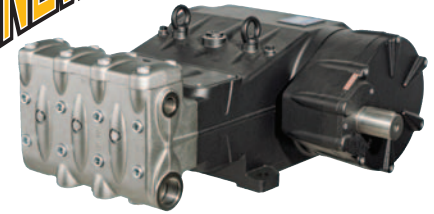
Inlet Port Thread: 3" NPT-F Flange Discharge Port Thread: 1 1/4" NPT-F

MK55	75.0 GPM	2900 PSI	2.165 in./55 mm	153.0 EBHP	931 lbs.
MK60	90.0 GPM	2465 PSI	2.362 in./60 mm	154.8 EBHP	931 lbs.
MK65	107.0 GPM	2175 PSI	2.559 in./65 mm	160.3 EBHP	931 lbs.

LHS Series

	GPM	PSI	RPM	BORE	HP	MIN INLET	SHP WGHT
LHS50	77.4 GPM	3300 PSI	1750 RPM	1.969 in./50 mm	175 HP	5.5 PSI	800 lbs.
LHS55	93.8 GPM	2750 PSI	1750 RPM	2.165 in./55 mm	175 HP	5.8 PSI	800 lbs.
LHS60	112.0 GPM	2320 PSI	1750 RPM	2.362 in./60 mm	175 HP	6.1 PSI	800 lbs.

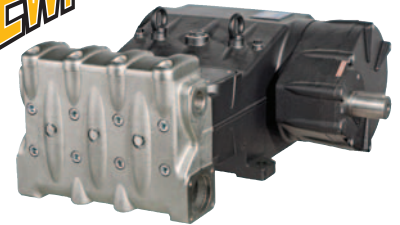
NEW!



MK45

Gearbox may be positioned as shown or at 45°, 90°, 135° or 180° from position shown.

NEW!



MK60

Gearbox may be positioned as shown or at 45°, 90°, 135° or 180° from position shown.



LHS50

Gearbox may be positioned as shown or at 45°, 90°, 135° or 180° from position shown.

**Please consult technical guide or GP Sales Representative for temperature/Inlet Pressure information.*