

# GENERAL INDUSTRIAL PUMPS

MS Series, Triplex Plunger Pump, A heavy-duty industrial pump with a nickel-treated, spheroidal cast iron manifold

**Max. Inlet Pressure: 45 PSI Max. Fluid Temperature: \*140° F Inlet Port Thread: 2 1/2" NPT-F**  
**Discharge Port Thread: 1 1/4" NPT-F Shaft Diameter: 2.758 in./70 mm Pump Dimensions: 27.7" x 23.8" x 11.9"**  
**Crankcase Oil Capacity: 333 oz. Use GP Series 220 Oil, (see page 33) Stroke: 2.362 in./60 mm**  
**Product Group: V**

	GPM	PSI	RPM	BORE	HP	MIN INLET	SHP WGHT
MS36	35.9 GPM	4350 PSI	750 RPM	1.417 in./36 mm	107.0 EBHP	6.5 PSI	570 lbs.
MS40	44.4 GPM	3500 PSI	750 RPM	1.575 in./40 mm	106.4 EBHP	6.8 PSI	570 lbs.
MS45	56.3 GPM	2750 PSI	750 RPM	1.772 in./45 mm	106.0 EBHP	7.1 PSI	570 lbs.
MS50	69.5 GPM	2250 PSI	750 RPM	1.969 in./50 mm	107.1 EBHP	7.6 PSI	570 lbs.
MS55	84.0 GPM	1800 PSI	750 RPM	2.165 in./55 mm	103.6 EBHP	7.8 PSI	570 lbs.

MS Series, Triplex Plunger Pump with gear reducer option available for 1500 or 1800 RPM. A heavy-duty industrial pump with a nickel-treated, spheroidal cast iron manifold

**Max. Inlet Pressure: 45 PSI Max. Fluid Temperature: \*140° F Inlet Port Thread: 2 1/2" NPT-F**  
**Discharge Port Thread: 1 1/4" NPT-F Shaft Diameter: 1.969 in./50 mm Pump Dimensions: 27.7" x 23.8" x 11.7"**  
**Crankcase Oil Capacity: 333 oz. Use GP Series 220 Oil, (see page 33) Stroke: 2.362 in./60 mm**  
**Product Group: V**

	GPM	PSI	BORE	HP	MIN INLET	SHP WGHT
MS36	35.4 GPM	4350 PSI	1.417 in./36 mm	105.5 EBHP	6.5 PSI	620 lbs.
MS40	43.9 GPM	3500 PSI	1.575 in./40 mm	105.2 EBHP	6.8 PSI	620 lbs.
MS45	55.5 GPM	2750 PSI	1.772 in./45 mm	104.5 EBHP	7.1 PSI	620 lbs.
MS50	68.7 GPM	2250 PSI	1.969 in./50 mm	105.9 EBHP	7.6 PSI	620 lbs.
MS55	83.0 GPM	1800 PSI	2.165 in./55 mm	102.3 EBHP	7.8 PSI	620 lbs.

MK Series, Triplex Plunger Pump with gear reducer options available for 1500 or 1800 RPM. Energized packing design and patent pending power end design all add to the strength and durability of this innovative pump series.

**Max. Inlet Pressure: 45 PSI Max. Fluid Temperature: \*140° F Inlet Port Thread: 2" NPT-F Flange**  
**Discharge Port Thread: 1" NPT-F Shaft Diameter: 1.969 in./55 mm Pump Dimensions: 33.3" x 28.2" x 13.5"**  
**Crankcase Oil Capacity: 466.5 oz. Use GP Series 100 Oil, (see page 33) Stroke: 2.835 in./72 mm**  
**Product Group: V**

	GPM	PSI	BORE	HP	SHP WGHT
MK40	40.0 GPM	5800 PSI	1.575 in./40 mm	161.6 EBHP	931 lbs.
MK45	50.0 GPM	4350 PSI	1.772 in./45 mm	149.6 EBHP	931 lbs.
MK50	62.0 GPM	3625 PSI	1.969 in./50 mm	154.2 EBHP	931 lbs.

**Inlet Port Thread: 3" NPT-F Flange Discharge Port Thread: 1 1/4" NPT-F**

MK55	75.0 GPM	2900 PSI	2.165 in./55 mm	153.0 EBHP	931 lbs.
MK60	90.0 GPM	2465 PSI	2.362 in./60 mm	154.8 EBHP	931 lbs.
MK65	107.0 GPM	2175 PSI	2.559 in./65 mm	160.3 EBHP	931 lbs.

LH Series, Triplex Plunger Pump with Internal Gear Reduction.

**Max. Inlet Pressure: 45 PSI Max. Fluid Temperature: \*140° F Inlet Port Thread: 80 mm BSP-F Flange**  
**Discharge Port Thread: 36 mm BSP-F Flange Shaft Diameter: 1.969 in./50 mm Pump Dimensions: 36.3" x 25.8" x 13.5"**  
**Crankcase Oil Capacity: 467 oz. Use GP Series 220 Oil, (see page 33) Stroke: 3.546 in./90 mm Product Group: V**

	GPM	PSI	RPM	BORE	HP	MIN INLET	SHP WGHT
LH4015	45.4 GPM	4350 PSI	1500 RPM	1.575 in./40 mm	135.3 EBHP	5.1 PSI	800 lbs.
LH4017	49.7 GPM	4350 PSI	1750 RPM	1.575 in./40 mm	148.1 EBHP	5.1 PSI	800 lbs.
LH4515	57.6 GPM	3500 PSI	1500 RPM	1.772 in./45 mm	138.1 EBHP	5.4 PSI	800 lbs.
LH4517	62.9 GPM	3500 PSI	1750 RPM	1.772 in./45 mm	150.8 EBHP	5.4 PSI	800 lbs.
LH5015	71.1 GPM	2900 PSI	1500 RPM	1.969 in./50 mm	141.2 EBHP	5.5 PSI	800 lbs.
LH5017	77.4 GPM	2900 PSI	1750 RPM	1.969 in./50 mm	153.7 EBHP	5.5 PSI	800 lbs.
LH5515	86.1 GPM	2300 PSI	1500 RPM	2.165 in./55 mm	135.6 EBHP	5.8 PSI	800 lbs.
LH5517	93.8 GPM	2300 PSI	1750 RPM	2.165 in./55 mm	147.8 EBHP	5.8 PSI	800 lbs.
LH6015	102.0 GPM	2050 PSI	1500 RPM	2.362 in./60 mm	143.2 EBHP	6.1 PSI	800 lbs.
LH6017	112.0 GPM	2050 PSI	1750 RPM	2.362 in./60 mm	157.3 EBHP	6.1 PSI	800 lbs.

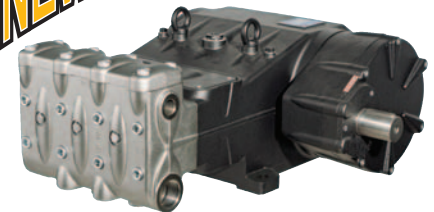
*\*Please consult technical guide or GP Sales Representative for temperature/Inlet Pressure information.*

*Please refer to pages 48-51 for fittings, safety devices and other accessories. Performances refer to theoretical delivery with 100% volumetric efficiency. Under normal operating conditions, pump volumetric efficiency is over 95%. Please contact our technical staff in case of continuous, heavy-duty, or special applications.*



*Gearbox may be positioned as shown or at 45°, 90°, 135° or 180° from position shown.*

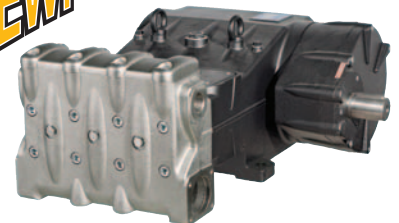
**NEW!**



**MK45**

*Gearbox may be positioned as shown or at 45°, 90°, 135° or 180° from position shown.*

**NEW!**



*Gearbox may be positioned as shown or at 45°, 90°, 135° or 180° from position shown.*



*Gearbox may be positioned as shown or at 45°, 90°, 135° or 180° from position shown.*