

Instructions for Adjusting AR Minimatic 4/B

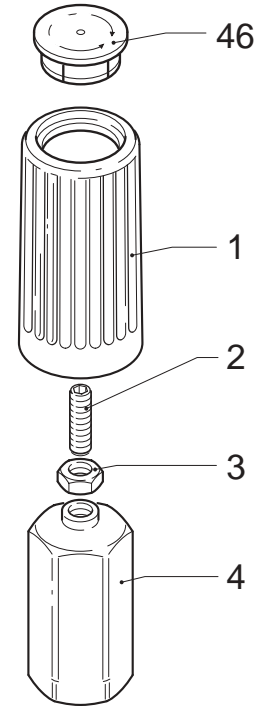


Please follow these easy steps to adjust the pressure:

- Step 1: Remove black cap (pos. #46)
- Step 2: Loosen nut (pos. #3) with 10mm wrench.
- Step 3: Turn brass (pos. #4) clockwise until it stops.
- Step 4: Start pump, watch pressure gauge and turn (pos. #2) using 3mm hex clockwise until recommended/rated pressure is obtained. Line pressure will be approximately 200 psi less than actual head pressure. **DO NOT** set line pressure to rated.
- Step 5: Release trigger and make sure there is minimal spike (200-300 psi) (Repeat this step two or three times).
- Step 6: Tighten nut (pos. #3) down against (pos. #4).
- Step 7: Replace black cap (pos. #46)

NOTE: Now pressure can be decreased by turning black knob counterclockwise, but the pressure cannot be increased to a rating higher than was set.

We recommend this procedure be done by a qualified high pressure pump service technician. Failure to properly adjust can cause serious damage to equipment and body.



AR1540740

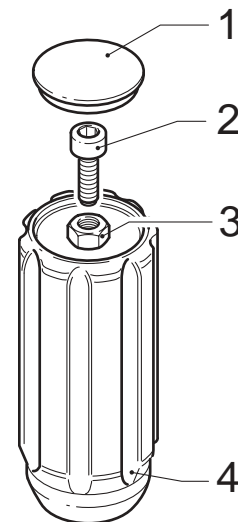
Nut holder for adjusting Minimatic Unloader

Instructions for Adjusting AR Gymatic Unloader Valves

Please follow these easy steps to adjust the pressure:

- Step 1: Remove black cap (pos. #1) from knob.
- Step 2: Loosen bolt (pos. #2) with 6mm hex wrench.
- Step 3: Loosen nut (pos. #3) to top of pos. #2 (bolt).
- Step 4: Turn the black knob (pos. #4) clockwise until it stops.
- Step 5: Start pump, watch pressure gauge and turn pos. #2 (bolt) until recommended/rated pressure is obtained.
- Step 6: Release trigger and make sure there is minimal spike (300-400 psi) (Repeat this step two or three times)
- Step 7: Spin pos. #3 (nut) down. While holder pos. #2 (bolt) in place with hex wrench, use special tool (AR1560590) Or extended 13mm socket wrench to hand tighten Pos. #3 (nut) against pos. #4 (black knob).
- Step 8: Replace pos. #1 (black cap).

NOTE: Now pressure can be decreased by turning black knob counterclockwise, but the pressure cannot be increased to a rating higher than what max is set at by technician.



AR1560590

Nut holder for adjusting Gymatic Unloader