

# GAMMA-62/CC GAMMA-62/GR

## *Three Cylinder Plunger Pumps*

The GAMMA-62 is a three cylinder plunger pump of anodized aluminum construction with ceramic plungers. Liquid handling parts are anodized aluminum, brass and stainless steel.

The GAMMA-62/CC is driven by a 1-3/8", six-splined, male PTO thru shaft. It is also available as the GAMMA-62/GR with a gear reduction to fit 8-13 HP gasoline engines, or as the GAMMA 62/GR-18 with a gear reduction for 16-20 HP engines.

A control unit is not included. Please consult the UDOR U.S.A. price list for an appropriate unit.

GAMMA-62/CC



GAMMA-62/GR



GAMMA-62/GR-18

### SPECIFICATIONS

|                                 |                               |
|---------------------------------|-------------------------------|
| Maximum RPM .....               | 600                           |
| Maximum Flow .....              | 16 GPM                        |
| Maximum Pressure                |                               |
| GAMMA-62/CC .....               | 1000 PSI                      |
| GAMMA-62/GR                     |                               |
| w/ 8-9 HP .....                 | 350 PSI                       |
| w/ 11-13 HP .....               | 500 PSI                       |
| GAMMA-62/GR-18 (16-20 HP) ..... | 1000 PSI                      |
| Hose Barb Ports                 |                               |
| In .....                        | 1-1/4"                        |
| Out .....                       | (2) 3/4" FNPT & (2) 3/8" FNPT |
| Dimensions                      |                               |
| GAMMA-60/CC .....               | L-12.75" x W-15.75" x H-7.5"  |
| GAMMA-60/GR .....               | L-12.75" x W-19.5" x H-7.5"   |
| GAMMA-60/GR-18 .....            | L-12.75" x W-19.5" x H-7.5"   |
| Weight                          |                               |
| GAMMA-60/CC .....               | 50 lbs.                       |
| GAMMA-60/GR .....               | 65 lbs.                       |
| GAMMA-60/GR-18 .....            | 70 lbs.                       |

### UDOR U.S.A., INC.

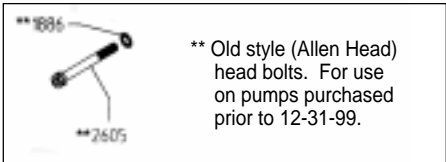
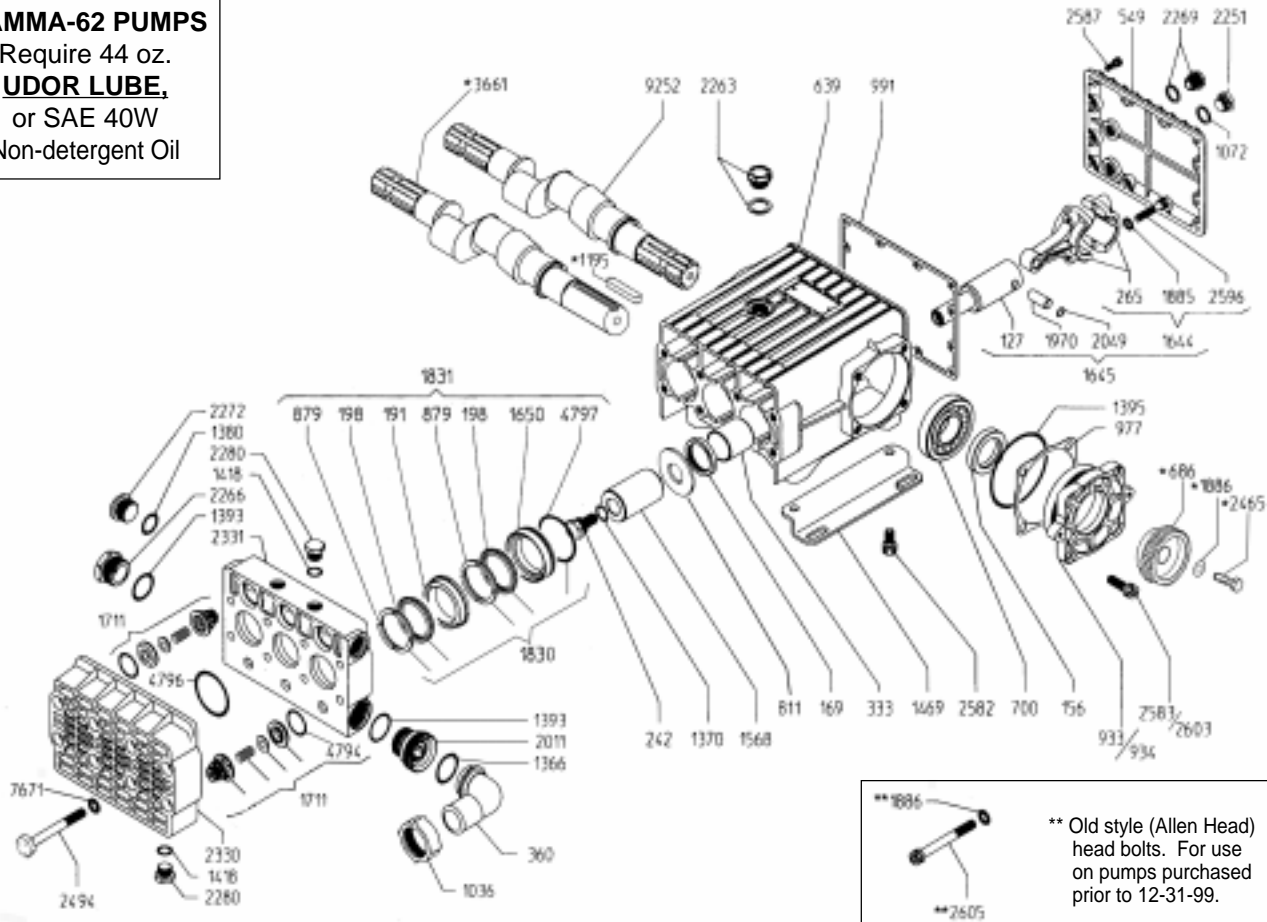
500 Apollo Drive  
Lino Lakes, MN 55014  
TEL. (651) 785-0666  
FAX. (800) 732-2670  
www.udorusa.com

# GAMMA-62/CC & GAMMA-62/GR

## Exploded View Diagram and Parts List

### GAMMA-62 PUMPS

Require 44 oz.  
**UDOR LUBE,**  
or SAE 40W  
Non-detergent Oil



\*\* Old style (Allen Head) head bolts. For use on pumps purchased prior to 12-31-99.

| Ref #  | Part #  | Description                  | Qty. | Ref #   | Part #  | Description                          | Qty. |
|--------|---------|------------------------------|------|---------|---------|--------------------------------------|------|
| 127    | 0014.17 | Plunger Guide                | 3    | 1650    | 1221.23 | Low Pressure Seal Retainer           | 3    |
| 156    | 0007.02 | Seal, 35 x 55 x 10           | 2    | 1711    | 6006.13 | Valve Assembly                       | 6    |
| 169    | 0007.26 | Seal, 35 x 47 x 7            | 3    | 1830    | 6030.10 | Seal Kit - Standard                  | 1    |
| 191    | 0023.41 | Spacer Ring                  | 3    | 1831    | 6030.23 | Seal Kit - Complete w/Brass          | 3    |
| 198    | 0021.09 | High Pressure V-Packing      | 6    | 1885    | 1411.02 | Washer                               | 6    |
| 242    | 0102.11 | Plunger Bolt                 | 3    | ** 1886 | 1411.03 | Washer (Qty. 8 for Allen head bolts) | 1    |
| 333    | 0115.06 | Plunger Guide Bushing        | 3    | 1970    | 1502.12 | Wrist Pin                            | 3    |
| 360    | 0202.22 | Suction Elbow - BRASS        | 1    | 2011    | 1504.02 | Inlet Adapter                        | 1    |
| 549    | 0208.56 | Back Cover                   | 1    | 2049    | 1506.11 | Snap Ring                            | 6    |
| 639    | 0209.50 | Pump Body                    | 1    | 2251    | 1603.02 | Oil Plug                             | 1    |
| * 686  | 0213.34 | Drive Gear                   | 1    | 2263    | 1603.92 | Oil Cap - Vented                     | 1    |
| 700    | 0214.04 | Crank Bearing                | 2    | 2266    | 1603.30 | Plug - Inlet                         | 1    |
| 811    | 0301.49 | Slinger Ring                 | 3    | 2269    | 1603.33 | Oil Sight Glass                      | 1    |
| 879    | 0307.16 | Spreader Ring                | 6    | 2272    | 1603.40 | Plug - Discharge                     | 1    |
| 933    | 0501.B6 | Bearing Cap / PTO            | 2    | 2280    | 1603.51 | Plug                                 | 5    |
| * 934  | 0501.B7 | Bearing Cap / GR             | 1    | 2330    | 1604.55 | Head - Front                         | 1    |
| 977    | 0602.05 | Gasket                       | 2    | 2331    | 1604.56 | Head - Inner                         | 1    |
| 991    | 0602.51 | Gasket                       | 1    | * 2465  | 1804.07 | Bolt                                 | 1    |
| 1036   | 0604.13 | Suction Nut - BRASS          | 1    | 2494    | 1804.12 | Head Bolt(Hex Head, New Style)       | 8    |
| 1072   | 0605.09 | Aluminum Gasket              | 1    | 2582    | 1805.04 | Bolt, M10 x 20                       | 4    |
| * 1195 | 0801.18 | Shaft Key                    | 1    | 2583    | 1805.05 | Bolt, M10 x 30                       | 8    |
| 1366   | 1101.02 | O-Ring                       | 1    | 2587    | 1805.20 | Bolt, M6 x 16                        | 12   |
| 1370   | 1101.06 | Plunger Bolt O-Ring          | 3    | 2596    | 1805.23 | Bolt, M8 x 40                        | 6    |
| 1380   | 1101.25 | O-Ring                       | 2    | * 2603  | 1805.12 | Bolt                                 | 4    |
| 1393   | 1101.46 | O-Ring                       | 2    | ** 2605 | 1805.42 | Head Bolt (Allen Head, Old Style)    | 8    |
| 1395   | 1101.48 | O-Ring                       | 2    | * 3601  | 0002.82 | Crankshaft / GR                      | 8    |
| 1418   | 1101.55 | O-Ring                       | 5    | 4794    | 1101.15 | O-Ring                               | 6    |
| 1469   | 1202.34 | Mounting Rail                | 2    | 4796    | 1101.97 | O-Ring                               | 3    |
| 1568   | 1205.29 | Ceramic Plunger              | 3    | 4797    | 1101.98 | O-Ring                               | 3    |
| 1644   | 6000.28 | Connecting Rod Kit           | 3    | 7671    | 1403.09 | Head Bolt Washer                     | 8    |
| 1645   | 6000.29 | Connecting Rod Ass'y w/Guide | 3    | 9252    | 0002.81 | Crankshaft / PTO                     | 1    |

\* Parts for GAMMA-62/GR only

### PROTECT PUMPS FROM FREEZING

If freezing conditions exist, flush pump with a 50/50 mix of antifreeze and water