

UDOR PUMP - PURE MUSCLE!

ALLISON IRON HORSE PRESSURE WASHERS



CHEETAH



Most use a 19 lb. pump with aluminum connecting rods.

Ours is a 28 lb. pump with solid bronze connecting rods.

Expect ours to last 10 times longer

A TRUE 3,850 PSI **A TRUE 3,000 PSI**

@ or @

A TRUE 4.2 GPM **A TRUE 5.0 GPM**



CHEETAHS Start Quicker, Run Quieter & Last Longer

ELECTRIC START PURE MUSCLE

14 HP KOHLER with 3-year warranty

UDOR PUMP 4.2 GPM @ 4000 PSI 5.0 GPM @ 3000 PSI

Industrial Hose Reel with Non-Marking Hose

The New Hyde 51" Pivoting Nozzles Lance

Vibration Isolators between engine and base plate

Premium 13" Wheels

Integrated Tool Tray and Nozzle Holders

Engine Shuts Down if Pump Overheats

Aren't you tired of being fooled?

For years people have been buying what they thought was a **4 GPM @ 4000 PSI PRESSURE WASHER** with a 13 HP Honda

IMPOSSIBLE!

First of all there is not enough power in a 13 HP engine to produce this amount of water at this psi.

The math is as follows: GPM x PSI divided by 1100 is what is required in the way of gas engine horsepower.

~~\$2995.00~~

\$1695.00

#14404 - 4.0 GPM
#14305 - 5.0 GPM

BONUS BUCKS FOR CONTRACTORS ONLY

ADVANTAGE

ENVIROSPEC! 1-800-346-4876

GENERAL PUMP

TS2021
PLATED HEAD



5.6 @ 3500
\$521.12



ROTOMAX 3500 PSI
\$37.96

#1498 2.1-2.6 GPM
#1499 2.9-4.0 GPM
#1500 4.2-6.0 GPM



TURBO TEC
\$45.54

5,100 PSI
4.5 Noz. #2008
5.0 Noz. #2010
5.5 Noz. #2012
6.5 Noz. #2016
8.0 Noz. #2020

Dirt Killer
4700 PSI
\$97.88



HIGH PRESSURE FILTER
for Turbos #1510 **\$6.96**



P/N	NOZZLE
1481	3.5
482	4.0
483	4.5
484	5.5
485	6.0
486	7.0
487	8.0
488	10.0

STILETTO ROTOJET
\$68.85 \$64.96

(Includes filter)

(Shown with optional filter)

PART #	PSI	Nozzle
1969F	5100	4.0
1971F	5100	4.5
1973F	5100	5.0
1975F	5100	5.5
1977F	5100	6.0
1979F	5100	6.5
1981F	5100	7.5
1983F	5100	8.0

PART #	PSI	Nozzle
1554	5800	4.0
1555	5800	4.5
1556	5800	5.0
1557	5800	5.5
1558	5800	6.0
1559	5800	7.0
1560	5800	8.0
1561	5800	12.0



Sale Priced + You Can Use Your Bonus Bucks & Still Get FREE FREIGHT!

Easy Pull

HI-TECH
4100 Gun
GPM: 13.2
PSI: 4100 PSI
#1204 **\$39.62**



GIANT
21290C
GPM: 12
PSI: 5000 PSI
#2129 **\$22.84**



GENERAL/PA
YG5000C
GPM: 11
PSI: 5000 PSI
#1221 **\$24.62**



HI-TECH
HD1000C
GPM: 12
PSI: 4500 PSI
#1227 **\$23.83**

Our Most Popular
CHLORINE GUN

The popularity of this gun comes from it having a larger passageway which allows the chemical injector to draw more chemical.

ARROW LINE
AL-35
GPM: 8.0
PSI: 5000 PSI
#1695 **\$22.81**



HI-TECH
5000
GPM: 9
PSI: 5000 PSI
#1208 **\$22.62**



GENERAL/PA
YG5000
GPM: 11
PSI: 5000 PSI
#1220 **\$23.93**



ALLISON
501 Gun
GPM: 8
PSI: 4000 PSI
#1209 **\$16.12**



YG4000S
LENIER
GPM: 10 PSI: 4100 PSI
#1218 **\$27.77**



IRIDE GUN

OUR #1 SELLING GUN
GPM: 8
PSI: 4500 PSI
#1225 **\$18.74**



One of the most comfortable guns in the industry!

PREMIUM BRUSHES
10" #1451 **\$9.87**
18" #1452 **\$18.36**
24" #1453 **\$19.45**
Gutter #1459 **\$19.61**



18 HP KOHLER
20 AMP
Incl's Muffler
\$979.80
#1829



PACKING EXTRACTION KIT
For All Pumps
Incl's Slide Hammer
#1007 **\$59.77**

SUNTEC FUEL PUMP
A2VA7116
Industry Standard
#1399 **\$44.11**



7,500 PSI BALL VALVE
3/8" FTP
PLATED
#1305
\$17.94



18 HP VANGUARD
20 AMP
Incl's Muffler
\$957.23
#1732



GARDEN HOSE QUICK CONNECTS
Solid Brass
#1018 **\$4.74**



Voted the Industry's Best Web Site!

ADVANTAGE

ENVIROSPEC!

1-800-346-4876

GENERAL PUMP **\$358.51**
4.0 @ 4000 EZ4040G



UNBEATABLE PUMP PRICES

PREMIUM FILTER HIGH VOLUME
1" In/Out
1015 **\$34.95**



FREE FREIGHT!

11,000 PSI 'QC' O'RINGS
20 EA - 3/8"
#QOR8X **\$17.15**



VITON 'QC' O'RINGS
50 EA - 1/4"
#QOR4V **\$13.73**



11,000 PSI 'QC' O'RINGS
20 EA - 1/4"
#QOR4X **\$16.00**



VITON 'QC' O'RINGS
50 EA - 1/4"
#QOR8V **\$13.73**



COMPACT FILTER
1/2" w/Connector
#1009 **\$9.76**



CLEAR BOWL FILTER
50 MESH
1/2" x 1/2" FPT
#1012 **\$11.07**

all these great prices... PLUS 'U'-CAN USE YOUR BONUS BUCKS!

THIS MONTH \$38.88

25+% DRAW SUPER SUDS SUCKER
Draws lots of Chem w/300' of HP hose
#1964 ~~\$49.89~~



ALLISON ALL STAINLESS INJECTORS 20+% DRAW

Allison "Suds Sucker" Double Gulp Injectors

27+% DRAW



Adjustable

Reg. 44.95

ALLISON 23% INJECTOR
Non-Adjustable
3-5 GPM #1441 **\$12.93**
5-8 GPM #1443 **\$12.93**



NON-ADJUSTABLE \$44.89

1140 NON-ADJUSTABLE, 2-5 GPM

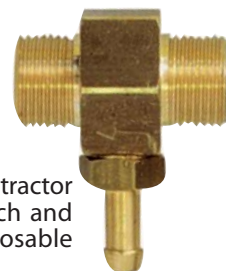
1141 NON-ADJUSTABLE, 5-8 GPM

ADJUSTABLE \$51.63

1142 ADJUSTABLE, 2-5 GPM

1143 ADJUSTABLE, 5-8 GPM

NEW FROM M-T-M VALUE PLUS INJECTORS with Ceramic Check Ball



Ideally suited for the contractor who uses a lot of bleach and needs economical disposable injectors.

#4460 Non-Adj, 2-5 GPM **\$7.37**
#4461 Non-Adj, 5-8 GPM **\$7.37**
#4462 Adjust, 2-5 GPM **\$7.87**
#4463 Adjust, 5-8 GPM **\$7.87**

Wow! 20% Draw Ceramic Ball

While Supply Last

SHOWN WITH OPTIONAL QUICK CONNECTS

PART #	DESCRIPTION	PRICE
1736	2-5 GPM	\$15.84
1738	5-8 GPM	\$15.84
1740	KIT	\$13.36

FOAM CANNON
Throws Thick Foam
Rated to 3000 PSI
#1273
\$49.12



LAFFERTY STAINLESS STEEL FOAM WAND

Airless Foam Wands are machined venturis that draw in atmospheric air to produce wet clinging foam. Designed for pressure washers that are already equipped with a downstream chemical injector.

- Foam is created instantly by the stainless steel venturi airless foam wand
- Foam throw up to 35 ft.
- 4 GPM Pressure Washer Required
- Recommended Injector: Super Suds Sucker

#969410 \$109.77



NEW STAINLESS FOAMER

BONUS BUCKS FOR CONTRACTORS ONLY

Voted the Industry's Best Web Site!

ADVANTAGE

ENVIROSPEC!

1-800-346-4876

GENERAL PUMP **\$721.00**
TSF2421 12.0 @ 2,500



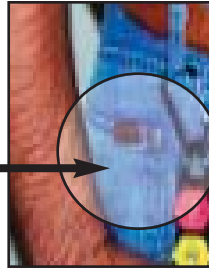
FREE FREIGHT!

NOZZLE KEEPER
Holds 3 Nozzles
#1827 **\$9.95**



Nozs Not Inc.

BELT CLIP
Nozzle Holder
Holds 4 Nozzles
#7780 **\$8.76**



TROMBONE NOZZLE HOLDER
Push for Hi-Pressure
Pull for Soap
#7775 **\$11.31**



SHOWER STYLE NOZZLE HOLDER
#1274 **\$11.72**

TWIST TYPE NOZZLE HOLDER
#1275 **\$19.96**



BALL TYPE NOZZLE HOLDER
Stainless Ball
#1267 **\$15.06**
Ceramic Ball
#1269 **\$18.87**

SOAP NOZZLE
65 Degree
40 Hole Size
#NOQB6540
\$.99



SOAP NOZZLE
65 Degree
40 Hole Size
#1876
\$2.93



LASERJET NOZZLES
LM-____
(insert size)
\$2.39



A 1505.5 would be 'LM-1505.5'

Starting March 1, 2011 every dollar you spend with us is eligible for...

SOOT REMOVER
1 Quart
#6999 **\$18.44**



Industrial PUMP-UP SPRAYER
2 Gallons
#1883 **\$14.93**



BACK-PACK SPRAYER
4 Gallons/90 PSI
#1844 **\$39.88**



GENERAL NOZZLES
NOS-____
(insert size)
\$2.77



A 2506 would be 'NOS-2506'

...10% TO 25% CASH BACK IN THE FORM OF BONUS BUCKS...

CHECKMATE IGNITION TESTER
#1947 **\$49.89**



SUNTEC FUEL SOLENOID
12 Volt
#1417 **\$26.87**



BECKETT FUEL PUMP
w/built-in 12Volt Solenoid
#1398 **\$59.15**



SPRAYING SYSTEMS
SSN-____
(insert size)
\$2.29



While Stock Last!

...THAT CAN BE USED AT SEASON START-UP IN FEBRUARY 2012

WINCO GENERATOR
2,000 WATTS
#1434
\$459.86



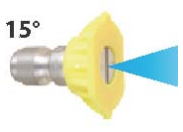
PREMIUM DRUM PUMP
Fits 55 Gallon Drum
#1650 **\$11.92**



VOLTMASTER GENERATOR
3,000 WATTS
#1438
\$434.27



LASERJET NOZZLES
15°
LQ-____
(insert size)
\$2.39



A 1505.5 would be 'LQ-1505.5'

SO! YOU GET THE BEST PRICES, SELECTION & SERVICE PLUS...

3-WAY BALL VALVE
For Dual Chem Set-ups - 1/4"
#1308 **\$26.12**



3,000 PSI BALL VALVE
3/8" - #1669
\$32.11
1/2" - #1670
\$39.92



3,000 PSI BALL VALVE
Carbon Steel
3/8"
#1303
\$19.66



GENERAL NOZZLES
25°
NOQS-____
(insert size)
\$2.77



A 2508 would be 'NOQS-2508'

FREE FREIGHT ON ALMOST EVERYTHING & ALL THIS MONEY BACK?

40 HP GAS KOHLER
25 AMP Recharge
#1836
\$2481.80



30 HP KOHLER
25 AMP Recharge
#1834
\$1766.20



"QUICK" OIL DRAIN PLUG
Fits Kohler/Briggs Pumps/Gears
#1428 **\$9.98**



SPRAYING SYSTEMS
SSNQ-____
(insert size)
\$2.39



While Stock Last!

Now You See Why More Contractors Call EnviroSpec

ADVANTAGE

ENVIROSPEC!

1-800-346-4876

GENERAL PUMP **\$694.43**
TSF2021
8.5 @ 3,600



TWIST & LOCK THROTTLE
36" Cable
#1991 **\$44.16**



KOHLER MAINTENANCE KIT
Filters, Plugs & Oil
Fits 22-30 HP
#6441 **\$42.96**

FREE FREIGHT!

GENERAL PUMP REBUILDING DVD
#GPV-101
\$12.95



ALLISON GEAR BOX TO 30 HP
#1028 1"
#1029 1-1/8"
\$236.80



13 HP CART
Fits Honda
#2049
\$84.75



\$39.00
WHILE STOCK LAST

ENGINE/PUMP BASE PLATE
13 thru 30 HP
#1899 **\$36.44**

GP PACKING INSERTION KIT
#1063
\$19.95



GP SEWER JETTER VALVE
Fits T & TS Pumps
#1006 **\$54.95**



ALLISON PUMP RAILS
Heavy Duty
#1653 **\$29.95**



Close to 50 Years Experience in the High Pressure Industry!

10,000 PSI GAUGE
To be used on
3500-4500 PSI
Pumps
#1133 **\$8.95**



PUMP PRESSURE TEST TOOL
Quick Connect
#1233 **\$14.36**



TEFLON TAPE
520 X 1/2
#1651 **\$.49**



FUEL/WATER SEPARATOR
Better than Racor
#1794 **\$29.95**

Visit us On-line if you want to see the industry's best selection!

DIP STICK FOR GENERAL
#1882 **\$9.95**



GAUGE PORT VALVE CAP
Fits GP TS Series
#1061 **\$19.95**



GENERAL PUMP OIL
6 Pak of 16 oz. btls.
#1064 **\$24.95**



ELECTRICAL TAPE
UL Listed
60 X 3/4
#1601 **\$.79**

all these great prices... PLUS 'U'-CAN USE YOUR BONUS BUCKS!

SUPER SWIVEL
For Hose Reels
1/2" x 3/8"
#1463 **\$29.88**



HUDSON FLOAT VALVE
The Industry's Best!
#1343 **\$31.62**



CAT PUMP OIL
21 oz. bottle
#4788 **\$9.92**



SIGHT GLASS FOR GENERAL
Fits T & TS Series
#1689 **\$9.89**



Visit us at http://www.envirospec.com where you will find...

MOSMATIC SWIVEL
1/4F x 1/4M
#1144 **\$33.87**



9-GALLON FUEL TANK
Set up for
Pressure Wash-
ers
#4121 **\$48.62**



MARINE BATTERY BOX
Lg #1690 **\$9.95**
Sm #4690 **\$9.95**



UNIVERSAL STARTER SOLENOID
For Gas Engines
Used on Vanguards
#1427 **\$9.95**

...OUR AWARD WINNING TECHNICAL LIBRARY

ALLISON ENGINE TERMINATOR
#1990 **\$14.65**



UNIVERSAL KEY SWITCH
Fits All Engines
#1430 **\$24.95**



HONDA GAS CAP
#1129 **\$4.95**



PUMP HEAD PRESSURE TESTER
#1229 **\$59.59**



Voted the Industry's Best Web Site!

ADVANTAGE

ENVIROSPEC!

1-800-346-4876

**GENERAL PUMP
TSF2221** \$694.13
10.2 @ 3,000



**ALLISON
SOFT TOUCH**
to 8 GPM - 3700 PSI

PULSAR
TO 8 GPM
4,000 PSI
#1099
\$41.23

AL-607
TO 8 GPM
4,500 PSI
#1114
\$39.62

K-7 UNLOADER
#1089 K7.0
#1090 K7.1
(WITH K7.0 BY-PASS)
#1091 K7.2
(WITH K7.1 BY-PASS)
#1092 K7.3
(WITH K7.2 BY-PASS)
\$69.62



YU-2140
21 GPM
4500 PSI
#1101
\$79.95



VB10
8 GPM - 4000 PSI
#1108 \$75.07



YU-831
TO 8 GPM - 4,000 P.
#1104
\$39.96



#7637 \$69.88
w/o Micro Switch

#7638 \$74.88
with Micro Switch



MV-550
8 GPM
3600 PSI
#1120
\$40.09

**K-10
Soft-Touch**
11 GPM
3600 PSI
#1096
\$67.70



All Profits from Chems go to Children & Animal Charities



#TW244

\$119.95

Extends to 24'
4,000 PSI
3/8" Hose

The Industry's Best
TELESCOPING WAND

YOU CAN USE UP TO

25%

Industry's #1 Chlorine Pumper!

CYCLONE
BY: **ALLISON**

Gun & 150' Hose
#2339 \$199.95



#9878

**PUMPS CHLORINE
UP TO 10 GPM & UP TO 300 PSI**

Regular Price \$2,695.00

Best Buy in the Industry!

\$2,195.00 \$1795.00

Expires
2-28-2011



**OF YOUR ACCUMULATED
BONUS BUCKS
TO PURCHASE CHEMICAL
THIS MONTH!
PLUS WE ARE GIVING YOU
ANOTHER \$10.00 OFF
EACH DRUM PACK**

Don't see what you need?

**SPRAY-FLEX
LANCE**
5,000 PSI
#1692
\$49.95



GUTTER SWEEP
Connects to Lance
#1814 \$6.16



I am sure we have it - just Call!

**DIRT KILLER
PREMIUM
HI-LO's**
4.0 #1686
4.5 #1687
5.5 #1688
\$39.95

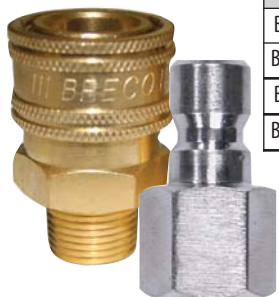


**6,000 PSI
Ball Valve**
3/8"
316 Stainless
#1667
\$41.95



<http://www.envirospec.com>

'USA' - BRECO - 'USA'
COUPLINGS & PLUGS



PART #	BRECO COUPLINGS
BC4F	1/4" FPT Inlet, 1/4" Coupler Outlet
BC4M	1/4" MPT Inlet, 1/4" Coupler Outlet
BC8F	3/8" FPT Inlet, 3/8" Coupler Outlet
BC8M	3/8" MPT Inlet, 3/8" Coupler Outlet

Couplers: **Plugs:**
 1/4" **\$2.45** 1/4" **\$.86**
 3/8" **\$2.70** 3/8" **\$.99**

PART #	BRECO PLUGS
BP4F	1/4" FPT Inlet, 1/4" Plug Outlet
BP4M	1/4" MPT Inlet, 1/4" Plug Outlet
BP8F	3/8" FPT Inlet, 3/8" Plug Outlet
BP8M	3/8" MPT Inlet, 3/8" Plug Outlet

HARDENED BALL BEARINGS!
EPDM O'RINGS STANDARD!

You really don't have to buy a Truck Load to get the best price in the industry!
SERPENTINE PRESSURE WASH HOSE



4,000 PSI 50' BLACK \$49.95 #1708	4,000 PSI 100' BLACK \$89.95 #1709	4,000 PSI 50' GREY \$59.95 #1804	4,000 PSI 100' GREY \$99.95 #1805
6,000 PSI 50' BLACK \$61.95 #6001	6,000 PSI 100' BLACK \$109.95 #6002	6,000 PSI 50' GREY \$69.95 #6101	6,000 PSI 100' GREY \$129.95 #6102



NEW
for 2011

PIVOTING LANCE
JUST TWIST THE HANDLE!

#2040 28" \$52.68
 #2041 41" \$59.84
 #2042 51" \$68.78



Head Pivots 90°
Direct power where you need it every time.

Season Start-up Special

Fuel-up & Fire-off Ready!

- 18 Horsepower Vanguard Engine
- Beckett Heating System
- Burner Diagnostic System
- Gigantic Gas and Fuel Tanks...

SUPER SKID
5.6 GPM @ 3500 PSI

#5635V18V

\$4795.00

or... **\$4075.75**

if you have enough bonus bucks

There is 'red hot' and then there is a hotter hot... **WHITE HOT**

ULTRA HIGH BTU OUTPUT

THE MOST ADVANCED COIL DESIGN IN THE PRESSURE WASHER INDUSTRY

...and we pay the freight!



PRSR STD
U.S. POSTAGE
PAID
PPCO

EnviroSpec

751 MLK Highway - Homerville, GA 31634

1-800-346-4876

IT'S TIME TO USE YOUR

Bonus Bucks

HAVE FUN!



Typically FREE FREIGHT requires that you either purchase at least \$100.00 on-line or \$200.00 for call-in orders. However, during the Bonus Buck Redemption Period we only require a minimum order of \$50.00 for either.

You can pay for up to 15% of any equipment in this flyer or our on-line catalog with the available money in your Bonus Buck Account even though it is already on sale!

TO USE DURING THE MONTH OF FEBRUARY 2011 ONLY



Here is what you have in your BONUS BUCK ACCOUNT

EQUIPMENT



Bonus Bucks
BIG TICKET
ACCESSORIES



Pick out a pump, Hose tract reel, concrete cleaner over 20" and engine that you want & reduce the SALE PRICE by another \$100.00 each by using available cash in your Bonus Buck Account

CHEMICAL

You can pay for up to 25% of any chemical in this flyer or our on-line catalog with the available money in your Bonus Buck Account even though it is already on sale for \$10.00 off per drum kit!



...and whatever is left over in your account you can use to further reduce everything else by ~~5%~~

ON SECOND THOUGHT make that....

10%