

BETA-200/CC

High Pressure Diaphragm Pump

BETA-200/CC high pressure, high volume diaphragm pumps are excellent for various horticultural and agricultural spraying applications. Simplicity of design and common parts allow easy and affordable maintenance. Control valve and pressure gauge are standard.

The BETA-200/CC is constructed of brass and stainless steel with brass and stainless steel liquid handling parts.

For industrial uses and spraying applications not listed, please consult UDOR U.S.A.



SPECIFICATIONS

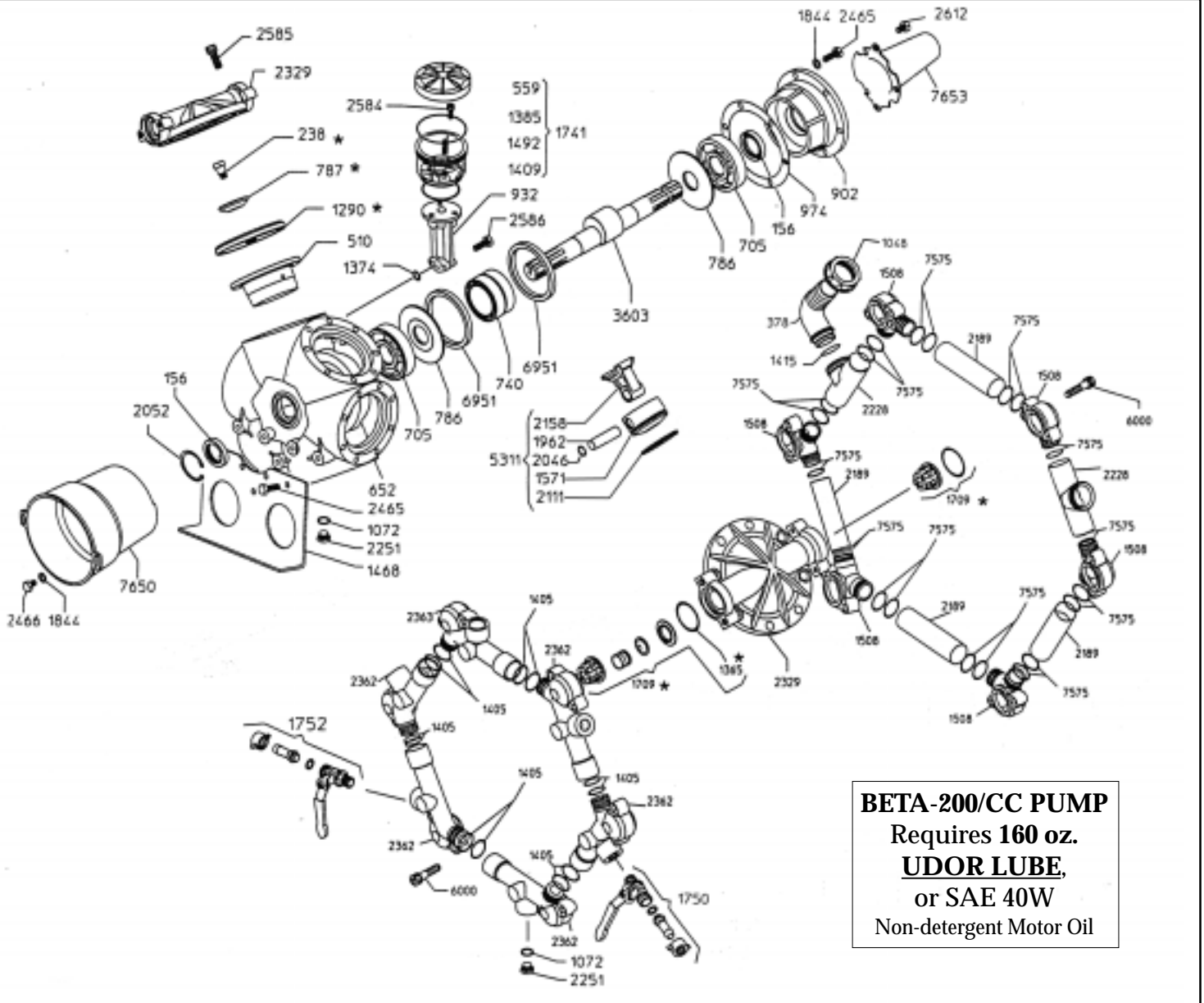
Maximum Flow	58 GPM
Maximum Pressure	700 PSI
Maximum RPM	550 RPM
Maximum Temperature	140°F
Inlet Ports	1-1/2" (2)
Outlet Ports	
Hose Barb (Ball Valve Controlled)	1/2" (2)
FNPT	3/4" (2)
Bypass	1-1/4"
Dimensions	L-15" x W-17" x H-21"
Weight	200 lbs.
Diaphragm Material	
Standard	DESMOPAN
Optional	BUNA-N

NOTE - Protect pumps from freezing. If freezing conditions exist, flush pump and system with a 50/50 mixture of anti-freeze and water.

UDOR U.S.A., INC.

500 Apollo Drive
Lino Lakes, MN 55014
TEL. (651) 785-0666
FAX. (800) 732-2670
www.udorusa.com

BETA-200/CC - Exploded View Diagram and Parts List



REF#	PART#	DESCRIPTION	QTY	REF#	PART#	DESCRIPTION	QTY
5	0001.07	Retainer Ring	2	*1381	1101.27	O-Ring	8
64	0002.53	Crankshaft (Thrushaft)	1	1382	1101.29	O-Ring	10
67	0002.56	Crankshaft	1	1386	1101.33	O-Ring	1
78	0003.10	Pressure Accumulator	1	1395	1101.48	O-Ring	1
169	0007.26	Seal for T.S. Body	1	1398	1101.42	O-Ring	1
170	0007.27	Seal	1	1408	1101.63	O-Ring	1
240	0102.04	Diaphragm Bolt	4	1421	1101.88	O-Ring	1
367	0202.48	Suction Elbow	1	1432	1201.08	Valve Poppet	8
497	0206.24	Piston Sleeve	4	1460	1202.37	Mounting Rail	2
552	0208.07	Oil Reservoir Cap	1	1490	1203.27	Oil Reservoir	1
558	0208.21	Accumulator Head	1	1578	1205.18	Piston	4
632	0209.45	Pump Body	1	1702	6006.01	Valve Assembly	8
633	0209.47	Pump Body T.S.	1	1721	6017.06	Head Assembly	4
698	0214.01	Ball Bearing	1	1740	6033.01	Oil Reservoir	1
701	0214.05	Ball Bearing	1	1801	6015.29	Piston/Rod Assembly	4
747	0218.01	Air Valve Cap Protector	1	1804	6031.02	Accumulator Assembly	1
794	0301.14	Retainer Washer	4	1843	1403.07	Washer	2
804	0301.32	Washer	2	1845	1403.10	Washer	6
832	0302.51	Washer	2	1926	1501.10	Valve Seat	8
845	0303.01	Nut	8	1967	1502.07	Connecting Rod Pin	4
871	0304.04	Self-Locking Nut	2	2051	1506.15	Snap Ring	8
884	0501.87	Internal Manifold Cover	1	2152	1519.19	Connecting Rod	4
924	0501.69	Flange	1	2251	1603.02	Oil Plug	2
925	0501.70	Flange	1	2268	1603.32	Head Plug	9

* Parts Included in Diaphragm Repair Kit - #8700.24. (Also available in Buna-N - #8700.23.)

NOTE - For pumps purchased after 10/95 with brass pulsation dampener, order diaphragm repair kit #8700.23/B or 8700.24/B