

BETA-150/CC

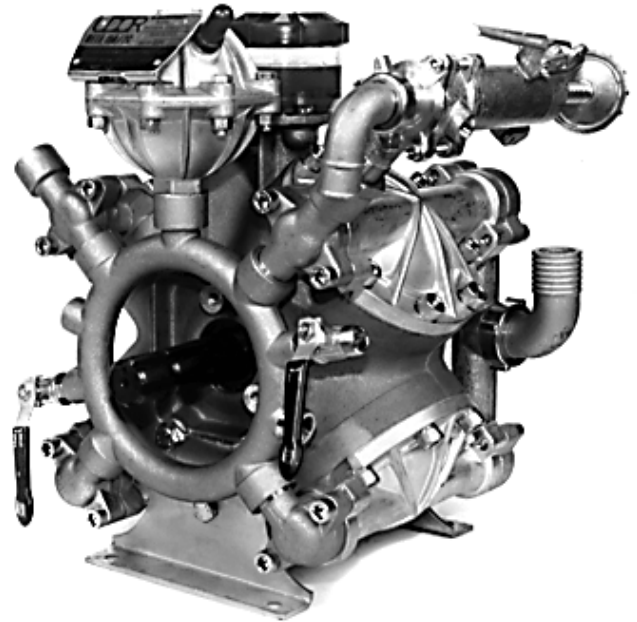
High Pressure Diaphragm Pump

BETA-150/CC high pressure, high volume diaphragm pumps are excellent for various horticultural and agricultural spraying applications. Simplicity of design and common parts allow easy and affordable maintenance. Control valve, pulsation dampener and pressure gauge are standard.

The BETA-150/CC is constructed of aluminum, brass and stainless steel with brass and stainless steel liquid handling parts.

For industrial uses and spraying applications not listed, please consult UDOR U.S.A.

Splined Q-2 bushing for pulley drive is available upon request.



SPECIFICATIONS

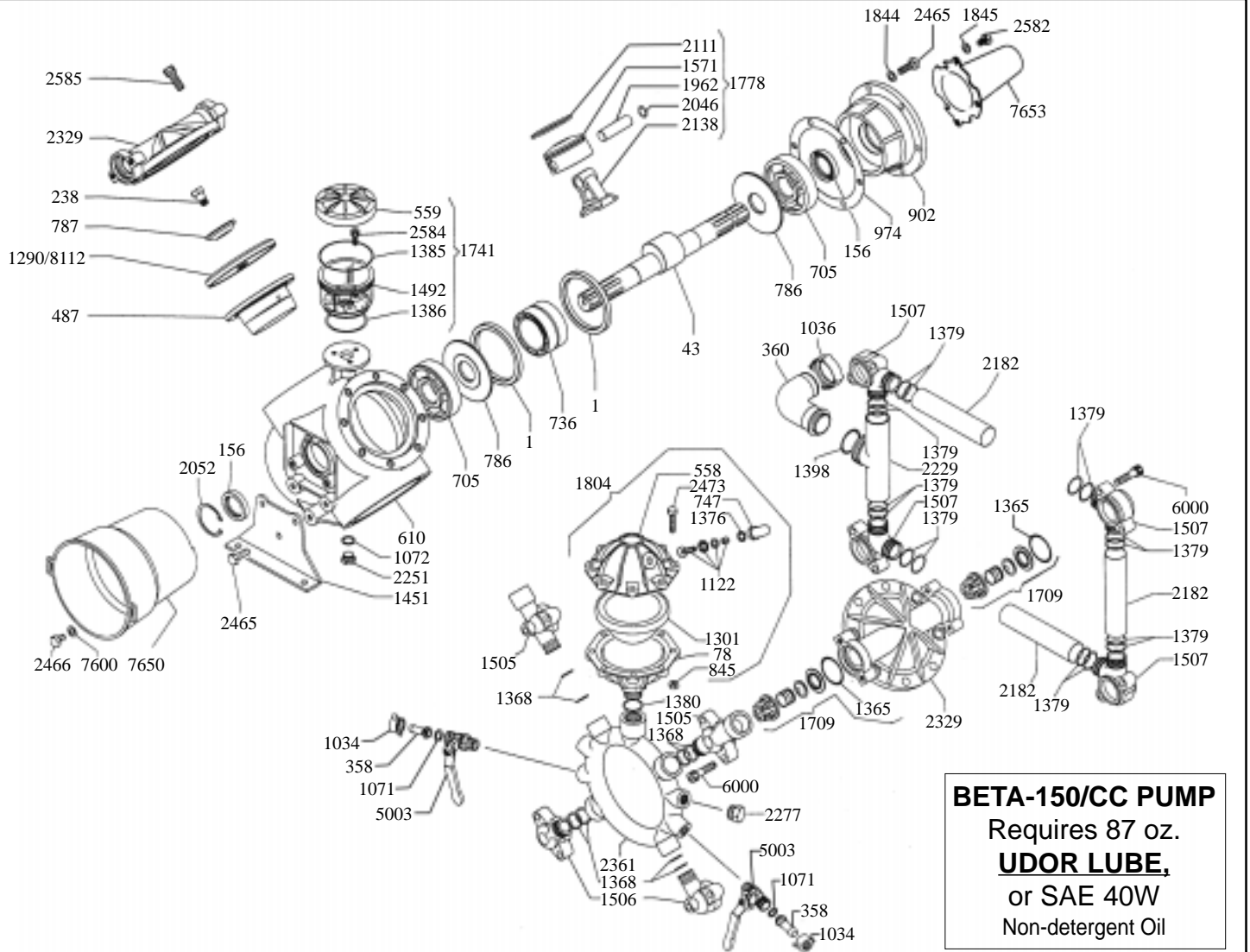
Maximum Flow	40 GPM
Maximum Pressure	700 PSI
Maximum RPM	540 RPM
Maximum Temperature	140°F
Inlet Ports	1-1/2"
Outlet Ports	
Hose Barb (Ball Valve Controlled)	1/2" (2)
FNPT	3/4"
MNPT	3/4"
Bypass	1"
Dimensions	L-21.9" x W-15" x H-16.5"
Weight	130 lbs.
Diaphragm Material	
Standard	DESMOPAN
Optional	BUNA-N

NOTE - Protect pumps from freezing. If freezing conditions exist, flush pump and system with a 50/50 mixture of anti-freeze and water.

UDOR U.S.A., INC.

500 Apollo Drive
Lino Lakes, MN 55014
TEL. (651) 785-0666
FAX. (800) 732-2670
www.udorusa.com

BETA-150/CC - Exploded View Diagram and Parts List



BETA-150/CC PUMP
 Requires 87 oz.
UDOR LUBE,
 or SAE 40W
 Non-detergent Oil

REF#	PART#	DESCRIPTION	QTY	REF#	PART#	DESCRIPTION	QTY
1	0001.01	Retainer ring	2	1451	1202.14	Base Plate	2
43	0002.29	Crank Shaft	1	1492	1203.30	Oil Reservoir	1
78	0003.10	Accumulator Body	1	1505	1203.45	Discharge Elbow, 3/4" F	2
156	0007.02	Crank Shaft Seal	2	1506	1203.46	Discharge Elbow	2
238	0102.03	Diaphragm Bolt	4	1507	1203.44	Suction Elbow	4
358	0202.19	Brass Barb	2	1571	1205.08	Piston	4
360	0202.84	Suction Hose Barb	1	1709	6006.08	Valve Assembly	8
487	0206.12	Piston Sleeve	4	1778	6015.01	Piston & Rod Assembly	4
558	0208.21	Accumulator Head	1	1804	6031.02	Accumulator Assembly	1
559	0208.22	Oil Reservoir Cap	1	1844	1403.09	Washer	4
610	0209.17	Pump Body	1	1845	1403.10	Washer	3
705	0214.11	Ball Bearing	2	1962	1502.01	Connecting Rod Pin	4
736	0216.02	Needle Bearing	1	2046	1506.02	Snap Ring	8
747	0218.01	Air Valve Cap	1	2052	1506.17	Snap Ring	1
786	0301.02	Washer	2	2111	1509.05	Piston Ring	4
787	0301.03	Retainer Washer	4	2138	1519.03	Connecting Rod	4
845	0303.01	Nut	8	2182	1601.11	Suction Tube	3
902	0501.46	Flange	1	2229	1602.27	Suction Tube	1
974	0602.01	Gasket	1	2251	1603.02	Oil Plug	1
1034	0604.09	Barb Nut	2	2277	1603.34	Plug	1
1036	0604.48	Suction Brass Nut	1	2329	1604.54	Head	4
1071	0605.05	Rubber Gasket	2	2361	1605.22	Discharge Manifold	1
1072	0605.09	Aluminum Gasket	1	2465	1804.03	Bolt	10
1122	0608.15	Air Valve Assembly	1	2466	1804.06	Bolt	3
1290	0903.01	Diaphragm (BUNA-N, Optional)	4	2473	1804.54	Bolt	8
*1301	0903.16	Accumulator Diaphragm	1	2582	1805.04	bolt	3
*1365	1101.01	O-Ring	8	2584	1805.06	Bolt	3
1368	1101.04	O-Ring	8	2585	1805.08	Bolt	32
1376	1101.16	O-Ring	1	5003	0608.46	Ball Valve (Right)	2
1379	1101.23	O-Ring	16	6000	1805.07	Bolt	16
1380	1101.27	O-Ring	1	7600	1403.36	Washer	3
1385	1101.32	O-Ring	1	7650	1219.02	PTO Safety Shield	1
1386	1101.33	O-Ring	1	7653	1219.15	Shaft Protector	1
1398	1101.42	O-Ring	1	*8112	0903.33	Diaphragm (DESMOPAN, Standard)	4

* Parts Included in Diaphragm Repair Kit - #8700.07. (Also available in BUNA-N - #8700.18.)