

Master Card - VISA - Discover - AMEX

<p><b>Vanguard</b> 1" SHAFT - Electric Start 20 AMP Recharging System Muffler Included</p> <p><b>18 HORSEPOWER</b> <b>\$749.00</b> Hot Water Ready #1732</p>	<p><i>Blows the Honda 13 away!</i></p> 	<p><b>\$25.00 Over Cost!</b></p>  <p><b>KOHLER 14</b> <b>\$454.00</b> #KO14</p>	<p><b>Kohler</b> 1" SHAFT - Electric Start 20 AMP Recharging System Muffler Included</p> <p><b>18 HORSEPOWER</b> <b>\$799.00</b> Hot Water Ready #1829</p>
--	--	---	--

The Industry's Largest  
**FULL SERVICE PROVIDER**  
to the pressure washer industry.  
Since 1972

# EnviroSpec's

'Frequent Buyer Flyer' thru August 2011

**FREE FREIGHT** when you order...  
**\$125.00 from the Web or \$200.00 if you call it in.**

Not covered under Free Freight are...  
Pressure Washers & Heaters  
Gas Engines and Gas Engine Equipment  
Waste Water Recovery Equipment  
Only Catalog and Flyer Items Apply

## SUPER SKID

by: Allison Iron Horse

The most advanced coil design in the  
PRESSURE WASHER INDUSTRY

**Reg. \$7,995.00 - With 18 HP VANGUARD**

Horizontal or Vertical System → **\$3,995.00**  
*SAME PRICE*

2-YEAR  
**'BUMPER TO BUMPER'**  
PUMP WARRANTY

For California Tank Certification add \$350.00  
Certified Funds only on Hot Water Skids.

Part Number	System Type
5635LV	Vertical (shown)
5635LH	Horizontal

**WITH COMPLETE  
BURNER DIAGNOSTICS**



FLOW TEMP HI-LIMIT  
Allison Burner Diagnostic Center

**\$100.00 Over Cost!**

**5.6 GPM  
3,500 PSI**



*There is 'red hot' and then  
there is a **hotter hot...***

**WHITE HOT**

**1-800-346-4876 Minimum Order \$50.00**



“Cleaning Chemicals from the future...  
...with Today’s Environment in Mind!”

[d’Limonene](#), [Lorox LO](#), [TSP](#), [Superflo Polymer](#) and much, much more!



**DEVELOPED SPECIFICALLY FOR SURFACES CONTAINING MOLD, MILDEW AND GENERAL ‘FALL-OUT’ POLLUTANTS SUCH AS ACID RAIN AND EXHAUST CARBON**

At EnviroSpec we strive for perfection in everything we do. This is especially true about our new product ‘enviroMiNT’, the most advanced professional detergent ever developed for surfaces containing mold or mildew. ‘enviroMiNT’ now joins the Emulsifier Plus & Limonene family in redefining the professional house and building cleaning industry.

At EnviroSpec creativity through chemistry means more than just a query of basic ‘builders’ and ‘foamers’ that are little more than ‘off the shelf’ grocery store cleaners. The challenge with ‘enviroMiNT’ was to make it a single application approach - unique, forward-thinking and a world apart from anything else you will find to safely remove mold and mildew & industrial and general fall-out pollutants while at the same time helping to revive surface luster through the presence of high quantities of our SuperFlo Polymer Complex.

‘enviroMiNT’ is the result of unique environment friendly surfactants and builders and our very own SuperFlo Polymer all of which ‘blur’ the boundaries when using the latest techniques and advancements in detergent chemistry.

We have been manufacturing ‘job matched’ professional detergents & degreasers since 1972.



**100% of all profits from the sales of our Chemical is donated to help fund Children’s and Animal Charities.**

One of the most comfortable grips in the industry!

**YGA5000 Series  
ERGONOMICS AT WORK**

Ergonomics looks at what kind of work you do, what tools you use and your whole job environment. The aim is to find the best fit between you and your job conditions.

*The YGA5000 is an incredible ‘Fit!’*



**YGA5000  
YGA5000C**

Permissible to:  
12 GPM  
PSI: 5000 PSI  
TEMP: 300° F

**NEW FOR 2011 - YGA5000 & YGA5000C**

PART #	DESCRIPTION / PRICE
YGA5000	INDUSTRIAL SERIES \$28.16
YGA5000C	INDUSTRIAL Chlorine Version \$29.43

**We were once Mobile Washers so we speak fluent Mobile Wash Language!**

## K7 Unloader

**\$83.91**



Flow Actuated

**GPM:** 2.1-10.8  
**PSI:** 3,500 PSI  
**TEMP:** 165° F



EnviroSpec has installed Special Valving to help reduce Surging while in BY-PASS

PART #	DESCRIPTION	PRICE
1089	2.1-2.9 GPM - K7.0	<del>\$109.95</del>
1090	2.9-4.2 GPM - K7.1	<del>\$109.95</del>
1091	4.2-6.6 GPM - K7.2	<del>\$109.95</del>
1092	6.6-10.8 GPM - K7.3	<del>\$109.95</del>
1789	REPAIR KIT - Fits All K-7 Unloaders	\$ 24.95

## YU-2140 Unloader



**GPM:** 21  
**PSI:** 4,500 PSI  
**TEMP:** 200°

**\$89.08**

The best large volume pressure actuated unloader in the industry!

PART #	DESCRIPTION	PRICE
1101	1/2" In/Out/By-pass	<del>\$ 119.95</del>
1102	ADJUSTABLE KNOB	\$ 14.23
1103	Repair Kit	\$ 32.91

## AL-607 Unloader

**GPM:** 8.0  
**PSI:** 4,500 PSI  
**TEMP:** 190° F



PART #	DESCRIPTION / PRICE
1114	AL-607X UNLOADER \$44.37
1113	REPAIR KIT \$20.66

Learn...  
**Fleet Washing & Two-Step Cleaning**



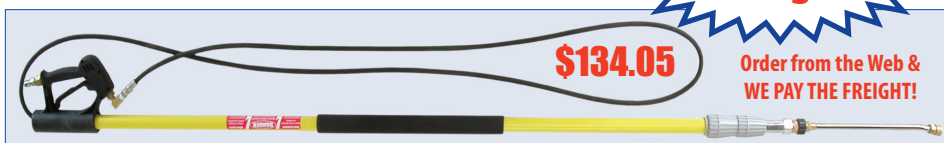
[www.envirospec.com](http://www.envirospec.com)

see our FREE...  
**HOUSE WASH MANUAL**  
[www.envirospec.com](http://www.envirospec.com)



## Telescoping 'Long Wands'

RATED TO 4,000 PSI



**\$134.05**

**All New Light Weight Design!**

Order from the Web & WE PAY THE FREIGHT!

PART #	DESCRIPTION / PRICE
2024M	Premium 3 Section to 24' w/Alum Inner Pole \$199.65

PART #	DESCRIPTION / PRICE
2028	Load Bearing Long Wand Harness <del>\$29.95</del> <b>\$16.77</b>

## & Long Wand Belt



## Premium Series Stainless & Zinc

- 1/4" MPT inlet
- 1/4" outlets for more Chem Draw



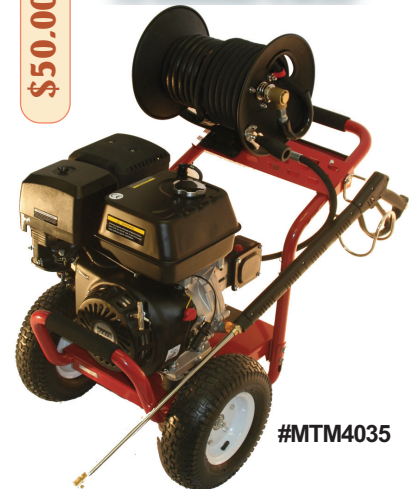
- **TEMP:** 300°F
- **GPM:** 10.5
- **PSI:** 4,100

1262	42" STAINLESS STEEL	\$48.60	<b>BEST BUY</b>
<b>NEW</b> 1362	42" ZINC PLATED	\$42.06	<b>BEST BUY</b>

**Order from the WEB and RECEIVE A SPECIAL GIFT!**

Special Purchase Sale!  
**4.0 GPM**  
**3500 PSI**  
**13 HORSEPOWER**

**\$50.00 Over Cost!**



#MTM4035

Includes:  
GUN, REEL, HOSE, LANCE, NOZZLES

REGULAR PRICE \$1595.00

**YOUR COST \$899.00**

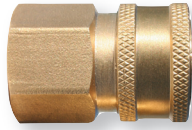
# NOW WITH 450° O'RINGS

With our 'Safety-Loc' that locks them in place.

## Premium Brass Coupler

Brass Coupler with 'Safety Loc System'

**1/4" \$2.23**  
**3/8" \$2.65**



Shown: Brass Female Pipe Thread (FPT)

## Premium Plated Steel Plugs

"Super Hard" Plated Steel Plug

**1/4" \$ .91**  
**3/8" \$ .99**



Shown: Female Pipe Thread (FPT)

PART #	DESCRIPTION	PRICE
QS4FB	1/4" FPT Inlet, 1/4" Coupler Outlet	\$ <del>3.23</del>
QS4MB	1/4" MPT Inlet, 1/4" Coupler Outlet	\$ <del>3.23</del>
QS8FB	3/8" FPT Inlet, 3/8" Coupler Outlet	\$ <del>3.95</del>
QS8MB	3/8" MPT Inlet, 3/8" Coupler Outlet	\$ <del>3.95</del>

PART #	DESCRIPTION	PRICE
QP4FB	1/4" FPT Inlet, 1/4" Plug Outlet	\$ <del>1.84</del>
QP4MB	1/4" MPT Inlet, 1/4" Plug Outlet	\$ <del>1.84</del>
QP8FB	3/8" FPT Inlet, 3/8" Plug Outlet	\$ <del>2.09</del>
QP8MB	3/8" MPT Inlet, 3/8" Plug Outlet	\$ <del>2.09</del>

## Allison "Super Suds Sucker"

The Original Super Suds Sucker™ is back!



**\$43.55**

PART #	DESCRIPTION	LIST
1964	SUPER SUDS SUCKER INJECTOR	\$ <del>119.95</del>

For those of you to new or to young to remember...  
...a few years back we designed a chemical injector that would just about suck the bottom out of the pail. Not only that - we were able to put as much as 500' of hose on the machine and still suck as much chemical as most injectors equipped with only 50' of hose.

Here are the two primary advantages of owning a **Super Suds Sucker** and when you think about it - what else is there?

**Longevity** - This could be the last injector you will ever buy. Most of the ones we built 10 years ago are still 'sucking' strong.

**Product to Surface** - When we first came out with this product we told people then that "if you can't get the product to the surface you may as well stay at home" - the same holds true today. With a **Super Suds Sucker** you will definitely get the product to the surface.

What do most people say when they first try it?

**NOW THIS SUCKS!**

## Learn... CEMETERY RESTORATION

Cemetery stones can be washed, straightened, and repaired. This type of work can be both extremely satisfying and financially rewarding. Whether working on one stone, a family plot, or an entire cemetery, the methods stay the same.

**Multiple Stone Monuments:** Many monuments consist of two or more stones that are placed on top of each other. These stones should have spacers between the layers to prevent water and ice damage. Soft metal spacers are placed about 1/4" in from the edges at each corner. Old timers recommend copper pennies...

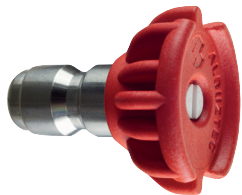
See the rest of this great article and opportunity at...

[www.envirospec.com](http://www.envirospec.com)



**CERAMIC NOZZLES LAST 10 TIMES LONGER**  
than Stainless Steel!

**CUTS LIKE A RAZOR!**



**STAINLESS AFTER 50 HOURS**



**CERAMIC AFTER 50 HOURS**



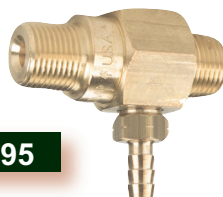
MFG. SUGGESTED LIST \$34.50

**Quick Connect Ceramic Nozzles \$5.95**  
**1/4" Threaded Ceramic Nozzles \$5.95**

## Allison "Suds Sucker"

- Up to 20% draw rate
- Machined Brass
- Ceramic Ball for harsh chemicals & chlorine
- 316 Stainless Nozzle
- Rated to 5,000 PSI
- Viton® O'ring

**\$15.95**



**\$16.95**



## 20% DRAW RATE

PART #	DESCRIPTION	PRICE
<b>ADJUSTABLE</b>		
1446	ADJUSTABLE WITH CERAMIC BALL, 2-5 GPM	\$ <del>29.95</del>
1448	ADJUSTABLE WITH CERAMIC BALL, 5-8 GPM	\$ <del>29.95</del>
<b>NON-ADJUSTABLE</b>		
1441	NON-ADJUSTABLE WITH CERAMIC BALL, 2-5 GPM	\$ <del>29.95</del>
1443	NON-ADJUSTABLE WITH CERAMIC BALL, 5-8 GPM	\$ <del>29.95</del>

**We were once Mobile Washers so we speak fluent Mobile Wash Language!**

**Allison**  
Severe Duty Performance Pumps

THE ONLY PUMPS  
IN THE WORLD WITH A



**2-YEAR  
'BUMPER to BUMPER'  
WARRANTY**

Our... **TS4035**  
is a direct replacement for:  
A-R: **RW15**  
COMET: **RW4035S**  
GENERAL: **TS1511**  
Just 'zip their's off' and  
'zip ours on!'

**If anything happens in  
the first two years we will  
FIX IT FREE!**

Our... **TS5635**  
is a direct replacement for:  
A-R: **RW21**  
CAT: **5CP5140**  
COMET: **RW5535S**  
GENERAL: **TS2021**  
PRESSURE PRO: **HP5535**  
Just 'zip their's off' and  
'zip ours on!'

**JUST HOW GOOD IS AN  
Allison  
Severe Duty Performance Pump?**

EnviroSpec will provide a full 2-year 'Bumper to Bumper' warranty on these two Allison Severe Duty Pumps. Just return it to us pre-paid and a certified systems technician will replace any worn parts such as check valves, packings, oil seals or anything else that is showing signs of wear and the possibility of 'downtime.' We will also perform a 42-Point Inspection, clean and change the oil and make sure your pump comes back to you in 'like new' mechanical condition.

Our job and promise is to keep your equipment running with little to no down time and we do that by providing our customers with a certified pump inspection and service program that you can't get anywhere else.

Allison Severe Duty Pumps will run harder & last longer than any pump in the industry and to show you just how confident we are that our Severe Duty pumps are better all you have to do is look at this warranty.

- Exclusive 2-year 'bumper to bumper' warranty with renewable service plans.
- Heavy Duty Reinforced Brass Heads with External and Internal Bracing.
- Large Diameter Stainless Steel Valve Caps with Increased Thread Depth.
- Oversized Bearings for greater belt 'side-loads' means longer pump back-end life.
- Heavy Connecting Rod Assemblies with Perfect Cap Alignment.
- 'State of the Art' Packing Design means longer, uninterrupted run-times.
- Cool-run Technology and Extra Capacity Oil Sumps promote longevity.

**SPECIAL NOTE:** Just because the pumps GAS HP requirement may seem to be higher than the engine you have - these pumps will still work with any engine that you have so long as it has a 1" engine shaft. You will just have to adjust your pressure lower than the rated pump pressure. You will still get the same GPM - just less pressure. For example: If you need a lot of volume and not as much pressure you could run the 5.6 GPM Pump with a 13 HP engine and adjust your pressure to 2500 PSI rather than the max. rated pressure of the pump. Call with questions - it really is easy to do.

Model	GPM	PSI	RPM	Shaft	Gas HP	Weight	LIST PRICE	CONTRACTOR
TS4035	4.0	3500	1450	24mm	13	31	\$1475.00	<b>\$495.00</b>
TS5635	5.6	3500	1450	24mm	18	31	\$1475.00	<b>\$495.00</b>
TS8636	8.6	3600	1450	24mm	28	45	\$2215.00	<b>\$745.00</b>
TS1025	10.0	2500	1450	24mm	23	45	\$2215.00	<b>\$745.00</b>

What? You don't have our...  
**HUGE CATALOG  
YET?**

**1-800-346-4876  
or [www.envirospec.com](http://www.envirospec.com)  
will take care of that!**



## Drum Siphon Pump

• The industry's #1 selling siphon pumps

**\$14.42**

**\$19.46**



PART #	DESCRIPTION	PRICE
1650	SIPHON PUMP, HEAVY DUTY	\$ <del>26.95</del>
1781	SIPHON PUMP, EXTREME DUTY	\$ <del>29.95</del>

## "Lid-Off" Pail Lid Remover

**\$3.63**



• Safely remove lids from buckets

PART #	DESCRIPTION	PRICE
1652	PAIL LID REMOVER	\$ <del>9.95</del>

## DELEVAN 12 VOLT TANK & SPRAYER

WITH CHEMICAL VALVES  
1 GPM @ 50 PSI



While Stock Last!  
**\$70.11**

U-Pay Fgeight  
Includes: Tank, Pump, Lance,  
12 Volt Leads & 15' Hose

#3059 ~~\$139.63~~

### Section: By-pass Configurations for Unloader Valves

Pressure washers generally are manufactured with a closed loop by-pass that cycles the by-pass water in a small amount from the unloader by-pass port to the inlet port of the pump, and then back to the inlet port of the unloader. This configuration is an accident waiting to happen. Friction generated by the plungers moving against the packings generates heat that is transferred to the water. Because there is only a small amount of water the water temperature increases rapidly. When the temperature exceeds about 155 degrees, damage begins to occur to the packings. If allowed to continue, the hot water can damage the plungers in the pump, damage seals in the unloader, and destroy the hoses between the pump and the unloader. Ideally, machines would either have their by-pass plumbed differently, or have a thermal relief valve or switch installed as a safeguard against by-pass heat build-up. Because most machines are manufactured in a way that allows this damage to occur, it is wise to change the set up aftermarket. For mobile wash set-ups that are truck or trailer mounted and are supplied by a water tank, the best way to configure the by-pass is to plumb it directly back ... *The rest of this great article can be found in our technical library at [www.envirospec.com](http://www.envirospec.com)*

## Paper Funnels



• For Pumps, Engines & Gear Reducers

PART #	CAPACITY / QTY PER PAK	PRICE
686790	32 oz. / 36 Count	\$42.90
686791	8.5 oz. / 36 Count	\$22.70

## M-T-M HYDROJETS

THE INDUSTRY'S BEST  
'FULL-PATTERN' TURBO!

**5000 PSI**



TURBO	NOZ	KIT
\$66.33		\$32.74
16284	3.0	41482
16285	3.5	41483
16286	4.0	41484
16287	4.5	41485
16288	5.0	41486
16289	5.5	41487
16290	6.0	41488
16291	6.5	41489
16292	7.0	41490
16293	7.5	41491

## Clear Bowl Water Filter

**\$12.97**

- 50 mesh filtration
- Heavy duty molded plastic
- Viewable filter media



PART #	DESCRIPTION	PRICE
1012	CLEAR BOWL FILTER, 1/2" In/Out	\$ <del>22.95</del>
1013	CLEAR BOWL FILTER, 3/4" In/Out	\$ <del>22.95</del>

Learn to clean...

## RESTAURANT EXHAUST HOODS

Cleaning a restaurant exhaust system typically involves washing the exhaust fan, ductwork, filters, and hood. Using hot water is highly recommended. Each section of the system should be washed using a method that reduces the need for clean up after finishing. Prior to any cleaning, steps must be taken to prepare the area for washing.

Tenting The Hood: Hood filters and the drip tray are removed as a first step. Set these items aside to clean later. Heavy plastic sheeting is attached to the edge of the hood, providing a tented in area all the way around. The plastic sheeting...

See the rest of this great article and opportunity at...

[www.envirospec.com](http://www.envirospec.com)



**Order from the WEB and RECEIVE A SPECIAL GIFT!**

# SERPENTINE Industrial Pressure Hose - 3/8"

**The Industry's #1 SELLING HOSE**

- 'Endura Tuff' cover design
- 1 ea. 3/8" MPT swivel end
- 1 ea. 3/8" MPT fixed end
- Temperature to 250°F
- Tough wrapped outer cover
- Strain reliefs on both ends



PART #	DESCRIPTION	NET PRICE	SALE
<b>4,000 PSI - 3/8" BLACK HOSE - ONE WIRE</b>			
1708	HOSE, BLACK, 50' - Wrapped	\$ 89.95	<b>\$ 59.95</b>
1709	HOSE, BLACK, 100' - Wrapped	\$ 144.95	<b>\$114.95</b>
<b>6,000 PSI - 3/8" BLACK HOSE - TWO WIRE</b>			
6001	HOSE, BLACK, 50' - Wrapped	\$114.95	<b>\$ 84.95</b>
6002	HOSE, BLACK, 100' - Wrapped	\$ 184.95	<b>\$154.95</b>
<b>4,000 PSI - GREY NON-MARKING - ONE WIRE</b>			
1804	HOSE, GREY, 50' - Wrapped	\$ 99.95	<b>\$ 69.95</b>
1805	HOSE, GREY, 100' - Wrapped	\$ 154.95	<b>\$124.95</b>
<b>6,000 PSI - GREY NON-MARKING - TWO WIRE</b>			
6101	HOSE, GREY, 50' - Wrapped	\$124.95	<b>\$ 94.95</b>
6102	HOSE, GREY, 100' - Wrapped	\$ 194.95	<b>\$164.95</b>

# COOL DRIVE

by: Allison Iron Horse

Inj, Gun, Hose, Lance Sold Separately



**\$100.00 Over Cost!**

P/N	Engine	SALE PRICE	PSI & GPM
<b>CD4035PC</b> List Price \$2195.00	13 HP Honda Powder Coat Cart	<b>\$1299.00</b>	4.0 @ 3500 PSI
<b>CD4035SS</b> List Price \$2395.00	13 HP Honda Stainless Cart	<b>\$1469.00</b>	4.0 @ 3500 PSI
<b>CD5625PC</b> List Price \$2395.00	13 HP Honda Powder Coat Cart	<b>\$1299.00</b>	5.6 @ 2500 PSI
<b>CD5625SS</b> List Price \$2595.00	13 HP Honda Stainless Cart	<b>\$1649.00</b>	5.6 @ 2500 PSI

### Section: Chemical Injection

#### Article: Adjustable or Fixed Injector?

There are pros and cons to both. Using a fixed type injector eliminates the adjustment knob. The adjustment knob on many injectors won't stay where adjusted due to vibration. A fixed design is generally slightly less expensive. An adjustable injector allows the draw to be reduced. Reducing the draw of the detergent will save some money. Reducing the amount of detergent product reaching the surface that is being cleaned generally makes the job harder and reduces the quality of the end result. An adjustable injector can be operated fully open whenever detergent is desired, then it provides the option of using the pressure washer with low pressure and no detergent, by shutting the adjustment completely.

*'Tons of Stuff'* like this can be found in the industry's most viewed Technical Web Site...

visit us at [www.envirospec.com](http://www.envirospec.com)

# Premium LaserJet & General Pump Nozzles

*These are the 'hardest hitting', most precise nozzles in the industry!*

General Quick Connect  
each \$ 4.49

**\$3.10**

General Screw-In  
each \$ 4.49

**\$3.10**



LaserJet Quick Connect  
each \$ 4.99

**\$3.18**

LaserJet Screw-In  
each \$ 4.99

**\$3.18**

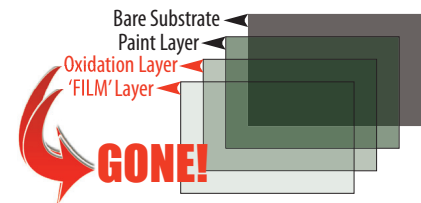
# BOND BREAKER

Not only will Bond Breaker remove 'Road Film' but it will completely remove oxidation & it will revitalize surfaces that have been damaged by 'caustic cleaners' when cleaned on a regular basis.

*We invented*

**1-STEP - NON-CAUSTIC 'FILM FREE' CLEANING**  
*and that is why we have*

**THE INDUSTRY'S #1 'FILM-FREE' TRUCK WASH**



5-Gal. Drum Kit #BB5 \$ 25.00

55-Gal. Drum Kit #BB55 \$175.00

**Order from the WEB and RECEIVE A SPECIAL GIFT!**

**EnviroSpec**

751 MLK Highway  
Homerville, GA 31634

PRSR STD  
U.S. POSTAGE  
PAID  
PPCO

**'FULL-DRESS' DETERGENTS**  
worth taking out on the town!

Every 55-Gallon Drum Kit  
sold in August 2011 comes with  
a special Birthday Present inside.



Happy 25<sup>th</sup>

# PRODIGY

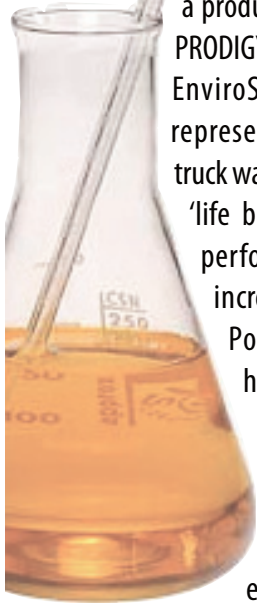
In 1986 John Allison, a mobile washer for 14 years, developed a product he named SuperFlo Polymer™ and his first product PRODIGY hit the market in August of that year. When it did the EnviroSpec concept was born and today PRODIGY alone represents over 10,000 Drum Paks in annual sales. It was a #1 truck wash then and today it is still #1. SuperFlo Polymer™ is the 'life blood' of Prodigy as it is with most of EnviroSpec's performance mobile wash chemicals. In addition to its incredible 'coupling' capabilities the SuperFlo Polymer™ complex contains a large concentration of high-yield Gloss Enhancers that help revive surface luster.

In detergent chemistry the challenge for most manufacturers has been to be able to blend 1-pound of product into 1-gallon of water without having any separation or 'fall-out.' EnviroSpec has pushed that envelope to the point where, depending on the concentration level of SuperFlo Polymer™ in the mix, you will be able to blend as much as 3-pounds of product to 1-gallon of water without separation or 'fall-out.' Now that is what we call a 'super concentrate.'

SuperFlo Polymer™ was developed by a mobile washer who needed to have the ability to 'crank-up' the horsepower for those 'impossible to clean' jobs while reducing weight by carrying only 1-drum of super concentrate that would yield 3-drums of concentrate.

Prodigy is only one of many EnviroSpec products that contain the SuperFlo Polymer™ complex. To see them all visit us at...

[www.envirospec.com](http://www.envirospec.com) for the absolute best Web Site and On-line Catalog in the industry!



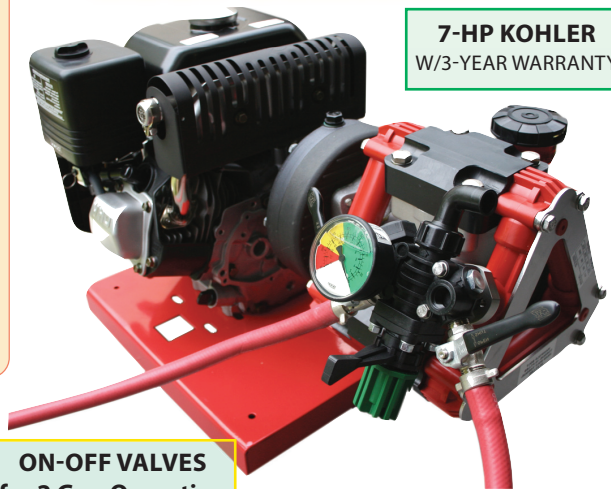
# CYCLONE

by: Allison Iron Horse

SORRY! NO TOYS ALLOWED.

**...this is a real  
CHLORINE PUMPING  
ROOF CLEANER!**

**\$100.00 Over Cost!**



**7-HP KOHLER**  
W/3-YEAR WARRANTY

**ON-OFF VALVES**  
for 2 Gun Operation

**Up to 10 GPM**  
**Up to 300 PSI**

**#9878**  
List Price \$2799.00  
**SALE \$1799.00**

**1-800-346-4876 Minimum Order \$50.00**