

# RMV / RMW - Economy Axial Radial Drive Pumps



## FEATURING

**MANIFOLD:** Aluminum precision die cast special anticorrosion finish, brass and forged.

**BOLTS:** Three 6mm cadmium plated steel

**PLUNGERS:** Hardened stainless steel.

**CRANKCASE:** Precision die cast, large coupling fins.

**BEARINGS:** Premium oversized ball and needle bearing.

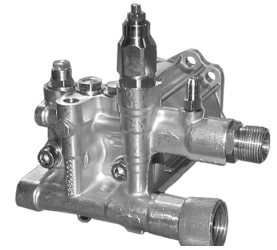
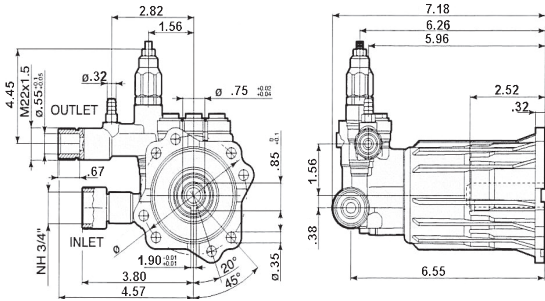
**VALVES, SEATS, AND SPRINGS:** Plastic poppet, seat and cage, stainless steel spring.

**SEALS:** Buna-N 2000 and 2300 psi single seal, 2500 psi dual seals.

## DIMENSIONS

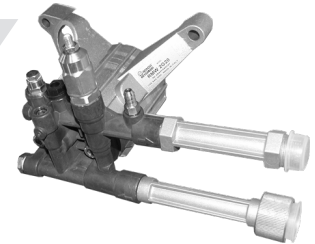
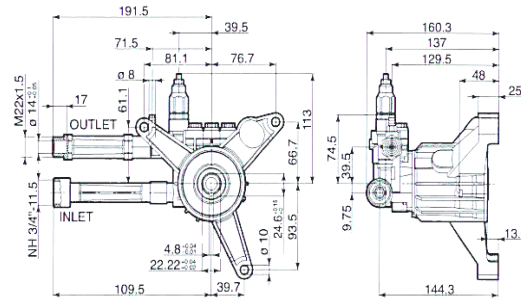
RMV

D version  
Hollow shaft pump  $\phi$  3/4"



RMW

D version  
Hollow shaft pump  $\phi$  7/8"



## RMV 3400 RPM D VERSION 3/4" WITH GAS ENGINE FLANGE

MODEL	MAX GPM	MAX L/MIN	MAX PSI	MAX BAR	POWER EBHP	BORE DIA MM	STROKE MM	CRANKSHAFT ID STAMP	WEIGHT LBS.
RMV2G25D	2	7.6	2500	172	3.4	12	8.3	5	7.5
RMV2.5G27D	2.5	9.5	2700	186	3.4	12	9.7	1	7.5

## RMW 3400 RPM D VERSION 7/8" WITH VERTICAL GAS ENGINE FLANGE

RMW2.2G20	2	7.6	2000	138	3.3	12	8.3	5	7.7
RMW2G23B	2	7.6	2300	159	3.2	12	8.3	5	7.3
RMW2G25D	2	7.6	2500	172	3.4	12	8.3	5	7.7
RMW2.5G25D	2.5	9.5	2500	172	4.3	12	9.7	1	7.7

Oil Capacity = 2.2 oz

Maximum Fluid Temperature = 140° F

Inlet Thread = 3/4" GH

Discharge Thread = 22mm

**SPECIAL NOTE:** Use only AR64545 for the RM/XJ/SJ/BK Series pumps only: Do NOT change oil. Use oil only to add if low. This oil is a specially formulated synthetic with special additives for the demands of the RM, XJ, SJ and BK pump series. No other oil is factory approved for these pumps, and could result in pump failure.

\*Available upon special request (non-stock item)

# XJV-E / XJW-E - Economy Axial Radial Drive Pumps



## FEATURING

**MANIFOLD:** High strength forged brass for long term use.

**BOLTS:** Three 10mm grade 8.8.

**PISTONS:** Polished stainless steel for longer pump life in harsh environments.

**CRANKCASE:** Precision die-cast, large cooling fins for maximum heat dissipation.

**BEARINGS:** Angular contact ball bearing stabilizes the crankshaft and one thrust needle bearing absorbs the plunger load and assure long radial plate life. All of the thrust plates are made of heat treated hardened steel for extended life.

**VALVES, SEATS, AND SPRINGS:** Stainless steel with specially designed Ultra Form cages provide extra long life and positive seating.

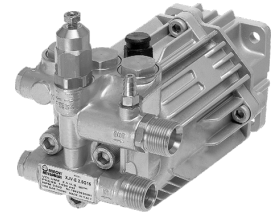
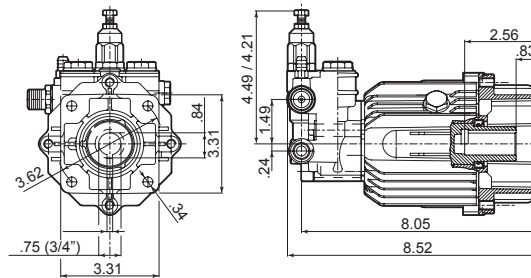
**SEALS AND V-PACKINGS:** Continuously lubricating for extended life.

**UNLOADER:** Built in to optimize performance while reducing setup time. Integral trap pressure, fixed or adjustable chemical injector.

## DIMENSIONS

XJV-E

D version + F7  
Hollow shaft pump  $\varnothing$  3/4"



## XJV-E 3400 RPM D VERSION 3/4" WITH GAS ENGINE FLANGE

MODEL	MAX GPM	MAX L/MIN	MAX PSI	MAX BAR	POWER EBHP	BORE DIA MM	STROKE MM	CRANKSHAFT ID STAMP	WEIGHT LBS.
XJV-E22G24D-F7	2.2	8.3	2400	166	3.6	15	5.8	-	11

## XJW 3400 RPM D VERSION 7/8" WITH VERTICAL GAS ENGINE FLANGE

XJW24G24D-F27	2.4	9	2400	166	3.9	15	5.8	-	11
---------------	-----	---	------	-----	-----	----	-----	---	----

Oil Capacity = 4.5 oz

Maximum Fluid Temperature = 140° F

Inlet Thread = 1/2" M

Discharge Thread = 3/8" M

**SPECIAL NOTE:** Use only AR64545 for the RM/XJ/SJ/BK Series pumps only: Do NOT change oil. Use oil only to add if low. This oil is a specially formulated synthetic with special additives for the demands of the RM, XJ, SJ and BK pump series. No other oil is factory approved for these pumps, and could result in pump failure.

\*Available upon special request (non-stock item)

# SJV / SJW / XJV - Super Duty Axial Radial Drive Pumps



## FEATURING

**MANIFOLD:** High strength forged brass for long term use.

**BOLTS:** Three 10mm grade 8.8.

**PISTONS:** Ceramic coated stainless steel for longer pump life in harsh environments.

**CRANKCASE:** Precision die-cast, large cooling fins for maximum heat dissipation. Sight glass, fill and drain plugs.

**BEARINGS:** Angular contact ball bearing stabilizes the crankshaft and one thrust needle bearing absorbs the plunger load and assure long radial plate life. All of the thrust plates are made of heat treated hardened steel for extended life.

**VALVES, SEATS, AND SPRINGS:** Stainless steel with specially designed Ultra Form cages provide extra long life and positive seating.

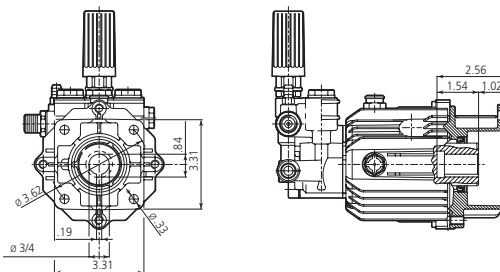
**SEALS AND V-PACKINGS:** Continuously lubricating for extended life.

**UNLOADER:** Built in to optimize performance while reducing setup time. Integral trap pressure, fixed or adjustable chemical injector.

## DIMENSIONS

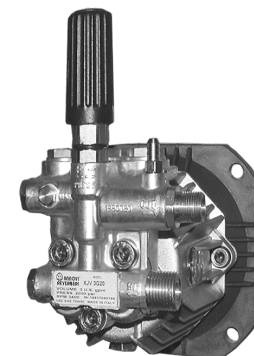
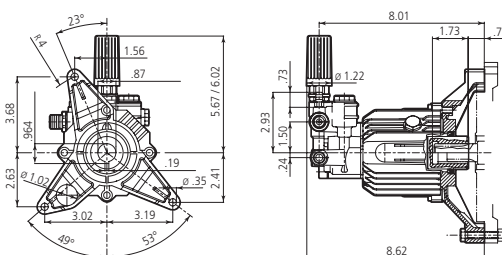
SJV

D version + F7  
Hollow shaft pump  $\phi$  3/4"



SJW

D version + F27  
Hollow shaft pump  $\phi$  7/8"



## SJV 3400 RPM D VERSION 3/4" WITH GAS ENGINE FLANGE

MODEL	MAX GPM	MAX L/MIN	MAX PSI	MAX BAR	POWER EBHP	BORE DIA MM	STROKE MM	CRANKSHAFT ID STAMP	WEIGHT LBS.
SJV2.5G25D-F7**	2.5	9.5	2500	170	4.5	15	5.8	-	11
SJV2.5G27D-F7	2.5	9.5	2700	186	4.5	15	5.8	-	11
SJV3G27D-F7	3	11.4	2700	186	5.2	15	6.8	-	11
SJV3G27D-EZ	3	11.4	2700	186	5.2	15	6.8	-	11

\*\* Special 22mm M Outlet

## SJW 3400 RPM D VERSION 7/8" WITH VERTICAL GAS ENGINE FLANGE

SJW3G25D-F27	3	11.4	2500	170	5	15	6.8	-	11
--------------	---	------	------	-----	---	----	-----	---	----

## XJV 3400 RPM E VERSION 5/8" WITH NEMA 56-C FLANGE

XJV2G15E-F8	2	7.6	1450	100	2	15	4.8	-	11
XJV3G20E-F8	3	11.4	2000	140	4	15	6.8	-	11

Oil Capacity = 4.5 oz

Maximum Fluid Temperature = 140° F

Inlet Thread = 1/2" M

Discharge Thread = 3/8" M

**SPECIAL NOTE:** Use only AR64545 for the RM/XJ/SJ/BK Series pumps only: Do NOT change oil. Use oil only to add if low. This oil is a specially formulated synthetic with special additives for the demands of the RM, XJ, SJ and BK pump series. No other oil is factory approved for these pumps, and could result in pump failure.

\*Available upon special request (non-stock item)

# RSV - Triplex Plunger Pump



## FEATURING

**MANIFOLD:** New high efficiency design concept. (Patented). Forged brass for strength and no porosity for long life and higher hydrostatic pressures.

**BOLTS:** Eight 6mm grade 8.8.

**PLUNGERS:** Ceramic coated stainless steel.

**CRANKCASE:** Precision die-cast, large cooling fins and anodized for maximum heat dissipation.

**BEARINGS:** Oversized for maximum life and load disbursement, needle bearing on the drive side and ball on the non-drive side. Each bearing is held in position on the crankshaft and crankcase by snap rings. This assures positive alignment and centering of the connecting rods and crankshaft in relation to the crankcase, it also eliminates the crankshaft from floating.

**VALVES, SEATS, AND SPRINGS:** Stainless steel with specially designed Ultra Form cages to provide long life and positive seating.

**SEALS AND V-PACKINGS:** "V" style (D-1) Buna-N (cotton duct weave base) strong and tightens under load.

**OIL SEALS:** All are constructed of Buna-N rubber.

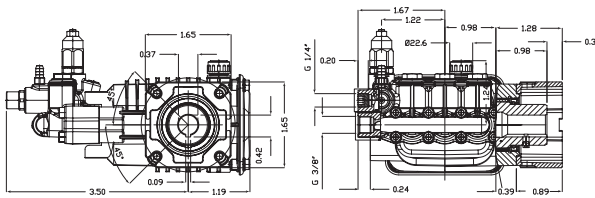
**PLUNGER RODS:** Stainless steel construction for strength (no plating to scrape off), o-ring plunger sealing system.

**CONNECTING RODS:** One piece special alloy aluminum and bronze based, oversized for maximum strength, load disbursement, and life. Heavy pin area construction, for added load strength.

## DIMENSIONS

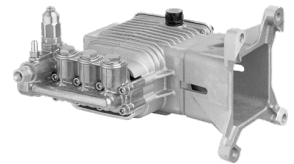
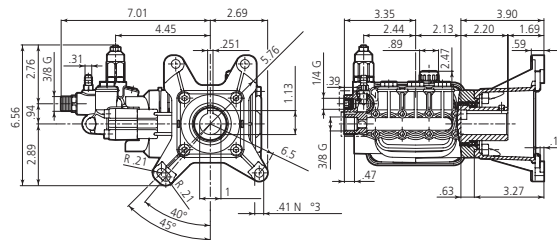
RSV

D version + F25  
Hollow shaft pump  $\varnothing$  3/4"



RSV

D version + F40  
Hollow shaft pump  $\varnothing$  1"



Built-In Unloader Valve

PUMP HEAD DESIGN PATENTED

## RSV 3400 RPM D VERSION 3/4" WITH GAS ENGINE FLANGE

MODEL	MAX GPM	MAX L/MIN	MAX PSI	MAX BAR	POWER EBHP	BORE DIA MM	STROKE MM	CRANKSHAFT ID STAMP	WEIGHT LBS.
RSV2.5G25D-F25	2.5	9.5	2500	170	4.5	15	6.2	10	14
RSV3G25D-F25	3	11.4	2500	170	5	15	7.6	9	14

## RSV 3400 RPM D VERSION 1" WITH GAS ENGINE FLANGE

RSV3G35D-F40	3	11.4	3500	240	5.5	15	7.6	9	14
RSV3.5G35D-F40	3.5	13.2	3500	240	10	15	8.2	8	14
RSV4G30D-F40	4	15.1	3000	205	7.5	15	9.4	7	14
RSV4G40D-F40	4	15.1	4000	275	11	15	9.4	7	14

Oil Capacity = 16 oz

Maximum Fluid Temperature = 140° F

Inlet Thread = 3/8" F

Discharge Thread = 3/8" F

**SPECIAL NOTE:** Use AR64516 Oil. First change oil after 50 hours of use. Then every 500 hours. This oil is specially formulated to provide correct lubrication properties for our pumps. **No** other oil is factory approved for these pumps.

\*Available upon special request (non-stock item)

# XT / XTA / XTV - Triplex Plunger Pumps



## FEATURING

**MANIFOLD:** High strength forged brass for long term use.

**BOLTS:** Six 6mm grade 12.9.

**PLUNGERS:** A special thick solid ceramic for long life, strong durability and more resilience.

**CRANKCASE:** Precision die-cast, large cooling fins and anodized for maximum heat dissipation. Sight glass, fill and drain plugs.

**BEARINGS:** Oversized for maximum life and load disbursement, two ball bearings. Each bearing is held in position on the crankshaft and crankcase by snap rings. This assures positive alignment and centering of the connecting rods and crankshaft in relation to the crankcase, it also eliminates the crankshaft from floating.

**VALVES, SEATS, AND SPRINGS:** Stainless steel with specially designed Ultra Form material valve cages that are impervious to water absorption and provide long life and positive seating.

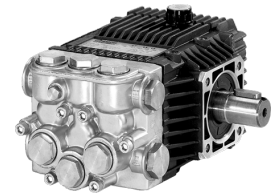
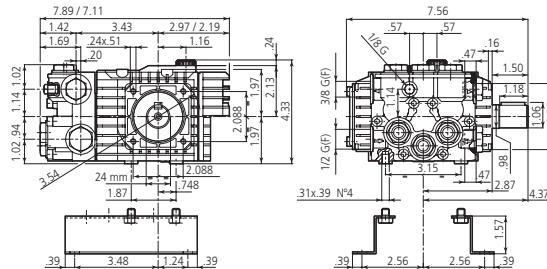
**SEALS AND V-PACKINGS:** Continuously lubricating for extended life.

**PLUNGER RODS:** High strength stainless steel.

**CONNECTING RODS:** One piece special alloy aluminum based and bronze (+1800 PSI) oversized for maximum strength, load disbursement, and long life. Heavy pin area construction, for added load strength.

## DIMENSIONS

XT / XTA / XTV N version  
Solid shaft pump ø 24 mm



## XT 1450 RPM N VERSION 24MM SOLID SHAFT

MODEL	MAX GPM	MAX L/MIN	MAX PSI	MAX BAR	POWER EBHP	BORE DIA MM	STROKE MM	CRANKSHAFT ID STAMP	WEIGHT LBS.
XT8.14N	2.11	8	2000	140	3	15	11	6	11
XT9.14N*	2.37	9	2000	140	3.3	18	8.4	4	11
XT11.14N*	2.9	11	2000	140	4	18	11	6	11

## XTA 1750 RPM N VERSION 24MM SOLID SHAFT

XTA2G15NBA	2.11	8	2000	140	3	15	9.6	5	10
XTA2G22N	2.11	8	2200	150	3	15	9.6	5	11
XTA3G16N	3	11.4	1600	110	3	18	9.6	5	10
XTA3G19N	3	11.4	1900	130	4	18	9.6	5	11

PSI ≤ 1740 = Oil Capacity = 8 oz  
PSI ≥ 1740 = Oil Capacity = 10 oz

Maximum Fluid Temperature = 140° F  
Maximum Fluid Temperature = 140° F

Inlet Thread = 1/2" F  
Inlet Thread = 1/2" F

Discharge Thread = 3/8" F  
Discharge Thread = 3/8" F

## RAIL KITS

AR 1836 3/8"  
AR 1836H 1-1/2"

**SPECIAL NOTE:** Use AR64516 Oil. First change oil after 50 hours of use. Then every 500 hours. This oil is specially formulated to provide correct lubrication properties for our pumps. **No** other oil is factory approved for these pumps.

\*Available upon special request (non-stock item)

# XTA / XTV - Triplex Plunger Pumps



## FEATURING

**MANIFOLD:** High strength forged brass for long term use.

**BOLTS:** Six 6mm grade 12.9.

**PLUNGERS:** A special thick solid ceramic for long life, strong durability and more resilience.

**CRANKCASE:** Precision die-cast, large cooling fins and anodized for maximum heat dissipation. Sight glass, fill and drain plugs.

**BEARINGS:** Oversized for maximum life and load disbursement, two ball bearings. Each bearing is held in position on the crankshaft and crankcase by snap rings. This assures positive alignment and centering of the connecting rods and crankshaft in relation to the crankcase, it also eliminates the crankshaft from floating.

**VALVES, SEATS, AND SPRINGS:** Stainless steel with specially designed Ultra Form material valve cages that are impervious to water absorption and provide long life and positive seating.

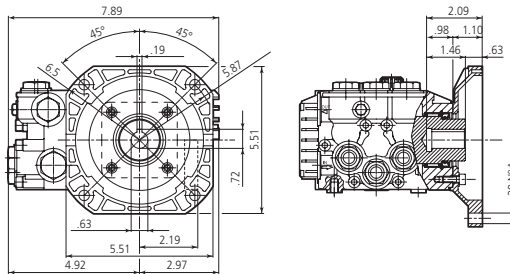
**SEALS AND V-PACKINGS:** Continuously lubricating for extended life.

**PLUNGER RODS:** High strength stainless steel.

**CONNECTING RODS:** One piece special alloy aluminum based and bronze (+1800 PSI) oversized for maximum strength, load disbursement, and long life. Heavy pin area construction, for added load strength.

## DIMENSIONS

XTA / XTV E version + F8  
Hollow shaft pump  $\varnothing$  5/8"



## XTA 1750 RPM E VERSION 5/8" WITH NEMA 56-C FLANGE

MODEL	MAX GPM	MAX L/MIN	MAX PSI	MAX BAR	POWER EBHP	BORE DIA MM	STROKE MM	CRANKSHAFT ID STAMP	WEIGHT LBS.
XTA0.5G10EBA-F8	0.5	1.9	1000	69	0.4	15	2.2	Z	8.5
XTA1G15E-F8	1	3.8	1500	103	1	15	4.83	D	10
XTA2G15EBA-F8	2.11	8	1800	124	2.5	15	9.6	5	10
XTA2G22E-F8	2.11	8	2200	152	3	15	9.6	5	11
XTA3G16EBA-F8	3	11.4	1600	110	3	18	9.6	5	10
XTA3G19E-F8	3	11.4	1900	130	4	18	9.6	5	11
XTA4G15EBA-F8	4	15	1500	103	4	18	12.8	7	11

## XTV 3400 RPM E VERSION 5/8" WITH NEMA 56-C FLANGE

XTV0.5G10E-F8	0.5	1.9	1000	69	0.4	15	2.2	Z	8.5
XTV2G15EBA-F8	2.11	8	1500	103	2	15	4.8	D	10
XTV2G22E-F8*	2.11	8	2200	150	3	15	4.8	D	11
XTV3G16E-F8	3	11.4	1600	110	3	15	7.2	C	10
XTV3G22E-F8	3	11.4	2200	150	4.5	15	7.2	C	11

PSI  $\leq$  1740 = Oil Capacity = 8 oz  
PSI  $\geq$  1740 = Oil Capacity = 10 oz

Maximum Fluid Temperature = 140° F  
Maximum Fluid Temperature = 140° F

Inlet Thread = 1/2" F  
Inlet Thread = 1/2" F

Discharge Thread = 3/8" F  
Discharge Thread = 3/8" F

**SPECIAL NOTE:** Use AR64516 Oil. First change oil after 50 hours of use. Then every 500 hours. This oil is specially formulated to provide correct lubrication properties for our pumps. **No** other oil is factory approved for these pumps.

\*Available upon special request (non-stock item)



# XTV - Triplex Plunger Pumps



## FEATURING

**MANIFOLD:** High strength forged brass for long term use.

**BOLTS:** Six 6mm grade 12.9.

**PLUNGERS:** A special thick solid ceramic for long life, strong durability and more resilience.

**CRANKCASE:** Precision die-cast, large cooling fins and anodized for maximum heat dissipation. Sight glass, fill and drain plugs.

**BEARINGS:** Oversized for maximum life and load disbursement, two ball bearings. Each bearing is held in position on the crankshaft and crankcase by snap rings. This assures positive alignment and centering of the connecting rods and crankshaft in relation to the crankcase, it also eliminates the crankshaft from floating.

**VALVES, SEATS, AND SPRINGS:** Stainless steel with specially designed Ultra Form material valve cages that are impervious to water absorption and provide long life and positive seating.

**SEALS AND V-PACKINGS:** Continuously lubricating for extended life.

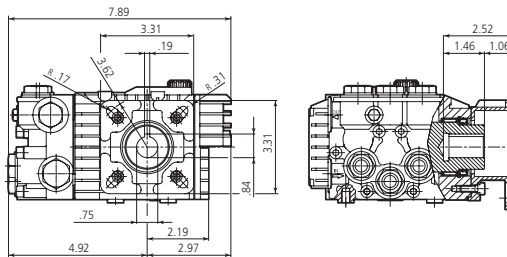
**PLUNGER RODS:** High strength stainless steel.

**CONNECTING RODS:** One piece special alloy aluminum based and bronze (+1800 PSI) oversized for maximum strength, load disbursement, and long life. Heavy pin area construction, for added load strength.

## DIMENSIONS

XTV

D version + F7  
Hollow shaft pump ø 3/4"



## XTV 3400 RPM D VERSION 3/4" WITH GAS ENGINE FLANGE

MODEL	MAX GPM	MAX L/MIN	MAX PSI	MAX BAR	POWER EBHP	BORE DIA MM	STROKE MM	CRANKSHAFT ID	STAMP	WEIGHT LBS.
XTV2G15DBA-F7	2.11	8	1500	103	2	15	4.8	D		10
XTV2G22D-F7*	2.11	8	2200	150	3	15	4.8	D		10
XTV3G16D-F7	3	11.4	1600	110	3	15	7.2	C		10
XTV3G22D-F7	3	11.4	2200	150	4.5	15	7.2	C		11

PSI ≤ 1740 = Oil Capacity = 8 oz  
PSI ≥ 1740 = Oil Capacity = 10 oz

Maximum Fluid Temperature = 140° F  
Maximum Fluid Temperature = 140° F

Inlet Thread = 1/2" F  
Inlet Thread = 1/2" F

Discharge Thread = 3/8" F  
Discharge Thread = 3/8" F

**SPECIAL NOTE:** Use AR64516 Oil. First change oil after 50 hours of use. Then every 500 hours. This oil is specially formulated to provide correct lubrication properties for our pumps. **No** other oil is factory approved for these pumps.

\*Available upon special request (non-stock item)

# XM / XMA - Triplex Plunger Pumps



## FEATURING

**MANIFOLD:** High strength forged brass for long term use.

**BOLTS:** Eight 6mm grade 12.9.

**PLUNGERS:** A special thick solid ceramic for long life, strong durability and more resilience.

**CRANKCASE:** Precision die-cast, large cooling fins and anodized for maximum heat dissipation. Sight glass, fill and side and bottom drain plugs.

**BEARINGS:** Oversized for maximum life and load disbursement, needle bearing on the drive side and ball on the non-drive side. Each bearing is held in position on the crankshaft and crankcase by snap rings. This assures positive alignment and centering of the connecting rods and crankshaft in relation to the crankcase, it also eliminates the crankshaft from floating.

**VALVES, SEATS, AND SPRINGS:** Stainless steel with specially designed Ultra Form material valve cages that are impervious to water absorption and provide long life and positive seating.

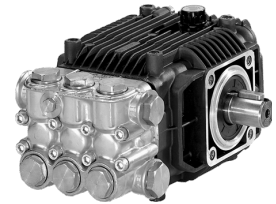
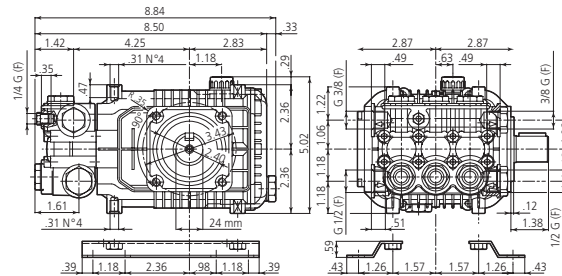
**SEALS AND V-PACKINGS:** Continuously lubricating for extended life.

**PLUNGER RODS:** High strength stainless steel.

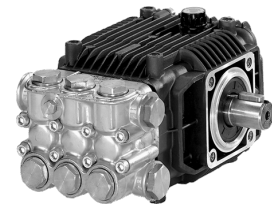
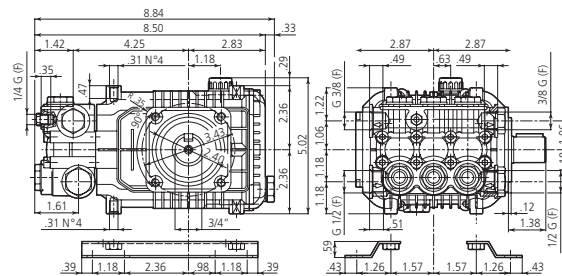
**CONNECTING RODS:** One piece special alloy aluminum based, oversized for maximum strength, load disbursement, and long life. Heavy pin area construction, for added load strength.

## DIMENSIONS

**XM / XMA** N version  
Solid shaft pump ø 24 mm



**XMA** N version  
Solid shaft pump ø 3/4"



## XM 1450 RPM N VERSION 24MM SOLID SHAFT

MODEL	MAX GPM	MAX L/MIN	MAX PSI	MAX BAR	POWER EBHP	BORE DIA MM	STROKE MM	CRANKSHAFT ID STAMP	WEIGHT LBS.
XM11.17N	2.9	11	2500	170	5	15	15.4	1	14
XM13.17N*	3.43	13	2500	170	5.5	18	12.4	4	14
XM15.15N	3.96	15	2200	150	5.5	18	14.2	2	14

## XMA 1750 RPM N VERSION 24MM SOLID SHAFT

XMA3G25N	3	11.4	2500	170	5	15	13.2	3	14
XMA3.5G25N	3.5	13.2	2500	170	5.5	15	15.4	1	14
XMA4G20N	4	15.1	2000	140	5.5	18	13.2	3	14

## XMA 1750 RPM N VERSION 3/4" SOLID SHAFT

XMA3.5G22N	3.5	13.2	2200	150	5	15	15.4	1	14
------------	-----	------	------	-----	---	----	------	---	----

Oil Capacity = 14.5 oz

Maximum Fluid Temperature = 140° F

Inlet Thread = 1/2" F

Discharge Thread = 3/8" F

## RAIL KITS

AR 2633 1-3/4"  
AR 2633H 2-5/8"

**SPECIAL NOTE:** Use AR64516 Oil. First change oil after 50 hours of use. Then every 500 hours. This oil is specially formulated to provide correct lubrication properties for our pumps. **No** other oil is factory approved for these pumps.

\*Available upon special request (non-stock item)



# XMA / XMV - Triplex Plunger Pumps



## FEATURING

**MANIFOLD:** High strength forged brass for long term use.

**BOLTS:** Eight 6mm grade 12.9.

**PLUNGERS:** A special thick solid ceramic for long life, strong durability and more resilience.

**CRANKCASE:** Precision die-cast, large cooling fins and anodized for maximum heat dissipation. Sight glass, fill and side and bottom drain plugs.

**BEARINGS:** Oversized for maximum life and load disbursement, needle bearing on the drive side and ball on the non-drive side. Each bearing is held in position on the crankshaft and crankcase by snap rings. This assures positive alignment and centering of the connecting rods and crankshaft in relation to the crankcase, it also eliminates the crankshaft from floating.

**VALVES, SEATS, AND SPRINGS:** Stainless steel with specially designed Ultra Form material valve cages that are impervious to water absorption and provide long life and positive seating.

**SEALS AND V-PACKINGS:** Continuously lubricating for extended life.

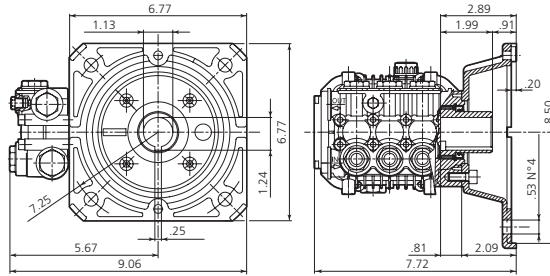
**PLUNGER RODS:** High strength stainless steel.

**CONNECTING RODS:** One piece special alloy aluminum based, oversized for maximum strength, load disbursement, and long life. Heavy pin area construction, for added load strength.

## DIMENSIONS

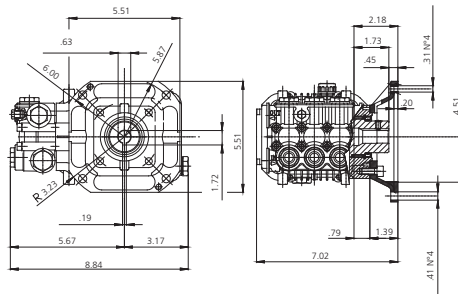
XMA

E version 1" 1/8 + F17  
Hollow shaft pump  $\phi$  1" 1/8



XMV

E version 5/8 + F33  
Hollow shaft pump  $\phi$  5/8



## XMA 1750 RPM E VERSION 5/8" WITH NEMA 56-C FLANGE

MODEL	MAX GPM	MAX L/MIN	MAX PSI	MAX BAR	POWER EBHP	BORE DIA MM	STROKE MM	CRANKSHAFT ID STAMP	WEIGHT LBS.
XMA2G15E-F33	2.11	8	1500	105	2	15	9.4	7	15
XMA2G22E-F33	2.11	8	2200	150	3	15	9.4	7	15
XMA2.5G18E-F33	2.5	9.5	1800	120	3	15	10.6	5	15
XMA3G18E-F33	3	11.4	1800	120	4	15	13.2	3	15

## XMA 1750 RPM E VERSION 1 1/8" WITH NEMA 182-184 FLANGE

XMA3G25E-F17	3	11.4	2500	170	5	15	13.2	3	15
XMA3G30E-F17	3	11.4	3000	206	6.2	15	13.2	3	15
XMA3.5G25E-F17	3.5	13.2	2500	170	5.5	15	15.4	1	15

Oil Capacity = 14.5 oz

Maximum Fluid Temperature = 140° F

Inlet Thread = 1/2" F

Discharge Thread = 3/8" F

## XMV 3400 RPM E VERSION 5/8" WITH NEMA 56-C FLANGE

XMV2G25E-F33	2.11	8	2500	172	5	15	4.8	12	15
XMV3.5G20E-F33	3.5	13	2000	138	4.8	15	8.2	8	15

Oil Capacity = 14.6 oz

Maximum Fluid Temperature = 140° F

Inlet Thread = 1/2" F

Discharge Thread = 3/8" F

**SPECIAL NOTE:** Use AR64516 Oil. First change oil after 50 hours of use. Then every 500 hours. This oil is specially formulated to provide correct lubrication properties for our pumps. **No** other oil is factory approved for these pumps.

\*Available upon special request (non-stock item)

# XMV - Triplex Plunger Pumps



## FEATURING

**MANIFOLD:** High strength forged brass for long term use.

**BOLTS:** Eight 6mm grade 12.9.

**PLUNGERS:** A special thick solid ceramic for long life, strong durability and more resilience.

**CRANKCASE:** Precision die-cast, large cooling fins and anodized for maximum heat dissipation. Sight glass, fill and side and bottom drain plugs.

**BEARINGS:** Oversized for maximum life and load disbursement, needle bearing on the drive side and ball on the non-drive side. Each bearing is held in position on the crankshaft and crankcase by snap rings. This assures positive alignment and centering of the connecting rods and crankshaft in relation to the crankcase, it also eliminates the crankshaft from floating.

**VALVES, SEATS, AND SPRINGS:** Stainless steel with specially designed Ultra Form cages provide extra long life and positive seating.

**SEALS AND V-PACKINGS:** Continuously lubricating for extended life.

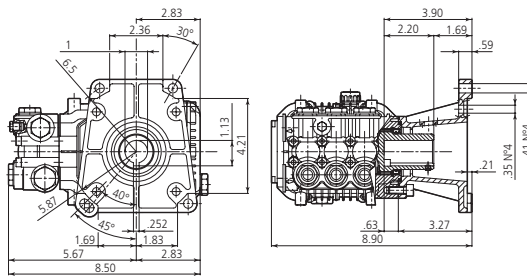
**PLUNGER RODS:** High strength stainless steel.

**CONNECTING RODS:** One piece special alloy aluminum based, oversized for maximum strength, load disbursement, and long life. Heavy pin area construction, for added load strength.

## DIMENSIONS

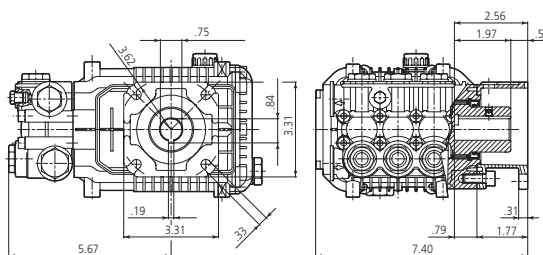
XMV

D version + F24  
Hollow shaft pump  $\phi$  1"



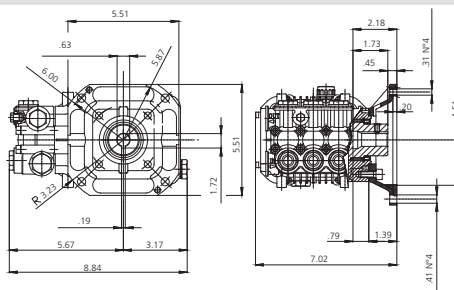
XMV

D version + F25  
Hollow shaft pump  $\phi$  3/4"



XMV

D version 3/4 + F33  
Hollow shaft pump  $\phi$  3/4"



## XMV 3400 RPM D VERSION 3/4" WITH GAS ENGINE FLANGE

MODEL	MAX GPM	MAX L/MIN	MAX PSI	MAX BAR	POWER EBHP	BORE DIA MM	STROKE MM	CRANKSHAFT ID STAMP	WEIGHT LBS.
XMV2.5G26D-F25	2.5	9.5	2600	179	5	15	6.2	10	15
XMV3G25D-F25	3	11.4	2500	170	5	15	7.6	9	15
XMV3G27D-F25	3	11.4	2700	186	5	15	7.6	9	15
XMV3.5G25D-F25	3.5	13.2	2500	170	5.5	15	8.2	8	15

## XMV 3400 RPM D VERSION 1" WITH GAS ENGINE FLANGE

XMV3G30D-F24	3	11.4	3000	205	5.5	15	7.6	9	16
XMV3G32D-F24	3	11.4	3200	220	5.5	15	7.6	9	16
XMV3.5G25D-F24	3.5	13.2	2500	170	5.5	15	8.2	8	16
XMV3.5G30D-F24	3.5	13.2	3000	205	7	15	8.2	8	16
XMV4G30D-F24	4	15.1	3000	205	7.5	15	9.4	7	16
XMV4G32D-F24	4	15.1	3200	221	10	15	9.4	7	16

## XMV 3400 RPM D VERSION 3/4" WITH NEMA 56-C FLANGE

XMV3.5G25D-F33	3.5	13.2	2500	170	5.5	15	8.2	8	15
----------------	-----	------	------	-----	-----	----	-----	---	----

Oil Capacity = 14.6 oz

Maximum Fluid Temperature = 140° F

Inlet Thread = 1/2" F

Discharge Thread = 3/8" F

**SPECIAL NOTE:** Use AR64516 Oil. First change oil after 50 hours of use. Then every 500 hours. This oil is specially formulated to provide correct lubrication properties for our pumps. **No** other oil is factory approved for these pumps.

\*Available upon special request (non-stock item)

# SXMA / SXMV - Triplex Plunger Pumps



## FEATURING

**MANIFOLD:** High strength forged brass for long term use.

**BOLTS:** Eight 6mm grade 12.9.

**PLUNGERS:** A special thick solid ceramic for long life, strong durability and more resilience.

**CRANKCASE:** Precision die-cast, large cooling fins and anodized for maximum heat dissipation. Sight glass, fill and side and bottom drain plugs.

**BEARINGS:** Oversized for maximum life and load disbursement, needle bearing on the drive side and ball on the non-drive side. Each bearing is held in position on the crankshaft and crankcase by snap rings. This assures positive alignment and centering of the connecting rods and crankshaft in relation to the crankcase, it also eliminates the crankshaft from floating.

**VALVES, SEATS, AND SPRINGS:** Stainless steel with specially designed Ultra Form cages provide extra long life and positive seating.

**SEALS AND V-PACKINGS:** Continuously lubricating for extended life.

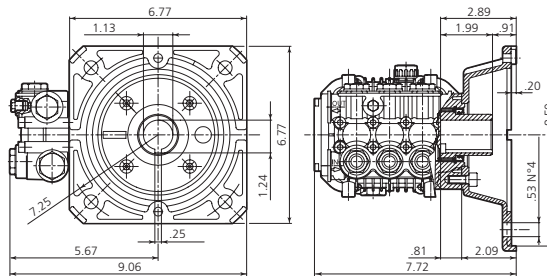
**PLUNGER RODS:** High strength stainless steel.

**CONNECTING RODS:** One piece special alloy aluminum based (SXM series has bronze rods), oversized for maximum strength, load disbursement, and long life. Heavy pin area construction, for added load strength.

## DIMENSIONS

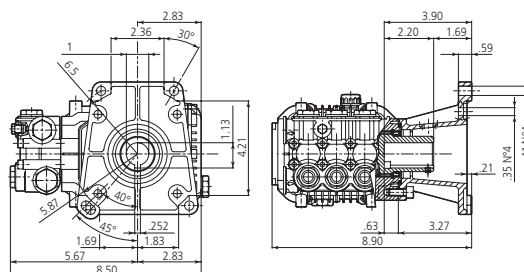
### SXMA

E version 1" 1/8 + F17  
Hollow shaft pump  $\phi$  1" 1/8



### SXMV

D version + F24  
Hollow shaft pump  $\phi$  1"



## SXMA 1750 RPM E VERSION 1 1/8" WITH NEMA 182-184 FLANGE

MODEL	MAX GPM	MAX L/MIN	MAX PSI	MAX BAR	POWER EBHP	BORE DIA MM	STROKE MM	CRANKSHAFT ID STAMP	WEIGHT LBS.
SXMA3G35E-F17	3	11.4	3500	240	7	15	13.2	3	18
SXMA3.5G30E-F17*	3.5	13.2	3000	205	7	15	15.4	1	18
SXMA4G30E-F17	4	15.1	3000	205	7.5	18	13.2	3	18

## SXMV 3400 RPM D VERSION 1" WITH GAS ENGINE FLANGE

SXMV3G40D-F24	3	11.4	4000	275	7.5	15	7.6	9	16
SXMV3.5G35D-F24	3.5	13.2	3500	240	8.4	15	8.2	8	16
SXMV3.5G40D-F24	3.5	13.2	4000	275	8.5	15	8.2	8	16
SXMV4G35D-F24	4	15.1	3500	240	10	15	9.4	7	16
SXMV4G40D-F24	4	15.1	4000	275	12	15	9.4	7	16

Oil Capacity = 14.6 oz

Maximum Fluid Temperature = 140° F

Inlet Thread = 1/2" F

Discharge Thread = 3/8" F

**SPECIAL NOTE:** Use AR64516 Oil. First change oil after 50 hours of use. Then every 500 hours. This oil is specially formulated to provide correct lubrication properties for our pumps. **No** other oil is factory approved for these pumps.

\*Available upon special request (non-stock item)

# RK / RKA - Triplex Plunger Pumps



## FEATURING

**MANIFOLD:** High strength forged brass or nickel plated for long term use.

**BOLTS:** Eight 8mm grade 8.8.

**PLUNGERS:** A special thick solid ceramic for long life, strong durability and more resilience.

**CRANKCASE:** Precision die-cast, large cooling fins and anodized for maximum heat dissipation. Sight glass, fill and side and bottom drain plugs.

**BEARINGS:** Oversized tapered roller bearing for maximum life and load disbursement.

**BEARING SUPPORT:** Precision die-cast and machined to assure concentricity and alignment.

**VALVES, SEATS, AND SPRINGS:** Stainless steel with specially designed Ultra Form cages to provide long life and positive seating.

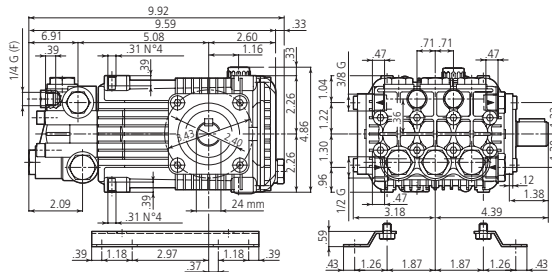
**SEALS AND V-PACKINGS:** Continuously lubricating for extended life.

**PLUNGER RODS:** Stainless steel construction for strength, no plating to scrape off, back-up and o-ring plunger sealing system.

**CONNECTING RODS:** One piece special alloy aluminum or bronze for higher pressure, oversized for maximum strength, load disbursement, and long life. Heavy pin area construction, for added load strength.

## DIMENSIONS

RK / RKA N version  
Solid shaft pump / ø 24 mm



## RK 1450 RPM N VERSION 24MM SOLID SHAFT

MODEL	MAX GPM	MAX L/MIN	MAX PSI	MAX BAR	POWER EBHP	BORE DIA MM	STROKE MM	CRANKSHAFT ID STAMP	WEIGHT LBS.
RK15.28HN	3.96	15	4000	275	11	18	14.6	1	20
RK18.28HN	4.75	18	4000	275	13	20	14.6	1	20
RK21.20NL	5.55	21	2900	200	11	22	13.8	2	20
RKA7G20HN	5.9	26.8	2000	140	11	22	14.6	1	20

## RKA 1750 RPM N VERSION 24MM SOLID SHAFT

RKA3.5G25N	3.5	13.2	2500	170	5	18	10.8	5	19
RKA3.5G30N	3.5	13.2	3000	205	7.5	18	10.8	5	19
RKA3.5G40HN	3.5	13.2	4000	275	10	18	10.8	5	20
RKA4G20N	4	15.1	2000	140	5	18	12	4	19
RKA4G30N	4	15.1	3000	205	7.5	18	12	4	19
RKA4G35N	4	15.1	3500	241	10	18	12	4	20
RKA4G35NL	4	15.1	3500	241	10	18	12	4	20
RKA4G40HN	4	15.1	4000	275	11	18	12	4	20
RKA4G40HNL	4	15.1	4000	275	11	18	12	4	20
RKA4.5G35HN	4.5	17	3500	241	11	18	13.8	2	20
RKA5.5G30HN	5.5	20.8	3000	205	11	20	13.8	2	20
RKA6.5G20HN*	6.6	25	2000	138	9	22	13.8	2	20
RKA7G20HN	7.1	27	2000	138	10	22	14.6	1	20

Oil Capacity = 15 oz

Maximum Fluid Temperature = 140° F

Inlet Thread = 1/2" F

Discharge Thread = 3/8" F

AR 1837 5/8"

AR 2633 1-3/4"

AR 2633H 2-5/8"

**SPECIAL NOTE:** Use AR64516 Oil. First change oil after 50 hours of use. Then every 500 hours. This oil is specially formulated to provide correct lubrication properties for our pumps. **No** other oil is factory approved for these pumps.

\*Available upon special request (non-stock item)

# RKA / RKV - Triplex Plunger Pumps



## FEATURING

**MANIFOLD:** High strength forged brass or nickel plated for long term use.

**BOLTS:** Eight 8mm grade 8.8.

**PLUNGERS:** A special thick solid ceramic for long life, strong durability and more resilience.

**CRANKCASE:** Precision die-cast, large cooling fins and anodized for maximum heat dissipation. Sight glass, fill and side and bottom drain plugs.

**BEARINGS:** Oversized tapered roller bearing for maximum life and load disbursement.

**BEARING SUPPORT:** Precision die-cast and machined to assure concentricity and alignment.

**VALVES, SEATS, AND SPRINGS:** Stainless steel with specially designed Ultra Form cages to provide long life and positive seating.

**SEALS AND V-PACKINGS:** Continuously lubricating for extended life.

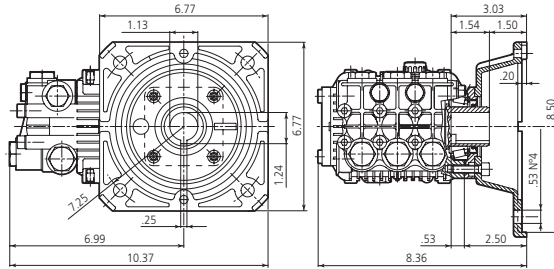
**PLUNGER RODS:** Stainless steel construction for strength, no plating to scrape off, back-up and o-ring plunger sealing system.

**CONNECTING RODS:** One piece special alloy aluminum or bronze for higher pressure, oversized for maximum strength, load disbursement, and long life. Heavy pin area construction, for added load strength.

## DIMENSIONS

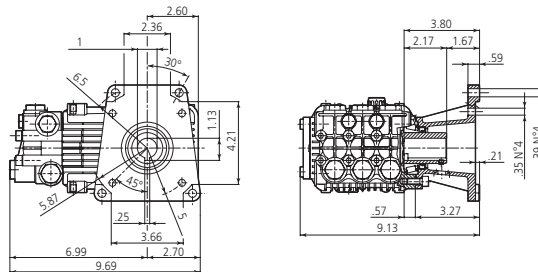
RKA

E version + F17  
Hollow shaft pump  $\varnothing$  1 1/8"



RKV

D version + F24  
Hollow shaft pump  $\varnothing$  1"



## RKA 1750 RPM E VERSION 1 1/8" WITH NEMA 182-184 FLANGE

MODEL	MAX GPM	MAX L/MIN	MAX PSI	MAX BAR	POWER EBHP	BORE DIA MM	STROKE MM	CRANKSHAFT ID STAMP	WEIGHT LBS.
RKA3.5G30E-F17	3.5	13.2	3000	205	7.5	18	10.8	5	21
RKA3.5G40HE-F17	3.5	13.2	4000	275	9.6	18	10.8	5	21
RKA4G20E-F17	4	15.1	2000	140	5	18	12	4	21
RKA4G30E-F17	4	15.1	3000	205	7.5	18	12	4	21
RKA4G30HE-F17	4	15.1	3000	205	7.5	18	12	4	21
RKA4.8G30E-F17	4.8	18.2	3000	205	10	20	12	4	21
RKA5.5G13E-F17	5.5	20.8	1300	90	5	20	13.8	2	21
RKA7G20HE-F17	7.1	27	2000	138	10	22	14.6	1	21

## RKV 3400 RPM D VERSION 1" WITH GAS ENGINE FLANGE

RKV3.5G30AD-F24	3.5	13.2	3000	205	7.5	18	6.2	9	21
RKV3.5G35D-F24	3.5	13.2	3500	240	8.4	18	6.2	9	21
RKV3.5G40HD-F24	3.5	13.2	4000	275	10	18	6.2	9	21
RKV4G30AD-F24	4	15.1	3000	205	7.5	18	7	8	21
RKV4G32D-F24	4	15.1	3200	220	7.5	18	7	8	21
RKV4G35HD-F24	4	15.1	3500	240	7.5	18	7	8	21
RKV4G37D-F24	4	15.1	3700	255	7.5	18	7	8	21
RKV4G40HD-F24	4	15.1	4000	275	11	18	7	8	21
RKV4.5G32D-F24	4.5	17	3200	220	12	18	8	8	21
RKV4.5G40HD-F24	4.5	17	4000	275	12	18	8	7	21
RKV5G40HD-F24	5	18.3	4000	275	13.7	18	8.6	11	21
RKV5.5G40HD-F24	5.5	20.8	4000	275	15	18	9.8	6	21

Oil Capacity = 15 oz

Maximum Fluid Temperature = 140° F

Inlet Thread = 1/2" F

Discharge Thread = 3/8" F

**SPECIAL NOTE:** Use AR64516 Oil. First change oil after 50 hours of use. Then every 500 hours. This oil is specially formulated to provide correct lubrication properties for our pumps. **No** other oil is factory approved for these pumps.

\*Available upon special request (non-stock item)



# GRKV - Triplex Plunger Pumps



## FEATURING

**MANIFOLD:** High strength forged brass for long term use.

**BOLTS:** Eight 10mm grade 8.8.

**PLUNGERS:** A special thick solid ceramic for long life, strong durability and more resilience.

**CRANKCASE:** Precision die-cast, large cooling fins and anodized for maximum heat dissipation. Sight glass, fill and side and bottom drain plugs.

**BEARINGS:** Oversized tapered roller bearing for maximum life and load disbursement.

**BEARING SUPPORT:** Precision die-cast and machined to assure concentricity and alignment.

**VALVES, SEATS, AND SPRINGS:** Stainless steel with specially designed Ultra Form cages to provide extra long life and positive seating.

**SEALS AND V-PACKINGS:** Continuously lubricating for extended life.

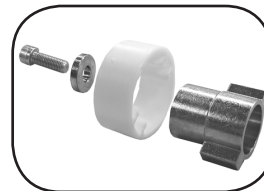
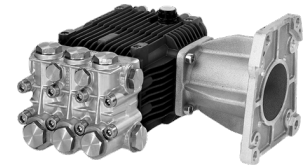
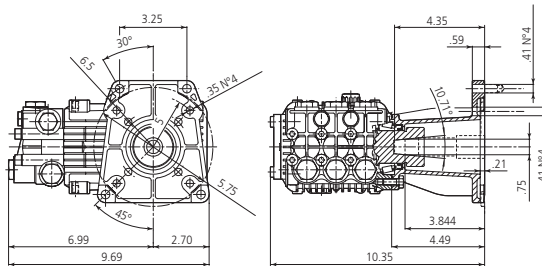
**PLUNGER RODS:** Stainless steel construction for strength, no plating to scrape off, back-up and o-ring plunger sealing system.

**CONNECTING RODS:** One piece special alloy aluminum or bronze for higher pressure, oversized for maximum strength, load disbursement, and long life. Heavy pin area construction, for added load strength.

## DIMENSIONS

GRKV

V version + F35  
Conical hollow shaft pump



MOUNTING HARDWARE  
AR2504

**PATENTED TAPERED HOLLOW SHAFT  
FOR COUPLING TO TAPERED SHAFT ENGINES**

## GRKV 3400 RPM V VERSION 1" WITH TAPERED GAS ENGINE FLANGE

MODEL	MAX GPM	MAX L/MIN	MAX PSI	MAX BAR	POWER EBHP	BORE DIA MM	STROKE MM	CRANKSHAFT ID STAMP	WEIGHT LBS.
GRKV4G35HV-F35	4	15.1	3500	240	9.5	18	7	8	23
Oil Capacity = 15 oz		Maximum Fluid Temperature = 140° F			Inlet Thread = 1/2" F		Discharge Thread = 3/8" F		

**NEW**



## RKA 1750 RPM J VERSION 1" SHAFT FOR ENGINE WITH INTERNAL GEAR BOX

MODEL	MAX GPM	MAX L/MIN	MAX PSI	MAX BAR	POWER EBHP	BORE DIA MM	STROKE MM	CRANKSHAFT ID STAMP	WEIGHT LBS.
RKA4G40HJ-F22	4	15.1	4000	275	11	18	12	4	20
Oil Capacity = 15 oz		Maximum Fluid Temperature = 140° F			Inlet Thread = 1/2" F		Discharge Thread = 3/8" F		

**SPECIAL NOTE:** Use AR64516 Oil. First change oil after 50 hours of use. Then every 500 hours. This oil is specially formulated to provide correct lubrication properties for our pumps. **No** other oil is factory approved for these pumps.

\*Available upon special request (non-stock item)



# RW - Triplex Plunger Pump



## FEATURING

**MANIFOLD:** Forged Brass for strength and no porosity and long life. Higher hydrostatic pressures for safety and performance.

**BOLTS:** Eight 10mm grade 8.8.

**PLUNGERS:** Are a special aluminum oxide blend, solid ceramic for long life, strong durability and more resilient. Ultra thick with SST retaining bolt.

**CRANKCASE:** Precision die-cast, large cross head for strength, large cooling fins and anodized (for maximum heat dissipation).

**BEARINGS:** Oversized for maximum life and load disbursement.

**VALVES, SEATS, AND SPRINGS:** Stainless steel with specially designed Ultra Form cages to provide long life and positive seating.

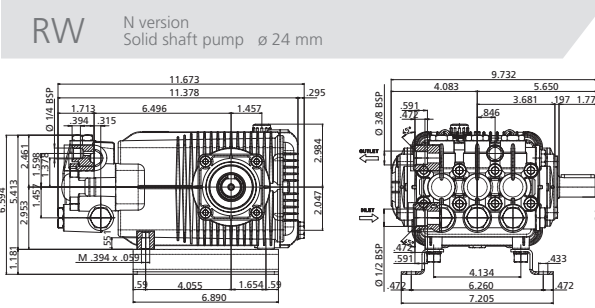
**SEALS AND PACKINGS:** High pressure packings "V" style (D-1) and lowpressure seals "Special profile" style (W-2) Buna-N (cotton duct weave base) strong and tightens under load. Top support ring.

**OIL SEALS:** All are constructed of Buna-N rubber

**PLUNGER RODS:** Stainless steel construction for strength (no plating to scrape off), back-up and O-ring plunger sealing system.

**CONNECTING RODS:** Heavy 1-piece special alloy aluminum based, oversized for maximum strength, load disbursement, and life. Heavy pin area construction, for added load strength.

## DIMENSIONS



## RW 1450 RPM N VERSION 24MM SOLID SHAFT

MODEL	MAX GPM	MAX L/MIN	MAX PSI	MAX BAR	POWER EBHP	BORE DIA MM	STROKE MM	CRANKSHAFT ID STAMP	WEIGHT LBS.
RW15	4	15	3500	241	9.6	18	14.6	3	31
RW21	5.5	21	3500	241	13.2	18	19.8	1	31

## RW 1750 RPM N VERSION 24MM SOLID SHAFT

RW15	4.8	18	3500	241	9.6	18	14.6	3	31
------	-----	----	------	-----	-----	----	------	---	----

Oil Capacity = 32 oz

Maximum Fluid Temperature = 140° F

Inlet Thread = 1/2" F

Discharge Thread = 3/8" F

**SPECIAL NOTE:** Use AR64516 Oil. First change oil after 50 hours of use. Then every 500 hours. This oil is specially formulated to provide correct lubrication properties for our pumps. **No** other oil is factory approved for these pumps.

\*Available upon special request (non-stock item)

# XW - Triplex Plunger Pumps



## FEATURING

**MANIFOLD:** High strength forged brass for long term use.

**BOLTS:** Eight 10mm grade 8.8.

**PLUNGERS:** A special thick solid ceramic for long life, strong durability and more resilience.

**CRANKCASE:** Precision die-cast, large cooling fins and anodized for maximum heat dissipation. Bayonet style sight glass located in the rear and side cover, fill and side and bottom drain plugs.

**BEARINGS:** Oversized premium tapered roller bearing for maximum life and load disbursement.

**BEARING SUPPORT:** Precision die-cast and machined to assure concentricity, alignment and strength.

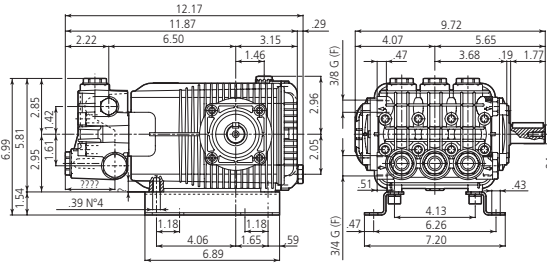
**VALVES, SEATS, AND SPRINGS:** Stainless steel with specially designed Ultra Form cages to provide long life and positive seating.

**SEALS AND U-PACKING:** Continuously lubricating for extended life. Triple lip oil seal for assured crankcase seal.

**PLUNGER RODS:** High strength stainless steel, for heavy duty use.

**CONNECTING RODS:** Two-piece special alloy aluminum based material, oversized for maximum strength, load disbursement, and long life. Heavy pin area construction, for added load strength.

XW / XWA N version Solid shaft pump ø 24 mm



**PATENTED VALVE CAP DESIGN.**

\*XW-M & XWA-M series pumps features new plunger and packing system.

## XW 1450 RPM N VERSION 24MM SOLID SHAFT

MODEL	MAX GPM	MAX L/MIN	MAX PSI	MAX BAR	POWER EBHP	BORE DIA MM	STROKE MM	CRANKSHAFT ID STAMP	WEIGHT LBS.
XW-M15.30	3.96	15	4350	300	12	20	12.2	5	34
XW-M21.28	5.55	21	4060	280	15	20	16.6	3	34
XW-M26.23	6.87	26	3600	250	12.5	20	19.8	1	34
XW30.25	7.92	30	3600	250	19	22	19.8	1	34

## XWA 1750 RPM N VERSION 24MM SOLID SHAFT

XWA-M4G40N	4	15	4000	275	11	20	13.8	6	34
XWA-M5.5G40N	5.5	21	4000	275	14	20	13.8	4	34
XWA-M7G40N	7	25.5	4000	275	17	20	17.2	2	34
XWA-M8G35N	8	30	3500	240	18	20	19.8	1	34
XWA9G30N*	9	34	3000	200	15	22	19.8	1	34

Oil Capacity = 32 oz

Maximum Fluid Temperature = 140° F

Inlet Thread = 3/4" F

Discharge Thread = 3/8" F

## RAIL KITS

AR 2748 1-1/4"

**SPECIAL NOTE:** Use AR64516 Oil. First change oil after 50 hours of use. Then every 500 hours. This oil is specially formulated to provide correct lubrication properties for our pumps. **No** other oil is factory approved for these pumps.

\*Available upon special request (non-stock item)

# XWT / XWF / XWL / XWLA - Triplex Plunger Pumps

## FEATURING

**MANIFOLD:** High strength forged brass for long term use.

**BOLTS:** Eight 10mm grade 8.8.

**PLUNGERS:** A special thick solid ceramic for long life, strong durability and more resilience.

**CRANKCASE:** Precision die-cast, large cooling fins and anodized for maximum heat dissipation. Bayonet style sight glass located in the rear and side cover, fill and side and bottom drain plugs.

**BEARINGS:** Oversized premium tapered roller bearing for maximum life and load disbursement.

**BEARING SUPPORT:** Precision die-cast and machined to assure concentricity, alignment and strength.

**VALVES, SEATS, AND SPRINGS:** Stainless steel with specially designed Ultra Form cages to provide long life and positive seating.

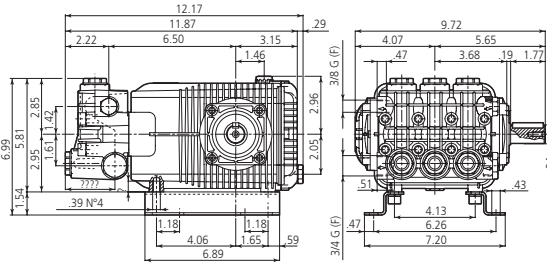
**SEALS AND U-PACKING:** Continuously lubricating for extended life. Triple lip oil seal for assured crankcase seal.

**PLUNGER RODS:** High strength stainless steel, for heavy duty use.

**CONNECTING RODS:** Two-piece special alloy aluminum based material, oversized for maximum strength, load disbursement, and long life. Heavy pin area construction, for added load strength.

## DIMENSIONS

XWT / XWF / XWL / XWLA N version  
Solid shaft pump ø 24 mm



**PATENTED  
VALVE CAP  
DESIGN.**

## XWT 500 RPM N VERSION 24MM SOLID SHAFT

MODEL	MAX GPM	MAX L/MIN	MAX PSI	MAX BAR	POWER EBHP	BORE DIA MM	STROKE MM	CRANKSHAFT ID STAMP	WEIGHT LBS.
XWT21.20N	5.55	21	2900	200	11	28	19.8	1	34

## XWF 1000 RPM N VERSION 24MM SOLID SHAFT

XWF26.20N	6.87	26	2900	200	13	28	15	8	34
XWF30.20N	7.92	30	2900	200	15	28	17.2	2	34
XWF36.17N	9.51	36	2500	170	15	28	19.8	1	34

## XWL 1450 RPM N VERSION 24MM SOLID SHAFT

XWL41.21N	10.8	41	3000	200	22.2	28	17.2	2	34
XWL42.15N	11.09	42	2200	150	16	28	17.2	2	34

## XWLA 1750 RPM N VERSION 24MM SOLID SHAFT

XWLA13G15N	13	49	1450	100	13	28	17.2	2	34
------------	----	----	------	-----	----	----	------	---	----

Oil Capacity = 32 oz

Maximum Fluid Temperature = 140° F

Inlet Thread = 3/4" F

Discharge Thread = 3/8" F

## RAIL KITS

AR 2748 1-1/4"

**SPECIAL NOTE:** Use AR64516 Oil. First change oil after 50 hours of use. Then every 500 hours. This oil is specially formulated to provide correct lubrication properties for our pumps. **No** other oil is factory approved for these pumps.

\*Available upon special request (non-stock item)

# SXW / SXWA - Triplex Plunger Pumps



## FEATURING

**MANIFOLD:** High strength forged brass for long term use.

**BOLTS:** Eight 10mm grade 8.8.

**PLUNGERS:** A special thick solid ceramic for long life, strong durability and more resilience.

**CRANKCASE:** Precision die-cast, large cooling fins and anodized for maximum heat dissipation. Bayonet style sight glass located in the rear and side cover, fill and side and bottom drain plugs.

**BEARINGS:** Oversized premium tapered roller bearing for maximum life and load disbursement.

**BEARING SUPPORT:** Precision die-cast and machined to assure concentricity, alignment and strength.

**VALVES, SEATS, AND SPRINGS:** Stainless steel with specially designed Ultra Form cages to provide long life and positive seating.

**PATENTED  
VALVE CAP  
DESIGN.**

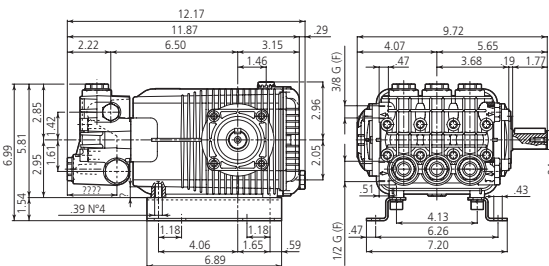
**SEALS AND U-PACKING:** Continuously lubricating for extended life. Triple lip oil seal for assured crankcase seal.

**PLUNGER RODS:** High strength stainless steel, for heavy duty use.

**CONNECTING RODS:** Two-piece special alloy aluminum based material, oversized for maximum strength, load disbursement, and long life. Heavy pin area construction, for added load strength.

## DIMENSIONS

SXW / SXWA N version  
Solid shaft pump ø 24 mm



## SXW 1450 RPM N VERSION 24MM SOLID SHAFT

MODEL	MAX GPM	MAX L/MIN	MAX PSI	MAX BAR	POWER EBHP	BORE DIA MM	STROKE MM	CRANKSHAFT ID STAMP	WEIGHT LBS.
SXW15.35	3.96	15	5100	350	15	18	15	8	35
SXW21.35	5.55	21	5100	350	20	18	21	7	35

## SXWA 1750 RPM N VERSION 24MM SOLID SHAFT

SXWA4G50	4	15.1	5000	345	13	18	12.2	5	35
SXWA5.5G50	5.5	20.8	5000	345	17	18	17.2	2	35
SXWA7G50	7	26.5	5000	345	24	18	21	7	35

Oil Capacity = 32 oz

Maximum Fluid Temperature = 140° F

Inlet Thread = 1/2" F

Discharge Thread = 3/8" F

AR 2748

1-1/4"

**SPECIAL NOTE:** Use AR64516 Oil. First change oil after 50 hours of use. Then every 500 hours. This oil is specially formulated to provide correct lubrication properties for our pumps. **No** other oil is factory approved for these pumps.

\*Available upon special request (non-stock item)

# SHP - Triplex Plunger Pump



## FEATURING

**MANIFOLD:** New high efficiency design concept. (Patented). Forged brass for strength and no porosity for long life and higher hydrostatic pressures.

**BOLTS:** Eight 10mm grade 8.8.

**PLUNGERS:** A special aluminum oxide blend, solid ceramic for long life, strong durability and more resilient. Ultra thick with SST retaining bolt.

**CRANKCASE:** Precision die-cast, large cross head for strength, large cooling fins and anodized for maximum heat dissipation.

**BEARINGS:** Oversized "SKF" taper for maximum life and load disbursement.

**VALVES, SEATS, AND SPRINGS:** Stainless steel with specially designed Ultra Form cages to provide long life and positive seating.

**SEALS AND PACKINGS:** "Special profile" style (W-1 & W-2) Buna-N (cotton duct weave base) strong and tightens under load. Top support ring.

**OIL SEALS:** All are constructed of Buna-N rubber.

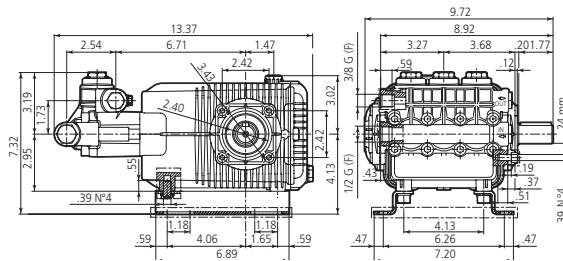
**PLUNGER RODS:** Stainless steel construction for strength (no plating to scrape off), bolt type retainer with a special plunger sealing system.

**CONNECTING RODS:** Heavy 2-piece special allow aluminum based, oversized for maximum strength, load disbursement, and life. Heavy pin area construction, for added load strength.

## DIMENSIONS

SHP

N version  
Solid shaft pump ø 24 mm



PUMP HEAD DESIGN PATENTED

## SHP 1450 RPM N VERSION 24MM SOLID SHAFT

MODEL	MAX GPM	MAX L/MIN	MAX PSI	MAX BAR	POWER EBHP	BORE DIA MM	STROKE MM	CRANKSHAFT ID STAMP	WEIGHT LBS.
SHP15.50N	3.96	15	7250	500	20	18	15	8	29
SHP22.50N	5.8	22	7250	500	27	18	21	7	29

Oil Capacity = 32 oz

Maximum Fluid Temperature = 140° F

Inlet Thread = 1/2" F

Discharge Thread = 3/8" F

**SPECIAL NOTE:** Use AR64516 Oil. First change oil after 50 hours of use. Then every 500 hours. This oil is specially formulated to provide correct lubrication properties for our pumps. **No** other oil is factory approved for these pumps.

\*Available upon special request (non-stock item)





# XMA-SS Stainless Steel Pumps



## FEATURING

**MANIFOLD:** High strength 316L Stainless Steel to insure long term use.

**BOLTS:** 304L stainless steel.

**PLUNGERS:** A special ultra thick solid ceramic for long life, strong durability and more resilience.

**CRANKCASE:** Precision die-cast, large cooling fins and special anticorrosion finish. Both side and rear cover sight glass.

**BEARINGS:** Premium SKF tapered roller bearings that provide extra load support, smoother and lower crankcase running temperatures and overall extended pump life.

**VALVES, SEATS, AND SPRINGS:** Stainless steel with specially designed cages to provide positive seating and extended valve life.

**SEALS AND V-PACKINGS:** Viton are continuously lubricating for extended life. SPL plunger retainers.

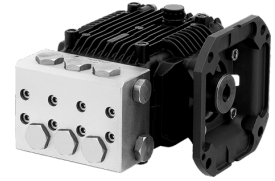
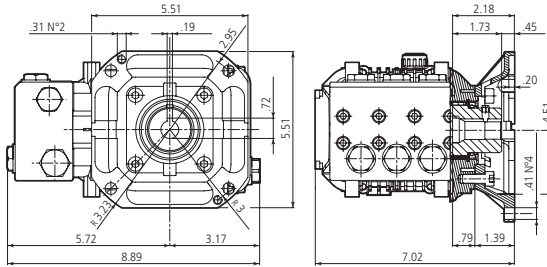
**OIL SEALS:** Triple lipped and spring loaded for greater durability and extended life.

**PLUNGER RODS:** High strength stainless steel.

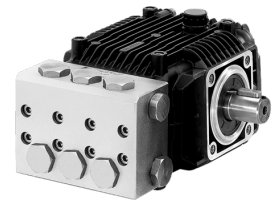
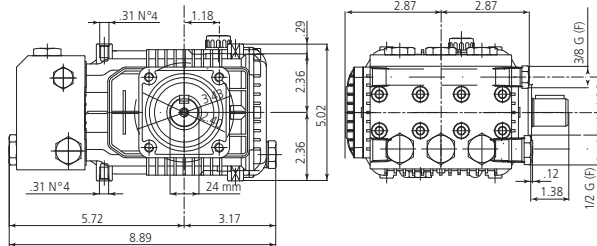
**CONNECTING RODS:** One piece special alloy bronze for higher pressures, oversized for maximum strength, load disbursement, and long life. Heavy pin area construction.

## DIMENSIONS

**XMA-SS** E version + F33  
Hollow shaft pump  $\varnothing$  5/8"



**XMA-SS** N version  
Solid shaft pump  $\varnothing$  24 mm



## XMA-SS 1750 RPM E VERSION 5/8" WITH NEMA 56-C FLANGE

MODEL	MAX GPM	MAX L/MIN	MAX PSI	MAX BAR	POWER EBHP	BORE DIA MM	STROKE MM	CRANKSHAFT ID STAMP	WEIGHT LBS.
XMASS0.5G15E-F33	0.5	1.9	1500	105	0.5	15	2.2	13	17
XMASS2.5G15E-F33	2.5	9.5	1500	105	2.6	15	10.6	5	17
XMASS3G15E-F33	3	11.4	1500	105	3.1	15	13.2	3	17

## XMA-SS 1450 RPM N VERSION 24MM SOLID SHAFT

XMASS3G10N	2.5	9.5	1500	105	2.6	15	13.2	3	17
------------	-----	-----	------	-----	-----	----	------	---	----

## XMA-SS 1750 RPM N VERSION 24MM SOLID SHAFT

XMASS3G10N	3	11.4	1000	103	2.1	15	13.2	3	17
------------	---	------	------	-----	-----	----	------	---	----

Oil Capacity = 14.5 oz

Maximum Fluid Temperature = 140° F

Inlet Thread = 1/2" F

Discharge Thread = 3/8" F

**SPECIAL NOTE:** Use AR64516 Oil. First change oil after 50 hours of use. Then every 500 hours. This oil is specially formulated to provide correct lubrication properties for our pumps. **No** other oil is factory approved for these pumps.

\*Available upon special request (non-stock item)

# RKA-SS Stainless Steel Pumps



## FEATURING

**MANIFOLD:** High strength 316L Stainless Steel to insure long term use.

**BOLTS:** 304L stainless steel.

**PLUNGERS:** A special ultra thick solid ceramic for long life, strong durability and more resilience.

**CRANKCASE:** Precision die-cast, large cooling fins and special anticorrosion finish. Both side and rear cover sight glass.

**BEARINGS:** Premium SKF tapered roller bearings that provide extra load support, smoother and lower crankcase running temperatures and overall extended pump life.

**VALVES, SEATS, AND SPRINGS:** Stainless steel with specially designed cages to provide positive seating and extended valve life.

**SEALS AND V-PACKINGS:** Viton are continuously lubricating for extended life. SPL plunger retainers.

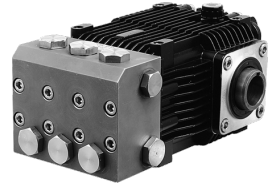
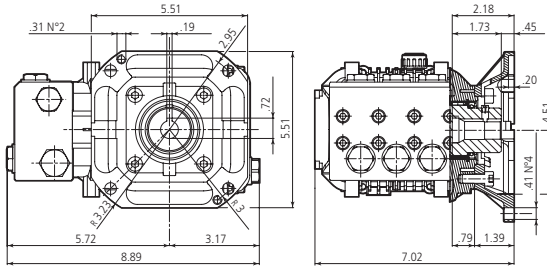
**OIL SEALS:** Triple lipped and spring loaded for greater durability and extended life.

**PLUNGER RODS:** High strength stainless steel.

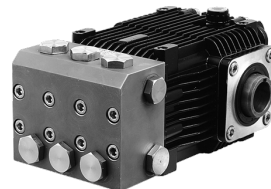
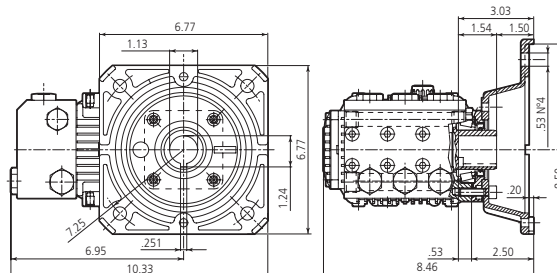
**CONNECTING RODS:** One piece special alloy bronze for higher pressures, oversized for maximum strength, load disbursement, and long life. Heavy pin area construction.

## DIMENSIONS

RKA-SS E version + F33  
Hollow shaft pump  $\varnothing$  5/8"



RKA-SS E version + F17  
Hollow shaft pump  $\varnothing$  1 1/8"



## RKA-SS 1750 RPM E VERSION 5/8" WITH NEMA 56-C FLANGE

MODEL	MAX GPM	MAX L/MIN	MAX PSI	MAX BAR	POWER EBHP	BORE DIA MM	STROKE MM	CRANKSHAFT ID STAMP	WEIGHT LBS.
RKA-SS2.3G15E-F33	2.3	8.7	1500	103	2.4	18	7	8	22
RKA-SS3G15E-F33	3	11.4	1500	103	3	18	9.8	6	22
RKA-SS3.6G12E-F33	3.6	13.6	1500	103	3	18	11.2	10	22
RKA-SS4.2G15E-F33	4.2	15.9	1500	103	4.3	18	12	4	22

## RKA-SS 1750 RPM E VERSION 1 1/8" WITH NEMA 182-184 FLANGE

RKA-SS2.3G15E-F17	2.3	8.7	1500	103	2.4	18	7	8	22
RKA-SS3G15E-F17	3	11.4	1500	103	3	18	9.8	6	22
RKA-SS3.6G12E-F17	3.6	13.6	1500	103	3	18	11.2	10	22
RKA-SS4.2G15E-F17	4.2	15.9	1500	103	4.3	18	12	4	22

Oil Capacity = 15 oz

Maximum Fluid Temperature = 140° F

Inlet Thread = 1/2" F

Discharge Thread = 3/8" F

**SPECIAL NOTE:** Use AR64516 Oil. First change oil after 50 hours of use. Then every 500 hours. This oil is specially formulated to provide correct lubrication properties for our pumps. **No** other oil is factory approved for these pumps.

\*Available upon special request (non-stock item)

# RK-SS / RKA-SS Stainless Steel Pumps



## FEATURING

**MANIFOLD:** High strength 316L Stainless Steel to insure long term use.

**BOLTS:** 304L stainless steel.

**PLUNGERS:** A special ultra thick solid ceramic for long life, strong durability and more resilience.

**CRANKCASE:** Precision die-cast, large cooling fins and special anticorrosion finish. Both side and rear cover sight glass.

**BEARINGS:** Premium SKF tapered roller bearings that provide extra load support, smoother and lower crankcase running temperatures and overall extended pump life.

**VALVES, SEATS, AND SPRINGS:** Stainless steel with specially designed cages to provide positive seating and extended valve life.

**SEALS AND V-PACKINGS:** Viton are continuously lubricating for extended life. SPL plunger retainers.

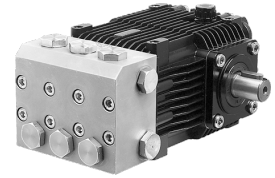
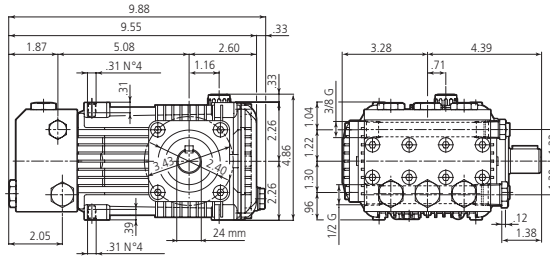
**OIL SEALS:** Triple lipped and spring loaded for greater durability and extended life.

**PLUNGER RODS:** High strength stainless steel.

**CONNECTING RODS:** One piece special alloy bronze for higher pressures, oversized for maximum strength, load disbursement, and long life. Heavy pin area construction.

## DIMENSIONS

RK-SS / RKA-SS N version  
Solid shaft pump ø 24 mm



## RK-SS 1450 RPM N VERSION 24MM SOLID SHAFT

MODEL	MAX GPM	MAX L/MIN	MAX PSI	MAX BAR	POWER EBHP	BORE DIA MM	STROKE MM	CRANKSHAFT ID	WEIGHT LBS.
RK-SS11.11N	2.9	11	1600	110	3	18	10.8	5	22
RK-SS13.17N	3.43	13	2500	170	5.5	18	12.8	3	22
RK-SS15.15N	3.96	15	2200	150	5.5	18	14.6	1	22

## RKA-SS 1750 RPM N VERSION 24MM SOLID SHAFT

RKA-SS2.3G15N*	2.3	8.7	1500	103	2.5	18	7	8	22
RKA-SS3G15N*	3	11.4	1500	103	3	18	9.8	6	22
RKA-SS3.6G12N*	3.6	13.6	1500	103	3	18	11.2	10	22
RKA-SS4.2G15N*	4.2	15.9	1500	103	4.3	18	12	4	22

Oil Capacity = 15 oz

Maximum Fluid Temperature = 140° F

Inlet Thread = 1/2" F

Discharge Thread = 3/8" F

## RAIL KITS

AR 1837	5/8"
AR 2633	1-3/4"
AR 2633H	2-5/8"

**SPECIAL NOTE:** Use AR64516 Oil. First change oil after 50 hours of use. Then every 500 hours. This oil is specially formulated to provide correct lubrication properties for our pumps. **No** other oil is factory approved for these pumps.

\*Available upon special request (non-stock item)

# XWL-SS Stainless Steel Pumps



## FEATURING

**MANIFOLD:** High strength 316L Stainless Steel to insure long term use.

**BOLTS:** 304L stainless steel.

**PLUNGERS:** A special ultra thick solid ceramic for long life, strong durability and more resilience.

**CRANKCASE:** Precision die-cast, large cooling fins and special anticorrosion finish. Both side and rear cover sight glass.

**BEARINGS:** Premium SKF tapered roller bearings that provide extra load support, smoother and lower crankcase running temperatures and overall extended pump life.

**VALVES, SEATS, AND SPRINGS:** Stainless steel with specially designed cages to provide positive seating and extended valve life.

**SEALS AND V-PACKINGS:** Viton are continuously lubricating for extended life. SPL plunger retainers.

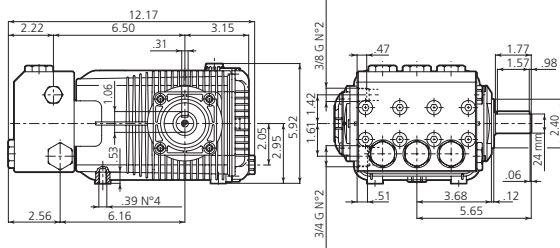
**OIL SEALS:** Triple lipped and spring loaded for greater durability and extended life.

**PLUNGER RODS:** High strength stainless steel.

**CONNECTING RODS:** One piece special alloy bronze for higher pressures, oversized for maximum strength, load disbursement, and long life. Heavy pin area construction.

## DIMENSIONS

XWL-SS N version  
Solid shaft pump ø 24 mm



## XWL-SS 1450 RPM N VERSION 24MM SOLID SHAFT

MODEL	MAX GPM	MAX L/MIN	MAX PSI	MAX BAR	POWER EBHP	BORE DIA MM	STROKE MM	CRANKSHAFT ID STAMP	WEIGHT LBS.
XWL-SS42.15N	11	42	2200	150	15	28	17.2	2	36
XWL-SS12G22N	10	38	2200	150	14	28	15	8	36

## XWLA-SS 1750 RPM N VERSION 24MM SOLID SHAFT

MODEL	MAX GPM	MAX L/MIN	MAX PSI	MAX BAR	POWER EBHP	BORE DIA MM	STROKE MM	CRANKSHAFT ID STAMP	WEIGHT LBS.
XWLA-SS12G22N	12	45	2200	150	17.5	28	15	8	36

Oil Capacity = 32 oz

Maximum Fluid Temperature = 160° F

Inlet Thread = 3/4" F

Discharge Thread = 3/8" F

## RAIL KITS

AR 1837	5/8"
AR 2633	1-3/4"
AR 2633H	2-5/8"

**SPECIAL NOTE:** Use AR64516 Oil. First change oil after 50 hours of use. Then every 500 hours. This oil is specially formulated to provide correct lubrication properties for our pumps. **No** other oil is factory approved for these pumps.

\*Available upon special request (non-stock item)

# RCW - Car Wash Pumps



## FEATURING

**MANIFOLD:** High strength forged brass for long term use.

**BOLTS:** Eight 8mm stainless steel.

**PLUNGERS:** A special ultra thick solid ceramic for long life, strong durability and more resilience.

**CRANKCASE:** Precision die-cast, large cooling fins and anodized for maximum heat dissipation.

**BEARINGS:** Premium SKF tapered roller bearings that provide extra load support, smoother and lower crankcase running temperatures and overall extended pump life.

**VALVES, SEATS, AND SPRINGS:** Stainless steel with specially designed cages to provide positive seating and extended valve life.

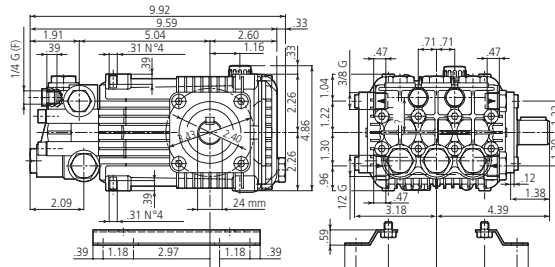
**SEALS AND V-PACKINGS:** Continuously lubricating for extended life.

**PLUNGER RODS:** High strength stainless steel.

**CONNECTING RODS:** One piece special alloy aluminum based, oversized for maximum strength, load disbursement, and long life. Heavy pin area construction, for added load strength.

## DIMENSIONS

RCW N version  
Solid shaft pump ø 24 mm



## RCW 950 RPM N VERSION 24MM SOLID SHAFT

MODEL	MAX GPM	MAX L/MIN	MAX PSI	MAX BAR	POWER EBHP	BORE DIA MM	STROKE MM	CRANKSHAFT ID STAMP	WEIGHT LBS.
RCW10.15N	2.65	10	2200	150	4	18	14.6	1	21
RCW15.14N	3.96	15	2000	140	5.5	22	13.8	2	21

## RCW 1450 RPM N VERSION 24MM SOLID SHAFT

RCW11.10N	2.9	11	1450	100	2.5	18	10.8	5	21
RCW15.15N	3.96	15	2200	150	5.5	18	14.6	1	21

Oil Capacity = 15 oz

Maximum Fluid Temperature = 140° F

Inlet Thread = 1/2" F

Discharge Thread = 3/8" F

## RAIL KITS

AR 1837	5/8"
AR 2633	1-3/4"
AR 2633H	2-5/8"

**SPECIAL NOTE:** Use AR64516 Oil. First change oil after 50 hours of use. Then every 500 hours. This oil is specially formulated to provide correct lubrication properties for our pumps. **No** other oil is factory approved for these pumps.

\*Available upon special request (non-stock item)

# CWX - Car Wash Pumps



## FEATURING

**MANIFOLD:** High strength forged brass for long term use.

**BOLTS:** Eight 10mm grade 8.8.

**PLUNGERS:** A special thick solid ceramic for long life, strong durability and more resilience.

**CRANKCASE:** Precision die-cast, large cooling fins and anodized for maximum heat dissipation. Bayonet style sight glass located in the rear and side cover, fill and side and bottom drain plugs.

**BEARINGS:** Premium SKF tapered roller bearings that provide extra load support, smoother and lower crankcase running temperatures and overall extended pump life.

**VALVES, SEATS, AND SPRINGS:** Stainless steel with specially designed cages to provide positive seating and extended valve life.

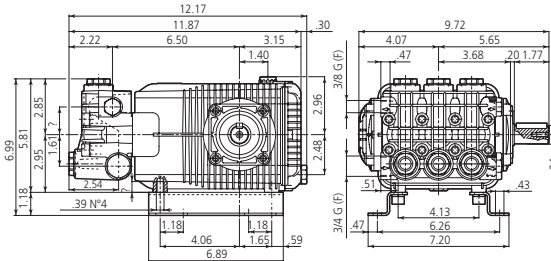
**SEALS AND V-PACKINGS:** Continuously lubricating for extended life.

**PLUNGER RODS:** High strength stainless steel.

**CONNECTING RODS:** Two-piece special alloy aluminum based, oversized for maximum strength, load disbursement, and long life. Heavy pin area construction, for added load strength.

## DIMENSIONS

CWX N version  
Solid shaft pump ø 24 mm



## CWX 950 RPM N VERSION 24MM SOLID SHAFT

MODEL	MAX GPM	MAX L/MIN	MAX PSI	MAX BAR	POWER EBHP	BORE DIA MM	STROKE MM	CRANKSHAFT ID STAMP	WEIGHT LBS.
CWX15.17N	3.96	15	2500	170	7.5	20	16.6	3	32

## CWX 1200 RPM N VERSION 24MM SOLID SHAFT

CWX18.10N	4.75	18	1450	100	5	20	16.6	3	32
-----------	------	----	------	-----	---	----	------	---	----

## CWX 1750 RPM N VERSION 24MM SOLID SHAFT

CWX4G25N	4	15	2500	170	6.5	20	10	6	32
----------	---	----	------	-----	-----	----	----	---	----

Oil Capacity = 32 oz

Maximum Fluid Temperature = 140° F

Inlet Thread = 3/4" F

Discharge Thread = 3/8" F

## RAIL KITS

AR 2748 1-1/4"

**SPECIAL NOTE:** Use AR64516 Oil. First change oil after 50 hours of use. Then every 500 hours. This oil is specially formulated to provide correct lubrication properties for our pumps. **No** other oil is factory approved for these pumps.

\*Available upon special request (non-stock item)