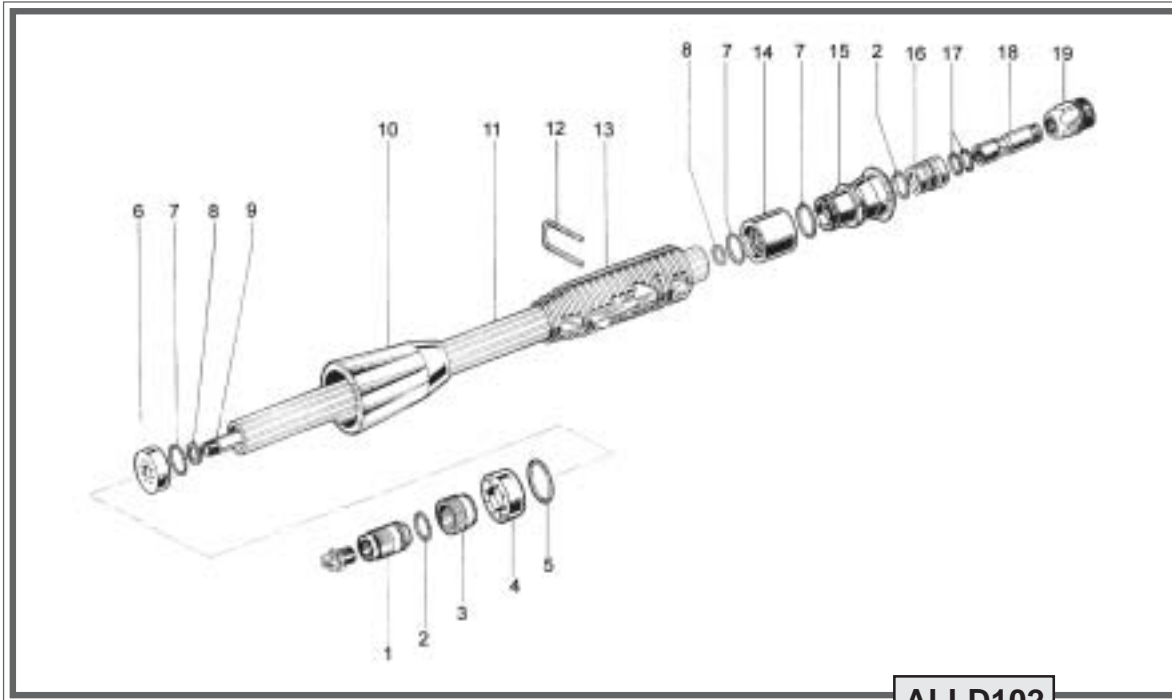


## “LD102” Dual Lance



**ALLD102**

POS	CODE	QTY	DESCRIPTION
1	113-150085	1	Nozzle holder
2	005-060108	2	O-ring 2068 70SH
3	113-060027	1	Locking ring nut (for L.P.N.)
4	113-170312	1	∅ 3,5 low pressure nozzle (L.P.N.)
	113-170313	1	∅ 4 low pressure nozzle (L.P.N.)
	113-170314	1	∅ 4,5 low pressure nozzle (L.P.N.)
	113-170315	1	∅ 5 low pressure nozzle (L.P.N.)
5	113-060160	1	O-ring 28 x 2 70SH
6	113-170309	1	∅ 5,5 low pressure nozzle (L.P.N.)
7	113-060155	3	O-ring 19 x 2 70SH
8	113-150114	2	∅ 10,2 x 14 x 1,5 washer
9	113-471335	1	480 mm (18,9") S.S. pipe
	113-471336	1	560 mm (22") S.S. pipe
	113-471337	1	700 mm (27,6") S.S. pipe

POS	CODE	QTY	DESCRIPTION
10	113-130121	1	Rubber nozzle protector
11	113-000700	1	450 mm (17,7") aluminum pipe
	113-000701	1	530 mm (20,9") aluminum pipe
	113-000702	1	670 mm (26,3") aluminum pipe
12	113-050203	1	S.S. holding clamp
13	113-100129	1	Sliding handle
14	113-010007	1	Seat for distributor
15	113-030500	1	Insert holder distributor
16	113-080033	1	Distributor insert
17	113-060154	2	O-ring 2056 90SH
18	113-130009	1	Distributor spool
19	101-150005	1	M22 coupling