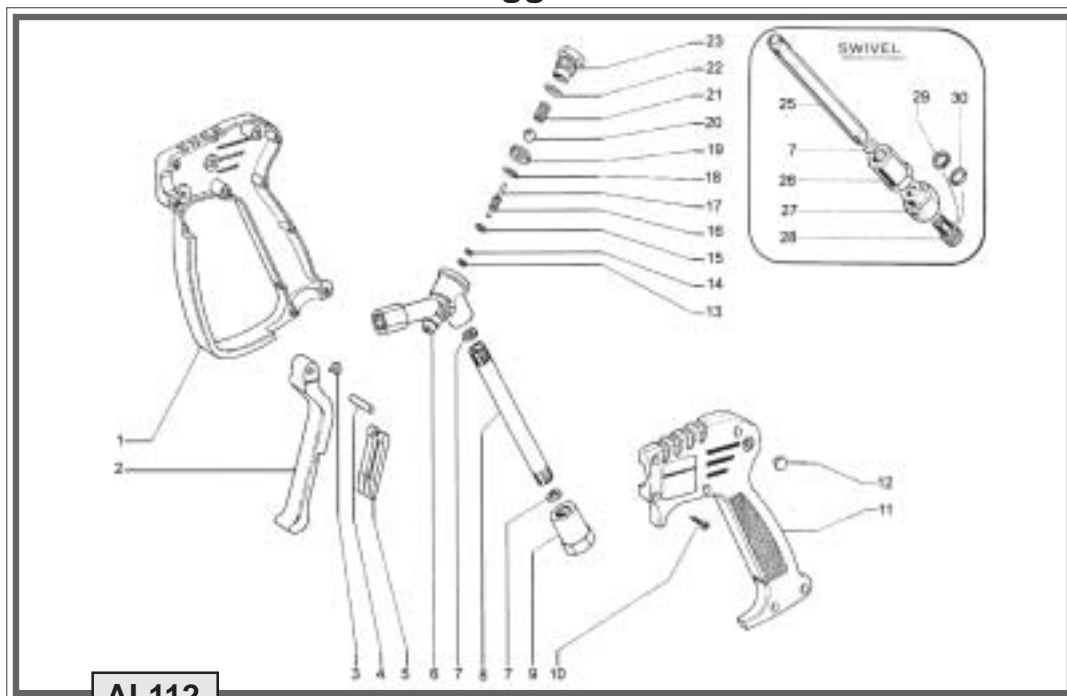


## Trigger Gun



**AL112**

POS	CODE	QTY	DESCRIPTION
1	011-160137	1	Lower gun body frame
2	011-090012	1	Trigger
3	011-380700	1	Trigger insert
4	011-160306	1	ø 5 x 25,5 mm pin
5	011-090011	1	Locking lever
6	011-020037	1	1/4 FEM. GAS body
7	005-060201	2	ø 11 x 6,5 x 1 washer
8	001-471139	1	128,5 mm (5") zinc. pipe
9	011-150052	1	3/8 FEM GAS nipple
	011-150056	1	3/8 MAL. GAS nipple
	011-150057	1	3/8 FEM. NPT nipple
	011-150058	1	3/8 MAL. NPT nipple
10	004-190003	6	ø 3,5 x 18 screw
11	011-160136	1	Upper gun body frame
12	004-130105	1	Protector
13	011-000117	1	Back ring
14	011-060143	1	O-ring V2/84 viton

POS	CODE	QTY	DESCRIPTION
15	011-150112	1	Washer
16	011-100017	1	Spring
17	011-130008	1	Pin
18	001-060129	1	O-ring 2043 90SH
19	001-160207	1	ø 6 seat
20	001-160008	1	ø 11/32 ball
21	005-100021	1	Pressure spring
22	001-060158	1	O-ring 12 x 2 70SH
23	011-170015	1	Spring plug
25	011-471140	1	120,5 mm (4,8") zinc. pipe
26	011-150064	1	Fix brass coupling
27	011-150065	1	3/8 FEM. GAS insert spinning
27	011-150066	1	3/8 FEM. NPT insert spinning
28	011-190400	1	Holding screw
29	001-000104	1	Back-up ring
30	101-060123	1	O-ring 9,3 x 2,4 viton
	<b>011-650006</b>	<b>9</b>	<b>Repair kit</b>