

## 75 Frame "R" Series Reciprocating Process Pumps

**Carbon Steel  
Models**

**75R025**

**316SS  
Models**

**76R025**

**Duplex SS  
Models**

**77R025**

### FEATURES

- Crankcase design with a special built-in support mounting for installing the motor overhead to keep both the foot print and weight to a minimum (up to 225 IEC Frame, 364T/404T NEMA Frame 60 HP).
- Standard Carbon Steel liquid-end construction with optional 316SS or Duplex Stainless Steel providing compatibility and affordability.
- Special pressure-formed, braided, PTFE impregnated Kevlar® packings offer exceptionally long life and a wide range of liquid compatibility.
- Plungers are special surface treated for abrasion resistance offering the highest quality sealing surface for extended packing life.
- SG (Spheroidal Graphite) iron crankcase offers exceptional strength, vibration dampening and flame and spark resistance for added protection in hazardous areas.
- All models are ISO 9000 certified and offer API 674 conformance.
- Packings housed in Packing Cylinder to assure proper alignment and optimum life.
- Standard splash crankcase lubrication with optional pressure lubrication system.

### SPECIFICATIONS

	U.S. Measure	Metric Measure
<b>STANDARD</b>		
Flow.....	13 GPM	(50 l/m)
System Pressure*.....	10,000 PSI	(700 bar)
Maximum RPM.....	450 RPM	(450 min <sup>-1</sup> )

#### API

Flow.....	11.5 GPM	(45 l/m)
System Pressure*.....	10,000 PSI	(700 bar)
Maximum RPM.....	400 RPM	(400 min <sup>-1</sup> )

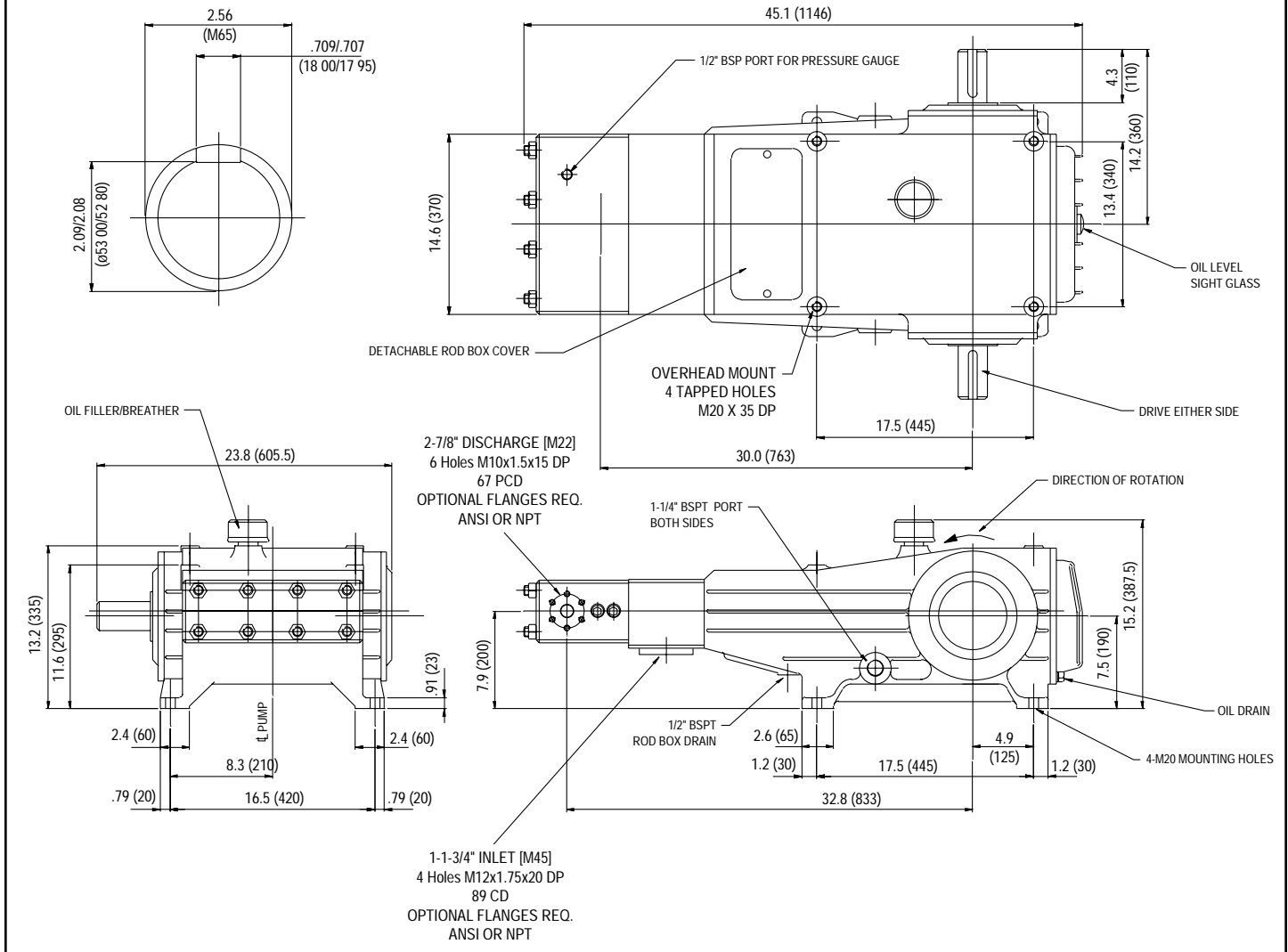
\* Relief pressure should be set at maximum 10% over system pressure.

#### COMMON SPECIFICATIONS

Inlet Pressure .....	Flooded to 50 PSI	(Flooded to 3.5 bar)
Minimum RPM.....	60 RPM	(60 min <sup>-1</sup> )
Bore.....	0.984"	(25 mm)
Maximum HP.....	100 HP	(75 kW)
Stroke.....	3.15"	(80 mm)
Crankcase Capacity.....	14.79 Qts	(14 l)
Maximum Temperature.....	120°F	(50°C)
Inlet Ports (1) .....	1-3/4"	(45 mm)
Discharge Ports (2) .....	7/8"	(22 mm)
Shaft Diameter .....	2.56"	(65 mm)
Shaft Length .....	3.937"	(100 mm)
Weight .....	948 Lbs	(430 kg)
Dimensions .....	45.1 x 23.8 x 15.2"	(1146 x 605.5 x 387.5 mm)

*"Customer confidence is our greatest asset"*

Models 75R025, 76R025, 77R025



Products described hereon are covered by one or more of the following U.S. patents 3558244, 3652188, 3809508, 3920356, 3930756 and 5035580

Jan 2001 1189

**World Headquarters**

**CAT PUMPS**

1681 - 94th Lane N.E. Minneapolis, MN 55449-4324

Phone (763) 780-5440 — FAX (763) 780-2958

e-mail: sales@catpumps.com

www.catpumps.com

**International Inquiries**

FAX (763) 785-4329

e-mail: intlsales@catpumps.com



*"The World's Most Dependable Pumps"*

**CAT PUMPS (U.K.) LTD.**

1 Fleet Business Park, Sandy Lane, Church Crookham, Fleet

Hampshire GU52 8BF, England

Phone Fleet 44 1252-622031 — Fax 44 1252-626655

e-mail: sales@catpumps.co.uk

**N.V. CAT PUMPS INTERNATIONAL S.A.**

Heiveldekens 6A, 2550 Kontich, Belgium

Phone 32-3-450.71.50 — Fax 32-3-450.71.51

e-mail: cpi@catpumps.be www.catpumps.be

**CAT PUMPS DEUTSCHLAND GmbH**

Buchwiese 2, D-65510 Idstein, Germany

Phone 49 6126-9303 0 — Fax 49 6126-9303 33

e-mail: catpumps@t-online.de www.catpumps.de