

Models 6760, 6747, 6767 Shown

FEATURES

Superior Design

- Triplex plunger design gives smoother liquid flow.
- V-Packings are completely lubricated and cooled by the liquid being pumped.
- Inlet and discharge valve assemblies interchange for easier maintenance.
- Oil bath crankcase assures optimum lubrication.
- Close tolerance concentricity of the ceramic plunger maximizes seal life.

Quality Materials

- 304 or 316 stainless steel valves are heat treated and seats are roller burnished for a positive seal and extended valve life.
- Forged Brass, cast Nickel Aluminum Bronze or 316 Stainless Steel manifolds for strength and corrosion resistance.
- Special concentric, high density, polished, graphite impregnated, solid ceramic plungers are abrasion resistant and result in extended seal life.
- Specially formulated, CAT PUMP exclusive, V-Packings offer unmatched performance and seal life.
- Die cast aluminum crankcase provides high strength, minimum weight and precision tolerance control.
- Chrome-moly crankshaft gives unmatched strength and surface hardness.
- Oversized crankshaft bearings with greater loading capacity mean longer bearing life.

Easy Maintenance

- Wet-end is easily serviced without entering crankcase, requiring less time and effort.
- Valve assemblies are accessible without disturbing piping, for quick service.
- Preset packings mean no packing gland adjustment is necessary, reducing maintenance costs.

⚠ WARNING

All systems require both a primary pressure regulating device (i.e., regulator, unloader) and a secondary pressure safety relief device (i.e., pop-off valve, safety valve). Failure to install such relief devices could result in personal injury or damage to the pump or to system components. CAT PUMPS does not assume any liability or responsibility for the operation of a customer's high pressure system.

60 Frame Plunger Pumps

Standard Model

6760

Stainless Steel Model

6761

Nickel Aluminum Bronze Models

6747, 6767

SPECIFICATIONS

U.S. Measure

Metric Measure

MODEL 6747

Flow48 GPM (182 L/M)
 Pressure Range100 to 2000 PSI (7 to 140 BAR)
 RPM615 RPM (615 RPM)

MODEL 6760

Flow75 GPM (284 L/M)
 Pressure Range100 to 1000 PSI (7 to 70 BAR)
 RPM643 RPM (643 RPM)

MODEL 6761 AND 6767

Flow60 GPM (227 L/M)
 Pressure Range100 to 1200 PSI (7 to 85 BAR)
 RPM520 RPM (520 RPM)

Alternate Specifications 6761 and 6767

Flow*70 GPM (265 L/M)
 Pressure Range100 to 1000 PSI (7 to 70 BAR)
 RPM600 RPM (600 RPM)

COMMON SPECIFICATIONS

Inlet Pressure Range*Flooded to 50 PSI (Flooded to 3.5 BAR)
 Bore2.165" (55 mm)
 Stroke2.579" (65.5 mm)
 Crankcase Capacity10 Qts. (9.46 L)
 Max. Liquid Temperature140°F (60°C)
 Inlet Ports (2)*2" NPTF (2" NPTF)
 Discharge Ports (2)1-1/4" NPTF (1-1/4" NPTF)
 Shaft Diameter1.772" (45 mm)
 Weight335 lbs. (151.95 kg)
 Dimensions (6747, 6767, 6760)31.14 x 24.37 x 12.87" (791 x 619 x 327 mm)
 Dimensions (6761)30.71 x 24.37 x 12.44" (780 x 619 x 316 mm)

*A 2-1/2" inlet line is recommended for alternate performance.

HORSEPOWER REQUIREMENTS

MODEL	FLOW		PRESSURE				RPM
			PSI 900	PSI 1000	PSI 1200	PSI 2000	
	U.S. GPM	L/M	BAR 60	BAR 70	BAR 85	BAR 140	
6760	75	284	46.3	51.4	N/A	N/A	643
	70	265	43.2	48.0	N/A	N/A	600
6761 6767	70	265	43.2	48.0	N/A	N/A	600
	60	227	37.1	41.2	49.4	N/A	520
	50	189	30.9	34.3	41.2	N/A	433
6747	48	182	29.6	32.9	39.4	65.8	615

DETERMINING THE PUMP R.P.M. Rated G.P.M. = "Desired" G.P.M.
Rated R.P.M. = "Desired" R.P.M.

DETERMINING THE REQUIRED H.P. GPM x PSI = Electric Brake
1460 = H. P. Required

DETERMINING MOTOR PULLEY SIZE Motor Pulley O.D. = Pump Pulley O.D.
Pump R.P.M. = Motor R.P.M.

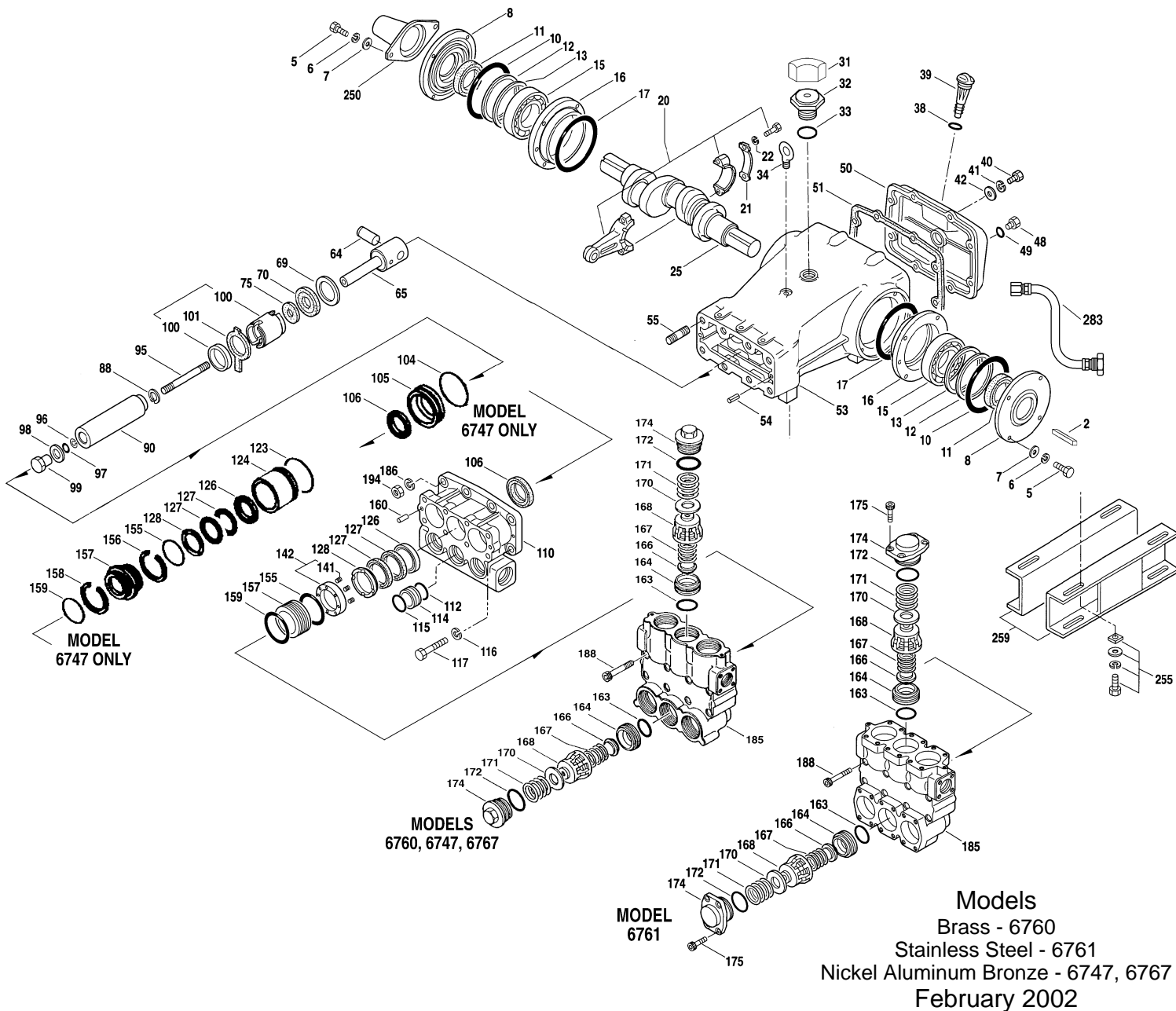
See complete Drive Packages [Inclds: Pulleys, Belts, Hubs, Key] Tech Bulletin 003.
 Refer to pump Service Manual for repair procedure and additional technical information.

"Customer confidence is our greatest asset"

PARTS LIST

ITEM	PART NUMBER				DESCRIPTION	QTY				
	6747	MATL	6760	MATL	6761	MATL	6767	MATL		
● 2	43048	STL	43048	STL	43048	STL	43048	STL	Key (M14x9x90)	1
5	89728	S	80296	STZP	89728	S	89728	S	Screw, HH (M10x40)	8
6	15847	S	12503	STZP	15847	S	15847	S	Lockwasher, Split (M10)	8
7	19934	SS	12490	STZP	19934	SS	19934	SS	Washer, Flat (M10)	8
8	29443	AL	29443	AL	29443	AL	29443	AL	Cover, Bearing, Outer	2
10	29444	NBR	29444	NBR	29444	NBR	29444	NBR	O-Ring, Bearing Case	2
11	11443	NBR	11443	NBR	11443	NBR	11443	NBR	Seal, Oil, Crankshaft - 70D	2
12	43642	S	43642	S	43642	S	43642	S	Washer, Shim (M120x0.3), Bearing, Inner	0-2
13	43643	S	43643	S	43643	S	43643	S	Washer, Shim (M120x0.5), Bearing, Inner	0-2
15	29441	STL	29441	STL	29441	STL	29441	STL	Bearing, Roller	2
16	29442	STL	29442	STL	29442	STL	29442	STL	Cover, Bearing, Inner	2
17	29444	NBR	29444	NBR	29444	NBR	29444	NBR	O-Ring, Bearing Case	2
20	115983	HS	115983	HS	115983	HS	115983	HS	Rod, Connecting	3
21	44941	STZP	44941	STZP	44941	STZP	44941	STZP	Washer, Locking	3
22	43641	STZP	43641	STZP	43641	STZP	43641	STZP	Washer, Shim (M10.5x1.5)	6
25	29440	FCM	29440	FCM	29440	FCM	29440	FCM	Crankshaft, Dual End	1
31	828710		828710		828710		828710		Protector, Oil Cap	1
32	43211	ABS	43211	ABS	43211	ABS	43211	ABS	Cap, Oil Filler	1
33	14177	NBR	14177	NBR	14177	NBR	14177	NBR	O-Ring, Oil Filler Cap - 70D	1
34	44319	STZP	44319	STZP	44319	STZP	44319	STZP	Bolt, Eye (M12) [1/00]	1
38	11338	NBR	11338	NBR	11338	NBR	11338	NBR	O-Ring, Dip Stick - 70D	1
39	27769	ABS	27769	ABS	27769	ABS	27769	ABS	Stick, Dip	1
40	89627	S	80288	STZP	89627	S	89627	S	Screw, HH (M10x30)	8
41	15847	S	12503	STZP	15847	S	15847	S	Lockwasher, Split (M10)	8
42	19934	SS	12490	STZP	19934	SS	19934	SS	Washer, Flat (M10)	8
48	25625	STCP	25625	STCP	25625	STCP	25625	STCP	Plug, Drain (1/4x19BSP)	1
49	23170	NBR	23170	NBR	23170	NBR	23170	NBR	O-Ring, Drain Plug - 70D	1
50	29438	AL	29438	AL	29438	AL	29438	AL	Cover, Rear	1
51	29439	NBR	29439	NBR	29439	NBR	29439	NBR	Gasket, Rear Cover	1
● 53	43284	AL	43284	AL	43284	AL	43284	AL	Crankcase w/Guide Pins [1/00]	1
54	43282	S	43282	S	43282	S	43282	S	Pin, Guide	2
55	89615	S	85440	STZP	89615	S	89615	S	Stud (M16x40)	2
64	29481	CM	29481	CM	29481	CM	29481	CM	Pin, Crosshead	3
65	45384	SSZZ	‡ 45384	SSZZ	45384	SSZZ	45384	SSZZ	Rod, Plunger	3
69	29453	STZP	29453	STZP	29453	STZP	29453	STZP	Washer, Oil Seal	3
70	29454	NBR	29454	NBR	29454	NBR	29454	NBR	Seal, Oil - 80D	3
75	44752	NBR	44752	NBR	44752	NBR	44752	NBR	Slinger, Barrier	3
88	45677	SS	45677	SS	45677	SS	45677	SS	Washers, Keyhole (M14)	3
90	45672	CC	44749	CC	44749	CC	44749	CC	Plunger (M45x185 = Model 6747) (M55x185 = Models 6760, 6761, 6762)	3
95	44748	SS	89783	S	44748	SS	44748	SS	Stud, Plunger Retainer (M14 x 147)	3
96	20214	PTFE	20214	PTFE	20214	PTFE	20214	PTFE	Back-up-Ring, Plunger Retainer	3
97	17616	NBR	17616	NBR	17616	NBR	17616	NBR	O-Ring, Plunger Retainer - 80D	3
98	11686	FPM	11686	FPM	11686	FPM	11686	FPM	O-Ring, Plunger Retainer - 80D	3
99	44751	SS	44751	SS	44751	SS	44751	SS	Gasket, Plunger Retainer	3
99	44750	SS	45276	S	44750	SS	44750	SS	Retainer, Plunger (M14)	3
100	702014	PVDF	44760	PVDF	44760	PVDF	44760	PVDF	Retainer, Seal, Rear	3
101	701580	D	44761	PVDF	44761	PVDF	44761	PVDF	Retainer, Seal, Front	3
104	18178	NBR	—	—	—	—	—	—	Wick, Long Tab (M55x185)	3
105	13338	FPM	—	—	—	—	—	—	O-Ring, Inlet Adapter - 80D	3
106	701355	SS	—	—	—	—	—	—	O-Ring, Inlet Adapter - 70D	3
110	701357	SS	—	—	—	—	—	—	Adapter, LPS	3
110	106147	NBR	44757	NBR	44757	NBR	44757	NBR	Seal, LPS w/SS-Spg	3
110	701752	SFTA*	45882	FPM	45882	FPM	45882	FPM	Seal, LPS w/SS-Spg	3
112	44754	NAB	48460	BB	45769	SS	44754	NAB	Manifold, Inlet	1
112	18175	NBR	18175	NBR	18175	NBR	18175	NBR	O-Ring, Spacer, Inner - 80D	3
114	13266	FPM	13266	FPM	13266	FPM	13266	FPM	O-Ring, Spacer, Inner - 70D	3
114	44767	SS	44767	SS	44767	SS	44767	SS	Spacer, Inlet Manifold	3
115	18175	NBR	18175	NBR	18175	NBR	18175	NBR	O-Ring, Spacer, Outer - 80D	3
116	13266	FPM	13266	FPM	13266	FPM	13266	FPM	O-Ring, Spacer, Outer - 70D	3
116	19086	S	12504	STZP	19086	S	19086	S	Lockwasher, Split (M16)	4
117	89729	S	89972	STZP	89729	S	89729	S	Screw, HH (M16x55)	4
123	18178	NBR	—	—	—	—	—	—	O-Ring, Cylinder V/P - 80D	3
124	13338	FPM	—	—	—	—	—	—	O-Ring, Cylinder V/P - 70D	3
124	701357	SSL	—	—	—	—	—	—	Cylinder, V/P	3
126	701358	SS	48392	D	48392	D	48392	D	Adapter, Female	3
127	104450	STG*	45771	SS	45771	SS	45771	SS	Adapter, Female	3
128	701359	SS	44764	STG*	44764	STG*	44764	STG*	V-Packing	6
141	—	—	45772	SS	45772	SS	45772	SS	Adapter, Male	3
142	—	—	44943	SS	44943	SS	44943	SS	Coil Spring, Spacer	24
155	701978	NBR	48501	BB	45383	SS	45383	SS	Spacer w/Coil Springs	3
156	701360	FPM	18178	NBR	18178	NBR	18178	NBR	O-Ring, Spacer - 80D	3
157	701361	PTFE	13338	FPM	13338	FPM	13338	FPM	O-Ring, Spacer - 70D	3
158	701362	SS	—	—	—	—	—	—	Back-up Ring, Inner	3
158	701363	PTFE	45321	SS	45321	SS	45321	SS	Spacer, V-Packing	3
159	18178	NBR	—	—	—	—	—	—	Spacer, V-Packing w/Coil Springs	3
160	13338	FPM	—	—	—	—	—	—	Back-up Ring, Outer	3
160	44756	SS	18178	NBR	18178	NBR	18178	NBR	O-Ring, Spacer - 80D	3
163	18176	NBR	13338	FPM	13338	FPM	13338	FPM	O-Ring, Spacer - 70D	3
164	44772	SS	44756	SS	44756	SS	44756	SS	Pin, Guide	2
166	44774	SS	18176	NBR	18176	NBR	18176	NBR	O-Ring, Seat	6
167	44773	SS	13278	FPM	13278	FPM	13278	FPM	O-Ring, Seat	6
168	44775	PVDF	44772	SS	44772	SS	44772	SS	Seat	6
170	44776	SS	‡ 44774	SS	44774	SS	44774	SS	Valve	6
171	44780	SS	‡ 44773	SS	44773	SS	44773	SS	Spring	6
172	18177	NBR	44775	PVDF	44775	PVDF	44775	PVDF	Retainer, Spring	6
174	44778	NAB	‡ 44776	SS	44776	SS	44776	SS	Washer, Retainer	6
175	—	—	44780	SS	44780	SS	44780	SS	Spring, Coil, Valve Plug	6
185	44769	NAB	18177	NBR	18177	NBR	18177	NBR	O-Ring, Valve Plug - 80D	6
			13279	FPM	13279	FPM	13279	FPM	O-Ring, Valve Plug - 70D	6
			48572	SSL	44778	NAB	44778	NAB	Plug, Valve [3/00]	1
			48573	S	—	—	—	—	Screw (M16x35) [3/00]	24
			48489	SSL	44769	NAB	44769	NAB	Manifold, Discharge [3/00]	1

EXPLODED VIEW

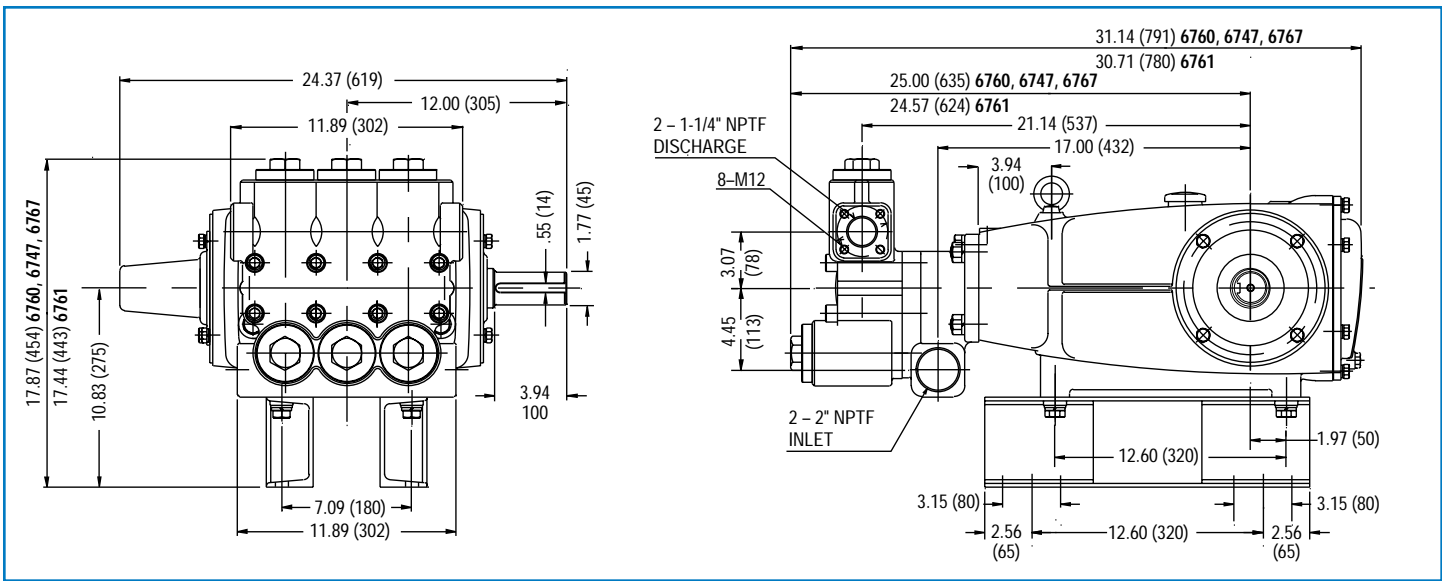


	6747 MATL	6760 MATL	6761 MATL	6767 MATL		
186	19086 S	12504 STZP	19086 S	19086 S	Lockwasher, Split (M16)	2
188	89694 S	89695 STZP	89694 S	89694 S	Screw, HSH (M16x110)	8
194	81291 S	81081 STZP	81291 S	81291 S	Nut, Hex (M16)	2
● 250	29445 AL	29445 AL	29445 AL	29445 AL	Protector, Shaft	1 ●
● 255	33243	33243	33243	33243	Kit, Mount (Included w/Pump)	1 ●
● 259	29477 STZP	29477 STZP	29477 STZP	29477 STZP	Rail (Included w/Pump) (Two per pump required)	2 ●
275	990014 STL	990014 STL	990014 STL	990014 STL	Hub, 45mm (M14x9 Keyway) [See Drive Packages, Tech Bulletin 003]	1
● 279	30429 STZP	30429 STZP	30429 STZP	30429 STZP	Oiler (10 oz.)	3 ●
281	30969	30969	30969	30969	Oiler, Glass (10 oz.)	3
282	10070 NBR	10070 NBR	10070 NBR	10070 NBR	Gasket, Oiler	3
● 283	34334	34334	34334	34334	Kit, Oil Drain	1 ●
● 290	6104	6104	6104	6104	Gasket, Liquid (1.0 oz.)	1 ●
● 299	702348 NAB	816760 BBCP	816667 SSL	814820 NAB	Head, Complete	1 ●
300	702349 NBR*	34091 NBR*	34091 NBR*	34091 NBR*	Kit, Seal (Incls: 97, 106, 112, 115, 123, 127, 155, 156, 158, 159)	1
	702350 FPM*	34093 FPM	34093 FPM	34093 FPM	Kit, Seal (Incls: 97, 106, 112, 115, 123, 127, 155, 156, 158, 159)	1
310	‡ 34092 NBR	‡ 34092 NBR	‡ 34092 NBR	‡ 34092 NBR	Kit, Valve (Incls: 163, 164, 166, 167, 168, 170, 172)	2
	31273 FPM	31273 FPM	31273 FPM	31273 FPM	Kit, Valve (Incls: 163, 164, 166, 167, 168, 170, 172)	2
	88902 STZP	88902 STZP	88902 STZP	88902 STZP	Stud (M16x277) (For removing D.M., I.M.)	2
●	—	—	—	—	C.A.T. (For R.O. or Industrial Applications)	1
●	—	—	—	—	Adapters (2 per C.A.T.) (See Data Sheet for complete selection)	2 ●
—	—	6565.5	6565.5	6565.5	Plunger Pump Service Video, Section V	1

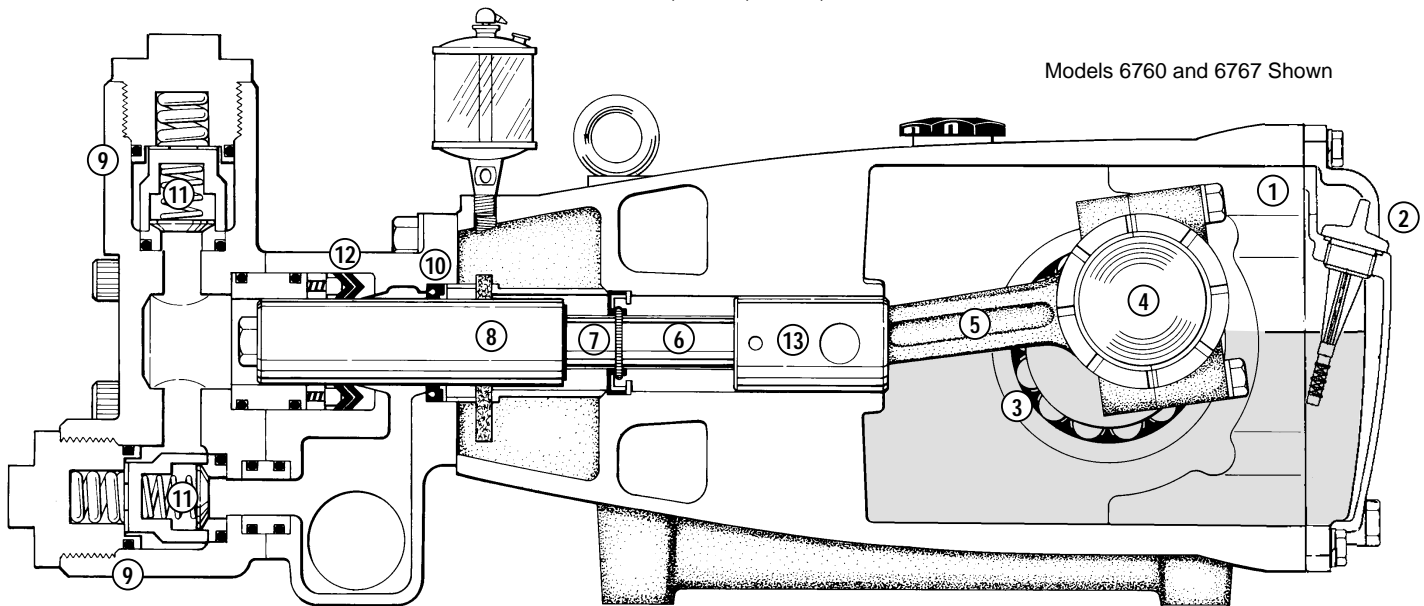
● Industrial discount. **Bold print part numbers are unique to a particular pump model.** *Italics are optional items.* [] Date of latest production change.

C.A.T. highly recommended for pressurized inlet, R.O. and Industrial applications. *Review material codes for individual items (STG and SFTA generally may be used as alternate). See Tech Bulletins 003, 024, 036, 043, 052, 053, 054, 064, 074, 077, 082, 083 and 084 for additional information. ‡ Production parts 304SS, replacement parts are 316SS.

MATERIAL CODES (Not Part of Part Number): ABS=ABS Plastic AL=Aluminum BB=Brass BBCP=Brass/Chrome Plated BBHS=Brass/High Strength CC=Ceramic CM=Chrome-Moly D=Delrin® FBB=Forged Brass FCM=Forged Chrome-moly FPM=Fluorocarbon (Viton®) NAB=Nickel Aluminum Bronze NBR=Medium Nitrile (Buna-N) PTFE=Pure Teflon® PVDF=Fluoroplastic (High Strength) S=304SS SFTA=Special Blend (Teflon®) Tan SS=316SS SSL=316SS/Low Carbon SSZZ=316SS/Zamak STCP=Steel/Chrome Plated STG=Special Blend (Teflon®) White STL=Steel STZP=Steel/Zinc Plated



Models 6760, 6761, 6747, 6767



Models 6760 and 6767 Shown

- 1 Die cast aluminum **crankcase** means high strength, lightweight, and excellent tolerance control.
- 2 **Dipstick** offers convenient top access for easy oil level check.
- 3 Oversized crankshaft **bearings** provide extended bearing life and pump performance.
- 4 Chrome-moly **crankshaft** provides unmatched strength and surface hardness for long life.
- 5 Matched oversized **connecting rods** are made of Zamak, a material noted for strength and superior bearing quality.
- 6 The **plunger rods** are high tensile strength stainless steel with Zamak crossheads.
- 7 The stainless steel **slinger** provides back-up protection for the crankcase seal, keeping pumped liquids out of the crankcase.
- 8 Special concentric, high density, polished, graphite impregnated, solid ceramic **plungers** are abrasion resistant and result in extended seal life.
- 9 **Manifolds** are a high tensile strength forged brass, nickel aluminum bronze or stainless steel for long term, continuous duty.
- 10 100% wet **seal** design adds to service life by allowing pumped liquids to cool and lubricate on both sides.
- 11 Stainless steel **valves, seats and springs** provide corrosion-resistance, positive seating and long life.
- 12 Specially formulated, CAT PUMP exclusive, **V-Packings** offer unmatched performance and seal life.
- 13 **Crossheads** are 360° supported for uncompromising alignment.

Products described hereon are covered by one or more of the following U.S. patents 3558244, 3652188, 3809508, 3920356, 3930756 and 5035580

World Headquarters
CAT PUMPS
 1681 - 94th Lane N.E. Minneapolis, MN 55449-4324
 Phone (763) 780-5440 — FAX (763) 780-2958
 e-mail: sales@catpumps.com
 www.catpumps.com

International Inquiries
 FAX (763) 785-4329
 e-mail: intlsales@catpumps.com



"The World's Most Dependable Pumps"

CAT PUMPS (U.K.) LTD.
 1 Fleet Business Park, Sandy Lane, Church Crookham, Fleet
 Hampshire GU52 8BF, England
 Phone Fleet 44 1252-622031 — Fax 44 1252-626655
 e-mail: sales@catpumps.co.uk

N.V. CAT PUMPS INTERNATIONAL S.A.
 Heiveldekens 6A, 2550 Kontich, Belgium
 Phone 32-3-450.71.50 — Fax 32-3-450.71.51
 e-mail: cpi@catpumps.be www.catpumps.be

CAT PUMPS DEUTSCHLAND GmbH
 Buchwiese 2, D-65510 Idstein, Germany
 Phone 49 6126-9303 0 — Fax 49 6126-9303 33
 e-mail: catpumps@t-online.de www.catpumps.de