

## 35 Frame Plunger Pump

**Standard Brass Model**

**3535**

**Stainless Steel Model**

**3531**

**Nickel Aluminum Bronze Model**

**3537**

### FEATURES

#### Superior Design

- Triplex plunger design gives smoother liquid flow.
- V-Packings are completely lubricated and cooled by the liquid being pumped.
- Inlet and discharge valve assemblies interchange for easier maintenance.
- Lubricated Lo-Pressure Seals provide double protection against external leakage.
- Oil bath crankcase assures optimum lubrication.
- Close tolerance concentricity of the ceramic plunger maximizes seal life.

#### Quality Materials

- All stainless steel valves are heat treated and seats are roller burnished for a positive seal and extended valve life.
- Forged Brass, 316 Stainless Steel or Nickel Aluminum Bronze manifolds for strength and corrosion resistance.
- Special concentric, high density, polished, graphite impregnated, solid ceramic plungers are abrasion resistant and result in extended seal life.
- Specially formulated, CAT PUMP exclusive, V-Packings offer unmatched performance and seal life.
- Die cast aluminum crankcase provides high strength, minimum weight and precision tolerance control.
- Chrome-moly crankshaft gives unmatched strength and surface hardness.
- Oversized crankshaft bearings with greater loading capacity means longer bearing life.

#### Easy Maintenance

- Wet-end is easily serviced without entering crankcase, requiring less time and effort.
- Valve assemblies are accessible without disturbing piping, for quick service.
- Preset packings mean no packing gland adjustment is necessary, reducing maintenance costs.

### SPECIFICATIONS

|                                  | U.S. Measure          | Metric Measure       |
|----------------------------------|-----------------------|----------------------|
| Flow.....                        | 36 GPM                | (136 L/M)            |
| Pressure Range.....              | 100 to 1200 PSI       | (7 to 85 BAR)        |
| Inlet Pressure Range .....       | Flooded to 70 PSI     | (Flooded to 4.9 BAR) |
| RPM .....                        | 800 RPM               | (800 RPM)            |
| Bore.....                        | 1.575"                | (40 mm)              |
| Stroke.....                      | 1.890"                | (48 mm)              |
| Crankcase Capacity.....          | 4.2 Qts.              | (4 L)                |
| Maximum Liquid Temperature ..... | 160°F                 | (71°C)               |
| Inlet Ports (2) .....            | 1-1/2" NPTF           | (1-1/2 NPTF)         |
| Discharge Ports (2).....         | 1" NPTF               | (1" NPTF)            |
| Pulley Mounting .....            | Either Side           | (Either Side)        |
| Shaft Diameter .....             | 1.378"                | (35 mm)              |
| Weight.....                      | 139 lbs.              | (63 kg)              |
| Dimensions (3535, 3537).....     | 24.06 x 18.11 x 9.72" | (611 x 460 x 247 mm) |
| Dimensions (3531).....           | 24.13 x 18.11 x 9.72" | (613 x 460 x 247 mm) |

### HORSEPOWER REQUIREMENTS

| FLOW     |     | PRESSURE |          |          | RPM | DRIVE   |
|----------|-----|----------|----------|----------|-----|---|
| U.S. GPM | L/M | PSI 800  | PSI 1000 | PSI 1200 |     |   |
|          |     | BAR 55   | BAR 70   | BAR 85   |     | Consult CAT PUMPS for Pump and Motor Pulley Sizes |
| 36       | 136 | 19.8     | 24.7     | 29.7     | 800 |   |
| 30       | 114 | 16.5     | 20.6     | 24.7     | 667 |   |
| 25       | 95  | 13.7     | 17.2     | 20.6     | 556 |   |

|                                      |   |   |   |
|--------------------------------------|---|---|---|
| <b>DETERMINING THE PUMP R.P.M.</b>   | $\frac{\text{Rated G.P.M.}}{\text{Rated R.P.M.}}$     | = | $\frac{\text{"Desired" G.P.M.}}{\text{"Desired" R.P.M.}}$ |
| <b>DETERMINING THE REQUIRED H.P.</b> | $\frac{\text{GPM} \times \text{PSI}}{1460}$           | = | Electric Brake H. P. Required                             |
| <b>DETERMINING MOTOR PULLEY SIZE</b> | $\frac{\text{Motor Pulley O.D.}}{\text{Pump R.P.M.}}$ | = | $\frac{\text{Pump Pulley O.D.}}{\text{Motor R.P.M.}}$     |

See complete Drive Packages [Incls: Pulleys, Belts, Hubs, Key] Tech Bulletin 003.  
Refer to pump Service Manual for repair procedure and additional technical information.

#### **⚠ WARNING**

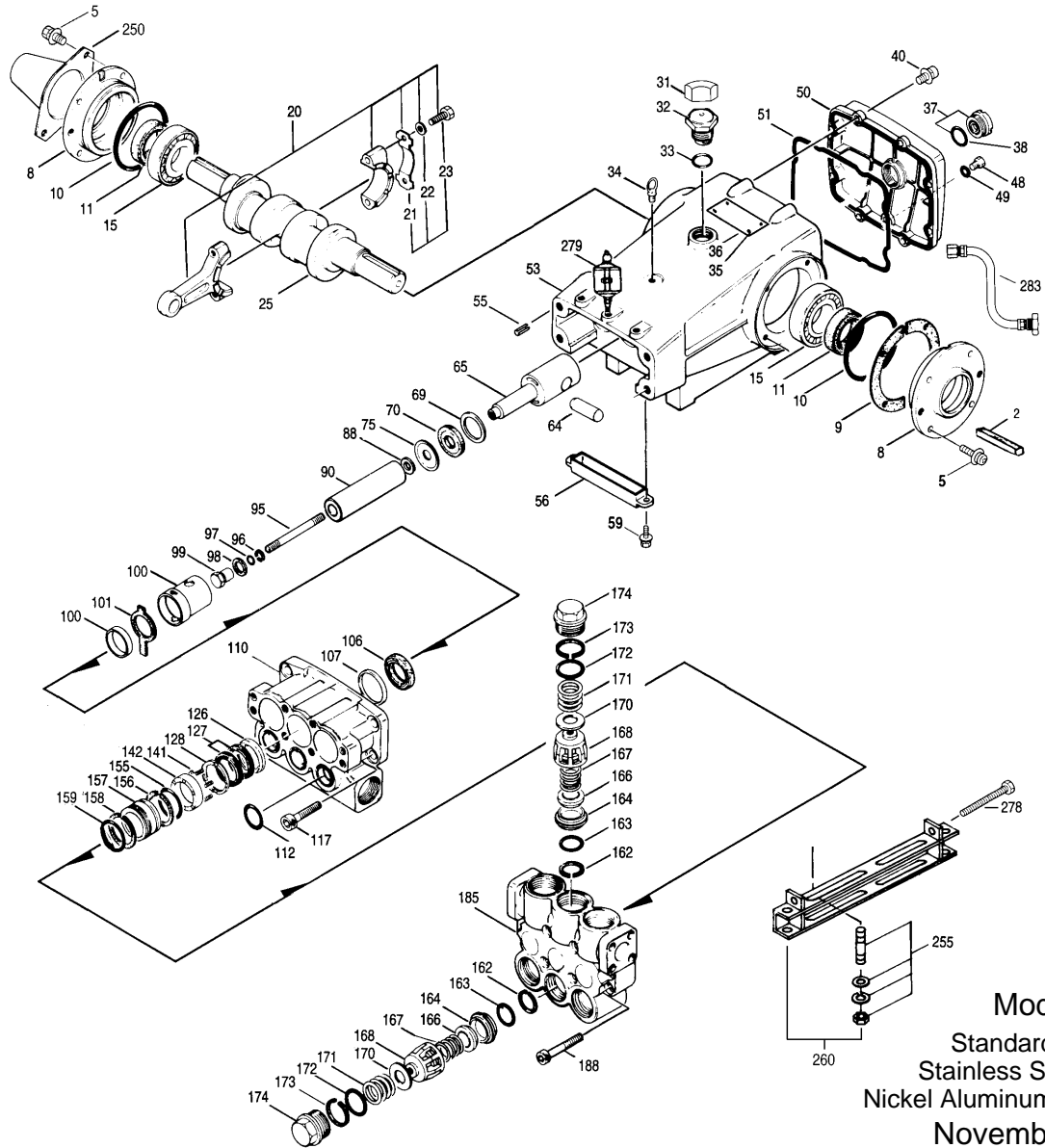
All systems require both a primary pressure regulating device (i.e., regulator, unloader) and a secondary pressure safety relief device (i.e., pop-off valve, safety valve). Failure to install such relief devices could result in personal injury or damage to the pump or to system components. CAT PUMPS does not assume any liability or responsibility for the operation of a customer's high pressure system.

*"Customer confidence is our greatest asset"*

# PARTS LIST

| ITEM | 3535   | MATL | 3531   | MATL | 3537   | MATL | DESCRIPTION   | QTY  |
|------|--------|------|--------|------|--------|------|---|------|
| ● 2  | 30055  | STL  | 30055  | STL  | 30055  | STL  | Key (M10x6x32)  | 1 ●  |
| ● 5  | 34021  | STL  | 34021  | STL  | 34021  | STL  | Key (M10x8x70)  | 1 ●  |
| 8    | 118824 | S    | 118824 | S    | 118824 | S    | Screw, Sems HHC (M8x25)                                   | 8    |
| 9    | 44542  | AL   | 44542  | AL   | 44542  | AL   | Cover, Bearing  | 2    |
| 10   | 701138 | F    | 701138 | F    | 701138 | F    | Cover, Bearing (Use w/701139, 140, 145, 147, 428)         | 2    |
| 11   | 44543  | FBR  | 44543  | FBR  | 44543  | FBR  | Shim, Split Bearing Cover                                 | 4    |
| 15   | 12398  | NBR  | 12398  | NBR  | 12398  | NBR  | O-Ring, Bearing Cover - 70D                               | 2    |
| 20   | 13296  | NBR  | 13296  | NBR  | 13296  | NBR  | Seal, Oil, Crankshaft                                     | 2    |
| 21   | 29326  | STL  | 29326  | STL  | 29326  | STL  | Bearing, Roller   | 2    |
| 22   | 121467 | TNM  | 121467 | TNM  | 121467 | TNM  | Rod, Connecting Assy (Incls: 44940, 43641, 88155) [10/00] | 3    |
| 23   | 44940  | STZP | 44940  | STZP | 44940  | STZP | Locking Washer (M10)                                      | 3    |
| 25   | 43641  | STZP | 43641  | STZP | 43641  | STZP | Washer (M10.5x1.5)  | 6    |
| 31   | 88155  | STZP | 88155  | STZP | 88155  | STZP | Screw, HH (M10x60F)                                       | 6    |
| 32   | 29325  | FCM  | 29325  | FCM  | 29325  | FCM  | Crankshaft, Dual End                                      | 1    |
| 33   | 828710 |      | 828710 |      | 828710 |      | Protector, Oil Cap  | 1    |
| 34   | 43211  | ABS  | 43211  | ABS  | 43211  | ABS  | Cap, Oil Filler   | 1    |
| 35   | 14177  | NBR  | 14177  | NBR  | 14177  | NBR  | O-Ring, Oil Filler Cap - 70D                              | 1    |
| 36   | 44319  | STZP | 44319  | STZP | 44319  | STZP | Bolt, Eye (M12x1.75)                                      | 1    |
| 37   | 701145 | AL   | 701145 | AL   | 701145 | AL   | Rivet, Serial Plate (Use w/701138, 139, 140, 147, 428)    | 4    |
| 38   | 701147 | AL   | 701147 | AL   | 701147 | AL   | Name Plate (Use w/701138, 139, 140, 145, 428)             | 1    |
| 39   | 92241  |      | 92241  |      | 92241  |      | Gauge, Oil, Bubble w/Gasket                               | 1    |
| 40   | 44428  | NBR  | 44428  | NBR  | 44428  | NBR  | Gasket, Flat, Oil Gauge - 80D                             | 1    |
| 48   | 118824 | S    | 118824 | S    | 118824 | S    | Screw, Sems HHC (M8x25)                                   | 8    |
| 49   | 25625  | STCP | 25625  | STCP | 25625  | STCP | Plug, Drain (1/4"x19BSP)                                  | 1    |
| 50   | 23170  | NBR  | 23170  | NBR  | 23170  | NBR  | O-Ring, Drain Plug - 70D                                  | 1    |
| 51   | 45936  | AL   | 45936  | AL   | 45936  | AL   | Cover, Crankcase  | 1    |
| 53   | 701139 | F    | 701139 | F    | 701139 | F    | Cover, Crankcase (Use w/701138, 140, 145, 147, 428)       | 1    |
| 55   | 16612  | NBR  | 16612  | NBR  | 16612  | NBR  | O-Ring, Crankcase Cover - 70D                             | 1    |
| 56   | 44559  | AL   | 44559  | AL   | 44559  | AL   | Crankcase   | 1    |
| 57   | 701428 | F    | 701428 | F    | 701428 | F    | Crankcase (Use w/701138, 139, 140, 145, 147)              | 1    |
| 58   | 27488  | S    | 27488  | S    | 27488  | S    | Pins, Guide   | 2    |
| 59   | 27790  | PE   | 27790  | PE   | 27790  | PE   | Pan, Oil  | 1    |
| 64   | —      |      | 19933  | S    | 19933  | S    | Washer (M6)   | 2    |
| 65   | —      |      | 15849  | S    | 15849  | S    | Lockwasher, Split (M6)                                    | 2    |
| 66   | —      |      | 89618  | S    | 89618  | S    | Screw, HH (M6x10)   | 2    |
| 69   | 92538  | S    | —      |      | —      |      | Screw, Sems HHC (M6x16)                                   | 2    |
| 70   | 43864  | CM   | 43864  | CM   | 43864  | CM   | Pin, Crosshead  | 3    |
| 75   | 45116  | SSZZ | 45116  | SSZZ | 45116  | SSZZ | Rod, Plunger  | 3    |
| 88   | 29338  | STZP | 29338  | STZP | 29338  | STZP | Washer, Oil Seal  | 3    |
| 90   | 100488 | NBRS | 100488 | NBRS | 100488 | NBRS | Seal, Oil, Crankcase                                      | 3    |
| 95   | 44739  | FPM  | 44739  | FPM  | 44739  | FPM  | Seal, Oil, Crankcase                                      | 3    |
| 96   | 43865  | S    | 43865  | S    | 43865  | S    | Slinger, Barrier  | 3    |
| 97   | 45676  | SS   | 45676  | SS   | 45676  | SS   | Washer, Keyhole (M16)                                     | 3    |
| 98   | 43921  | CC   | 43921  | CC   | 43921  | CC   | Plunger (M40x145)   | 3    |
| 99   | 89778  | SS   | 89778  | SS   | 89778  | SS   | Stud, Plunger Retainer (M10x135)                          | 3    |
| 100  | 20189  | PTFE | 20189  | PTFE | 20189  | PTFE | Back-up-Ring, Plunger Retainer                            | 3    |
| 101  | 11345  | NBR  | 11345  | NBR  | 11345  | NBR  | O-Ring, Plunger Retainer - 70D                            | 3    |
| 106  | 11375  | FPM  | 11375  | FPM  | 11375  | FPM  | O-Ring, Plunger Retainer                                  | 3    |
| 107  | 701490 | EPDM | 701490 | EPDM | 701490 | EPDM | O-Ring, Plunger Retainer                                  | 3    |
| 110  | 44085  | SS   | 44085  | SS   | 44085  | SS   | Gasket, Retainer  | 3    |
| 112  | 44084  | SS   | 44084  | SS   | 44084  | SS   | Retainer, Plunger (M10)                                   | 3    |
| 117  | 814279 | PVDF | 814279 | PVDF | 814279 | PVDF | Retainer, Seal, 2 Pc.                                     | 3    |
| 126  | 44112  |      | 44112  |      | 44112  |      | Wick, Long Tab  | 3    |
| 127  | 44113  | NBR  | 44113  | NBR  | 44113  | NBR  | Seal, LPS w/SS-Spg  | 3    |
| 128  | 44740  | FPM  | 44740  | FPM  | 44740  | FPM  | Seal, LPS w/SS-Spg  | 3    |
| 132  | 46955  | EPDM | 46955  | EPDM | 46955  | EPDM | Seal, LPS w/S-Spg   | 3    |
| 133  | 43925  | BB   | 45381  | SS   | 44115  | NAB  | Spacer, Lo-Pressure Seal                                  | 3    |
| 134  | 46392  | BBCP | 45365  | SSL  | 45124  | NAB  | Manifold, Inlet   | 1    |
| 135  | 11379  | NBR  | 11379  | NBR  | 11379  | NBR  | O-Ring, Inlet Manifold - 70D                              | 3    |
| 136  | 14183  | FPM  | 14183  | FPM  | 14183  | FPM  | O-Ring, Inlet Manifold                                    | 3    |
| 137  | 701491 | EPDM | 701491 | EPDM | 701491 | EPDM | O-Ring, Inlet Manifold                                    | 3    |
| 138  | 44585  | S    | 44585  | S    | 44585  | S    | Screw, HSH (M14x40)                                       | 4    |
| 139  | 43926  | BB   | 48391  | D    | 48391  | D    | Adapter, Female   | 3    |
| 140  | —      |      | 45367  | SS   | 45367  | SS   | Adapter Female  | 3    |
| 141  | 44609  | STG* | 44609  | STG* | 44609  | STG* | V-Packing   | 6    |
| 142  | 44741  | SFG  | 44741  | SFG  | 44741  | SFG  | V-Packing   | 6    |
| 143  | 43928  | BB   | 45368  | SS   | 45368  | SS   | Adapter, Male   | 3    |
| 144  | 45113  | SS   | 45113  | SS   | 45113  | SS   | Springs, Coil   | 6/18 |
| 145  | 46352  | BB   | 45382  | SS   | 45382  | SS   | Spacer, w/Coil Springs                                    | 3    |
| 146  | 18697  | NBR  | 18697  | NBR  | 18697  | NBR  | O-Ring, V-Packing-Spacer - 70D                            | 3    |
| 147  | 20137  | FPM  | 20137  | FPM  | 20137  | FPM  | O-Ring, V-Packing-Spacer - 70D                            | 3    |
| 148  | 701492 | EPDM | 701492 | EPDM | 701492 | EPDM | O-Ring, V-Packing-Spacer                                  | 3    |
| 149  | 48362  | D    | 48362  | D    | 48362  | D    | Back-up-Ring, Spacer                                      | 3    |
| 150  | 45369  | SS   | 45369  | SS   | 45369  | SS   | Spacer, V-Packing   | 3    |
| 151  | 48362  | D    | 48362  | D    | 48362  | D    | Back-up-Ring, V-Packing-Spacer                            | 3    |
| 152  | 18697  | NBR  | 18697  | NBR  | 18697  | NBR  | O-Ring, V-Packing-Spacer - 70D                            | 3    |
| 153  | 20137  | FPM  | 20137  | FPM  | 20137  | FPM  | O-Ring, V-Packing-Spacer - 70D                            | 3    |
| 154  | 701492 | EPDM | 701492 | EPDM | 701492 | EPDM | O-Ring, V-Packing-Spacer                                  | 3    |
| 155  | 48363  | D    | 48363  | D    | 48363  | D    | Back-up-Ring, Valve Seat                                  | 6    |
| 156  | 26142  | NBR  | 26142  | NBR  | 26142  | NBR  | O-Ring, Seat  | 6    |
| 157  | 14330  | FPM  | 14330  | FPM  | 14330  | FPM  | O-Ring, Seat  | 6    |
| 158  | 701493 | EPDM | 701493 | EPDM | 701493 | EPDM | O-Ring, Seat  | 6    |
| 159  | 44727  | S    | 44612  | SS   | 44612  | SS   | Seat, Stepped   | 6    |
| 160  | 43932  | S    | 44108  | SS   | 44108  | SS   | Valve   | 6    |
| 161  | 44109  | SS   | 44109  | SS   | 44109  | SS   | Spring  | 6    |
| 162  | 44728  | PVDF | 44728  | PVDF | 44728  | PVDF | Retainer, Spring  | 6    |
| 163  | 44729  | SS   | 44729  | SS   | 44729  | SS   | Washer, Spring Retainer                                   | 6    |
| 164  | 44644  | SS   | 44644  | SS   | 44644  | SS   | Coil Spring (70kg), Valve Plug                            | 6    |
| 165  | 89827  | NBR  | 89827  | NBR  | 89827  | NBR  | O-Ring, Valve Plug - 90D                                  | 6    |
| 166  | 11747  | FPM  | 11747  | FPM  | 11747  | FPM  | O-Ring, Valve Plug - 90D                                  | 6    |
| 167  | 701494 | EPDM | 701494 | EPDM | 701494 | EPDM | O-Ring, Valve Plug - 70D                                  | 6    |
| 168  | 48364  | D    | 48364  | D    | 48364  | D    | Back-up-Ring, Valve Plug                                  | 6    |
| 169  | 46444  | FBB  | 48419  | SSNP | 44643  | NAB  | Plug, Valve   | 6    |

# EXPLODED VIEW



**Models**  
 Standard - 3535  
 Stainless Steel - 3531  
 Nickel Aluminum Bronze - 3537  
 November 2001

|       | <b>3535</b>   | <b>MATL</b> | <b>3531</b>   | <b>MATL</b> | <b>3537</b>   | <b>MATL</b> |  |     |
|-------|---------------|-------------|---------------|-------------|---------------|-------------|--|-----|
| ● 185 | <b>46394</b>  | <b>BBCP</b> | <b>46326</b>  | <b>SSL</b>  | <b>46335</b>  | <b>NAB</b>  | Manifold, Discharge  | 1 ● |
| ● 188 | 89981         | S           | 89981         | S           | 89981         | S           | Screw, HSH (M12x70)  | 8 ● |
| ● 250 | 44516         | NY          | 44516         | NY          | 44516         | NY          | Protector, Shaft w/2 89283 screws (Included with pump)   | 1 ● |
| ●     | 701140        | F           | 701140        | F           | 701140        | F           | Protector, Shaft (Use w/701138, 139, 145, 147, 428)  | 1 ● |
| ● 255 | 34039         | SS          | 34039         | SS          | 34039         | SS          | Kit, Stud Mount  | 1 ● |
| ● 260 | 92674         | STZP        | 92674         | STZP        | 92674         | STZP        | Mounting, Box Assy   | 1 ● |
| ● 275 | —             | —           | —             | —           | —             | —           | Pulley, Hub & Key [See Drive Packages, Tech Bulletin 03]   | 1 ● |
| ● 278 | 80540         | ZP          | 80540         | ZP          | 80540         | ZP          | Screw, HH (M12x100) (Rail Adjusting Screw)   | 1 ● |
| ● 279 | 30278         | STZP        | 30278         | STZP        | 30278         | STZP        | Oiler (1 oz.)  | 3 ● |
| ● 281 | 30967         | —           | 30967         | —           | 30967         | —           | Glass, Oiler   | 3 ● |
| ● 282 | 10069         | NBR         | 10069         | NBR         | 10069         | NBR         | Gasket, Oiler  | 3 ● |
| ● 283 | 34334         | —           | 34334         | —           | 34334         | —           | Kit, Oil Drain   | 1 ● |
| ● 290 | 6104          | —           | 6104          | —           | 6104          | —           | Gasket, Liquid (1 oz.)   | 1 ● |
| ● 299 | <b>814821</b> | <b>BBCP</b> | <b>814544</b> | <b>SSL</b>  | <b>814522</b> | <b>NAB</b>  | Complete Head  | 1 ● |
| ● 300 | 31040         | NBR*        | 31040         | NBR*        | 31040         | NBR*        | Kit, Seal (Incls: 97,106,112,127,155,156,158,159)  | 1 ● |
|       | 33055         | FPM         | 33055         | FPM         | 33055         | FPM         | Kit, Seal (Incls: 97,106,112,127,155,156,158,159)  | 1 ● |
|       | ◆ 33262       | EPDM*       | ◆ 33262       | EPDM*       | ◆ 33262       | EPDM*       | Kit, Seal (Incls: 97,106,112,127,155,156,158,159)  | 1 ● |
| 310   | <b>34235</b>  | <b>NBR</b>  | <b>34017</b>  | <b>NBR</b>  | <b>34017</b>  | <b>NBR</b>  | Kit, Valve (Incls: 162,163,164,166,167,168,170,172,173)  | 2 ● |
|       | 31955         | FPM         | 31955         | FPM         | 31955         | FPM         | Kit, Valve (Incls: 162,163,164,166,167,168,170,172,173)  | 2 ● |
|       | ◆ 31952       | EPDM        | ◆ 31952       | EPDM        | ◆ 31952       | EPDM        | Kit, Valve (Incls: 162,163,164,166,167,168,170,172,173)  | 2 ● |
| ● —   | 819000        | F           | 819000        | F           | 819000        | F           | Crankcase Assy (Incls: 8,35,36,50,53,250)  | 1 ● |
| ● —   | 714500        | SS          | 714500        | SS          | 714500        | SS          | C.A.T. (For R.O. or Industrial Applications)   | 1 ● |
| ● —   | 714506        | SS          | 714506        | SS          | 714506        | SS          | Adapter (2 per C.A.T.) (See Data Sheet for complete selection)   | 2 ● |
| —     | 6565.3        | —           | 6565.3        | —           | 6565.3        | —           | Video, Plunger Pump Service - Section 3  | 1 ● |
| —     | 6100          | —           | 6100          | —           | 6100          | —           | Oil, Case (12 Bottles) ISO 68 Multi-viscosity Hydraulic (Fill to specified crankcase capacity prior to start-up) | 1 ● |

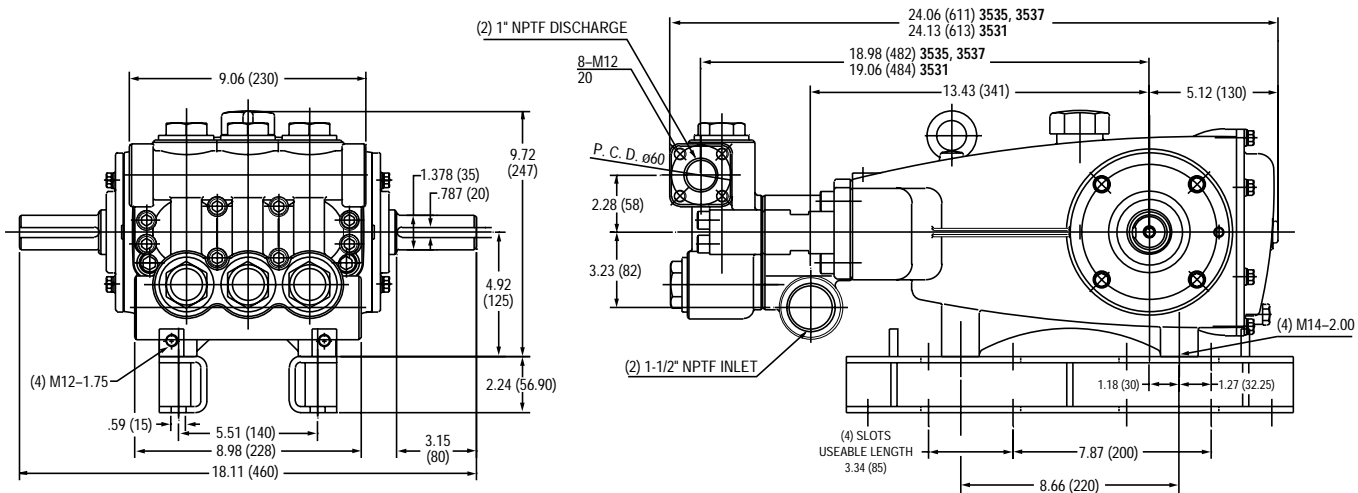
● Industrial discount. **Bold print part numbers are unique to a particular pump model.** *Italics are optional items.* ◆ Silicone oil/grease required.

[ ] Date of latest production change. **C.A.T. highly recommended for pressurized inlet, R.O. and Industrial applications.**

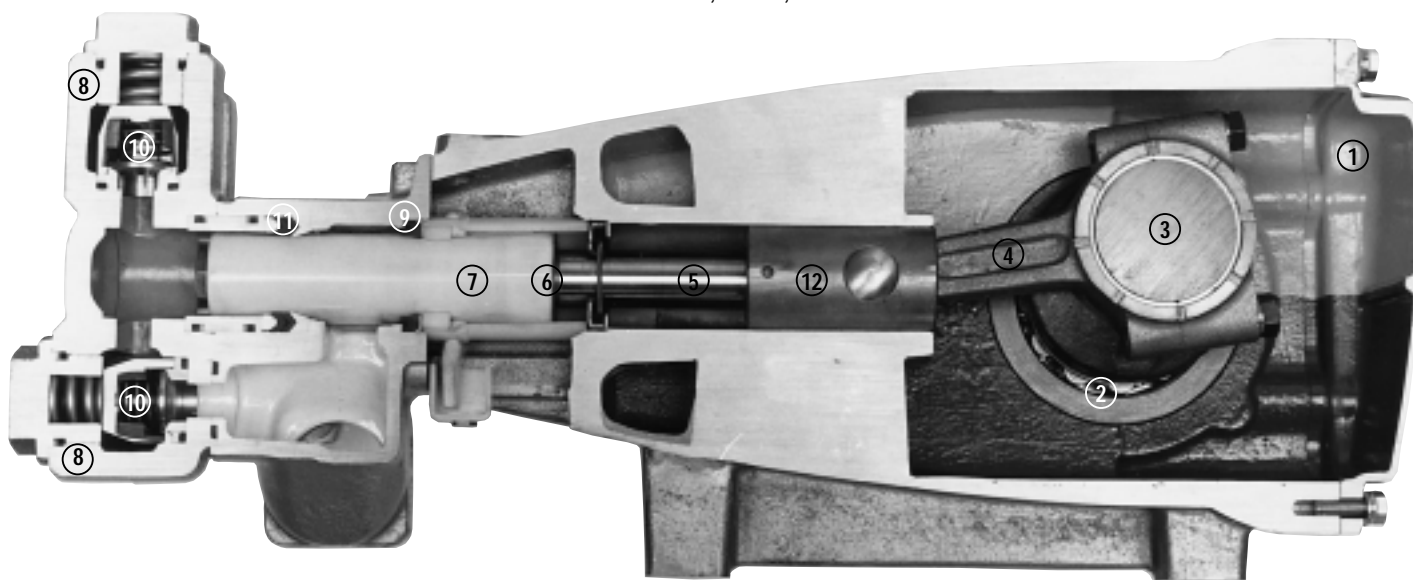
See Tech Bulletins 03, 024, 035, 036, 040, 041, 043, 050, 052, 053, 069, 074, 077 and 083 for additional information.

† Production Parts NAB or BB, Replacement Parts are 316 Stainless Steel \* Review material codes for individual items (STG generally may be used as alternate).

MATERIAL CODES (Not Part of Part Number): AL=Aluminum BB=Brass BBCP=Brass/Chrome Plated CC=Ceramic CM=Chrome-Moly D=Delrin® EPDM=Ethylene Propylene Diene Monomer F=Cast Iron FBB=Forged Brass FBR=Fiber FCM=Forged Chrome-moly FPM=Fluorocarbon (Viton®) NAB=Nickel Aluminum Bronze NBR=Medium Nitrile (Buna-N) NBRs=Buna, Silicone Free NY=Nylon PE=Polyethylene PTFE=Pure Teflon® PVDF=Fluoroplastic (High Strength) S=304SS SS=316SS SSL=316/Low Carbon SSNP=316SS/Nickel Plated SSZZ=316SS/Zamak STCP=Steel/Chrome Plated SFG=Special Blend (Viton®) STG=Special Blend (Teflon®) White STL=Steel STZP=Steel/Zinc Plated TNM=Special High Strength ZP=Zinc Plated



Models 3535, 3531, 3537



- 1 Die cast aluminum **crankcase** means high strength, lightweight, and excellent tolerance control.
- 2 Oversized crankshaft **bearings** provide extended bearing life and pump performance.
- 3 Chrome-moly **crankshaft** provides unmatched strength and surface hardness for long life.
- 4 Matched oversized high strength **connecting rods** are noted for superior strength and bearing quality.
- 5 Special stainless steel **plunger rods** with high strength crossheads for longevity and corrosion resistance.
- 6 The stainless steel **slinger** provides back-up protection for the crankcase seal, keeping pumped liquids out of the crankcase.
- 7 Special concentric, high density, polished, graphite impregnated, solid ceramic **plungers** are abrasion resistant and result in extended seal life.
- 8 **Manifolds** are a high tensile strength forged brass, 316 stainless steel or nickel aluminum bronze for long term, continuous duty.
- 9 100% **wet seal** design adds to service life by allowing pumped liquids to cool and lubricate on both sides.
- 10 Stainless steel **valves, seats and springs** provide corrosion-resistance, positive seating and long life.
- 11 Specially formulated, CAT PUMP exclusive, **V-Packings** offer unmatched performance and seal life.
- 12 **Crossheads** are 360° supported providing uncompromising alignment.

Products described hereon are covered by one or more of the following U.S. patents 3558244, 3652188, 3809508, 3920356, 3930756 and 5035580

## World Headquarters

### CAT PUMPS

1681 - 94th Lane N.E. Minneapolis, MN 55449-4324

Phone (763) 780-5440 — FAX (763) 780-2958

e-mail: sales@catpumps.com

www.catpumps.com

## International Inquiries

FAX (763) 785-4329

e-mail: intl@catpumps.com



*"The World's Most Dependable Pumps"*

## CAT PUMPS (U.K.) LTD.

1 Fleet Business Park, Sandy Lane, Church Crookham, Fleet

Hampshire GU52 8BF, England

Phone Fleet 44 1252-622031 — Fax 44 1252-626655

e-mail: sales@catpumps.co.uk

## N.V. CAT PUMPS INTERNATIONAL S.A.

Heiveldekens 6A, 2550 Kontich, Belgium

Phone 32-3-450.71.50 — Fax 32-3-450.71.51

e-mail: cpi@catpumps.be www.catpumps.be

## CAT PUMPS DEUTSCHLAND GmbH

Buchwiese 2, D-65510 Idstein, Germany

Phone 49 6126-9303 0 — Fax 49 6126-9303 33

e-mail: catpumps@t-online.de www.catpumps.de