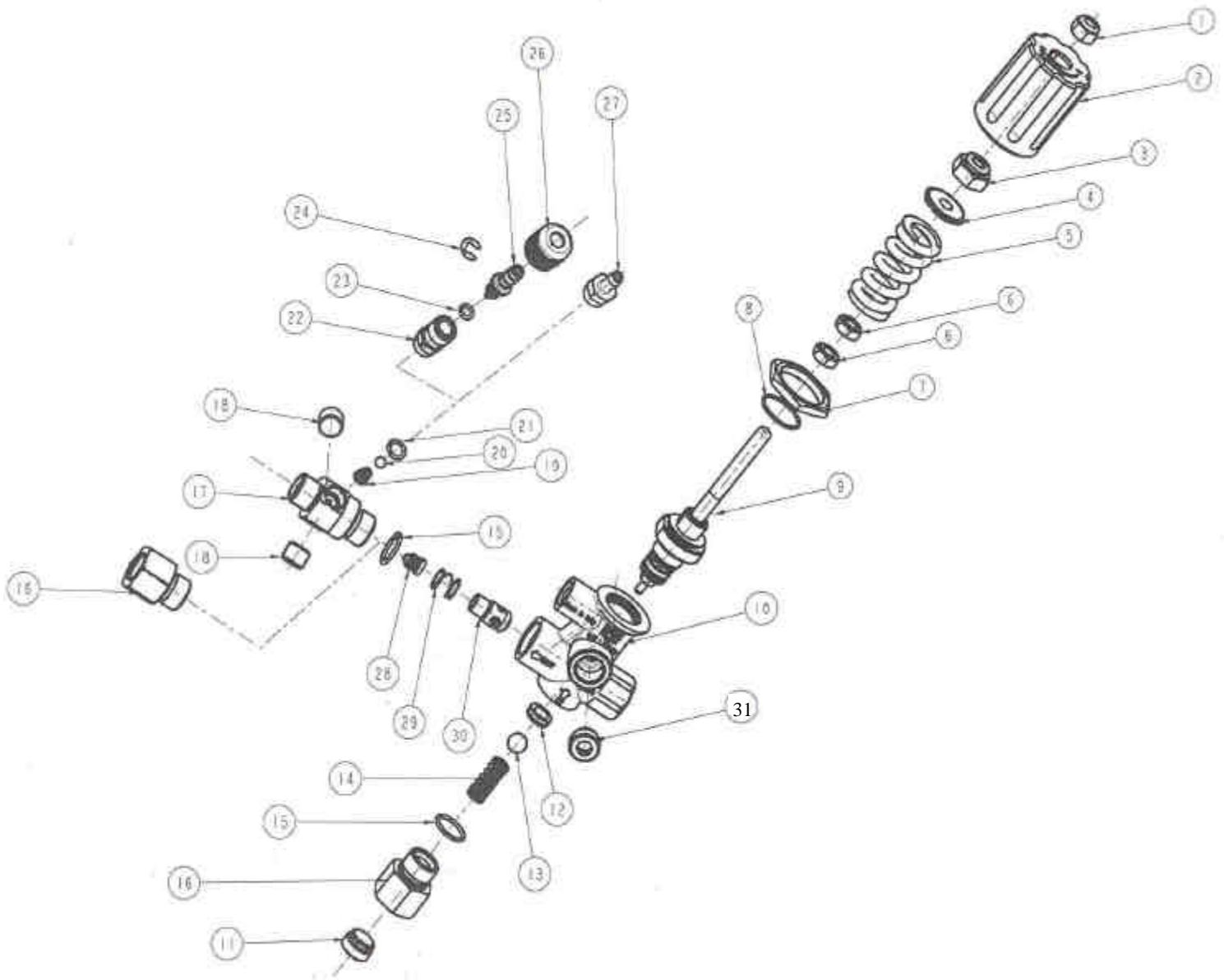


## “MG4000”

### Disegno esploso A / Exploded view A





## MTM Hydro s.r.l.

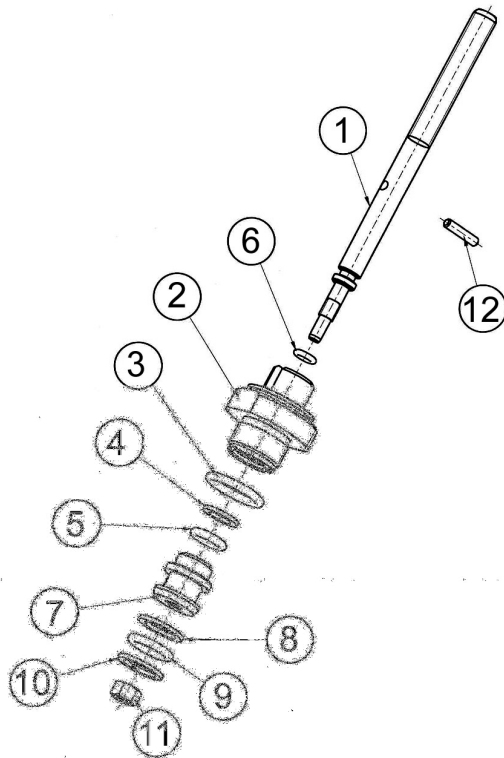
Via Moglia, 33 – 12062 **CHERASCO** (CN)  
tel. (+39) **0172.49.59.30** - fax (+39) **0172.49.54.37**  
web-site [www.mtmhydro.it](http://www.mtmhydro.it) e-mail [info@mtmhydro.it](mailto:info@mtmhydro.it)



### **Distinta base A / Bill of Material A**

<b>code</b>	<b>qty</b>	<b>pos.</b>	<b>kit</b>	<b>Descrizione / Description</b>
39.0023	1	A 1		Dado autobloccante / Self-locking nut
39.0116	1	A 2		Manopola / Knob
38.0044	1	A 3		Dado per manopola / Nut for knob
35.0006	1	A 4		Piattello spingi-molla / Spring retainer disk
38.0007	1	A 5a		Molla 100 bar / Spring 100 bar
38.0006	1	A 5b		Molla 200 bar / Spring 200 bar
38.0005	1	A 5c		Molla 275 bar / Spring 275 bar
38.0004	1	A 5d		Molla 310 bar / Spring 310 bar
38.0128	2	A 6		Dado / Nut
35.0186	1	A 7		Dado / Nut
39.0014	1	A 8a		O-ring 12,42x1,78 mm giallo / yellow
39.0015	1	A 8b		O-ring 12,42x1,78 mm rosso / red
39.0013	1	A 8c		O-ring 12,42x1,78 mm blu / blue
39.0012	1	A 8d		O-ring 12,42x1,78 mm nero / black
18.0291	1	A 9		Stelo / Stem
35.0187	1	A10a		Corpo 1/4" / 1/4" Body
35.0174	1	A10b		Corpo 3/8" / 3/8" Body
35.0003	1	A11		Tappo 3/8" / 3/8" Plug
36.0114	1	A12		Inserto tenuta / Stainless steel seat
36.0185	1	A13		Sfera 13/32" inox / 13/32" Stainless Steel
36.0163	1	A14	Kit1	Molla / Spring
39.0016	2	A15	Kit1	O-ring 15,6x1,78 mm
35.0005	2	A16		Raccordo 3/8"F / 3/8" F Nipple
36.0159	1	A29	Kit1	Molla pistoncino.non-ritorno / No-return piston spring
35.0184	1	A30	Kit1	Pistoncino non-ritorno con or / No-return piston with O-ring
35.0003	1	A31a		Tappo 3/8" / 3/8" Plug
35.0004	1	A31b		Tappo 1/4" / 3/8" Plug

## Disegno esploso B / Exploded view B



## Distinta base B / Bill of Material B

code	qty	pos.	kit	Descrizione / Description
36.0118	1	<b>B 1</b>		Stelo / Stem
35.0185	1	<b>B 2</b>		Raccordo guida / Nipple
39.0164	1	<b>B 3</b>	Kit1	O-ring 15,54x2,62 mm
39.0066	1	<b>B 4</b>		Anello bk / Back up ring
39.0161	1	<b>B 5</b>	Kit1	O-ring 7,6x2,62 mm
39.0132	1	<b>B 6</b>		O-ring 4,48x1,78 mm
35.0214	1	<b>B 7</b>		Boccola di tenuta / Retaining ferrule
39.0068	1	<b>B 8</b>	Kit1	Anello bk / Back up ring
39.0163	1	<b>B 9</b>	Kit1	O-ring 10,78x2,62 mm
39.0065	1	<b>B10</b>	Kit1	Anello bk / Back up ring
36.0004	1	<b>B11</b>		Dado M6 / M6 Nut
39.0263	1	<b>B12</b>		Spina elastica / Plug



**MTM Hydro s.r.l.**  
 Via Moglia, 33 – 12062 **CHERASCO** (CN)  
 tel. (+39) **0172.49.59.30** - fax (+39) **0172.49.54.37**  
 web-site **www.mtmhydro.it** e-mail **info@mtmhydro.it**



**ATTENZIONE: Le seguenti valvole By-Pass con “eiettore”:**

18.0459	18.0474	18.0484	18.0491	18.0461	18.0476	18.0485	18.0492	18.0315	18.0316
18.0317	18.0318	18.0464	18.0479	18.0486	18.0494	18.0169	18.0177	18.0185	18.0193
18.0170	18.0178	18.0186	18.0194	18.0171	18.0179	18.0187	18.0195	18.0172	18.0180
18.0188	18.0196	18.0466	18.0480	18.0487	18.0495	18.0468	18.0481	18.0488	18.0496
18.0470	18.0482	18.0489	18.0319	18.0472	18.0483	18.0490	18.0498	18.0173	18.0181
18.0189	18.0197	18.0174	18.0182	18.0190	18.0198	18.0175	18.0183	18.0191	18.0199
18.0176	18.0184	18.0192	18.0200	18.0500	18.0508	18.0516	18.0523	18.0501	18.0509
18.0517	18.0524	18.0502	18.0510	18.0320	18.0525	18.0503	18.0511	18.0518	18.0526
18.0201	18.0209	18.0217	18.0225	18.0202	18.0210	18.0218	18.0226	18.0203	18.0211
18.0219	18.0227	18.0204	18.0212	18.0220	18.0228	18.0504	18.0512	18.0519	18.0527
18.0505	18.0513	18.0520	18.0528	18.0506	18.0514	18.0521	18.0529	18.0507	18.0515
18.0522	18.0530	18.0205	18.0213	18.0221	18.0229	18.0206	18.0214	18.0222	18.0230
18.0207	18.0215	18.0223	18.0231	18.0208	18.0216	18.0224	18.0232		

**PAY ATTENTION: The following By-Pass valve with “injector”:**

**contengono al loro interno anche i seguenti codici:**  
**include also the following part numbers:**

<b>code</b>	<b>qty</b>	<b>pos.</b>	<b>kit</b>	<b>Descrizione / Description</b>
35.0146	1	A17		Corpo eiettore / Injector body
35.0004	2	A18		Tappo 1/4" / 1/4" Plug
36.0161	1	A19		Molla / Spring
36.0181	1	A20		Sfera / Ball
39.0166	1	A21		O-ring 5,28x1,78 mm
35.0158	1	A22		Raccordo portagomme / Hose barb nipple
39.0132	1	A23		O-ring 4,48x1,78 mm
38.0116	1	A24		Seeger
35.0157	1	A25		Pistoncino eiettore / Injector Piston
35.0156	1	A26		Ghiera porta gomme / Hose barb ferrule
35.0147	1	A27		Raccordo portagomme / Hose barb nipple
vari	1	A28		Ugello / Nozzle

**Kit di ricambio / Spare parts kit**

<b>kit</b>	<b>code</b>	<b>Descrizione / Description</b>
Kit 1	41.0032	Kit valvola MG4000 / MG4000 valve kit