

## 150 Frame "R" Series Reciprocating Process Pumps

**Carbon Steel Model**     **150R100**  
**316SS Model**         **151R100**  
**Duplex SS Model**     **152R100**

### FEATURES

- Crankcase design with a special built-in support mounting for installing the motor overhead to keep both the foot print and weight to a minimum (up to 280 IEC Frame, 444T/445T NEMA Frame 125 HP).
- Standard Duplex Stainless Steel liquid-end construction with optional 316SS or Carbon Steel providing compatibility and affordability.
- Convenient crankcase access for packing replacement without removing the liquid-end or disturbing piping minimizing periodic maintenance time and costs.
- Specially formulated, CAT PUMPS exclusive, high pressure, V-Packings offer exceptionally long life and a wide range of liquid compatibility.
- Solid Ceramic Plungers are special surface treated for abrasion resistance offering the highest quality sealing surface for extended packing life.
- SG cast iron (Spheroidal Graphite) crankcase offers exceptional strength, vibration dampening and flame and spark resistance for added protection in hazardous areas.
- All models are ISO 9000 certified and offer API 674 conformance.
- Packings housed in Packing Cylinder to assure proper alignment and optimum life or optional pressure feed lubrication.
- V-Packing lubrication assures drip-free operation and enhanced packing life.
- Standard splash crankcase lubrication with optional pressure lubrication system.

### SPECIFICATIONS

U.S. Measure

Metric Measure

#### STANDARD

Flow.....260 GPM (985 l/m)  
 System Pressure\*.....1000 PSI (70 bar)  
 Maximum RPM.....295 RPM (295 min<sup>-1</sup>)

#### ALTERNATE

Flow.....320 GPM (1210 l/m)  
 System Pressure\*.....825 PSI (57 bar)  
 Maximum RPM.....360 RPM (360 min<sup>-1</sup>)

#### API

Flow.....240 GPM (905 l/m)  
 System Pressure\*.....1000 PSI (70 bar)  
 Maximum RPM.....270 RPM (270 min<sup>-1</sup>)

\* Relief pressure should be set at maximum 10% over system pressure.

#### COMMON SPECIFICATIONS

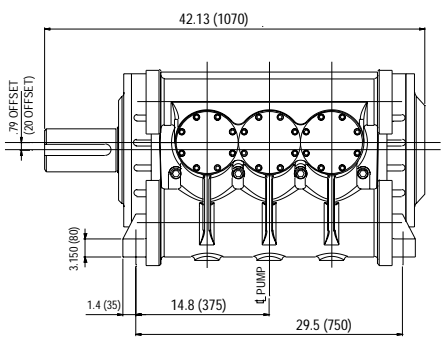
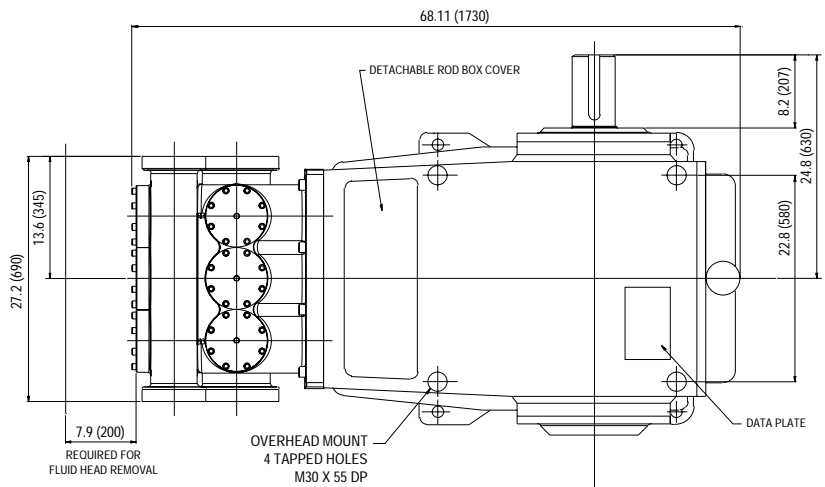
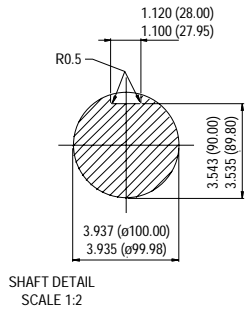
Inlet Pressure .....Flooded to 50 PSI (Flooded to 3.5 bar)  
 Minimum RPM.....75 RPM (75 min<sup>-1</sup>)  
 Bore.....3.94" (100 mm)  
 Maximum HP.....200 HP (150 kW)  
 Stroke.....5.91" (150 mm)  
 Crankcase Capacity.....22.4 Gals (85 l)  
 Lubrication .....splash/pressure (splash/pressure)  
 Maximum Temperature.....120°F (50°C)  
 Inlet Ports (2).....6.0" (150 mm)  
 Discharge Ports (2) (nominal).....4.0" (100 mm)  
 Shaft Diameter.....3.937" (100 mm)  
 Shaft Length.....8.150" (207 mm)  
 Weight.....3087 Lbs (1400 kg)  
 Dimensions.....68.11 x 42.13 x 22.05" (1730 x 1070 x 560 mm)

### HORSEPOWER REQUIREMENTS

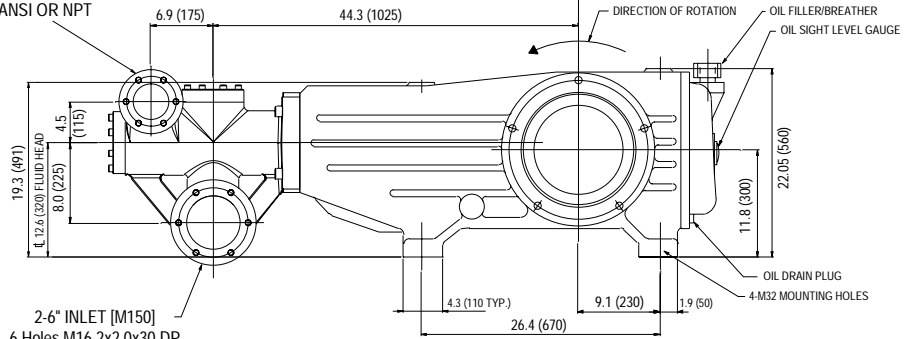
MODEL	FLOW			PRESSURE			RPM
	U.S. GPM	l/m	BPD	PSI 700	PSI 825	PSI 1000	
				bar 50	bar 57	bar 70	
<b>150R100</b>	320	1210	10970	154	181	N/A	360
<b>151R100</b>	260	985	8915	125	147	178	295
<b>152R100</b>	240	905	8230	115	136	165	270
	225	850	7715	108	127	155	253

*"Customer confidence is our greatest asset"*

Models 150R100, 151R100, 152R100



2-4.0" DISCHARGE [M100]  
6 Holes M16x2.0x30 DP  
140 PCD  
OPTIONAL FLANGES REQ.  
ANSI OR NPT



2-6" INLET [M150]  
6 Holes M16.2x2.0x30 DP  
195 PCD  
OPTIONAL FLANGES REQ.  
ANSI OR NPT

Products described hereon are covered by one or more of the following U.S. patents 3558244, 3652188, 3809508, 3920356, 3930756 and 5035580

May 2001 5126

**World Headquarters**  
**CAT PUMPS**  
1681 - 94th Lane N.E. Minneapolis, MN 55449-4324  
Phone (763) 780-5440 — FAX (763) 780-2958  
e-mail: sales@catpumps.com  
www.catpumps.com

**International Inquiries**  
FAX (763) 785-4329  
e-mail: intlsales@catpumps.com



*"The World's Most Dependable Pumps"*

**CAT PUMPS (U.K.) LTD.**  
1 Fleet Business Park, Sandy Lane, Church Crookham, Fleet  
Hampshire GU52 8BF, England  
Phone Fleet 44 1252-622031 — Fax 44 1252-626655  
e-mail: sales@catpumps.co.uk

**N.V. CAT PUMPS INTERNATIONAL S.A.**  
Heiveldekens 6A, 2550 Kontich, Belgium  
Phone 32-3-450.71.50 — Fax 32-3-450.71.51  
e-mail: cpi@catpumps.be www.catpumps.be

**CAT PUMPS DEUTSCHLAND GmbH**  
Buchwiese 2, D-65510 Idstein, Germany  
Phone 49 6126-9303 0 — Fax 49 6126-9303 33  
e-mail: catpumps@t-online.de www.catpumps.de