

150 Frame "R" Series Reciprocating Process Pumps

Carbon Steel Model **150R080**
316SS Model **151R080**
Duplex SS Model **152R080**

FEATURES

- Crankcase design with a special built-in support mounting for installing the motor overhead to keep both the foot print and weight to a minimum (up to 280 IEC Frame, 444T/445T NEMA Frame 125 HP).
- Standard Duplex Stainless Steel liquid-end construction with optional 316SS or Carbon Steel providing compatibility and affordability.
- Convenient crankcase access for packing replacement without removing the liquid-end or disturbing piping minimizing periodic maintenance time and costs.
- Specially formulated, CAT PUMPS exclusive, high pressure, V-Packings offer exceptionally long life and a wide range of liquid compatibility.
- Solid Ceramic Plungers are special surface treated for abrasion resistance offering the highest quality sealing surface for extended packing life.
- SG cast iron (Spheroidal Graphite) crankcase offers exceptional strength, vibration dampening and flame and spark resistance for added protection in hazardous areas.
- All models are ISO 9000 certified and offer API 674 conformance.
- Packings housed in Packing Cylinder to assure proper alignment and optimum life or optional pressure feed lubrication.
- V-Packing lubrication assures drip-free operation and enhanced packing life.
- Standard splash crankcase lubrication with optional pressure lubrication system.

SPECIFICATIONS

U.S. Measure Metric Measure

STANDARD

Flow.....160 GPM (600 l/m)
 System Pressure*.....1650 PSI (115 bar)
 Maximum RPM.....280 RPM (280 min⁻¹)

ALTERNATE

Flow.....200 GPM (765 l/m)
 System Pressure*.....1300 PSI (90 bar)
 Maximum RPM.....355 RPM (355 min⁻¹)

API

Flow.....150 GPM (510 l/m)
 System Pressure*.....1650 PSI (115 bar)
 Maximum RPM.....270 RPM (270 min⁻¹)

* Relief pressure should be set at maximum 10% over system pressure.

COMMON SPECIFICATIONS

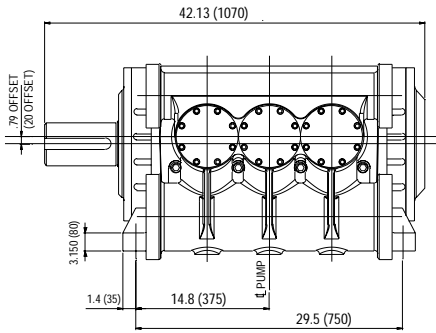
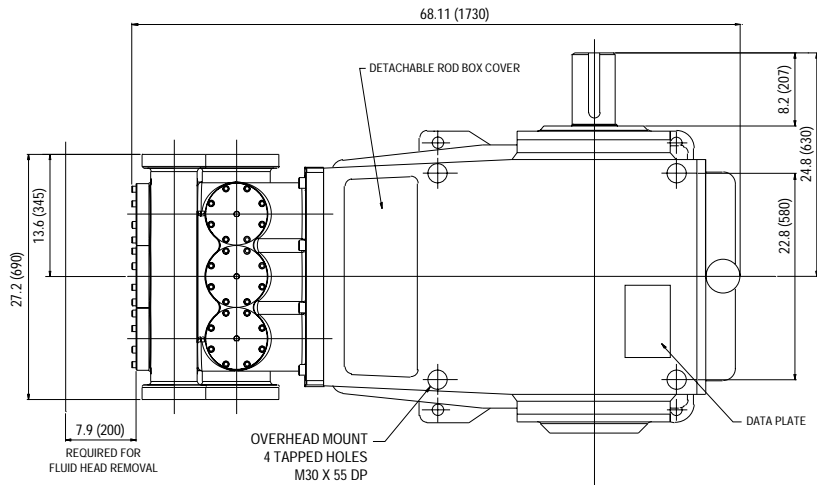
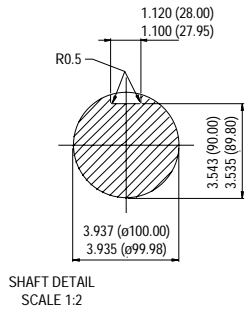
Inlet PressureFlooded to 50 PSI (Flooded to 3.5 bar)
 Minimum RPM.....75 RPM (75 min⁻¹)
 Bore.....3.15" (80 mm)
 Maximum HP.....200 HP (150 kW)
 Stroke.....5.91" (150 mm)
 Crankcase Capacity.....22.4 Gals (85 l)
 Lubricationsplash/pressure (splash/pressure)
 Maximum Temperature.....120°F (50°C)
 Inlet Ports (2).....6.0" (150 mm)
 Discharge Ports (2) (nominal).....4.0" (100 mm)
 Shaft Diameter.....3.397" (100 mm)
 Shaft Length.....8.150" (207 mm)
 Weight.....3087 Lbs (1400 kg)
 Dimensions.....68.11 x 42.13 x 22.05" (1730 x 1070 x 560 mm)

HORSEPOWER REQUIREMENTS

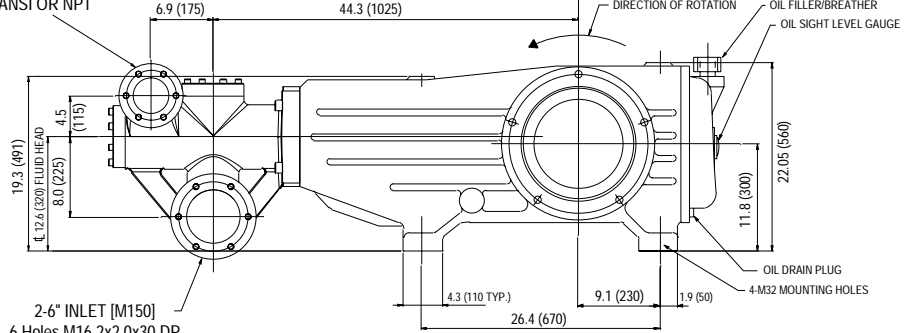
MODEL	FLOW			PRESSURE					RPM
				PSI 800	PSI 1000	PSI 1200	PSI 1500	PSI 1650	
	U.S. GPM	l/m	BPD	bar 55	bar 70	bar 85	bar 105	bar 115	
150R080	200	765	6855	110	137	165	N/A	N/A	355
151R080	160	600	5485	88	110	132	165	181	280
152R080	150	510	5140	82	103	124	155	170	270
	125	478	4285	69	86	103	129	142	219

"Customer confidence is our greatest asset"

Models 150R080, 151R080, 152R080



2-4.0" DISCHARGE [M100]
6 Holes M16x2.0x30 DP
140 PCD
OPTIONAL FLANGES REQ.
ANSI OR NPT



2-6" INLET [M150]
6 Holes M16.2x2.0x30 DP
195 PCD
OPTIONAL FLANGES REQ.
ANSI OR NPT

Products described hereon are covered by one or more of the following U.S. patents 3558244, 3652188, 3809508, 3920356, 3930756 and 5035580

May 2001 5125

World Headquarters
CAT PUMPS
 1681 - 94th Lane N.E. Minneapolis, MN 55449-4324
 Phone (763) 780-5440 — FAX (763) 780-2958
 e-mail: sales@catpumps.com
 www.catpumps.com
International Inquiries
 FAX (763) 785-4329
 e-mail: intlsales@catpumps.com



"The World's Most Dependable Pumps"

CAT PUMPS (U.K.) LTD.
 1 Fleet Business Park, Sandy Lane, Church Crookham, Fleet
 Hampshire GU52 8BF, England
 Phone Fleet 44 1252-622031 — Fax 44 1252-626655
 e-mail: sales@catpumps.co.uk
N.V. CAT PUMPS INTERNATIONAL S.A.
 Heiveldekens 6A, 2550 Kontich, Belgium
 Phone 32-3-450.71.50 — Fax 32-3-450.71.51
 e-mail: cpi@catpumps.be www.catpumps.be
CAT PUMPS DEUTSCHLAND GmbH
 Buchwiese 2, D-65510 Idstein, Germany
 Phone 49 6126-9303 0 — Fax 49 6126-9303 33
 e-mail: catpumps@t-online.de www.catpumps.de