

150 Frame "R" Series Reciprocating Process Pumps

Carbon Steel Model **150R060**
 316SS Model **151R060**
 Duplex SS Model **152R060**

FEATURES

- Crankcase design with a special built-in support mounting for installing the motor overhead to keep both the foot print and weight to a minimum (up to 280 IEC Frame, 444T/445T NEMA Frame 125 HP).
- Standard Duplex Stainless Steel liquid-end construction with optional 316SS or Carbon Steel providing compatibility and affordability.
- Convenient crankcase access for packing replacement without removing the liquid-end or disturbing piping minimizing periodic maintenance time and costs.
- Specially formulated, CAT PUMPS exclusive, high pressure, V-Packings offer exceptionally long life and a wide range of liquid compatibility.
- Solid Ceramic Plungers are special surface treated for abrasion resistance offering the highest quality sealing surface for extended packing life.
- SG cast iron (Spheroidal Graphite) crankcase offers exceptional strength, vibration dampening and flame and spark resistance for added protection in hazardous areas.
- All models are ISO 9000 certified and offer API 674 conformance.
- Packings housed in Packing Cylinder to assure proper alignment and optimum life or optional pressure feed lubrication.
- V-Packing lubrication assures drip-free operation and enhanced packing life.
- Standard splash crankcase lubrication with optional pressure lubrication system.

SPECIFICATIONS

U.S. Measure Metric Measure

STANDARD

Flow.....100 GPM (375 l/m)
 System Pressure*.....2700 PSI (185 bar)
 Maximum RPM.....310 RPM (310 min⁻¹)

ALTERNATE

Flow.....115 GPM (435 l/m)
 System Pressure*.....2300 PSI (160 bar)
 Maximum RPM.....360 RPM (360 min⁻¹)

API

Flow.....86 GPM (326 l/m)
 System Pressure*.....2700 PSI (185 bar)
 Maximum RPM.....270 RPM (270 min⁻¹)

* Relief pressure should be set at maximum 10% over system pressure.

COMMON SPECIFICATIONS

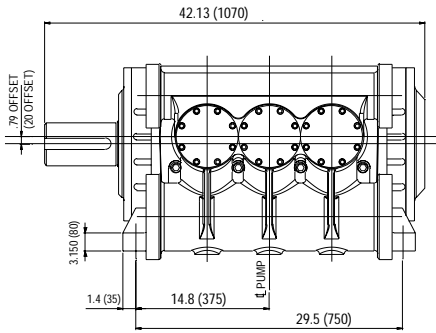
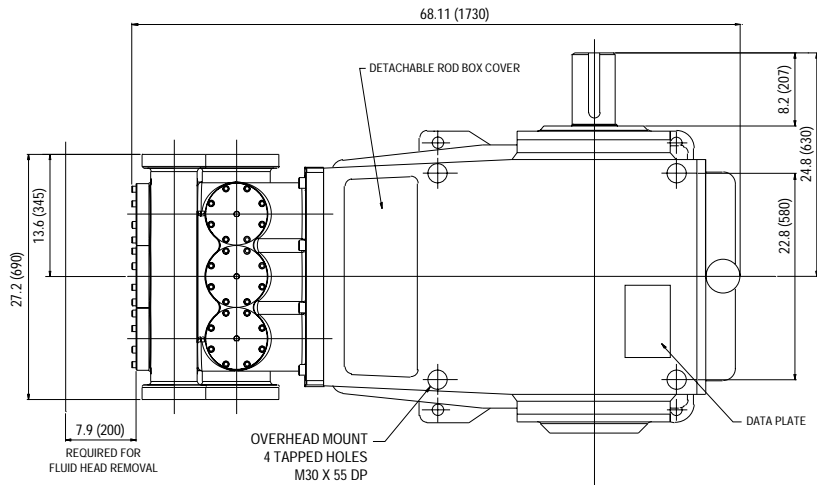
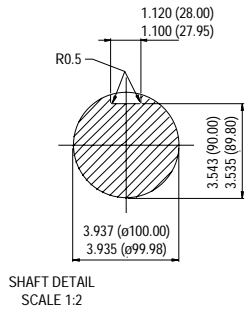
Inlet PressureFlooded to 50 PSI (Flooded to 3.5 bar)
 Minimum RPM.....75 RPM (75 min⁻¹)
 Bore.....2.36" (60 mm)
 Maximum HP.....200 HP (150 kW)
 Stroke.....5.91" (150 mm)
 Crankcase Capacity.....22.4 Gals (85 l)
 Lubricationsplash/pressure (splash/pressure)
 Maximum Temperature.....120°F (50°C)
 Inlet Ports (2).....6.0" (150 mm)
 Discharge Ports (2) (nominal).....4.0" (100 mm)
 Shaft Diameter.....3.397" (100 mm)
 Shaft Length.....8.150" (207 mm)
 Weight.....3087 Lbs (1400 kg)
 Dimensions.....68.11 x 42.13 x 22.05" (1730 x 1070 x 560 mm)

HORSEPOWER REQUIREMENTS

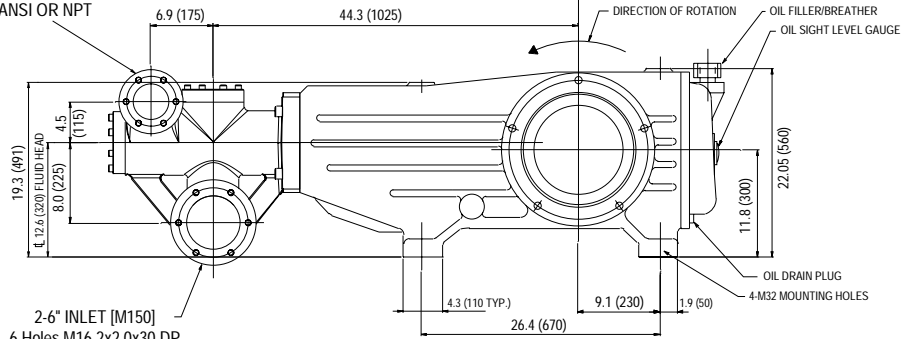
MODEL	FLOW			PRESSURE					RPM
				PSI 1000	PSI 1500	PSI 2000	PSI 2500	PSI 2700	
	U.S. GPM	l/m	BPD	bar 70	bar 105	bar 140	bar 175	bar 185	
150R060	115	435	3940	79	118	158	N/A	N/A	360
151R060	100	375	3430	69	103	137	172	N/A	310
152R060	90	338	3085	62	93	124	155	166	279
	86	326	2950	59	89	118	148	159	270

"Customer confidence is our greatest asset"

Models 150R060, 151R060, 152R060



2-4.0" DISCHARGE [M100]
6 Holes M16x2.0x30 DP
140 PCD
OPTIONAL FLANGES REQ.
ANSI OR NPT



2-6" INLET [M150]
6 Holes M16.2x2.0x30 DP
195 PCD
OPTIONAL FLANGES REQ.
ANSI OR NPT

Products described hereon are covered by one or more of the following U.S. patents 3558244, 3652188, 3809508, 3920356, 3930756 and 5035580

May 2001 5124

World Headquarters
CAT PUMPS
 1681 - 94th Lane N.E. Minneapolis, MN 55449-4324
 Phone (763) 780-5440 — FAX (763) 780-2958
 e-mail: sales@catpumps.com
 www.catpumps.com
International Inquiries
 FAX (763) 785-4329
 e-mail: intlsales@catpumps.com



"The World's Most Dependable Pumps"

CAT PUMPS (U.K.) LTD.
 1 Fleet Business Park, Sandy Lane, Church Crookham, Fleet
 Hampshire GU52 8BF, England
 Phone Fleet 44 1252-622031 — Fax 44 1252-626655
 e-mail: sales@catpumps.co.uk
N.V. CAT PUMPS INTERNATIONAL S.A.
 Heiveldekens 6A, 2550 Kontich, Belgium
 Phone 32-3-450.71.50 — Fax 32-3-450.71.51
 e-mail: cpi@catpumps.be www.catpumps.be
CAT PUMPS DEUTSCHLAND GmbH
 Buchwiese 2, D-65510 Idstein, Germany
 Phone 49 6126-9303 0 — Fax 49 6126-9303 33
 e-mail: catpumps@t-online.de www.catpumps.de