

SG35 SPRAY GUN

The SG35 spray gun allows the user to regulate water flow by pulling or releasing the trigger. When the trigger is pulled, a compound lever system moves the stainless steel ball away from the seat and fluid is free to flow out of the gun, When the trigger is released, the water flow is stopped when the stainless steel ball returns and contacts the stainless steel seat. A spring system returns the trigger to the released position.



Technical chart

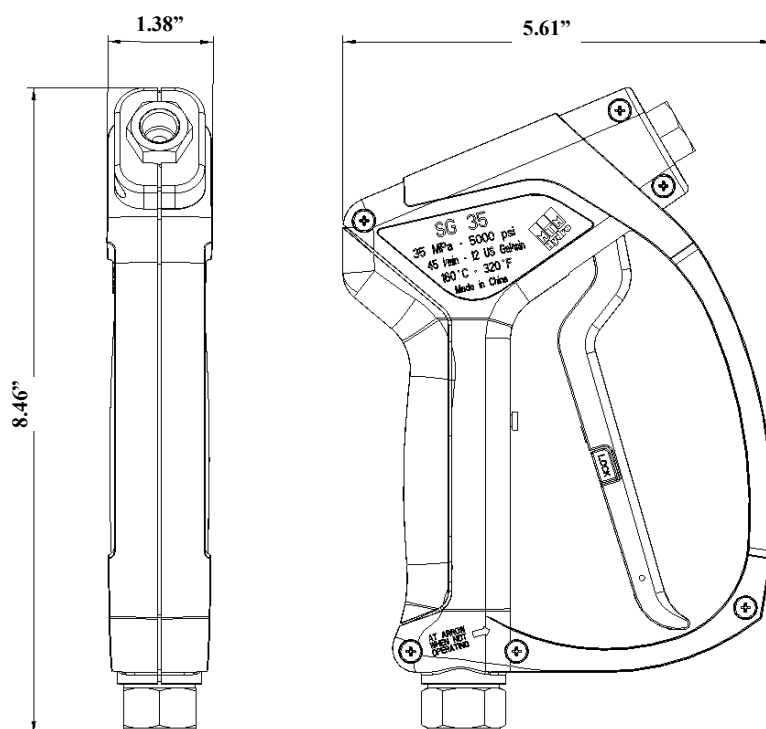
Part #	Max Pressure (psi)	Max Flow (US/gpm)	Max Temperature (°F)*	Inlet	Outlet	Weight (lbs)
1003	5,000	12	320	3/8 NPT F	1/4 NPT F	1.17

The SG35 spray gun, has been designed and tested to work properly with liquids at 190°F, although it can operate for short periods of time at a maximum temperature of 320 °F.

WARNING: when used in a hot water application, pay close attention and ensure that the system does not exceed the maximum pressure and temperature ratings listed in this user's manual.

This is due to the fact that, thermal inertia can cause the trapped pressure and temperature in the system to increase and exceed the maximum pressure and temperature rating of the spray gun. In hot water applications it is always advisable to include a safety valve to protect the unit.

Dimensions



Product's use

Use fresh clear water, with common detergents.

Because of the large number of chemicals that could be used (and their different chemical reactions), the buyer and user of this equipment should determine compatibility of the the materials used and any of the potential hazards involved.

NOTE: Always remember to carefully read the chemical manufacturer's label and follow all directions.

We also recommend that any impure fluid be adequately filtered before it is used.

Use the correct size nozzle for the flow and pressure of the unit spray gun is being installed on and with the trigger pulled carefully adjust the unloader to obtain the correct working pressure. This will avoid dangerous pressure spikes in the system. (the system should be equipped with safety valves to limit both the pressure and temperature).

WARNING: Check to ensure that the SG35 is compatible with the system's operating specifications do not exceed the maximum flow, pressure, and temperature ratings of the SG35 that are listed in this manual (see Technical Chart).

WARNING: If the Gun is used in a hot water application (more than 140 °F), the operator will have to use individual protective measures and devices such as gloves, glasses, etc...

WARNING: Always engage the trigger locking mechanism before putting the gun back, to avoid accidentally opening the valve.

Installation must be done exclusively by skilled workers. **The Manufacturer is not responsible or liable for any loss or damage arising from improper installation or installation done by unskilled workers.**

Service

Service must be done exclusively by skilled workers using only original replacement parts.

To correctly reassemble, follow the drawing listed in the exploded view in this manual.

The regular service is to be done once every 400 working hours (about 10,000 cycles); we recommend inspection of the seals and internal components for wear. If necessary replace worn components with original replacement parts lubricated with a suitable water resistant grease.

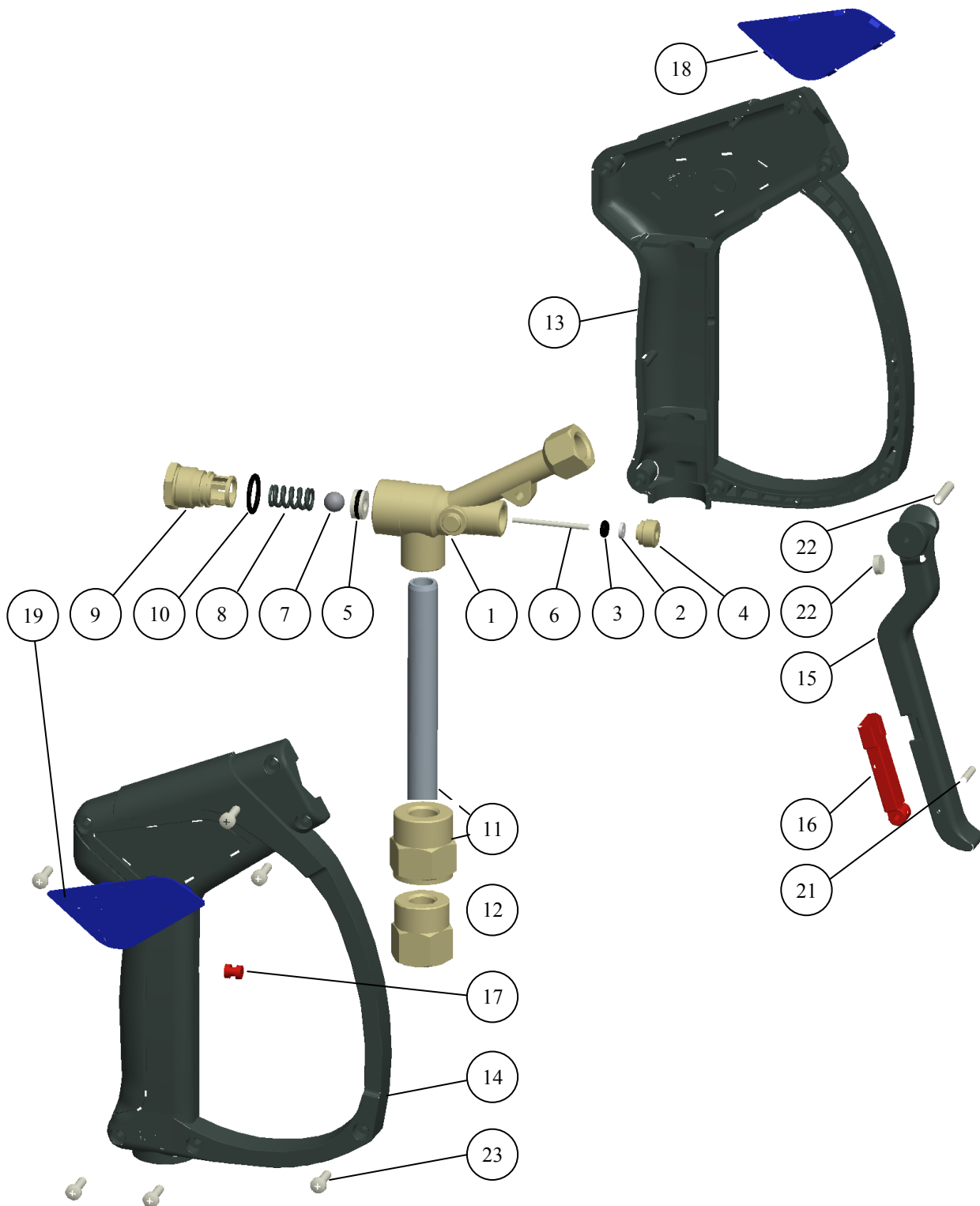
WARNING: Before performing service on the product it is necessary to disconnect the machine from the electric net and to discharge any residual pressure from the hydraulic system.

WARNING: The components need to be properly reassembled to restore the original conditions of the gun. **The Manufacturer is not responsible or liable for any loss or damage arising from improper reassembly or service by unskilled workers.**

Causes and remedies for possible problems

Problem	Possible cause	Solution
Gun' s leakage	Wear of the sealing seats Presence of debris Worn seals	Change the seat Clean Change the seals
Difficulty pulling the trigger	System pressure to high	Calibrate and/or check the unloader

exploded view



Components list

Pos.	Part #	Q.ty	Available in the Repair Kit part # 41.0534	Description
1	35.0371	1		EASY PULL SG GUN BODY 1/4 NPT F
1	39.1028	1	X	EASY PULL SG GUN BACK-UP RING
3	39.1023	1	X	O-RING 2,06x2,62 HNBR 70
4	35.0374	1	X	EASY PULL SG GUN PLUG
5	36.0565	1	X	EASY PULL SG GUN SEAT WITH O'RING
6	36.0569	1	X	EASY PULL SG GUN VALVE STEM
7	36.0567	1	X	11/32" AISI 440 C BALL GRADE 10 ISO 3290
8	36.0562	1	X	SG GUN SPRING
9	35.0377	1	X	SG GUN BACK PLUG
10	39.1026	1	X	O-RING 2050 12,42x1,78 HNBR 90
11	28.0301	1		SG GUN ZINC PLATED PIPE 1/4 BSP M-M L=137
12	35.0375	1		SG GUN INLET FITTING 3/8 NPT F
13	37.0461	1		LEFT SHELL FOR SG GUN
14	37.0462	1		RIGHT SHELL FOR SG GUN
15	37.0463	1		SG GUN TRIGGER
16	37.0464	1		SG GUN SAFELOCK
17	37.0465	1		RUBBER TRIGGER STOP
18	37.0466	1		LEFT TECHNICAL DATA PLUG
19	37.0468	1		RIGHT TECHNICAL DATA PLUG
20	36.0638	1		AISI 304 S.STEEL PIN Ø4x20
21	36.0639	1		AISI 304 S.STEEL PIN Ø3x14
22	36.0082	1	X	SG GUN AISI 304 TRIGGER PAWL
23	36.0640	6		BLACK SCREW 3,5x15, ROUNDER CYLINDRICAL HEAD, CUTTER DRILL, TORQUE SEAT

Additional Instructions

To correctly install, use, and service this product, carefully read and follow the instructions and warnings contained in this manual. Ensure these instructions are included in the final user's manual of any machine in which the product is assembled.

Any improper use of or alteration of this product may cause loss or injury. **The Manufacturer is not responsible or liable for any loss, damage, or injury arising from improper use or alteration and declines all liability for its functioning and safety.**