



A P A C H E

DUAL PUMPER



There is **'RED HOT'** and then
there is a **'hotter hot...'**

WHITE HOT

Gas System Features:

- Two Allison Pumps with 5 year head warranty
- Std. 40 HP Kohler Engine with auto spark advance
- High Efficiency Donaldson Air Filter
- High volume Allison downstream Chemical Injection
- The largest charging system in the industry with a 125 amp alternator on hot water units
- The industry's largest and most efficient heating system
- Our special spec SDC 12 Volt Burners will heat water hotter and more efficiently
- Allison Relays for trouble free 12 Volt Burner life
- Poly Chain 'never tighten' belts
- 24 Gal Gas Tank for long, uninterrupted run times.
- Quick Drain Oil System for Engine & Pumps
- Tachometer/Hour Meter
- No-mess Oil Filter change system
- 5000 PSI Safety Burst Disc
- 7500 PSI On/Off Valves
- Lifetime Frame Warranty
- Lifetime Belt Warranty

**ENGINES UP TO
65 HP DIESEL
KUBOTA**



While other companies are content with producing 'flashy' disposable systems which are little more than attention-grabbing styling fantasies, Allison Iron Horse has always been developing to a far higher and more complete level of engineering than what our industry has grown to know as 'the typical'.

Distributor Inquiries Welcome

No Further Discounts Apply - Prices Subject to Change without Notice.

DATED MATERIAL SERIES 201003. Please check with your customer service rep to insure that the prices contained herein are accurate.

○ <http://www.pwparts4less.com> ○



ADVANTAGE  **COST PLUS 10%** **1-866-487-1778**

GENERAL PUMP
4.0 @ 4000
EZ4040G
\$257.04

ALLISON SOFT TOUCH
Better than K7
to 8 GPM/3700 PSI
#7637 **\$55.56**

PREMIUM HIGH VOLUME FILTER
1" In/Out
#1015 **\$28.88**

11,000 PSI 'QC' O'RINGS
20 EA - 3/8"
#QOR8X **\$9.17**



11,000 PSI 'QC' O'RINGS
20 EA - 1/4"
#QOR4X **\$8.33**



Garden Hose Quick Connects
Solid Brass
#1018 **\$2.80**



COMPACT FILTER
1/2" w/Connector
#1009 **\$9.44**



PREMIUM CHEM FILTER
Brass & S.S.
#1153 **\$1.95**



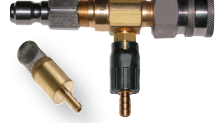
20% Dual Port Chem Injector
5-8 GPM
#1738 **\$19.03**



20% Stainless Chem Injector
5-8 GPM
#1141 **\$41.04**



20% Chem Injector
Inc. Filter & Line Coupler/Plug
5-8 GPM
#1449 **\$19.06**



Call and get your PASSWORD...

PREMIUM DRUM PUMP
Fits 55 Gallon Drum
#1650 **\$8.77**



LID REMOVER
For 5 Gallon Pails
#1652 **\$1.55**



UNLOADER MOUNTING BLOCK
1/2 x 1/2 FPT
#1083 **\$5.21**



6,000 PSI Ball Valve
3/8" - 316 Stainless
#1667 **\$37.61**



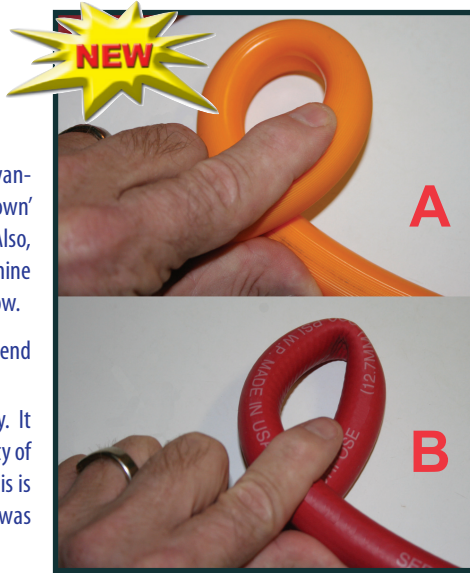
...and start to SAVE IMMEDIATELY!

Premium Hose Reel Hose & Tank to Equipment Hose

FIGURE 'A' is what a healthy, non-collapsing hose looks like. The advantages are: When on a hose reel the first few layers will not 'mash down' and restrict the flow of water from the source to your supply tank. Also, when you use this hose to feed water from the supply tank to the machine the heat will not make this hose become 'spongy' and restrict water flow.

Comes with 'crimped on' faucet connector with 'strain relief.' The other end is open so it will attach to a barb on the reel.

FIGURE 'B' is what is found on 95% of all the hose reels in the country. It too is a premium grade industrial water hose that is 50 times the quality of the typical water hose you will find in a 'high end' hardware store. This is the same hose I had to live with for 15 years as a Mobile Washer and it was not fun. It took forever to fill my supply tank for obvious reasons.



3-WAY BALL VALVE
For Dual Chem Set-ups - 1/4"
#1308 **\$21.68**



Save Big Time!

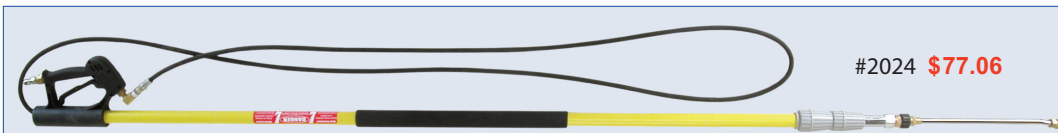
3,000 PSI BALL VALVE
3/8" - #1669 **\$26.19**
1/2" - #1670 **\$36.13**



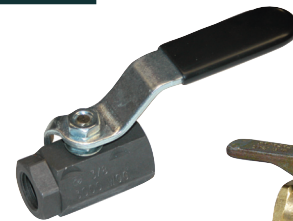
1-866-487-1778

PART #	DESCRIPTION	PRICE
3401	3/4" - Price per foot to connect Water Tank to Machine. No Ends.	\$ 2.11
3415	3/4" x 150' with Crimped GH Connector & Strain Relief. Other end open.	\$284.20
3430	3/4" x 300' with Crimped GH Connector & Strain Relief. Other end open.	\$522.50

3-Section Telescoping 'Long Wands'
RATED TO 4,000 PSI



#2024 **\$77.06**



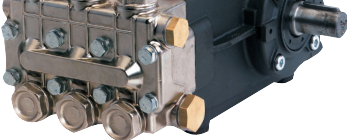
3,000 PSI BALL VALVE
Carbon Steel
3/8"
#1303 **\$16.86**

BALL VALVE for Chem Metering
1/4 FPT x 1/4 Barb
#1307 **\$6.93**



ADVANTAGE  **COST PLUS 10%** **1-866-487-1778**

GENERAL PUMP
5.6 @ 3500
TS2021



NOZZLE KEEPER
Holds 3 Nozzles
#1827 **\$2.95**



SHOWER STYLE
Nozzle Holder
#1274 **\$7.92**



5,000 PSI STILETTO TURBO
4.5 Nozzle Size
#1971 **\$34.31**



Hi-Pressure FILTER
for Turbos
#1510 **\$5.16**



BELT CLIP
Nozzle Holder
Holds 4 Nozzles
#7780 **\$4.88**



TWIST TYPE
Nozzle Holder
#1275 **\$15.61**



5,000 PSI STILETTO TURBO
5.5 Nozzle Size
#1975 **\$34.31**



ROTOMAX NOZZLE
4.2 to 6.0 GPM
#1500 **\$38.58**



BALL TYPE
Nozzle Holder
Ceramic Ball
#1269 **\$14.06**



BALL TYPE
Nozzle Holder
Stainless Ball
#1267 **\$13.02**



Want to buy something in BULK? We have a price for YOU!

RL51 4100 Gun
GPM: 13.2
PSI: 4100 PSI
#1204 **\$38.00**



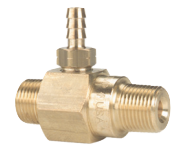
MTM 501 Gun
GPM: 8
PSI: 4000 PSI
#1209 **\$9.95**



25+% Super Suds Sucker
Draws lots of Chem w/300' of HP hose
#1964 **\$31.16**



ALLISON 23% Injector
Non-Adjustable
5-8 GPM
#1443 **\$9.51**



We Manufacture the Industry's Best Cleaning Chemicals...



GIANT 21290C
GPM: 12
PSI: 5000 PSI
#2129 **\$18.40**



GENERAL/PA YG5000C
GPM: 11
PSI: 5000 PSI
#1221 **\$24.31**



GENERAL/PA YG5000
GPM: 11
PSI: 5000 PSI
#1220 **\$23.05**



HI-TECH HD1000C
GPM: 12
PSI: 4500 PSI
#1227 **\$20.40**

...and we can PRIVATE LABEL them with YOUR COMPANY INFO!

CLEAR BOWL FILTER
50 MESH
1/2"x1/2" FPT
#1012 **\$9.95**



AL-607 UNLOADER
GPM: 8
PSI: 4500
#1114 **\$37.46**



18 HP KOHLER 20 AMP
Inc's Muffler
\$859.85
#1829



18 HP VANGUARD 20 AMP
Inc's Muffler
\$815.00
#1732

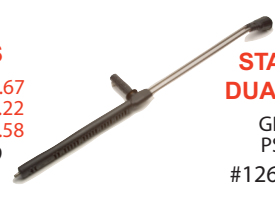


Up to 30% UPS SHIPPING DISCOUNTS!

TROMBONE Nozzle Holder
Push for 1 Nozzle
Pull for 2
#7775 **\$9.36**



PREMIUM BRUSHES
10" #1451 \$ 6.67
18" #1452 \$12.22
24" #1453 \$14.58
Gutter #1459 \$14.24



42" STAINLESS DUAL LANCE
GPM: 10.5
PSI: 4,100
#1262 **\$25.90**



PRESSURE SWITCH
Rated up to 15 AMPS
3,600 PSI x 3/8"
#1371 \$13.81
6,500 PSI x 1/4"
#1372 \$46.44

Up to 82% TRUCK LINE DISCOUNTS!

7,500 PSI BALL VALVE
3/8" FPT
PLATED
#1305 **\$11.86**



PACKING Extraction Kit
For All Pumps
Incl's Slide Hammer
#1007 **\$44.33**



TINY TACH HOUR METER
No More Guessing
Easy Install
#1429 **\$29.95**



SUNTEC FUEL PUMP
A2VA7116
Industry Standard
#1399 **\$34.88**



MASTER CARD • VISA • AMEX • DISCOVER

ADVANTAGE  **COST PLUS 10% 1-866-487-1778**

GENERAL PUMP TSF2421
12.0 @ 2,500
\$629.92

TURBO SHIELD
No more splashing!
#1497 **\$34.97**

SOAP NOZZLE
65 Degree
40 Hole Size
#NOQB-6540
\$.54

ROTOJET TRUBO NOZZLE
5800 PSI
4.5 Noz. #1555
5.0 Noz. #1556
5.5 Noz. #1557
6.0 Noz. #1558
7.0 Noz. #1559
8.0 Noz. #1560
12.0 Noz. #1561
\$64.83

DIRT KILLER
4,700 PSI
4.5 Noz. #1483
5.5 Noz. #1484
6.0 Noz. #1485
7.0 Noz. #1486
8.0 Noz. #1487
10.0 Noz. #1488
\$83.95

TRUBO-TECH
5,100 PSI
4.5 Noz. #2008
5.0 Noz. #2010
5.5 Noz. #2012
6.0 Noz. #2014
6.5 Noz. #2016
7.0 Noz. #2018
8.0 Noz. #2020
\$34.31

SOAP NOZZLE
65 Degree
40 Hole Size
#NOB-6540
\$.76

LASERJET NOZZLES
LM-_____
(insert size)
\$1.86

Shown with Optional Filter

A 1505.5 would be 'LM-1505.5'

COST PLUS 10% - finally - a fresh look - a huge savings!

THUMB SPRAYER
1.5 Quarts
#1822 **\$3.34**

Industrial PUMP-UP SPRAYER
2 Gallons
#1883 **\$9.71**

BACK-PACK SPRAYER
4 Gallons/90 PSI
#1844 **\$29.94**

GENERAL NOZZLES
NOS-_____
(insert size)
\$2.43

A 2506 would be 'NOS-2506'

Order On-Line at <http://www.pwparts4less.com>

CHECKMATE IGNITION TESTER
#1947
\$41.22

SUNTEC Fuel Solenoid
12 Volt
#1417
\$19.87

BECKETT FUEL PUMP
w/built-in 12Volt Solenoid
#1398
\$42.96

SPRAYING SYSTEMS
SSN-_____
(insert size)
\$2.79

A 0004.5 would be 'SSN-0004.5'

CALL, E-MAIL OR FAX YOUR ORDER!

WINCO GENERATOR
2,000 WATTS
#1434
\$433.80

WINCO GENERATOR
8,000 WATTS
#7105
\$973.33

VOLTMASER GENERATOR
3,000 WATTS
#1438
\$371.22

LASERJET NOZZLES
LQ-_____
(insert size)
\$1.88

A 1505.5 would be 'LQ-1505.5'

Tired of looking at the 'same ole 'stuff?' If you are...

30 HP KOHLER
25 AMP Recharge
#1834
\$1,616.00

28 HP KOHLER
Water Cooled
#2888
\$1,801.17

13 HONDA
#2068
\$492.00

GENERAL NOZZLES
NOQS-_____
(insert size)
\$2.43

A 2508 would be 'NOQS-2508'

...you are in for a treat at <http://www.pwparts4less.com>

40 HP GAS KOHLER
Awesome Power!
#1836
\$2,281.69

65 HP KUBOTA
with Shaft/Controls & Radiator
#KUB65
\$6,200.00

"QUICK" OIL DRAIN PLUG
Fits Kohler/Briggs Pumps/Gears
#1428 **\$7.88**

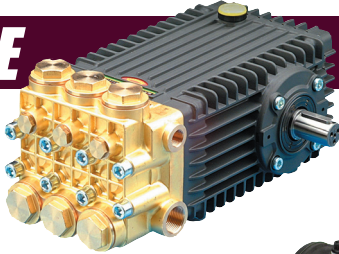
SPRAYING SYSTEMS
SSNQ-_____
(insert size)
\$2.79

A 4006.5 would be 'SSNQ-4006.5'

<http://www.pwparts4less.com>

ADVANTAGE  **COST PLUS 10%** 1-866-487-1778

GENERAL PUMP TSF2021
8.5 @ 3,600
\$512.00



Twist & Lock THROTTLE
36" Cable
#1991 **\$38.38**



KOHLER MAINT. KIT
Filters, Plugs & Oil
Fits 22-30 HP
#6441 **\$35.43**



GENERAL PUMP Rebuilding DVD
#GPV-101
\$4.95



Dual Bearing 1" GEAR BOX TO 30 HP
#1028
\$179.93



13 HP CART
Fits Honda
#2049
\$74.95



Engine/Pump Base Plate
13 thru 30 HP
#1899
\$29.95



GP PACKING INSERTION KIT
#1063
\$15.45



GP SEWER Jetter Valve
Fits T & TS Pumps
#1006 **\$37.87**



ALLISON PUMP RAILS
Heavy Duty
#1653 **\$16.67**



PUMP PRESSURE TESTER
#1229
\$49.83



You don't have your password yet?

10,000 PSI GAUGE
To be used on 3500-4500 PSI Pumps
#1133
\$5.95



PUMP PRESSURE TEST TOOL
Quick Connect
#1233
\$10.72



TEFLON TAPE
520 X 1/2
#1651 **\$.24**



THREAD LOCKER
Medium
#1057
\$38.79



Call Pete or simply FAX over a copy of...

DIP STICK FOR GENERAL
#1882
\$5.94



GAUGE PORT Valve Cap
Fits GP TS Series
#1061
\$11.44



GENERAL PUMP OIL
6 Pak of 16 oz. btls.
#1064
\$16.88

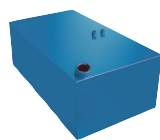


ELECTRICAL TAPE
UL LISTED
60 X 3/4
#1601 **\$.69**

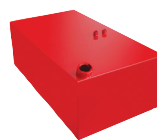


your re-sale certificate & a copy of a yellow page ad

24 GALLON FUEL TANK
With mounting hardware
#9401
\$129.25



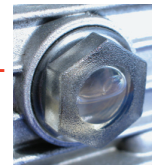
24 GALLON GAS TANK
With mounting hardware
#9400
\$129.25



CAT PUMP OIL
21 oz. bottle
#4788
\$7.00

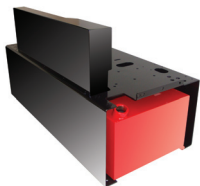


SIGHT GLASS FOR GENERAL
Fits T & TS Series
#1689
\$6.65



and we will FAX BACK to you a PASSWORD

DUAL PUMPER FRAME
Original Allison
#9997
\$875.00



9-GALLON FUEL TANK
Set up for Pressure Washers
#4121
\$37.80



MARINE BATTERY BOX
Lg #1690 **\$6.21**
Sm #4690 **\$6.88**



UNIVERSAL STARTER SOLENOID
For Gas Engines
Used on Vanguards
#1427 **\$7.47**



Trust me! You will have FUN in our On-Line CATALOG!

ALLISON ENGINE TERMINATOR
#1990 **\$15.67**



UNIVERSAL KEY SWITCH
Fits All Engines
#1430 **\$13.95**



HONDA GAS CAP
#1129 **\$2.47**



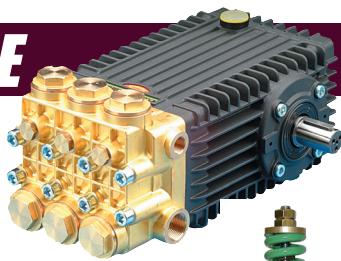
DUAL BATTERY SELECTOR
For 12V Burner Set-ups
#1168 **\$23.90**



MASTER CARD • VISA • AMEX • DISCOVER

ADVANTAGE COST PLUS 10% 1-866-487-1778

GENERAL PUMP **\$571.00**
 TSF2221 10.2 @ 3,000



SOOT REMOVER
 1 Quart
 #6999 **\$12.60**



FUEL/WATER SEPARATOR
 Better than Racor
 #1794 **\$18.75**



K-7 UNLOADER
 #1089 2.1-2.9 GPM
 #1090 2.9-4.2 GPM w/7.0 by-pass
 #1091 4.2-6.6 GPM w/7.1 by-pass
 #1092 6.6-11 GPM w/7.2 by-pass
\$69.03



YU-2140
 21 GPM / 4500 PSI
 #1101
\$69.50



ZK-1 General Soft-Touch
 11 GPM / 3600 PSI
 #1096
\$59.67



YU-831 GENERAL
 TO 8 GPM
 4,000 PSI
 #1104
\$34.97



MOSMATIC SWIVEL
 1/4F x 1/4M
 #1144
\$23.85



SUPER SWIVEL
 For Hose Reels
 1/2" x 3/8"
 #1463
\$23.39



HUDSON Float Valve
 The Industry's Best!
 #1343
\$23.82



The best prices & the best selection in the industry!

VB-10 UNLOADER
 Soft-Touch
 #1108
\$72.22



1-866-487-1778

MV-550 UNLOADER
 8 GPM / 3600 PSI
 #1120
\$33.33



PREMIUM CHEMICAL APPLICATION HOSE



800 PSI

- Will not collapse on reels
- Incredible bend radius without 'kinking'
- Safety Orange

PART #	DESCRIPTION	PRICE
3399	3/8" ID, 800 PSI, Price Per Foot	\$.74
3400	1/2" ID, 800 PSI, Price Per Foot	\$.84
3401	3/4" ID, 800 PSI, Price Per Foot	\$2.11

Take a look - You'll see 'stuff' you have never seen before!

O'RING PICK
 For Quick Connects
 #1600 **\$1.93**



ADJUSTABLE THERMOSTAT
 Burner Control
 #1349
\$14.85



FOAM CANNON
 Throws Thick Foam
 Rated to 3000 PSI
 #1273
\$35.55

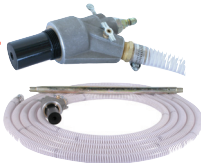


EXHAUST HOOD SWIVEL
 6" / 3 Nozzle
 Fixed
 #1532
\$233.34



Become an ALLISON IRON HORSE DISTRIBUTOR

INDUSTRIAL SAND BLAST KIT
 Up to 5,500 PSI
 Up to 10 GPM
 #1288 **\$54.29**



CHEMICAL METERING VALVE
 Stainless & Brass
 Rated to 4000 PSI
 #2447 **\$7.85**



SPRAY-FLEX LANCE
 5,000 PSI
 #1692
\$41.77



GUTTER SWEEP
 Connects to Lance
 #1814
\$4.44



Ask Pete for Details

INDUSTRIAL HOSE REEL
 Holds 200' of 3/8"
 #1316
\$54.64



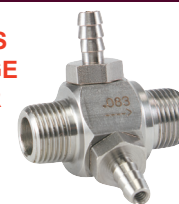
DIRT KILLER PREMIUM HI-LO's
 4.0 #1686
 4.5 #1687
 5.5 #1688
\$31.92



MUD-CAT Under Carriage Turbo Cleaner
 #1869
\$435.00



STAINLESS DUAL STAGE INJECTOR
 5-8 GPM
 #1139
\$71.92



MASTER CARD • VISA • AMEX • DISCOVER

12 VOLT BURNER DIAGNOSTIC CENTER

It will tell you in 2 seconds what it would normally take 2 hours to figure out on your own. A very simple wiring job using the enclosed instructions will have you up and running with a complete 12 volt burner diagnostic center on your machine in 'no time flat.'



**It takes them
2 HOURS
to figure out why their
burner is not working.**

**It will take you
2 SECONDS!**

COMPLETE SYSTEM

Ready to install with easy to understand instructions. You will not believe how much down-time you will save with this system.

4001 \$120.21

'Power in the hands of a few'



SUPER SKID 8.5 GPM @ 3600 PSI

*There is 'red hot'
and then
there is a 'hotter hot...'*

WHITE HOT

UP TO 880,000 BTU OUTPUT

THE MOST ADVANCED COIL DESIGN IN THE PRESSURE WASHER INDUSTRY

20" DUAL PASS COIL DESIGN LARGE FRAME SDC BECKETT BURNER

System Features:

- o TSF GENERAL PUMP
- o 30 HORSEPOWER KOHLER ENGINE
- o The largest recharging systems in the industry
- o The industry's largest and most efficient heating system
- o Our Special Spec SDC 12 Volt Burners
- o Allison Burner Diagnostic Center
- o High Volume Fuel Tanks for long, uninterrupted runs.
- o Hour Meter
- o 5000 PSI Safety Burst Disc
- o Hose, Gun, Lance & Nozzles included.

List Price \$10,975.00

You Pay \$5,475.00

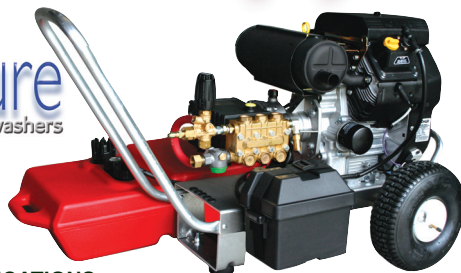
30K-SDC-H8536

Shown with Honda Engine which is not available on a machine this large.

'Power in the hands of a few'

Signature
pressure washers

List Price \$6,590.00
\$3,295.00



SYSTEM SPECIFICATIONS

- o ALLISON Severe Duty Pump with Quick Drain Oil Plug
- o Auto Shut-down if pump overheats
- o Tachometer & Hour Meter
- o 30 HP Kohler Engine, 25 AMP with Quick Drain Oil Plug
- o 9 Gallon Fuel Tank
- o Marine Grade Battery Box
- o ALLISON Gear Drive with Quick Drain Oil Plug
- o ALLISON 'Soft-Touch' Unloader
- o Safety Pressure Relief Valve
- o Oversize Aircraft Aluminum Cart
- o Super Suds Sucker Injector
- o 100', 4,000 PSI Hose
- o HT-4100 Hi-Flow Gun
- o Hose Whip installed on Gun
- o 48" Stainless Steel Lance
- o Trombone Dual Nozzle Holder

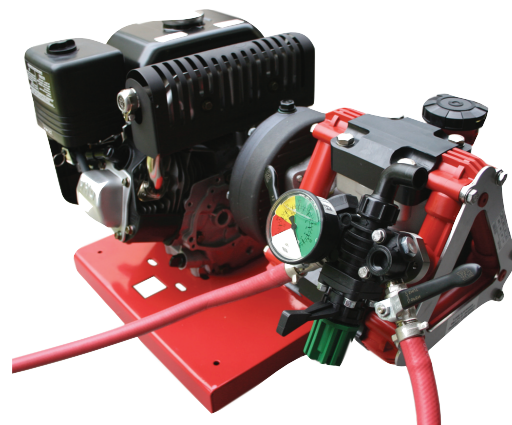
**SAVE UP TO
\$2,500.00 PER YEAR
IN FUEL! HOW?**

Simple! **The Engine
returns to IDLE when
trigger is released!**

**Systems Available
From 5.6 GPM
To 12.5 GPM**

When you release the trigger on the Gear Drive the Engine returns to Idle. On the Belt Drive when you release the trigger the Pump stops turning and the Engine returns to Idle. *Imagine how long the pump will last now!*

CYCLONE BY: ALLISON



**PUMPS CHLORINE
Up to 10 GPM & Up to 300 PSI**

Regular Price \$2,695.00

Best Buy in the Industry!

9878 \$1,695.00

o <http://www.pwparts4less.com> o



Cost Plus^{10%}
P.O. Box 6, N. Monmouth, ME 04265

1-866-487-1778

FAX 1-800-947-7573

PRSR STD
U S POSTAGE
PAID
THOMASVILLE, GA
PERMIT NO. 92

WHO QUALIFIES FOR DISTRIBUTOR PRICING?

- DO YOU SELL CHEMICAL?
- DO YOU SELL EQUIPMENT?
- DO YOU RENT EQUIPMENT?
- DO YOU SERVICE EQUIPMENT?

IF SO CALL US & GET YOUR

PASSWORD

THEN LOG IN & START SAVING MONEY!

MINIMUM ORDER \$100.00

Cost Plus^{10%} Distributor Program



Who's Watching YOUR WALLET?

Up to 30% UPS Discounts & 82% Truck Line Discounts.

Tired of looking at the same 'ole stuff?'
If so, you will find our On-Line Catalog quite refreshing and the nice thing is...

...no huge orders to RECEIVE HUGE DISCOUNTS!

sales@pwparts4less.com

CALL PETE CASE
TODAY
and start saving
TOMORROW!

1 to 3-Day Shipping
to most points in
the lower 48 States

1.866.487.1778

SERPENTINE PRESSURE WASH HOSE

4,000 PSI 50' BLACK \$30.50 #1708	4,000 PSI 100' BLACK \$61.00 #1709	4,000 PSI 50' GREY \$36.80 #1804	4,000 PSI 100' GREY \$69.51 #1805
---	--	--	---



6,000 PSI 50' BLACK \$40.90 #6001	6,000 PSI 100' BLACK \$78.73 #6002
---	--

6,000 PSI 50' GREY \$46.62 #6101	6,000 PSI 100' GREY \$89.95 #6102
--	---

You really don't have to buy a Truck Load to get the best price in the industry!

The best pressure washer hose in the industry!

○ <http://www.pwparts4less.com> ○

